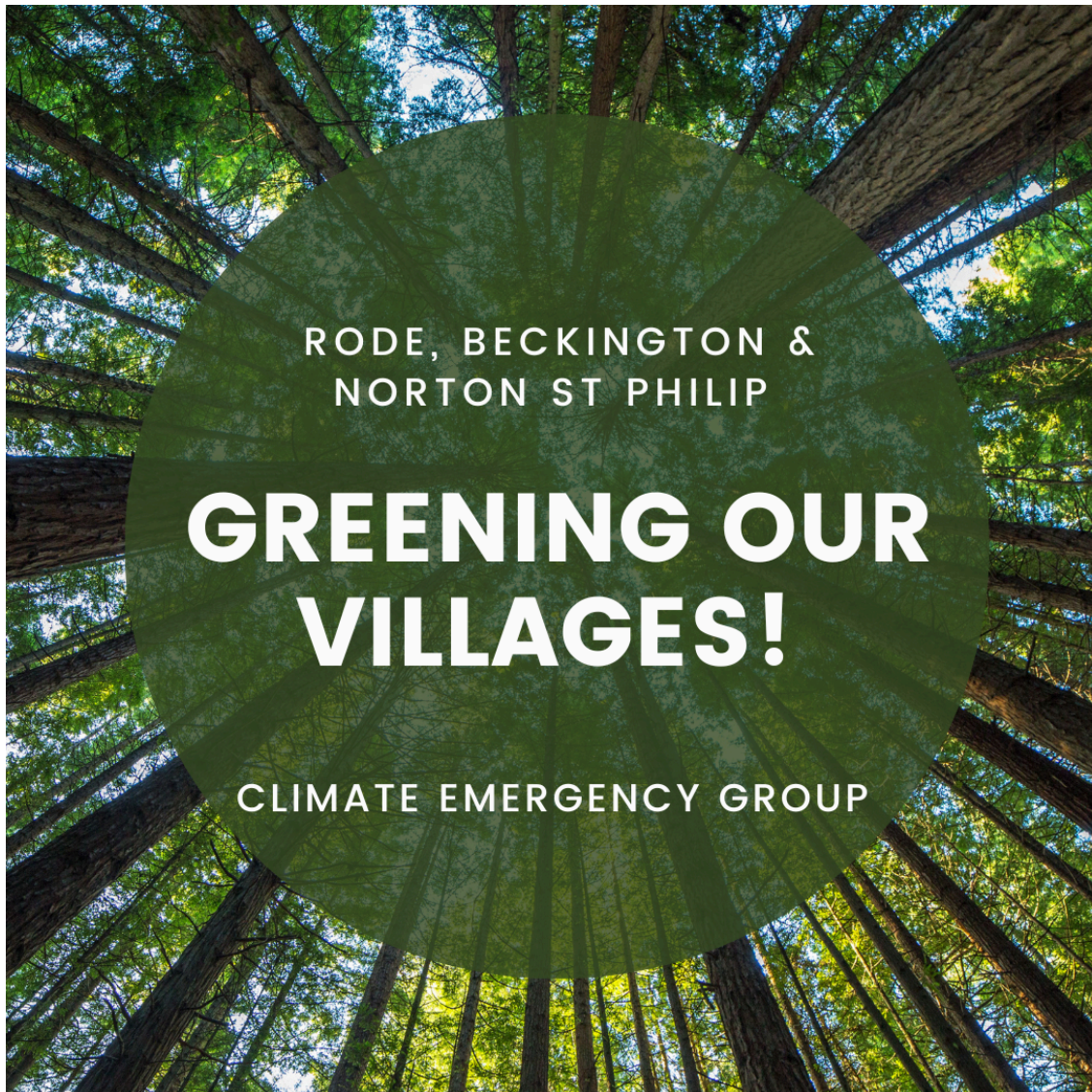


[View this email in your browser](#)



Welcome to the September Climate Emergency Group Newsletter

As the rain falls and autumn beckons, can I welcome you to the latest edition of the Climate Emergency Newsletter :-). Suddenly there seems to be a lot going on, including the screening of two fascinating climate-related films, "Catch the Bus" month, Sustainable Fashion Week, and much more. Full details in the body of the newsletter, below.

And as always - if you know someone who might be interested in receiving this newsletter, feel free to forward this issue. New subscribers can sign-up by following the link below:

[https://mailchi.mp/4b503e0ba20c/initial-sign-up?](https://mailchi.mp/4b503e0ba20c/initial-sign-up?fbclid=IwAR2N42N4AEBZCnvzdJNHpu1na0KPFv4s0PZdYK7hJiwwKLM45ojMwGruF20)

[fbclid=IwAR2N42N4AEBZCnvzdJNHpu1na0KPFv4s0PZdYK7hJiwwKLM45ojMwGruF20](https://mailchi.mp/4b503e0ba20c/initial-sign-up?fbclid=IwAR2N42N4AEBZCnvzdJNHpu1na0KPFv4s0PZdYK7hJiwwKLM45ojMwGruF20)

information, are available on the Rode Village Website:

<https://www.rodevillage.com/climate-emergency/>

jim.mcauliffe@btinternet.com



Movie Time!

With summer nearly over, you may be thinking of getting back into the cinema-going habit. If so, you could do worse than checking out a couple of interesting environmental films showing locally in September.

This **Sunday 8th September (16.00)**, The Little Theatre Cinema in Bath is hosting a showing of *Power to the People*, the latest film by award-winning charity Cornwall Climate Care. The film is presented by surfer and geologist Lucy Cotton and explores the exciting opportunities, huge challenges and frustrating problems facing us all in our efforts to wean ourselves off fossil fuels. There is a post-film panel discussion, chaired by Transition Bath, including the film's producer, plus local energy experts. Tickets from www.picturehouses.com

On **Friday 27th September (19.00)**, the Merlin Theatre Frome is hosting a showing of *Wilding*. Based on Isabella Tree's best-selling book by the same title, the film tells the story of a young couple who bet on nature for the future of their failing, four-hundred-year-old estate. The reviews were exceptional! ("Wonderful... An inspiring true story that shows how we can revive nature and restore hope", The Guardian; "Nature is healing in this soul-enhancing, hopeful ode to the British countryside", Time Out). Tickets from www.merlintheatre.co.uk

[Subscribe](#)[Past Issues](#)[Translate](#) ▼

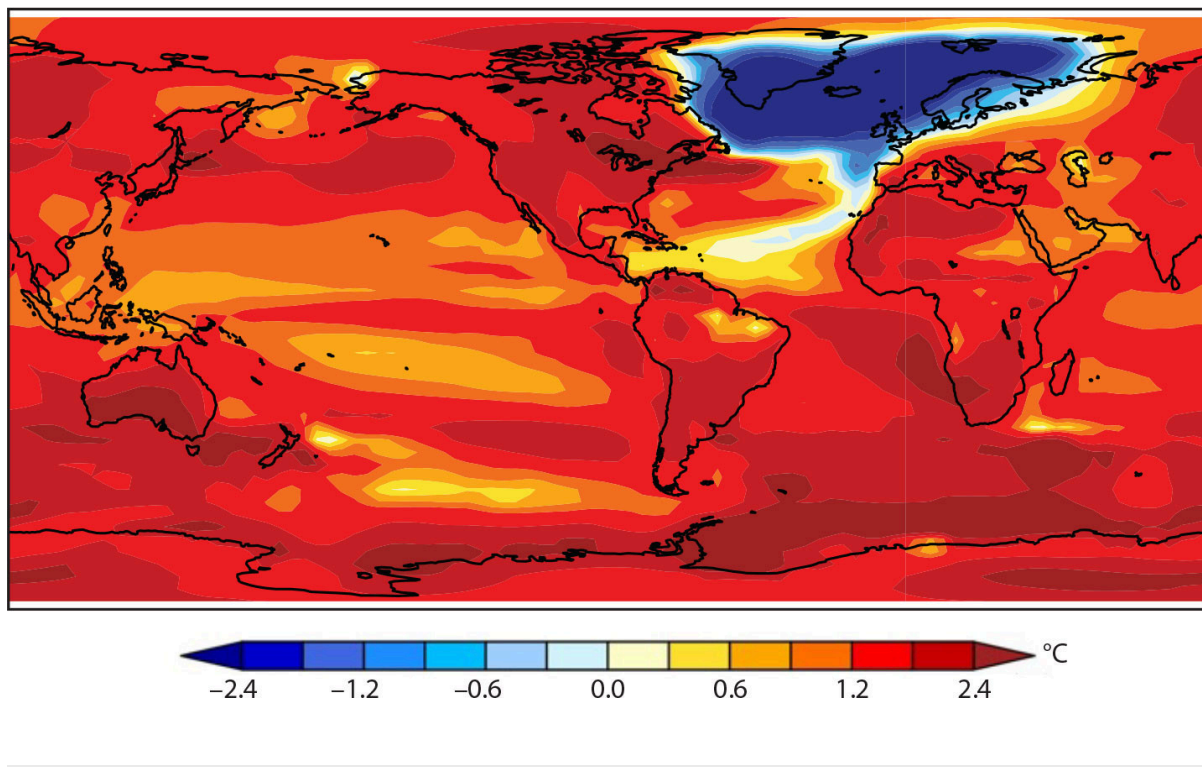
an addition to the above, from the comfort of your own home (no water sailing) than an hour to watch a fascinating (but rather terrifying) talk by Professor Rahmstorf of the Potsdam Institute. Entitled **"Tipping Risk of the Atlantic Ocean's overturning circulation"** it describes the ever-increasing impact on the climate of the melting of the polar ice, in particular the Greenland ice-sheet:

https://www.youtube.com/watch?v=ZHNNW8c_FaA

If you prefer to read about this, rather than watch the talk, there's a very accessible article in the magazine "Oceanography" by Professor Rahmstorf (basically a transcript of the talk), which can be read here:

<https://tos.org/oceanography/article/is-the-atlantic-overturning-circulation-approaching-a-tipping-point>

In essence, a major conclusion is: "A full shutdown of the AMOC (Atlantic Meridional Overturning Circulation) would have truly devastating consequences for humanity and many marine and land ecosystems. Figure 15 (below) shows the model after a doubling of CO₂, with an AMOC collapse caused by this CO₂ increase. The cold air temperatures then expand to cover Iceland, Britain, and Scandinavia. The temperature contrast between northern and southern Europe increases by a massive 4°C, likely with major impact on weather, such as unprecedented storms."





Solar Farm in Rode - small update

As reported last month, the application to build a large-scale Solar Farm in Rode was approved by Somerset Council in July. Rode Parish Council has been in contact with the developer, Low Carbon, in order to better understand the proposed timescales of the development. The PC expects to meet with Low Carbon in November, and obviously this newsletter will provide appropriate updates.

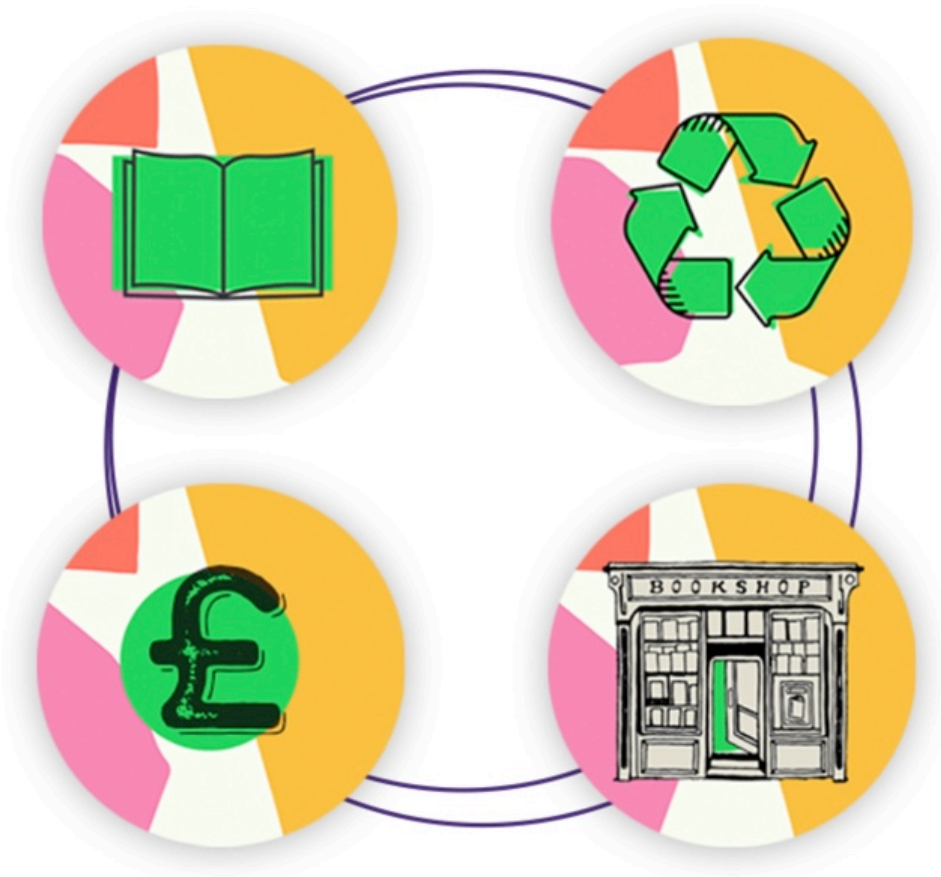
Due to the requirement for the applicant to provide additional information, Low Carbon missed the deadline to apply for a government price guarantee contract ("Contract for Difference", or CfD) this year. Contracts for Difference are long-term contracts that compel a generator to provide a certain amount of low-carbon electricity in exchange for a flat rate that's tied to inflation. From the government's perspective, this guarantees a consistent supply of low-carbon energy – usually for 15 years – while the generator can safely invest in renewable technology in return for a steady, inflation-resistant source of income.

Rode PC understands that Low Carbon will make a CfD bid next year, in order to secure certainty around the price it will receive for the power generated from the development in Rode. Until it secures the CfD any investment will obviously, to a degree, be at risk.

BOOKLOOP

BY  Bookshop.org

READ > RECYCLE > REDEEM



Sustainable reading!

E-books and audible books obviously score highly in terms of sustainability, but I'm afraid personally I love to get my hands on a physical book. As a result, we have far too many books at home, and I feel rather guilty every time I add to the stock. Fortunately, Bookshop.org (the online retailer launched in 2020) has just launched a buy-back scheme for used books - Bookloop.

The scheme allows you to trade books you own for credit to use on the Bookshop.org website. You can register books through the online valuation system and then either leave them at a DPD drop-off point or have them picked up from home. The used books are then traded on other online marketplaces by Zeercle, a company that also operates the WH Smith buy-back scheme launched late last year.

However, unlike the WH Smith service, books traded via Bookshop.org will not be sold on Amazon-owned websites, and accumulated royalties will be distributed to

You need to sell at least £5 worth of books to participate in the scheme.....and it's worth mentioning that not every book will be accepted. Some titles are either too common, or have a value that's simply too low to justify being returned. I've tried it out myself, and have had a few "rejections", but have also been surprised by the value of some items (eg: a map of Northern Norway was valued at £6, despite it costing me only £6.50 when I bought it new!).

To try it out, go to <https://bookshop.zeercle.com/>

PS: Another way of recycling your old books is, of course, the former telephone box in Rode which has an ever-changing stock of "cast-offs"....

<p>Low impact</p> <p>A sustainable fashion industry is one that is significantly low impact. It doesn't exploit workers, it doesn't damage biodiversity, habitats and the land, it doesn't adversely affect human health or abuse animals and it doesn't fuel climate change.</p> <p>Our activity in creating and utilising clothing must be regenerative - giving more to nature and communities than it takes as resources - and it must protect ecosystems and communities across the globe.</p>	<p>A Culture of Exchange</p> <p>A sustainable fashion industry is one that moves away from a culture extraction and exploitation and transitions to a culture of exchange.</p> <p>We'd love to see a healthy exchange with nature, where clothing is produced with a 'soil to soil', circular mentality. We want new channels of exchange between individuals and communities. Swapping, sharing, collaborating. And exchange between stakeholders in the industry - sharing data and best practice to help speed progress up.</p>	<p>Collective Action</p> <p>A sustainable fashion industry is one where we join together as communities and consumers to take a stand against the fast fashion machine, rejecting that idea that cheap, poor quality clothing is being made in our best interests.</p> <p>We're keen to explore how we can shift power from big brands back into the hands of the individual. Where we are empowered, sharing skills and knowledge to enable us to step away from fast fashion.</p>
--	---	--

Sustainable Fashion!

We're all becoming more and more aware of the impact of "fast fashion" (fashion brands' ever-changing ranges, enticing us to renew our clothing wardrobe on an increasingly frequent basis). Sustainable fashion is the opposite - encouraging low impact manufacture, and exchange (rather than buy new).

Sustainable Fashion Week celebrates and encourages these concepts, and runs from **20th - 29th September**. There are a whole host of events in Frome and at the National Centre for Fashion & Sustainability at Bath Spa University - workshops, talks, sales, exchanges, etc, etc. Full details here:

Frome: <https://www.sustainablefashionweek.uk/frome>

Bath Spa Uni: <https://www.sustainablefashionweek.uk/ndfs>



Are you a Landowner (or do you know one locally?)

If so, you may be able to help National Highways plant 3 million trees by 2030....

National Highways has secured a supply of UK native trees grown peat free from a variety of seeds of UK provenance. The seeds will be grown to 2-year, bare root whips of 450-900mm in size, and the first 600k whips will be ready to leave the nurseries for planting from next month, and then 600k every year thereafter until 2029. National Highways only has enough room on its own estate to plant fewer than 10% of the 3m trees, so they are looking to engage with organisations that own or have access to land available for tree planting. The young trees are available free of charge, subject to the following criteria:

- The planting should aim to deliver social value and environmental benefits, in line with National Highways' objective to support their Social Value Plan 2022-2024 and Environmental Sustainability Strategy.
- The trees must be 'additional' to any contractual or legal restoration requirements. They cannot be used to offset existing commitments, but they may be considered in cases where for example you want to increase numbers beyond the minimum requirement.
- National Highways will only consider applicants that will be planting the trees in England.
- The trees must provide a legacy for the future and cannot be planted for example as a biomass fuel source.
- The whips must be planted during the winter planting season (ideally November – February). The nursery will deliver the whips to the chosen applicants from October

The objective is for the grower to maintain the trees for a minimum period of 5 years. National Highways can provide that maintenance; however, such an application will score lower than those who can provide maintenance. At the end of the 5-year period the trees will remain in the ownership of the tree recipient and the on-going maintenance is expected

For more info: <https://nationalhighways.co.uk/our-work/environment/increasing-tree-planting-across-our-network/>



September is "Catch the Bus" month

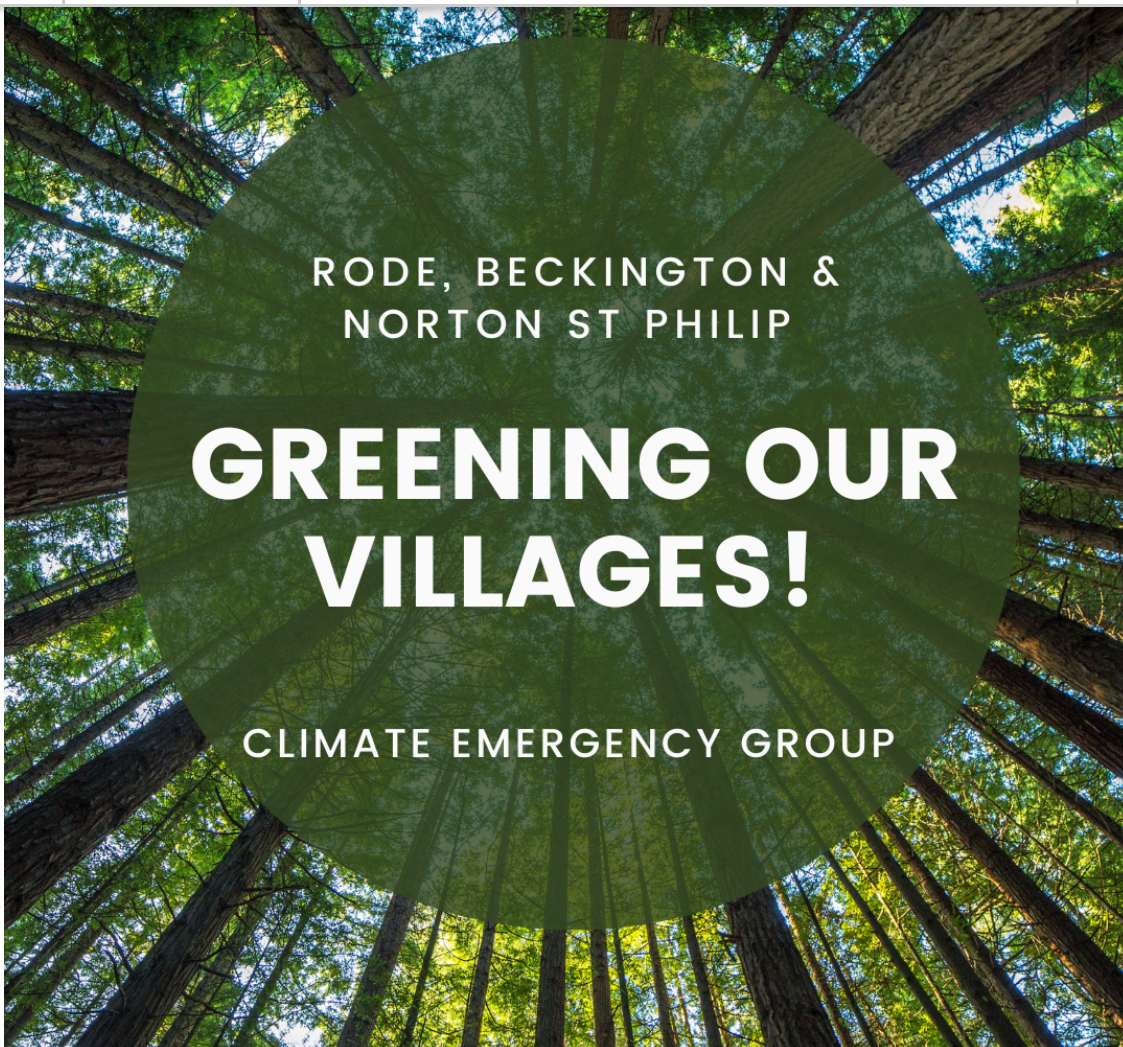
Catch the Bus month is an initiative set up to ensure everyone has access to public transport. Not only are buses great for improving health and wellbeing, they are also great for the environment and perfect for connecting communities. If you're not a regular bus user, now is the perfect time to start! Especially as the government has confirmed the continuation of the £2 single bus fare at least until the end of this year (£1 single for those aged 5 - 16, and under 5s are free!). Even if you own a car, taking occasional journeys by bus will help support services for those who don't have easy access to their own vehicle (and also avoid the parking hassle/cost!)

some small reductions in the service in the middle of the day. Despite this, the villages of Beckington, NSP and Rode are currently very fortunate, with good services at the weekend, and late evening buses to/from Bath and Frome. In addition, it's worth highlighting that the D2x is temporarily re-routed via Radstock as a result of the A36 road closure, and therefore will not be serving Beckington until Spring 2025.

This year's Catch the Bus campaign theme is accessibility, and FirstBus has been working with many disability groups around the UK to design some journey assistance cards that can be shown to the driver as a way of discretely asking for a little extra help if you'd rather not ask them out loud (If you don't have access to a printer you can take a screen grab of the Extra Help To Travel card (Journey assistance card) on your mobile phone and show this to the driver instead).

You can download the Extra Help to travel cards (Journey assistance cards) here:
<https://www.firstbus.co.uk/help-support/special-assistance/extra-help-travel>

NB: The picture above includes Rode's very own Bus Champion, Peter Travis (right), MP for Frome & East Somerset, Anna Sabine, and Frome Town Councillor, Philip Campagna (left).



The Climate Emergency Group is now on a "sabbatical"....awaiting new leadership! If you think you could be the person to take on that mantle, please drop me a line....and, if it's not you, but you know someone who could be interested, please ask them to get in contact.

Email: jim.mcauliffe@btinternet.com



Want to change how you receive these emails?
You can [update your preferences](#) or [unsubscribe from this list](#).