

The Link

The magazine for Rode, Tellisford, Woolverton and
Farleigh Hungerford, part of Hardington Vale



SEPTEMBER 2021

Groups & Events News

Community Volunteers Needed See Pages 10 & 12

The Big Green Week 18-26th September

...and so very much more local news and info inside!

£1

PARISH OF HARDINGTON VALE

RECTOR

Rev Caroline Walker
The Rectory, Vicarage Lane,
Norton St Philip, BA2 7LY
01373 834258
carolinehwalker@btinternet.com
Day off:- Friday

CURATE

Rev Jo Robinson
The Old Rectory, 38 Church Lane,
Rode
01373 831381
321jorobinson@gmail.com

READERS

Barbara Day
Brewery House, North Street, NSP
01373 834438
Barbara.day04@gmail.com

Michael Harrison
51 Fortescue Street, NSP
01373 834086
michael.harrison@bcs.org

PARISH ADMINISTRATOR

Ros Clarke
The Hub Office, Norton St Philip Church
Mon, Tues and Wed 8.30am to 12.30pm
01373 834488
admin@hardingtonvale.org.uk

PCC TREASURER

Nick Brown
Norton St Philip Church BA2 7LY
01373-834488
Treasurer@hardingtonvale.org.uk

PCC SECRETARY

Tony Day
Brewery House, North St. BA2 7LE
01373-834438
secretary@hardingtonvale.org.uk

ELECTORAL ROLL OFFICER

Ros Clarke

PARISH WARDENS

(with specific responsibilities in brackets)
David Lockley (pastoral&outreach) 01373 834414
Christopher Todd (strategy) 01373-834856
Geoff Banwell (finance) 01373 831139
Chris Cloke (buildings) 01373 834917

CHAPEL WARDEN

Farleigh Hungerford:
Guy Hungerford 01249 701211
Tellisford:
Rachel Fielden 01373 830322

DEPUTY WARDEN

Role:
Sally Pickett 01373 831796

ELECTED PCC MEMBERS

Andrew Morrison ¹, Barbara Day ¹, Robin Finlay, ¹
Sharman Flindall ¹, Andy Filkins, Susie Filkins,
Rachel Feilden ³, John Flindall, Francis Green ⁴,
Rachel Stewart, Anne Harkness, Ros Lockley,
Sally Pickett ³, Michael Walker
¹ Deanery Synod Representatives
² Safeguarding Officer currently vacant
³ Chapel or Deputy wardens at Farleigh
Hungerford, Rode and Tellisford.
⁴ with specific responsibility for Hemington
churchyard

CHILDREN AND FAMILIES WORKER

Sue Rodford (kidschurch@hardingtonvale.org.uk)

THE LINK MAGAZINE : is published by the
Parochial Church Council which reserves the right
to edit any material submitted for publication.
Opinions expressed are not necessarily those of
the PCC, the Rector or the Editor.

Editor

Gill Leonard edits and produces The Link
01373 831072 link@rodevillage.com

Subscriptions/Distribution

Caroline Williams
01373 831046 link@rodevillage.com

Advertising

Gill Leonard
01373 831072 gillhleonard@aol.com

HARDINGTON VALE WEBSITE

www.hardingtonvale.org.uk

Hemington and Hardington are in the care of the
Churches Conservation Trust contact Helen
Booker hbooker@thecc.org.uk 07831 873489

RODE CHAPEL METHODIST- BAPTIST

Minister: Rev Tina Swire 01749 595759
Secretary: Bill Jackson 01373 830411
rode.chapel@btinternet.com
Key Holder: Alison Hughes 01373 830244
rode.chapel@btinternet.com /830411

USEFUL COMMUNITY CONTACT DETAILS

Organisation	Contact Name	Contact Number
Allotments - Rode Rode Gardens Association	Lucy Travis (Chair)	831726/Lucy_travis@hotmail.com
Buddy Scheme (Rode)	Mike Salmon	831257/mikesalmon123@icloud.com
Community Speed Watch (CSW)	Malcolm Wood	830301/mwood17@uwclub.net
Cricket Club (NSP) Youth & Seniors	Mark Finch	07876 191100
Friends of Rode and Norton Schools (FRANS)	Brandon Quentin-Hicks (Joint Chair)	brandon@bambooohouse.co.uk 07867 545720
Gardening: Rode & District Club	Averil Morrow	830686/averil.morrow@yahoo.co.uk
Ladies Group (Rode)	Pat Banwell	831139
Lunch Club (Over 60's)	Alex Sing	Asing_homeandgardens@hotmail.com/830836
Memorial Hall (Rode)	Bookings: Kate Robinson	rodehall@bananasoft.net eves only 830202 www.rodevillagehall.co.uk
NSP Pre-School	Dawn Strand	admin@nortonpreschool.co.uk/834791
Old School Room Farleigh Hungerford	Dilys McKechnie	01225 754925
Over 60's	Pat Smith	830559
Parish Council - Rode	Hugh Williams (Parish Clerk)	Clerk.rodeparishcouncil@gmail.com rodeparishcouncil.webs.com
Parish Paths Liaison Officer	Caro Smith	caro.a.smith@gmail.com/830911
Playing Field/Pavilion (Rode)	Bookings: Chair: Nigel Clarke	rodepfbookings@gmail.com biz.nibex@btinternet.com
Post Office (Rode)	Demi Ward	830321
RANS Running & Walking Club www.facebook.com/TeamRANS	Brandon Quentin-Hicks	brandon@bambooohouse.co.uk 07867 545720
Rode & NSP First School Federation	Headteacher: Georgina Muxworthy	830523
Rodevillage.com Website & Twitter Feed	George Berry	info@rodevillage.com http://twitter.com/rodevillage
1 st Rode Scout Group Beavers Wed 4.45-5.45pm/Cubs Thu 6-7.30pm/Scouts Thu 7-.30pm During school term time	Group Scout Leader: Howard Russell	hdrussell01@gmail.com 830640/07736 739680
Scouts Edor Explorer Unit Every other Tuesday 8-9.30pm in term time	Marcus Bradshaw	explorers@rodevillage.com/07713 165312
Village Agent	Nic Edwards	07946 461468/ nicolae@somersetcc.org.uk
Walking Group	Liz Dinnis	elizabethdinnis49@gmail.com/07788 656337
Community Transport & Local Government & Closest GP		
Community Transport	Mendip Community Slinky Bus Bookings Frome Community Cars	01749 880613/www.menfopcommunitytransport.co.uk 01749 880482 07596 591391
Mendip D C	General Enquiries	0300 303 8588
Somerset C C	General Enquiries	0300 123 2224
County Councillor	Linda Oliver (Conservative)	loliver@somerset.gov.uk/834210
District Councillor	Barbi Lund (Green Party)	Cllr.lund@mendip.gov.uk/07846 335636
Beckington Family Practice	Appointments T: 830006 Results 9.30-13.00/14.00-16.00 T: 867986	Enquiries and Emergencies T: 830316 Dispensary 8.30-13.00/15.00-18.30 T: 867987
NHS 111 24 hour medical care help	Contact 111 if you have an urgent T: 111 Online: 111.nhs.co.uk	medical problem and you are unsure what to do
Frome Rural Beat Neighbourhood Police Team	PCSO 9011 Russell Ford PCAO 9800 John McNally Beat Mgr PC 2673 David Cohen	Russell.ford@avonandsomerset.police.uk/07547658018 John.mcnally@avonandsomerset.police.uk David.Cohen@avonandsomerset.police.uk

Church Reflection & News

REFLECTION

"Be Praised, O God, for our sister, mother earth, who sustains and governs us and produces diverse fruits and coloured flowers and grass" Francis of Assisi.

There is a feeling that we might be reaching the beginning of the end of the pandemic, at least in the UK. Hopefully this might be true. It's been a long drag. One of the activities that has sustained many of us who have been able, is walking in the open air. One of my favourite places has been Wellow Lane in Norton St Philip. It is a very beautiful and it has been sounds of birds and wind in the trees that has been refreshing, as well as the sights. I am aware how many more species of flowers and grasses have appeared since the council ceased its regular cuts. I love them and so do the bees. Those in Rode might think of the path to Tellisford through the River Valley.



My daughter lives in Weston in Bath and her favourite place for refreshment and exercise has been the steep fields above her home, up to the skyline by Beckford's Tower. I walked there with her at the end of June. The fields were magnificent, full of meadow flowers. The higher we went, the more diverse the species became, and there were masses of pollinating insects. The fields are grazed by cattle and cut for hay, and whoever is farming it is managing it very well, perfectly timing the grazing and the cutting.

It made us realise what we have lost. This sight would have been commonplace at the beginning of the twentieth century, but since the 1950s we have lost over 90% of our wildflower meadows through excessive use of chemicals in fields and gardens, the production of vast monocrops in our fields and the over concreting of our land. We are rapidly losing our pollinating insects. This has a knock-on effect on other species and eventually humans. We can't eat if our crops aren't pollinated.

Thankfully, there is land left. Verges that cover the size of Dorset, parks in towns, and gardens. There are also those recreational spaces around us we enjoy, that managed well could encourage these beautiful native species back again. Nature is very good at regeneration if we give it a chance. Personally, I see the touch of God in that. Creation can be very good if we give it half a chance. The Bath and Wells Diocese has been running a course in conjunction with Somerset Wildlife and Care For God's Acre called Wilder Churches. A few of us have been attending. There is a possibility that we can allow our churchyards to become even more beautiful places, somewhere that birds and insects and a diversity of plants can flourish.

Church Reflection & News

It takes creative thinking and a bit of careful management and we might be surprised and pleased at the result. So let's look around and reimagine some of the spaces around us. It might do us good.

Barbara Day

Hardington Vale Reader

NEWS FROM ST LAWRENCE

We can sing again! Yes, since the easing of restrictions we are able to sing hymns in church. Our organist David Thomas has been fantastic at entertaining us before the service and afterwards with his wonderful organ playing and now we are delighted to be able to ask him to play the hymns during the service for us to sing along to. We are enjoying the benefit of our new lights and would like to thank the sponsors once again as well as Keith Sharman who kindly waived his charge for fitting them.

By the time you will be reading this, the Reverend Jo Robinson will have moved into The Rectory in Church Lane in Rode and if you haven't met her yet socially or through the school or church you may well see her walking her dog around the village so please welcome her to Rode.



With the easing of restrictions, we will be looking to reboot our fund-raising activities through the Heart of Rode. We hope to bring back Rode Roxy in the autumn and before that we will be holding our bottle stall at the village fete. More information to come on the future of Rode Roxy and other fund-raising activities.

Those of us who attended the confirmation service in Norton Church at the beginning of August were delighted to see several Rode people being confirmed. It was a very moving and uplifting service and one which I am sure will stay with all those who attended and particularly those being confirmed.

During the previous week four of our congregation from Rode were baptised by our Rector, Caroline, in the River Frome. Lucia Chadwick, Roslyn Owens, Victoria Stoate and Peter Stratford were all fully immersed in the river a little downstream from Rode Bridge. These are our first baptisms in the river for several years and this was a very special occasion – see page 4 about this.

Sally Pickett and Geoff Banwell

Church Reflection & News

WAS A LOCAL FULL IMMERSION BAPTISM POSSIBLE? YES!!

On 5th August 2021 in the river by Rode Mill five people were baptised: Roslyn, Peter, Victoria, Alice and myself. The idea of the baptism had started as a last minute - would it be possible - suggestion by me to be 'dunked' somewhere in the river, a place that was very special to me, but quickly grew into something far more special.

*The Lord bless you and keep you;
The Lord make his face shine on you and be gracious to you;
The Lord turn his face towards you and give you peace.
Numbers 6:22-27*

The day before the baptism we were still not sure whereabouts we would be able to do it. Bill and Ros Jackson at The Chapel had shown me a painting of the area where John Wesley had baptised in the past and where he had created steps into the river just downstream of Rode Mill. How wonderful it would be if we could get baptised there. David Jupp gifted us that blessing. He kindly and extremely generously allowed us to use his land which sits just along from the 'John Wesley steps' and was the most perfect, beautiful, safe and private spot for us to gather. It even had a viewing area. What a rich and wonderful blessing. David made us feel so welcome and had worked hard to make it safe, and accessible.

The day was particularly wet with the August rain not letting up. We were going to get wet anyway, so what did it matter. As I stood by The Mill car park I watched people arrive. It was not just a handful of friends and family, but around 50 people including a group of musicians made up of my dear friends. And the best bit? There was intrepid Caroline Walker in a wetsuit and dog collar! It was an incredible scene and as we looked up the blue sky appeared and sun popped out from behind the clouds! It was a perfect sunny evening.



What had begun - just two weeks earlier - as a last-minute suggestion and a request to get baptised, informally and with just a few friends and family in the river somewhere near The Mill had grown almost overnight into a community gathering and a collective blessing, in a beautiful setting, as we came together to celebrate one another and to immerse ourselves in the flow of God's beautiful creation.

Church Reflection & News

Through my faith I have been given eyes full of wonder. I struggle, like we all do, but with God I see each and every day the beauty, wonder and love that is poured out to us. Life has its up and downs and it is not easy for any of us, but I am so incredibly grateful for the many blessings I am given not because I have earned them or that I deserve them. I receive then despite what I do or who I am. Every step of the way I feel the strength of God by my side. Our baptism day with Peter, Victoria, Roslyn and Anna was proof of that! Wow! All our friends & family there in that beautiful, perfect setting. That was love in abundance!

Thank you to all who made the day so special for us especially Rev Caroline Walker, David Jupp, Becky & Steve Rhodes, Bill and Ros Jackson, Fergus Stewart, Tony Day, Beth Harrison, John Flindall, and Steve Howell.

*In these waters, healing mercy flows with freedom from despair
I am going, to that river Lord I need to meet you there*

*Precious Jesus, I am ready to surrender every care
Take my hand now, lead me closer Lord I need to meet you there*

*Come and join us, in the river Come find life beyond compare
He is calling, He is waiting Jesus longs to meet you there
He is calling, He is waiting Jesus longs to meet you there*

*Precious Jesus, I am ready to surrender every care
Take my hand now, lead me closer Lord I need to meet you there
Take my hand now, lead me closer Lord I need to meet you there*

Brian Doerksen

Lucia Chadwick



Church Reflection & News

MORE SAFE PASSAGE UK NEWS, HV'S NATIONAL CHARITY

Hardington Vale Parochial Church Council supports Safe Passage UK, a charity helping child refugees access legal routes to safety, and now all the news channels are showing desperate footage of Afghans trying to leave their own country for fear of the Taliban regime. Safe Passage UK has sent an update on their activities in the current crisis for child refugees. (Refer to www.safepassage.org.uk/how-we-work for more information.)

In their view, the Government's response to the needs of Afghans goes nowhere near far or fast enough. Every day more and more people are trying to flee the country, yet safe routes are closed for the thousands who need them. So this charity is campaigning for a new safe route for child refugees, so that all those fleeing the Taliban will be able to reach safety, reunite with their families, and rebuild their lives.

Already, two-thirds of the children supported by the French team are Afghan, and that number will continue to rise as more and more escape the Taliban. All Afghan children need a safe route to sanctuary. Many have family already in the UK that are desperate to look after them.

In January, the Government closed refugee family reunion from Europe, and in doing so closed the most straightforward route for child refugees to reunite with their families. Now, the only path available to these children is the complicated **'entry clearance immigration rules'**. These rules are so restrictive that many child refugees no longer qualify. The Government is closing the door on child refugees when safe routes are most needed. Hear Ridwan, who arrived in the UK via family reunion laws, speak about what we lost on December 31 2020: twitter.com/safepassageuk/status/1326921146479030273

This is why Safe Passage UK is fighting for new safe routes, so no child currently fleeing the Taliban will be kept apart from their families who can care for them.

On Sunday 7th November, Maya Alexander, Development Manager at Safe Passage UK, will be speaking at St Lawrence Rode at the 10:30am service to give us a first-hand account of this charity's activities.

Meanwhile Safe Passage continues supporting children in country and after their arrival in UK and welcomes any help that we can give.

Rachel Feilden
Chapel Warden, All Saints' Church, Tellisford, member of HV PCC

Church Reflection & News



**SATURDAY
11th SEPT. 2021**

***Have FUN, FELLOWSHIP, and
raise FUNDS for the FUTURE***

**Somerset Churches Trust gives grants to help
fund repairs and improve facilities in Somerset's
churches and chapels.**

**Get sponsored for churches visited on foot,
bicycle, horse or even car, or doing anything else!**

**All funds raised go to SCT
and 50% can be passed on to a church, chapel or
registered charity of your choice**



Registered Charity Number:
1055840

Prizes for the most money raised!

For more information visit:
www.somersetchurchestrust.org



Find out more at
www.somersetchurchestrust.org
Charity number 1055840

supported by the
National Churches Trust



Parish News

APOLOGIES FOR YET ANOTHER LATE LINK ARRIVAL...

Afraid we now have a hat trick as yet again my best laid plans floundered.

Apologies once more to all our readers and distributors for the delay.

As I mentioned last month, the problems encountered in producing these recent issues underline the fact that The Link really does ideally need more than one person to be involved and responsible for its editing, production and paying advertisers.

But sadly, as with various pleas in recent years since I found myself in this situation no one has yet expressed any interest... if you would like to know more, please don't hesitate to contact me to discuss how you might be able to get involved – even in a small way.

Gill Leonard

Editor

T: 01373 831072 E: gillhlleonard@aol.com

GIANT SUNFLOWER COMPETITION

Have you spotted any giants around Rode? I hope so!

We have been around the village checking out and measuring some giant sunflowers across all categories – adult, children's and school!

If you have entered the competition but haven't yet got in touch about your sunflower, I would love to hear how you're getting on and see your sunflower - the deadline is 7 September.

We will announce the winners soon after the deadline and award prizes for your great efforts! Thank you everyone who has entered! There are talks of a longest carrot competition next year...so watch this space.

Julia Robb

E: juliarobb@hotmail.co.uk. T: 07527 918314



Parish News

THE RETURN OF SCOUTS FUNDRAISERS AND EVENTS... 3!!

The first, a new fundraising idea, will be on Sunday 31st October 2021 at Rode Village Hall from 2-4pm and it is:



A Silent Auction and Cream Teas!

We are looking for donations of bric-a-brac, nick-nacks, unwanted gifts, books, toys and small items of furniture for the above event.

Items can be brought along to the village hall on Saturday 30th October between 2pm and 5pm, however, if you cannot get to the Hall, we can arrange to collect them during the week prior to the event, so please contact us on the 01373-830640. Please use this number if you need clarification on what you're donating. Please note small items of furniture will be accepted at the discretion of the organisers.

On the day of the event, at 2pm, each item will have a lot number and sheet, if you are interested in something just put your name down and what you want to bid onto the sheet, do check again as it is possible to be out bid, this makes it very exciting!!! You may then need to up your bid.

At 3.50 pm you will get a warning whistle giving you just 10 minutes to secure your bids, at 4 pm the final whistle blows and everyone must step away from the tables, stewards will then highlight the winner of the lot. A payment area will be set up with several paying points to claim your lot. Watch this space for more details.

This is a fun event and a great way of recycling things you no longer need; you will also help to raise valuable funds for the rebuilding of Rode Scout Headquarters.

More details to come on the next two events in future issues but do make a note in your diary to save the dates!

The second event will be the return of Rode's Remembrance Sunday Parade on Sunday 14th November.

The third event, on Saturday 29th January 2022, will see the return of the very popular "Bangers and Bingo" fundraiser.

Howard Russell

Group Scout Leader 1st Rode (Major) Scout Group

Parish News

PUBLIC PATHS LIAISON OFFICER

I have been the Public Paths Liaison Officer, as a volunteer i.e., unpaid, for Rode PC since the beginning of 2019, happily walking the public footpaths in and around the village, clearing them when overgrown, dealing with queries from the public, issuing permits for the River Walk and liaising with my contacts at Somerset CC and Rode PC over any problems. I also have had to make a short report to Somerset CC once a year.



I would willingly have gone on with this position, but unfortunately, I broke my right wrist quite badly in June (yes, my dominant hand!) and because of some nerve damage it is not healing as it should. I am shortly going to have an operation and the consultant told me yesterday it will take a year to recover.

I've been told the paths are getting overgrown and as I'm not able to walk comfortably at the moment I think I need to find a replacement PPLO. Is there anyone out there in Rode who would like to take this on?

People are increasingly using the footpaths since the pandemic began, and the government is encouraging walking to make us all fitter, and to lessen our CO2 production, so it is an important small way to contribute to these aims!

I tended to cover the footpaths once a month when I was fit, and the other duties are not that time-consuming.

If you would like to know more, please contact me on 01373 830911/email: caro.a.smith@gmail.com

Caro Smith

200 CLUB

The winners of the July 200 club draw were as follows:

1st prize £50 Lisa Restorick
2nd prize: £25 David Donnellan

Jan Jupp



WALKING ROUND RODE

An increase in the use of footpaths round Rode has occurred since the first 'Lockdown' and this continued use is encouraged. There are a large number of footpaths round the village which can be easily accessed and people have in the last year or two discovered a number of new walks they can take. The best way of checking where these footpaths are is from the Somerset website: <http://roam.somerset.gov.uk/roam/map> This site also gives all the footpaths throughout Somerset for those looking for walks further afield.

It is important that people use the designated paths and do not wander across farmland or go through places which are not official paths, as has been reported recently. Should any path be impassable this can be reported through the above website or, normally, directly to the village Public Paths Liaison Officer (see article on previous page); or currently to the clerk of the Parish Council (via www.rodevillage.com/parish-council/).

Don't forget there are monthly local walks arranged by Liz Dinnis – see page 27.

Hugh Williams

PLAYING FIELD LOTTERY

Playing Field Lottery winners in July 2021, drawn in The Cross Keys by Beth Restorick were:

1st - £50.00Dale Weeks, Rode.

2nd - £25.00 Jane Sharman, Rode.

3rd - £25.00 Peter Barnes, Rode.

Sunday Roast for two, Jerry Bond, Rode. Thanks again to Mark and Hannah.

If you'd like a chance to get a slice of this action, remember only 200 tickets available and a share of £100 and two Sunday roasts all possible for £1.00 per ticket! And you are supporting the Playing Field when you buy your ticket. Tickets are on sale at the Post Office, or directly from Jane and I. Next draw Thursday 30th September.

If anyone would like to do the draw or witness it from a suitable social distance then please feel free to do so. Just ask.

Keith Sharman

T: 830408

Parish News

RODE COMMUNITY SPEEDWATCH NEEDS YOU

We are looking for new recruits to join the Rode Community Speedwatch team. Rode CSW consists of a team of people passionate about maintaining safe speeds in and around Rode.



How often as you leave the house, walk the dog, take children to school or pop in the post office do you comment on the speed of cars. You may have seen groups of us in yellow jackets on Rode Hill, Bradford Road or the A361 near the Bell with a small “gun” checking speeds. All have a 30mile/hr speed limit. I have to say that generally our local traffic is well-behaved, but exceptions always prove the

rule and we estimate 10% exceed the speed with speeds of 50+ on occasion.

We also manage the Speed Indicator Device, SID, an automated process that records the cars and speeds every day. A regular report of conditions around the village is shared with the Parish Council, Mendip and the Police. Data used to support road improvements, planning and road safety signage. Recently approved plans for 20mile/hr zones in Rode demonstrates that.

We are part of Avon and Somerset Police Community Speed Watch, a partnership between the Community, the Police and Local Authorities. Local people actively involved in road safety. Willing volunteers offering a small amount of time each week are trained and have access to speed detection equipment. Vehicles observed speeding are sent a warning letter along with advice to help their driving behaviour. Further action is taken by the police against persistent and high end speed offenders as well as targeting individual locations.

Can you spare an hour a week to help keep Rode safe?

We would welcome new members to the Rode CSW team; yellow jackets are on offer! We are looking for volunteers who can help us help the village to be safer for our families. Timing for it is flexible. We plan ahead but last minute changes supported. Look forward to hearing from you soon.

Amanda Eyles

E: amandajeyles@gmail.com T: 07519442633

WRISTBANDS TO SAFEGUARD PEOPLE WITH DEMENTIA

More than 1000 wearable tech wristbands have now been handed out as part of the Avon and Somerset Dementia Safeguarding Scheme, launched last year in collaboration with the Senior Citizen Liaison Team Charity.



Using Near Field Communication (NFC) technology, the wristband stores essential information about the wearer, including their name and details of next of kin.

This information can be used by emergency services, health professionals or community members to get the wearer back to safety should they be found whilst lost or confused.

There are still plenty of wristbands available to the public and care homes, free of charge thanks to charitable funding.

Sergeant Stuart King, who leads the initiative in addition to his role as a response officer said:



“I have been overwhelmed with the positive attention and wider support this scheme has received from the public. To hear the positive feedback and reassurance that the scheme brings to families and the people living with Dementia makes it all worthwhile. I would like to thank Bristol Dementia Action Alliance Charity, Senior Citizen Liaison Team Charity, Wessex Water, Bristol Water and Western Power Distribution for the funding to purchase the NFC wristbands.”

To apply for a wristband, visit the Dementia Safeguarding Scheme (also known as the Herbert Protocol). If someone you know has dementia register for the Dementia Safeguarding Scheme, you can sign up for the Scheme online: www.avonandsomerset.police.uk/forms/dss

Further support for families affected by dementia is available at the Avon and Somerset Dementia Forum on Facebook: www.facebook.com/Avon-and-Somerset-Dementia-Forum-223932471281955

Parish News

SOMERSET COUNTY COUNCILLOR UPDATE



- ### Somerset Waste Partnership Service Update

(as of 20th August) - After missed recycling collections for the 2nd week in one area of NSP and other villages also having one missed collection last week, Thursday and Friday this week saw a full deployment on all rounds. No significant collections are expected and SWP state they should see the improvements sustained next week, with the small number of “dropped rounds’ returned for. This means all rounds caught up and back to weekly recycling collections. This does not mean “no more missed collections”. SWP make 400,000 plus collections every week and a small number of missed can and do happen every day.

- It is important that you report any missed collection online if possible, using the My Waste Service menu on the SWP homepage www.somersetwaste.gov.uk. The more residents that report missed collections in a street for example the better. If only one person does so it may be assumed that this is an isolated missed collection. SWP remain cautiously confident about service stability in the coming weeks. Services are fragile and unexpected pressures for example from Covid or severe weather could have a big impact. Garden waste collections are scheduled to restart from 13th September. Please note, this would not mean collections for all customers on this day. They will take place on their first scheduled collection day after 13th September.

- Covid** - Despite significant progress and even for those who have had both jabs it is vitally important to remember, to observe Hands-Face-Space and to Ventilate indoor areas at all times. Somerset Coronavirus Support Helpline: A single phone number continues to be available for anyone in Somerset who needs Coronavirus-related support. 0300 790 6275, is open seven days a week from 8am to 6pm. Vaccination programme roll-out: Somerset continues to have one of the highest vaccination rates in the country with the latest figures showing over 93.7% of the adult population having had one dose of vaccine and 77.4% having had both doses. Work continues to encourage further take up particularly amongst younger adults and a real focus on ensuring the second vaccine to this group.

- ### Local Government Reorganisation - The Secretary of State for Housing,

Communities and Local Government (MHCLG) has delivered his decision on which unitary council business cases met his three tests

Local Government Reorganisation in Somerset		
Criteria for how the decision was made:	Selected approach	
	One Somerset	Stronger Somerset
Improve Local Government and service delivery	✓	✗
Good deal of local support	✓	✓
Credible geography	✓	✗

and will therefore be progressed through Parliament. A single unitary met all

Parish News

of his clear tests including the ability to improve local government and services. It is expected that the orders will be laid before Parliament in the late Autumn and a vesting date of the new authority as April 2023. Work with partners will now commence to progress through the transition period.

- **Tick Warning** - With the warmer weather come ticks, which thrive in woodland, long grass and even urban parks. SCC has put together a 'tick list' to follow to reduce the risk of being bitten including: Walking on clearly defined paths, wearing light coloured clothing, using an insect repellent, wearing long trousers and long-sleeved tops to reduce the skin exposure and carrying out a regular tick check after outdoor activities. Being bitten by a tick doesn't usually require hospital treatment but people are advised to dial NHS 111 if they start to feel unwell.
- **Reflections of the Pandemic** - The Somerset Library Service is inviting people to share their experiences of the last sixteen months, to be recorded for future generations. As part of 'Reflections', a county-wide creative response to the pandemic, libraries will host a series of free drop-in sessions throughout August and online via social media. The collaborative artwork and film will be given to the South West Heritage Trust as a 'record' of the experiences of Somerset people during the pandemic. The film and artwork will then be showcased at the evening 'Reflections' event to be held on the 10 September. This initiative forms part of Somerset Libraries' response to initiative, funded by The BBC and Arts Council England.
- **Summer Holidays School Meals Support** - The Department of Work and Pensions has extended its Covid Local Support Grant, providing £1.4m to Somerset County Council who will use the grant to fund food vouchers worth £15 per week for children eligible for Free School Meals over the six-week Summer Holidays. SCC has been working to tackle holiday hunger during the pandemic, providing funding for food and vouchers over the October, February, and May half-term periods, as well as the Christmas and Easter holidays.
- **National Recognition** - Somerset County Council has been shortlisted for three prestigious national awards in recognition of its work during the coronavirus pandemic. The categories include 'Best Workforce Transformation' for its redeployment work during the pandemic, 'Community Heroes' for the work of Community Council for Somerset's Village and Community Agents, and 'Delivering Better Outcomes' for Somerset's Micro-providers, independent care providers who proved a lifeline for Somerset's isolated rural population throughout the pandemic.

Linda Oliver

T: 01373 834210 E: loliver@somerset.gov.uk

Parish News

RODE IN BLOOM – SUNDAY 8 AUGUST

Rode Grows and Shares, Rode and District Gardening Club and Rode Allotment Society came together to organise a garden competition and open gardens across Rode, Woolverton and Tellisford.

We had a wet and windy start, but it did not deter so many of you - it was a fantastic day attended by more than 120 people, visiting a variety of fifteen open gardens in Rode (including the Rode Allotments) and one in Woolverton, to come together and celebrate these gardens and everyone involved in making and tending to them. The afternoon was glorious and was a perfect end to the event!

We had a hub on the Rode village green for people to collect a map of the gardens involved, browse the plant/ gardenalia/ book stall and to see the children's planters displayed. Rode allotments were open, serving refreshments and selling surplus produce.

Rode Chapel Quiet Gardens and Chapel Grounds were open (as they are normally, a great open space in the centre of the village) and were serving refreshments raising funds for the Chapel.

The competition was judged by Janet and Marc Berlin, who live in Wingfield and are passionate gardeners and experienced judges – including Bath in Bloom. There was also a public vote for the best garden overall.

I am pleased to announce the competition winners as follows and their prizes:

- Planter/ hanging basket – Gail Stinton (won a voucher from Avonfield Nursery, Hilperton, and a plant from Downside Nurseries)
- Small garden – Elaine and David Walsh (won a voucher from The Village Baking Co. and a plant from Downside Nurseries)
- Large garden – Sharman Flindall (won a Sunday roast lunch for two from The Cross Keys and a plant from Downside Nurseries)
- Veg garden/ allotment – Becky Clarke (won some goodies from Fussel Fine Foods, a Michael Gane wildlife print and a plant from Downside Nurseries)
- Wildlife garden – Peter Barnes and Jennifer Douglas (won a hamper from Louisebees and a plant from Downside Nurseries)
- Children's planter – Georgie Bealing (won a signed copy of Plant, Sow, Grow and Make by Esther Coombs and a plant from Downside Nurseries)
- People's favourite garden – Sharman Flindall (won a floral bowl arrangement by Sara Peach Flowers)

Parish News

All runners up received a jar of homegrown flowers from our plot. In addition, there was a special commendation from the judges for Eilish and David Michell's new garden in Church Farm, who received a plant from Downside Nurseries.



Thank you so much to everyone who took part in the competition and open gardens, who volunteered with organizing and serving refreshments, to the businesses who donated prizes and to all of you who attended the event and donated. We are so grateful to you all!

I am so pleased to say that in total we raised £435.26 for the development of a community orchard and wildlife area on the section 106 land. This has now been donated to Nigel Clarke, Chair of Rode Playing Field and Pavilion for the project.

There are already many requests for making this an annual event, which would be fantastic! If you would like to be involved next year – either to help organise, volunteer, to open your garden or to donate prizes, I'd love to hear from you.

Julia Robb

E: juliarobb@hotmail.co.uk. T: 07527 918314

Parish News

THE PLAYING FIELD IS GROWING

The additional land, provided as part of the Section 106 attached to the Church Farm development has been transferred to the Parish Council and the Rode Playing Field charity has taken management responsibility.

Corncockle Wood anemone Cow parsley Columbine Thrift Daisy
Buttercup Harebell Cornflower Foxglove Teasel Chicory Bluebell
Lady's bedstraw Meadow cranesbill Field scabious Kingcup Cowslip
Bird's foot trefoil Self heal Ragged robin Musk mallow Bee orchid
Goat's beard Primrose Comfrey Sweet violet Wood forget-me-not
Field poppy Cuckoo flower Lily of the Valley Dog rose Corncockle

Many regular readers will know that the Committee have plans to develop this land to extend the benefits to the community of Rode by installing a community orchard and wildlife garden. We have identified some initial funding and in late July formed a group of Rode residents to design and deliver the development.

The team's first thoughts are to use part of the additional land to extend the playing area of the existing field landscaping the remainder to provide a recreational area, designed to encourage wildlife. This will comprise a mixture of wildflower area, interspersed with trees and mown paths with the addition of benches so that people can relax and enjoy a little piece of nature.

Sunday 8th August Julia Robb organised the Rode Open Gardens Day which was a fantastic success swelling our project funds by £435.

A big 'thank you' to Julia, her team and everyone who kindly opened their gardens for a thoroughly enjoyable day.



Nigel Clarke

T: 01373 830594 E: biz.nibex@btinternet.com

LOOK WHO I BUMPED INTO...

...and couldn't resist asking for a photo of so our readers could also see her stylish new work wear.

Yes, it's Jacqui Rottenbury, who has joined the team at Fussells.

Pictured here with an equally fetchingly attired Tim Fussell – Tim is also sporting the extra kit necessary for those with a beard, not a ventilated face mask!

Thank you for being a good sport and giving in Jacqui (and Tim) and every success in the new job.

Gill Leonard



STAFF NEEDED; HELP SPREAD THE WORD PLEASE...

You may have noticed we again have a third hostelry – much to the envy of many who thanks to Covid now have none in their local community.

The Red Lion at Woolverton is now open again and we will have much more on this in next month's issue. Sadly, like many such businesses nowadays at the time of going to print they are having recruitment issues.

SO, if you know of anyone who may be interested in working there, please do let them know there are vacancies and they should contact the new Landlord, Glynn Small, he will be delighted to hear from them. T: 07799 455428 E: gsmall50@hotmail.com.



Parish News

LAVERTON NEWS

I can't believe I'm writing the September issue - where did the summer go?

Laverton Church Fete - We were so lucky! The sun shone, the rain stayed away and we raised the magnificent sum of £546.10 - the best total ever! Thank



you to everyone who helped, came along and purchased bric a brac, books, produce, raffle, tea and cakes. And a big thank you to Gilli Weeks for treating us to a glass of wine and some nibbles while we were clearing up after the event. It was a splendid Laverton morning. (Photo to left Willow receiving her prize for the poster competition from Matt and to right Julia and Norma on the book stall.



Supposed to be a holiday with Grannie and Grandad...!!! Whilst walking our daughter's dog around the village we spotted Bob and Debby, with the help of their lovely grandchildren, armed with rakes, brushes and wheelbarrows - hard at work clearing the pavement of weeds between Old School House and the Church. They did a great job - well done Theo, Emily and Thomas (and Bob and Debby).



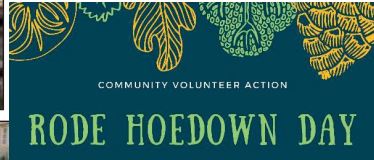
Laverton Summer Quiz in aid of Dorothy House - Well what can we say ... a huge THANK YOU to everyone who helped make this such a fab evening. Thanks to those who bought tickets, donated raffle prizes, drank the bar almost dry, helped with food, drinks, dressing the marquee etc., all of which went towards making it a brilliant evening. A special thank you to Norma Spruyt for letting us use her marquee and garden - we couldn't have done it without you 'wonderful people of Laverton! Thank you, you raised the magnificent total of £1,101.50 which has been forwarded to Dorothy House - they were delighted and are arranging a 'thank you acknowledgement'.

That's all folks.

Jackie Moss

Parish News

THANK YOU TO THE JULY 27TH HOEDOWNERS...



Parish Youth News & Events

GOOD NEWS FROM OUR LOCAL SCOUT GROUP

We are very pleased to say we have some new Leaders who have stepped up.

They are in the process of completing their basic training which includes DBS checks, safety and safeguarding (Child protection). Mitzi Harrington, Ellie Ellis and Helen Evans have completed theirs. Alex Harris, Lisa Lamborne and Alex Joyce are in the process of completing theirs. We welcome them all.

We are always on the lookout for anyone to join our Leadership Team so please get in touch if you are interested.

We are all looking forward to re-starting again but still taking precautions with section sizes and face to face meetings in the scout hut.

We have also changed times and evenings for some sections:

Beavers are now at an earlier time of 4.45-5.45pm on a Wednesday

Cubs now on a Thursday 6.00 -7.30pm

Scouts also Thursdays 7.00- 8.30pm.

Edor Explorers are still on every other Tuesday. 8.00-9.30pm.

Howard Russell

Group Scout Leader

1st Rode (Major) Scout Group



SCOUTS ON THURSDAYS

New Leader, new parent helpers, new Scouts, and a new evening!

We would like to welcome Mitzi, Lisa and Alex to the team and we are looking forward to meeting all our new members. We say goodbye to 5 older Scouts who have moved up to Explorers and welcome back to all our other Scouts.

Scouts will now take place on Wednesday evening and we have been busy planning an exciting and varied program.

John and I have decided to stay on as Leaders to help keep the section open but will in time step back as hopefully, we can encourage more parents to join up as Leaders and get involved in the fun!

Jacqui Rottenbury

Parish Youth News & Events

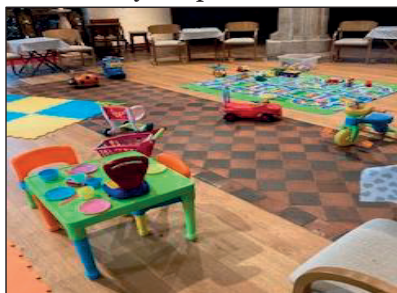
CHILDREN'S WORKER NEWS

I hope you have all had a wonderful summer holiday break and that you have been able to meet up with your relatives and friends with Lockdown rules relaxing. I look forward to resuming all my visits to NSP and Rode First Schools and Hemington Primary School. Also, my visits to NSP Pre -School and the new Mini Breakfast Church in St. Philip and St. James Church NSP from September.

Mini Breakfast Church - This will take place on the third Sunday of each month from 9.00-9.30am following the same format as MBC on Zoom at NSP. Our September theme will be 'Creation Time' and we will be planting a small garden on top of the bug hotel ready for the autumn and our mini beasts who would like to hibernate in our bug hotel or use it as a warm, safe place to shelter. We have spent the summer filling the bug hotel with nesting materials during our Caterpillar Club Wednesday afternoons.



Tots and Toys - Our babe and toddler group has got off to a very successful 'post Covid' start we have 20 families registered and over the summer holidays we have stayed open for all families. We now have a super space in NSP church



as some of the pews have been removed and with a kind donation from one of our families, we have bought new toys. From September we will be open on a Wednesday from 9.30-11.00am for 'drop -in', this means you do not have to book, and you can stay for as long or short a time as you wish. We offer refreshments for the grownups of a hot drink and cake for £2.00 and ask you to bring your own

refreshments for your babe and toddler. Our newest buys are some 'baby bouncer' chairs so that non mobile babes can sit and watch the older children playing. These are suitable from birth to 9kgs/20lbs and their parents/carers can enjoy their hot drink and cake with two free hands! Although, there are always free hands for a cuddle!



Sue Rodford

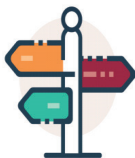
Children and Family Worker

E: kidschurch@hardingtonvale.org.uk T: 01373 812766

Parish Health & Wellbeing

PRACTICAL SUPPORT IS AVAILABLE IF NEEDED...

I hope like me you've enjoyed being able to meet others recently. More activities are starting up again and if you hear of anything, please let me know so I can share with our team and with everyone we speak



somerset **village** &
community agents
part of CCS

to. I attended my first Zumba class with Laney at Leigh on Mendip Village Hall this week. It was a lot of fun and a real boost, both physically and mentally! A big thank you this month goes to the Wainwright Community fund, for their generous donation, which will allow us to support local residents in need.

This month I'm including a reminder of our work and would welcome your help in spreading the word to any who may not have heard of CCS agents and how we can be of help.

What is a Village Agent? The Village Agent service is part of the Community Council for Somerset (CCS) and offers free, confidential, practical support to anyone in need, including community groups. We have unrivalled local knowledge and are problem solving solution finders!

I'm Nic, the Village Agent for the Rode area - I love the challenge of making a positive impact in our local community for people who need it most. It is very rewarding when a plan comes together, and a person's life is enhanced by the work I have done. I also love to chat! If needed, I work closely with your local GP surgery and the Adult Social Care team, so you have well rounded support.

Sounds Interesting but WHO can a Village Agent help? A Village Agent can help if...

- You are an unpaid Carer or looking after someone else informally & need a little help & support – for you and the person you care for.
- You are struggling with a problem that can be fixed or improved by accessing the right people or services in the local community, but don't know where to turn.
- You live alone and are feeling lonely and isolated.
- You are part of a community with a collective problem & need a kick start to solve.

It doesn't matter how big or small the problem, we are here to help. OK that's great – but HOW exactly can a Village Agent help?

Parish Health & Wellbeing

It's probably easier to list the things Agents CAN'T do! We don't like to pin down exactly how an Agent can help, as each person's situation is unique, but generally to make someone's everyday life better with the right connections, access to food, emergency funding or practical community-based solutions.

A few recent examples are:

- Supported clients to access transport so that they can attend their vaccination appointments.
- Delivered food to families and individuals who are shielding or isolating & set up an arrangement with the local food bank to supply food to clients.
- Source & arrange delivery of white goods, furniture & household items to people in need.
- Made sure that the clients are supported to get the financial help they need.
- Arranged translations for clients who don't speak fluent English but need our support.
- Supported people who need help collecting prescriptions.
- Conducted welfare calls on behalf of local GPs to ensure clients are safe and well.
- Gave emotional support to people who are feeling isolated and lonely.
- Supported people and particularly unpaid carers by brokering a microprovider who can help with daily living tasks to alleviate some pressure and provided respite meals for Carers.
- Supported elderly Somerset residents to 'survive winter' by making sure that they have sufficient heating and cooking facilities. Distribute Surviving Winter grants.
- Gifted refurbished mobiles to people who are cut off from their family & friends.
- Helped people to get home from hospital or temporary accommodation.
- Helping people to stay independent in their homes.
- Found & made connections between clients & the right community-based support.

If you think we could help you in any way please call me on 07946 461468 or visit www.somersetagents.org and request a call back. You can also email info@somersetccc.org.uk.

Thanks, and best wishes.

Nic Edwards

Parish Health & Wellbeing

Worried about your drinking?

The Over 50s Alcohol Helpline provides information, advice and support for older adults in the UK.

Call 0808 8010750

**we are
withyou**



HEALTH CONNECTIONS MENDIP

Health Connectors are part of your GP practice staff team and we can work alongside you in a number of ways.



We can work with people one to one, where we start by listening to what's important to you - this might be improving your health and wellbeing, meeting others, being connected to other services, getting more involved in your community, training, getting online, building confidence, or supporting others.

We also run groups such as Talking Cafes and Healthy Lifestyles programmes.

You could even do some short training with us to become a Community Connector - you can then go on to signpost others to support in your community.

There really are so many ways to get involved and use the service. It all starts with a call or do look on our website for a wealth of information. The service is free of charge and open to patients of Mendip GP Practices. Do contact us to chat through what support you might need or how you can get involved:

T: 01373 468368

E: mendip.healthconnections@nhs.net

W: www.healthconnections-mendip.org

Parish Groups

RODE MONTHLY WALKING GROUP

Last month we had an interesting walk through Woolverton and onto Laverton along the lanes, returning through fields to bisect Lullington lane and continue along the public footpath which emerges by the A36 Toll House, and back to Rode through the five fields.

Next month the walk will be on Thursday 2nd September as usual. Meeting at 10 am to walk the Freshford woods we start from the car park above Freshford, beside the A36 and opposite to the Hinton Charterhouse turnoff.



From the car park we will walk down through the woods to Freshford Mill, crossing the river and following the fields to the road which leads to Freshford village. Next, we climb back up the other side of the valley passing through Freshford and stopping at the cafe/shop for coffee before continuing uphill to the car park.

Please contact me if you require further information.

Liz Dinnis

E: elizabethdinnis49@gmail.com T:07788 656337

N.B. Future Walk Dates: Oct 7th/Nov 4th/Dec 2nd/Jan 6th

RODE OVER 60s CLUB

We were very pleased that our first post Lockdown meeting last month, the Cream Tea, in the Memorial Hall, on Friday 13th August was attended by 30 people.

Some of our Guests had not been to Over 60s before, thank you to all who came.

As explained at the Tea we will be waiving membership fees until next year.

Our next meeting – a Buffet Supper – is at 6pm on Friday 10th September at Rode Memorial Hall.

We look forward to seeing you there.



Ros Dymond

Parish Groups

RODE AND DISTRICT GARDENING CLUB

We are looking forward to starting our programme of talks and demonstrations in the autumn.



All talks this year are free and we look forward to welcoming lots of new faces.

- Monday 13th September 2021 'Growing Sweet-peas' with Julia Robb. Julia is well-known in the village for many gardening initiatives and runs her own gardening business.
- Monday 11th October 2021 'The X factor -10 tips for gardeners' with Neil Ross. Neil is a gardener and author with experience in New Zealand and at Sissinghurst.
- Monday 8th November 2021 'The Dry Garden ' with Martin Young.

All meetings start at 7.30pm in Rode Village Hall.

Averil Morrow

RODE LADIES GROUP

This is a reminder that Rode Ladies Group will be holding their first meeting since the Covid restrictions on Wednesday 22nd September at 2.30 pm in Rode & District Memorial Hall.

Thereafter the meetings will take place on the fourth Wednesday of the month.

Let's enjoy getting together again (while of course complying with any future regulations). On this occasion we will be joined by Claire Wilson who will be displaying Flamingo cards and stationery available for purchase.

We look forward to being re-united with existing members, and hope that potential new members will come and meet us too.



Pam George

N.B. Future Meeting Dates: Oct 27th, Nov 24th (all at 2.30pm)

Parish Groups

MONDAY LUNCH CLUB

We are very much looking forward to seeing all our Lunch Clubbers when we reconvene on Monday 4th October at the Village Hall! For those who are new to the village we meet on the first Monday of the month at our Village Hall and our members range in age from 60-90 years young - you need to be 60 to get in!!



We serve a two-course home cooked meal for the amazing price of £4 (bring your own wine if you want to as The Hall is Licenced) - please come and join us and enjoy the company of our fellow members and the very proficient Year 4 children from Rode School - It's great to see our young helpers mixing with our slightly older village members - who knew calling out the raffle numbers could be such fun?! Finally, if you need help getting to the Hall we can help out and come and collect you - just let me know! Our doors are always open and we welcome new members so please do come along and enjoy the company!!

Alex Sing and the Team

T: 01373 830838

RODE DANCING GROUP

Hello! How ARE you after all this time?! Hoping you and all your loved ones have been untouched by any nasties over the past two years, and that you are thriving in spite of it all. I have held off restarting the dance class, not only because I knew some people would be cautious about venturing out again, but also because I was waiting for a date for my hip replacement surgery! You may be surprised to hear I needed one, as it didn't stop me walking our two dogs for 2 hours a day, and dancing!

The op happened on 23rd July, so I am in the process of recovery, but thank God all is well. I was incredibly blessed to have the surgery at Sulis hospital (private) but on the NHS. We have been incredibly well taken care of by friends and family and BLESSED by loving-kindness!!

I do intend to resume dance classes again as soon as allowed!! PLEASE let me know if you are interested – previous group members and new all will be very welcome. We will probably resume again from October – watch this space...

Patti Moyes

E: pattimoys@gmail.com

Parish Farming

THE UPS AND DOWNS OF AN ENGLISH HARVEST

As we say goodbye to the last of the Housemartins, it's the start of seasonal change. How they have entertained us once again this Summer. The Swallows and Swifts have already left on their long return journey to Africa.

What a mixed few weeks of weather we have had! Searing heat for a few days followed by thunderstorms bringing cooler temperatures and intermittent showers. All in the mix for a typical English summer. The showers are the most frustrating for any farmer, particularly the Arable kind! You can often combine

the crop but cannot bale the straw as it needs to dry. You think you can go and bale and then we have another shower. So inevitably harvest is a little late this year. It's mid-August already and we have been harvesting for some weeks. It was a good start but then The Storm was forecast. We usually take the Barley off first because Rape follows the



Barley in our rotation. But when the storm was forecast, having made a start on the Barley, it was a race to get ALL the rape in. If heavy rain hits as the seed pods are ripe and ready, you can lose the whole crop! As the rain pummels the pods, they open and the seeds drop to the ground. That would have been devastating for Andy and Shaun, after losing 100 acres of Rape to the Flea Beetle last year. Saved by a whisker and some very late nights!!

Fine Foods are continuing with Tours (next 02.09.21) and also Speaking Engagements. Some W.I.'s opening for the first time in 18 months. We were recently at Coalpit Heath W.I., who were celebrating meeting for the first time, they also boast the youngest W.I. President in the Country!

Farmer's Markets: The Frome Independent will return on Sunday 5 September. It has been absent for some 17 months. We are looking forward to trading with the Frome Independent again. Axbridge and Nailsea continue to be thriving Farmer's Markets.

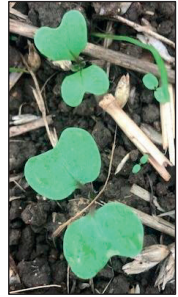
Shows/Events: Mid-August I had 2 days at Gillingham & Shaftesbury Agricultural Show. A very successful show and couple of days for us. It's one of my favourite shows, extremely well organised with lots to see, a great day out.



Parish Farming

September 11/12: Weymouth Seafood Festival, Frome Cheese Show, Ottery St. Mary Food & Families Show and St. Ives Food and Drink Festival.

Farm: Harvest is in full swing but with delays! HEAVY RAIN/SHOWERS/MORE SHOWERS! The Rape has now been drilled, a little later than we hoped but is now up and looking good. I love the glimmer of green when the tiny plants have germinated. Andy started cutting the Wheat on Monday 16 August, traditionally the day to start. It was a warm day and perfect for combining. Shaun was able to bale much of the



straw before we got a SHOWER!!

All the grain and bales are sold forward. The farm records and the tractor computer can tell you what the yield was in weight from the previous crop grown in any field and also how many bales to expect from the acreage. Such incredibly clever



technology.

Autumn: We are now heading towards 21 September, the Autumn Equinox and the Harvest Moon. Harvest will continue until everything is in; the fields being cultivated and drilled ready for next year's harvest. Shaun has been busy drilling winter barley and the winter wheat will follow.



The Maize is very tall this year and will be ready early. Many of the plants have 3 cobs coming when normally we expect 2 per plant. Andy will be cutting the maize himself this year. The 'Head' attachment will be different to the one used for the grain crops. Look out for him towards the end of September; it's quite fascinating to watch, especially from the cab!

And so, another summer is leaving us ... all too soon, I fear!

Take care.

Lizzy Etheridge

E:info@fusselsfinefoods.co.uk T: 01373 831286 www.fusselsfinefoods.co.uk

Parish Gardening

GARDENING IN SEPTEMBER

It's definitely been a mixed weather summer with some sunny days and high temperatures, to some milder temperatures, torrential rain and stormy winds!

As we are transitioning into autumn now, I am noticing hedgerow flowers and fruits more and more - the haws are starting to change colour, wild clematis and hops are flowering, and blackberries and sloes are ripening, which is always such a wonderful sight and now also triggers happy memories as we got married in early September two years ago and decorated with both hedgerow bounty and homegrown flowers.

It's a great time to be in the garden and there is lots to keep us occupied with tending, harvesting and reviewing on the main growing season.

Here are a few jobs for the month ahead:

- Watering – hopefully any pressure to water pots and beds will now get less and less but do still keep an eye on pots especially to avoid them drying out, and plants in greenhouses – which still can happen. It's better to water a good amount less often, than a small amount of water frequently – as this will encourage deep roots making the plant more resilient against dry conditions.
- Weeding – weeds should be slowing down but they'll still be around so try to keep on top of them, ideally before they flower and set seed.
- Staking – some plants may have got leggy with their summer growth and need some support to withstand any wind and heavy rain in autumn. It's not too late to stake them, definitely better late than never and will keep the interest going for as long as possible. Some earlier flowering herbaceous perennials may just need cutting back as the flowers may have gone over, but some may still be looking good.
- Hedge cutting – always check for nesting birds before you go about hedge cutting, it is now after common nesting time, but still possible. Conifer hedges can be given a trim now to keep on top of the size and shape. If you want your hedge to flower and fruit, such as pyracantha, hawthorn, blackthorn, then avoid cutting until after you or the birds have harvested in late autumn.
- Lawn care – keep cutting your lawn regularly if you want to keep the grass as full as possible but try to keep off when wet and alternatively raise the blades if we get a prolonged dry spell. As the weather cools, you can give your lawn some extra TLC by scarifying any moss or thatch (dead grass) out, aerating, top dressing and over seeding any patches.

Parish Gardening

- Planting – I think autumn is the best time to plant in your garden as the plants are not under as much stress and can take their time to root over winter ready for new growth next year (spring is the next best time). It is also a good time to see what you have in your garden, and make some decisions – do any plants need to be moved? divided and replanted elsewhere? any gaps that need filling? Ideally choose a mild day and when the ground isn't saturated, and it is always good practice to give plants a good soak to settle them in.
- Dividing plants - Many herbaceous perennials can be lifted and divided and is a very satisfying job making free plants to plant elsewhere or to give to someone else. It is best to leave this until after they have finished flowering.
- Seasonal planting – if your summer bedding is fading now, you can refresh your pots and planters with autumn/winter bedding plants and spring bulbs such as daffodils, crocuses, hyacinths for early colour next year – which is always a delight! Some summer bedding may still go on until the first frosts, especially in a sheltered position.
- Sowing seed – if you want to get a head start and have space, you can sow hardy annuals (e.g. ammi, cornflowers, sweet peas) in pots or directly in the ground, depending on the plant, for flowers early next summer. Sowing in autumn produces stronger plants/earlier flowers but may require extra protection.
- Cuttings – Now is a great time to take cuttings of plants that you wish to have more of, either for yourself or to give away. Semi ripe cuttings can be taken from a range of herbaceous plants and shrubs at this time of the year – such as fuchsias, penstemon, hebes, salvias, lemon verbena etc.
- Saving seed – as plants slow down with their flowering, if you wish to save seed from them, then stop deadheading the flowers to ensure they have time to set seed. On a dry day pick the seed – you can leave them in their seed pods if easier and store in a paper bag in a cool, dry and dark place until you need them – and make sure you label them, easy to forget what they are months later when you come to sow them.
- Harvesting – towards the end of August onwards, I am appreciating more and more what's around us and thinking about harvesting fruits, flowers, foliage, leaves and interesting branches for preserving, enjoying in the house and for squirreling away for crafting including autumnal and Christmas wreaths (eesh I said the C word).

I hope that you enjoy your gardens in whatever form they are and the countryside around us as the seasons change.

Julia Robb

E: juliarobb@hotmail.co.uk. T: 07527 918314

Parish Gardening

SHARED GARDENS SCHEME

Do you have a patch of garden that you don't use any more or is too much work? Would you be interested to share your garden with others? Or would you like to have more space to grow vegetables, fruits and flowers?

Our SG growing plot has really come on in the last month especially and it is such a delight to watch the bees, butterflies and birds flying around and enjoying the space too – in the veg patch the courgettes, squashes and runner beans have rocketed away which is fantastic to see – and also to pick, eat and share. Our tomatoes have been slow to ripen, but I think we're not alone in this.



The archway tunnel is being covered nicely with a variety of plants – including purple french beans, hops, achocha, a small pumpkin 'Jill Be Little', cucamelons and nasturtiums, plus the runner beans have grown to the top of their supports and onto it as well! In the flower patch sweet peas and nicotiana

have done really well, flowering so much I'm struggling to keep up with picking them. Will let some sweet peas go to seed now - want to collect as much as I can for next year's flowers. Dahlias have been a bit slow but coming on nicely now. I have been picking statice and helicrysum regularly and drying at home, using every space I can, ready for future floral projects.



If you would like to know more about the Garden Share Scheme across the parish or would like to get involved I would love to hear from you.

Happy gardening and harvesting!

Julia Robb

E: juliarobb@hotmail.co.uk. T: 07527 918314

Parish Food & Drink

blindmans



brewery



Fresh Craft Ales, Casks, Mini Kegs, Bottles, Cans, Bag in Box
Local & UK Delivery for all occasions

DISCOUNTS AVAILABLE FREE LOCAL DELIVERY OPTIONS

www.blindmansbrewery.co.uk 01749 880038

Blindmans Brewery, Talbot Farm, Leighton, Frome



**RODE GENERAL STORE,
CAFE & POST OFFICE**

More than just stamps

We look forward to welcoming you back to our modern shop & cafe to enjoy a warm welcome, home cooked food, buy local produce and goods.



Monday	09.00 - 17.30
Tuesday	09.00 - 17.30
Wednesday	09.00 - 13.00
Thursday	09.00 - 17.30
Friday	09.00 - 17.30
Saturday	09.00 - 13.00

01373 830321

Open Monday - Saturday

32a High Street, Rode, BA11 6PA



Parish Food & Drink



**FREE LOCAL
DELIVERY**

**07486 059985
11 LOWER ST, RODE**

We are a craft bakery in Rode selling a range of baked goods available for free local delivery or collection every Thurs, Fri & Sat.

Visit our Facebook Page or Website for our menu, with specials announced every Monday based on what's fresh and in season.

Order online or by text or email. 24 hour pre-order is essential.

[07486 059985](tel:07486059985) / joewilkinbakes@gmail.com / thevillagebakingco.co.uk

www.facebook.com/thevillagebakingco



Parish Food & Drink

CHATLEY FARM BROWNIES

NEAR BATH

www.chatleyfarmbrownies.co.uk



Lovingly handmade on the farm
9 Delicious flavours
Delivered by Royal Mail

FREE Gift Wrapping & Gift card
Gluten free options
Local Collection from Norton St Philip

OUR MULTI BUY OFFERS

£8.50

For 1 pack

£8.00

each for 2 or 3
packs

£7.50

each for 4 or
more packs

Follow us on facebook! www.facebook.com/ChatleyFarmBath

Parish Food & Drink

Somerset Foodie

ingredients to inspire

Your local online specialist food retailer

Shop online, we're local and offer FREE same day delivery, straight to your doorstep.

Transform the meals you create at home with our artisan ingredients, you'll find simple and inspiring recipes with 'how to make' videos on our website.

♥ somersefoodie.com



Deliveries are made on our 100% electric van

Our own packed wholefood ingredients are 100% Plastic free

Over 100 Five Star Product Reviews, in the last 6 months



Somerset Foodie Ltd, Church Farm, Rode, BA11 6AA t. 07834 852 561



The Shop

AT CHURCH FARM



READER OFFER

FREE 250ml Rapeseed Bottle* with any Fussels product purchased.

*Bring this ad with you | Expires 30/09/2021

FUSSELS REVAMPED SHOP NOW OPEN

Fussels original cold pressed rapeseed oil, plus inspiring ingredients from around the world.

Opening Hours: Monday to Friday 9am - 5pm | Saturday 10am - 1pm

Church Farm, Parkgate Lane, Rode (Nr. Frome), BA11 6AA | Plenty of on-site parking.

Parish Food & Drink

Cafe & Shop both now open!

We are so happy that our
cafe is now open.



Tables available outside and in our
extension. Full table service.
No booking necessary.
Open inside from 17 May.



Breakfast 9.00 – 11.30
Lunch 12.00 – 3.30
Afternoon Tea until 4.00

*We are still offering our delivery and
collection services from the shop for
those not feeling comfortable visiting us.*



Farleigh Road
FARM SHOP & CAFÉ

Phone 01225 720006
www.farleighroadfarmshop.co.uk



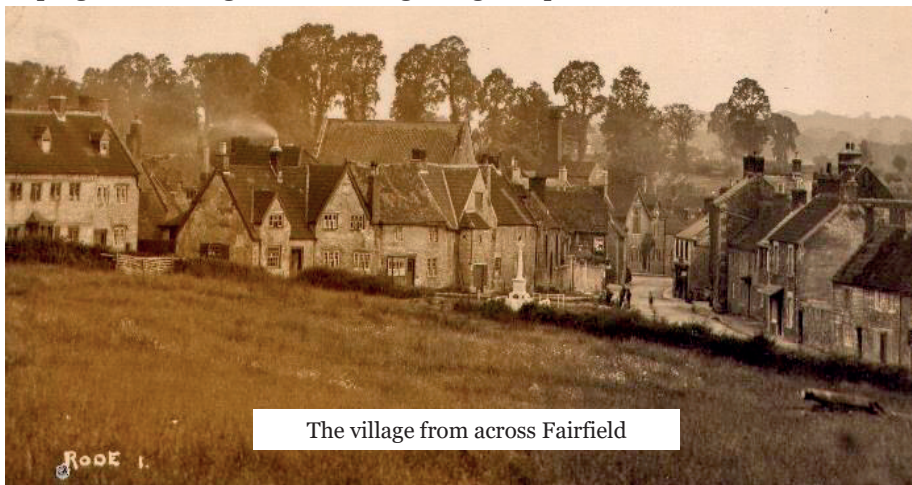
Parish History

THOSE WERE THE DAYS... another of the seven articles originally published in the Link in 1976. This one is about the centre of Rode:

At the turn of the century Rode was more inter-dependant as a village than it is today, and it was only for a special outing or occasion that anyone travelled to Frome or Trowbridge - in fact it was quite common for villagers to live full and happy lives here and die, never having ventured as far as Bath.

In those days a visitor leaving the main road at Woolverton would pass Rode Manor (now the Bird Gardens) hidden in the trees of its lovely park. Approaching the bridge, he would be impressed by all the activity emanating from the Mill - which as well as producing flour, at one time also generated electricity for Rode Manor - and from the house across the bridge (Manners) which was the laundry for the Manor, with stables alongside for the Mill's horses. Heading up Road Hill, morbid curiosity would attract his attention to Road Hill House (Langham House) scene of the then fairly recent child murder, news of which had spread far and wide, and charge or no charge, both culprit and motive were still open to conjecture. Just below Christchurch (on the site of Virginia Cottage) in Langham Place was Road Hill National School (closed in 1916) and at that time the Rector lived next door to his Church (Daubeney House).

Turning into Upper Street (High Street) he would notice the new Victorian facades of the three detached houses on his right (Stacey, Daymond & Noad) and would pass the decorator's window full of paints and wallpapers beyond. There being no houses at all on Fairfield, of course, even in Marsh Road, the sloping field was a gentle scene of grazing sheep and cattle.



The village from across Fairfield

Parish History

Assuming our visitor has picked the right week in September, he will by now be among the crowds attracted to the Pound (Village Green but with railings around it), normally used to hold stray sheep until claimed, but this particular week is Rode's Annual Fete and Sports, and here in the Pound there are coconut shies, sweet stalls, a shooting gallery and all the fun of the fair. Being always a friendly village, our visitor is spotted as a stranger and invited to join a group popping into the White Hart (Tanner) for refreshment: the talk within is of the Athletics in Ten Acre Field, the Cricket at Merfield, and plans for Road Revel Sunday later in the week when everyone will collect outside the factory in Townsend (entrance to the Mead) and march behind the Rode Amateur Brass Band to a Thanksgiving Service at Christchurch.

But our friend must press on, past the Baptist Church, the baker (Craven) and the then Post Office (Hughes). He would, surely take a second look at the Blind House (the blank corner beside Mr. Hughes' paraffin store) so named for its slit cell-like windows, where "drunkards and men of violence" were locked up overnight, and across the road the three fat cats basking in the sun along the row of sweet jars in Hettie Toop's shop window (Squirrel), might well beckon him as they unfailingly beckoned all passing children.

The Cross Keys was then the home of the Fussel family, where Sydney Fussel first started brewing beer as a side-line to his bakery business; this was so popular that his sons soon found themselves delivering to private houses as far away as Swindon and Southampton. Thus, concurrent with the demise of the milling industry in the village, grew up a new business to maintain its livelihood. The Fussels used the Corner House (Gibson) as offices and built on "the point", which later became a barbers shop, next door to which was the fashionable outfitters (Dutru) well-placed alongside the high class boot and shoemakers shop (Greystones), in the large bay window of which was always a magnificent display of hand-made footwear – men's fine hobnail boots at 12/6d per pair, and exquisite ladies soft kid boots, with tiny buttons right up the calf, for the princely sum of 7/6d per pair.

But our visitor is wandering! He must continue past the Methodist Chapel and another grocery shop (Jenkins) with Happerfields Hall (Coulter) behind - nicknamed Ticklebelly Chapel and the venue for dancing classes, whist drives and concerts - until he comes upon the new Methodist Primary School.

Thinking he is on his way out of the village, he crosses over to the George (Wilkinson) for a farewell glass of good cheer only to be told that he has missed Lower Street, so he will have to come back again next month!!

From information contributed by Miss Woolley and Mr. and Mrs. R. G. Fussel

Parish People

PENELOPE SWITHINBANK - THE WYFE OF BATH

Author, counsellor, and grandmother of 6, Penelope Swithinbank, has just walked from Winchester Cathedral to Canterbury Cathedral. The walk of some 150 miles crossed the counties of Hampshire, Surrey and Kent, and took the 68 year old just 13 days, with a rest day off half way there. Backpacking with a 19lbs loaded rucksack isn't everyone's idea of a holiday, but Penelope is no stranger to long distance walking. Just three years ago, to celebrate retirement, she and her husband Kim, 67, walked across southwest France from the Mediterranean to the Atlantic, a journey of 330 miles which took them a month. 'Never come on a walk with me in June,' explains Penelope, who lives in Norton St Philip near Bath. 'Both of these long-distance walks have been in June and both have nearly been rained off – or drowned.'



Penelope began in Winchester on June 15th, and on several days was subjected to torrential rain, heavy winds and unusually cold temperatures. 'But you just keep going,' she said, remembering the mud and floods encountered in France three years ago, when the UK was enjoying a sweltering summer. This year, walking in England, she had two days of hot sunshine at the beginning but then several days of unusually heavy rain. 'Everything was soaked and with only one night at each overnight accommodation, it was hard to get things dry. One kind bnb host actually put the heating on, in June, to try to get me warm and dry!'

The Pilgrims Way has been called England's Camino, and it's the route worn by the feet of mediaeval pilgrims travelling from the shrine of St Swithun in Winchester to that of Thomas Beckett in Canterbury Cathedral. Chaucer's group of Pilgrims in his Canterbury Tales started from The Tabard Inn in Southwark - a resting place built by Winchester Cathedral to make sure they got some revenue even from pilgrims who started in London! It was Henry II who began the route, wracked by guilt at the assassination of Archbishop Beckett in Canterbury Cathedral, and he walked barefoot in 1142. However, the Romans knew the road from Winchester to Canterbury so perhaps it's our oldest National Trail. One of Chaucer's pilgrims is of course The Wyfe of Bath, so that described me well,' laughs Penelope. "My husband was brought up in Hinton Charterhouse and then Dunkerton, and Bath is very much our family home. So I'm happy to be the Wife of Bath although I told no bawdy tales - I walked alone!"

But walking alone also has its problems. 'I was so engrossed in my thoughts I missed a turning on the map,' Penelope remembers. 'I only realised when I'd

Parish People

walked on too far to turn back and was suddenly halted by a hedged field. But there were tractor runs by the hedges and I checked on the map and realised I could head on along a couple of fields and get on to a minor footpath and then back on to the North Downs Way where my path lay. Unfortunately, at the end of those fields, the only way on to the little path was over a tall gate and it was bolted and barred.’ Undaunted, she removed her backpack and waist pack and threw them over the gate, followed by her walking pole and guidebook, to be free to climb over. It was only then that she realised the bars of the gate were too narrow to gain a foothold; there was a lot of barbed wire, and to right and left of the gate was thick undergrowth and more barbed wire. ‘There was no way I could get over or round. I could go back but all my belongings including my phone and guidebook were the other side of the gate. I was totally stuck and feeling not a little worried!’

Penelope is a Chaplain at Bath Abbey and she voiced aloud a simple, ‘help, Lord!’ Having not seen anyone for most of the morning, she was totally surprised to then hear voices approaching and see two couples walking down the little path. They asked if she was all right. ‘I must have been looking very scared or something,’ she laughs now, ‘because they were very concerned and stopped to help me.’ The two strong men eventually worked out a plan to get her over the gate, taking her hands and hauling her up as she half climbed, half dragged herself up with their aid. They then put their arms under her armpits to swing her over the top and down the other side. ‘I am convinced they were angels in disguise, sent to rescue me,’ she explains.

On several days, she was joined by friends or family who walked a day’s journey with her, bringing a packed lunch and good conversation. Following The Pilgrim Way gave a good opportunity to talk about the importance of time out, time to BE and time to build well-being and spiritual health.

‘ It’s a long way to walk, but it becomes the norm, it’s what you do. You get up, don one of the two walking outfits, tie up the boots, and off you go. It’s a simple lifestyle with no time constraints. Yes, there are days when the going is tough – steep hills such as Box Hill or Reigate Hill; floods you have to wade through and then your boots are soaked; no convenient loos on a wet day; and scary moments when you slip or slide on mud or scree. But the good times outweigh them all!’

Penelope arrived in Canterbury Cathedral on June 28th, wet from the rain of course but with a great sense of achievement. She was met by a Chaplain from the Cathedral and they were



Parish People

able to exchange greetings and prayers from their respective churches. That's not the end of activities for this grandmother of six, however. Her third book was recently published. 'Now to plan the next long walk,' she says excitedly.

'I've done the 100 mile Cotswold Way five times now; I've nearly finished the South West Coastal path around Cornwall in weekly expeditions, and I've done a lot of the Via Francigena through Tuscany and Lazio. I'd love to walk from Canterbury to Rome in one long walk though. It's about three months. Would you like to join me?'

Penelope is an experienced pilgrimage and retreat leader, conference speaker and Spiritual Counsellor/Therapist. She has been leading retreats and pilgrimages for nearly 20 years, regularly leads pilgrimages in the UK, such as the Celtic Pilgrimage in Cornwall; and on the Via Francigena in Italy.

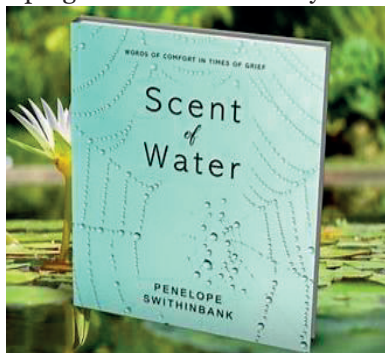
She has had an international ministry, including churches in America and the UK, and speaking on Women's Retreats and leading conferences. Her most special memory is of opening the US Senate in prayer and being guest chaplain. She was the first ordained woman on the staff of The Falls Church, Virginia, where she headed up the Connections and Communications Ministry in a church of nearly 3,000.

Later, she was the first chaplain at St Mellitus College, London, and then ran The Vine at Mays Farm, a Christian Retreat House north of Bath providing sanctuary mostly to burned-out clergy, although normal people came too, for retreats and time out.

She now divides her time between mentoring, supporting and pastoring clergy and others, Chaplaincy at Bath Abbey, leading retreats and writing. Penelope is an avid walker and spends a lot of her time stomping in the hills and valleys near her home.

She is a wife, mother and grandmother and says of the six grandchildren that they are so wonderful she should have had them first.

She is the author of three books, her third, "Scent of Water", a gift book for times of spiritual bewilderment and grief, was published in July 2021. It was preceded by "Women by Design" and "Walking Back to Happiness".



Parish Events

RODE WALKING GROUP SEPTEMBER WALK
10am THURSDAY 2nd SEPTEMBER
See page 27 for details



DEMENTIA FRIENDS INFORMATION SESSION

Where? St Philips and St James Church NSP

When? Monday September 6th 7.00-8.00 PM

How? Book a free place - contact Rev Jo Robinson

T: 01373 831381 E: 321jorobinson@gmail.com



This Information Session, run by a Dementia Friends Champion, will help us all learn how people can live well with dementia. It is a stimulating and interactive session that helps us understand a disease that may affect our family members, our friends or even ourselves.

Everyone is very welcome to attend this session.

A promotional poster for the Rode Comedy Festival. The top half features the title "RODE COMEDY FESTIVAL" in large, white, hand-drawn letters, with the dates "9-12 September 2021" below it. The background shows a night scene with several large, illuminated canvas tents in a field. Below the main title, there is a line of text: "Book your tickets at: www.popupcomedy.org". At the bottom, there are five small images of the festival's lineup, each with a name below it: Mike Wozniak, Stephen K Amos, The Scummy Mummies, Joel Dommett, and Showstopper: The Musical. The text "FOUR NIGHTS OF TOP COMEDY. OPEN AIR. BENEATH CANVAS. IN A BEAUTIFUL FIELD NEAR FROME. LINE-UP INCLUDES:" is written above the lineup images.

Rode Comedy Festival 2021 an exciting series of shows 9-12 September all taking place beneath a stretch tent in a beautiful Somerset field at Pitch Perfect Camping, Woolverton. Tickets are available at www.popupcomedy.org/shows.

Parish Events

**MONTHLY OVER 60'S CLUB
6PM FRIDAY 10TH SEPTEMBER 2.30PM
SEE PAGE 27 FOR DETAILS**

Forget Me Not Café



Come along and connect with others. A friendly place and a listening ear.

We look forward to seeing you.

Venue: Norton St Philip Church
11.00am – 12.30pm

Dates: Sep 13/Oct 11/Nov 15/Dec 13
The Café team have all undergone dementia friendly training

THE RETURN OF RODE AND DISTRICT GARDENING CLUB

7.30pm Monday 13th September
See page 28 for details

RODE LADIES GROUP ANOTHER MONTHLY GROUP RETURNS!

**WEDS 22ND SEPTEMBER
SEE PAGE 28 FOR DETAILS**

COMMUNITY VOLUNTEER ACTION

RODE HOEDOWN DAY

SUNDAY 26TH SEPTEMBER @2PM

COME JOIN TEAM RODE ON HOEDOWN DAY

We're a growing group of volunteers willing to give a few hours a month to help look after our village. This could be weeding, planting flowers, sweeping a pavement or picking up litter along a country lane.

TO FIND OUT MORE GET IN TOUCH WITH

MIKE SALMON 07818 097030
ELAINE BUTLER 07716 248825
ELAINEDBUTLER@ICLOUD.COM

REFRESHMENTS AFTERWARDS ON THE VILLAGE GREEN

Parish Events

**MONTHLY LUNCH CLUB
RETURNS 12.30PM
MONDAY 4TH OCTOBER
SEE PAGE 29 FOR INFO**

**Scouts Fundraiser
Silent Auction & Cream Teas
2-4pm at Rode Village Hall
on Sunday 31st October 2021
See page 9 for details**



**SAVE THE DATE
SUNDAY 14TH NOVEMBER
RODE REMEMBRANCE SUNDAY PARADE
DETAILS TBC**



**Rode Chapel
Christmas Bazaar**

**Saturday 20th November
(All being well!!)
10am – 2:30pm**

**Buy your Christmas gifts locally
from local people.**

****Bill's Bacon Buns**

****Raffle**Honey**Cards**Crafty Craft Work**

****Jewellery**Cakes** Lots more! Entry £1**

Contact 830411 for stall information

**Save the date
Saturday 29th January
2022 "Bangers and Bingo"
Scouts fundraiser is back!
Full details TBC.**



Bangers & Mash Evening

Noticeboard



ILLYRIA

Much Ado About Nothing
BY WILLIAM SHAKESPEARE

HEYWOOD HOUSE, BA13 4NA
**Sunday 5th September 2021 at 3pm Tickets: Illyria.co.uk,
theelizabethanplayhouse.com 01373 832 113**

Gates open: 2pm. Performance approx. 2hrs 10mins (inc 20min interval).
Cancellation in the event of dangerous weather only, when performance will be rescheduled. Tickets are non-refundable, except for cancellations due to Covid-19 government mandates. Booking fees may apply. Please bring your own seating/rug, warm clothes. Licensed Bar, Cream Teas and Refreshments available.



FROME
AGRICULTURAL & CHEESE SHOW
SAT. 11 SEPTEMBER 2021

**FROME CHEESE SHOW IS BACK!!
IF YOU'VE NOT BEEN BEFORE VISIT
www.fromecheeseshow.co.uk/theshow/whatson/
AND FIND OUT ALL ABOUT IT....**

garston VETERINARY GROUP

Frome Agricultural and Cheese Show Fun Dog Show

In association with:



Saturday 11th September 2021

Registration at the Garston Vets trade stand
(113 - opposite the dog show ring) from 9am on show day

9-10am: Positive connections scent work demo

Pet dogs can do scent work too. Come and watch a searching demo to see how it's done.

10-11am: Gun dog demo

Watch our gun dogs in action and see how training can be achieved through positive reinforcement techniques.

11-12pm: 'Have a go' Hoopers and demo

Watch how Hoopers works with our demo and then have a go yourselves on a Hoopers course. Any age and breed welcome.

2-3pm: Rally and k9 activities demo

Watch our groups demonstrate an array of tricks, obedience and fun exercises.

4-5pm: 'Have a go' lure chase

Let your pooch have a go at chasing the lure around the luring course. The faster the better! Must be over 1 year. All breeds welcome.

Fundraising in aid of



All money raised
will be donated to
why... we hear you

Dog show class 1

12-12.30pm: Prettiest lady

Enter your prettiest girls. Any age and breed welcome.

Dog show class 2

12.30-1pm: Most handsome gentleman

Enter your handsome lads. Any age and breed welcome.

Dog show class 3

1-1.30pm: Most charismatic puppy (under 1 year)

Enter your gorgeous puppies. Any breed welcome must be under 1 year of age.

Dog show class 4

1.30-2pm: dog's got talent (best trick)

Enter your pooch and show us their best tricks. Any age and breed welcome.

Dog show class 5

3.00-3.30: Temptation alley

Can your dog navigate the temptation course? We're looking for maximum self-control! Any age and breed welcome.

Dog show class 6

3.30-4.00pm: Friendliest dog

Enter your friendly doggo's to meet our judge with a chance to win! Any age and breed welcome.

For all Classes: £2.50 per entry. Every entrant receives a rosette with a prize for 1st place.



Noticeboard



Join us this September for The Great Big Green Week which will see a host of events celebrating how the Frome community is taking action to tackle climate change and protect our green spaces.

This November the UK is hosting a major UN climate summit, known as COP26, where politicians will set out how they plan to fulfil their promise of reducing greenhouse gases across the world. In the run up to this, The Great Big Green Week will set the stage for the most ambitious climate summit ever.

A nationwide event, The Great Big Green Week provides the perfect opportunity to show decision makers that people from all walks of life are stepping up to take action on climate change – and we need them to step up too.

As part of the week we're inviting local residents to create art, poetry and stories to deliver Frome's message to the leaders of COP26. Tell us why you love our green spaces, our planet, and the action you want to see from our leaders to protect it. Please bring your creations to Frome Town Hall where they will be displayed throughout Great Big Green Week.

In Frome, we'll be celebrating The Great Big Green Week with a wide range of events taking place between 18th – 26th September.

You can view and download the programme at: frometowncouncil.gov.uk/wp-content/uploads/2021/08/Great-Big-Green-Week-2021-programme.pdf and please check back every now and then for any late additions!

Please note that some events are ticketed will need to be booked in advance.

Parish Council Meeting Minutes

MINUTES OF MEETING OF RODE PARISH COUNCIL HELD IN
RODE MEMORIAL HALL
ON MONDAY 11TH AUGUST 2021 AT 7.30 pm

UNCONFIRMED

Present:

Cllr Mike Salmon - Chair (MS), Cllr Peter Travis (PT), Cllr Ann Edney (AE),
Cllr Pat Restorick (PR), Cllr Jim McAuliffe (JM), Cllr Andy Pickett (AP),
Cllr Elaine Butler (EB)

In attendance: Hugh Williams – Clerk, and 5 members of the public

1. Public Participation:

Concern was expressed that the Parish Council (PC) was not taking the appeal against the rejection of the planning application to build 29 houses on the Merfield/Mead land with enough urgency and was not alerting the village to the appeal. The Chair said that the PC was consulting with DLA Piper on the best way to respond to the appeal and to determine which points should be focused on. All of the parishioner objections have been sent to The Planning Inspectorate and Mendip themselves will be pursuing its decision to reject the application especially if overturned Mendip will be liable for costs.

Further comment was made that following the impact of Covid a number of businesses had closed which had freed-up many buildings within towns which could be converted to housing, which should be prioritised over this development. It was also important that mention should be made of the mental health and wellbeing impact this proposed development was and would have. It was agreed to bring this item forward on the agenda to enable parishioners to participate in it.

2. Apologies for absence: Cllr Steve Eyles, Cllr B Lund and Cllr L Oliver

3. Approval of the minutes: The minutes of the Parish Council meeting held on 12th July were approved.

4. Declarations of interest: None.

6. Report from County Councillor: The decision over the future make-up of Somerset had been made and there would be a single Unitary Authority replacing the current Council and the 4 District Authorities.

Parish Council Meeting Minutes

6. Report from District Councillor: SWP had had to suspend garden waste collections from the beginning of August for six weeks due to driver shortages.

7. Planning matters

i) Appeal of 2020/1686/OTS

Ashford Homes had lodged an appeal against the rejection by Mendip of this planning application on four grounds: setting of the site and heritage; drainage; trees, and issues relating to open spaces, travel, footpaths etc. The advice received from DLA Piper was that the PC should focus on the heritage issues along with its location. The advice was that the drainage and tree issues were probably very technical and could be argued by experts. The report from the Inspector following the Hearings last November/December was still awaited and if he endorsed the removal of RD1 (Merfield/Mead) from the Local Plan Part 2 this would add weight to the PC case.

It was agreed that heritage was the key issue and that it would be difficult to get an expert to site and prepare a report for the PC before the deadline of 31st August; however, CPRE and Heritage England would be approached as they had initially objected. JM reported he had contacted CPRE and they were aware of the appeal.

The PC would check whether only the four points raised by Ashford Homes should be focused on or whether other issues could be raised again. There had been a similar case involving Chilcompton where the Planning Inspectorate had come down against the appeal by the developer and it was agreed this should be used in the PC case. The issue of the climate change impact related to transport arising from this development should be raised. Additionally, the Government's policy of giving priority to development in towns and cities not being in line with this proposal, especially following changes in lifestyle following Covid19.

The Clerk agreed to see if an extension could be given to the appeal as not all those who had commented had received notice of the appeal (Clerk's note: Mendip are not in a position to grant an extension and The Planning Inspectorate has been approached and have agreed to extend deadline to **14th September**).

It was agreed that a PC paper challenging the appeal would be prepared and submitted to The Planning Inspectorate and this would be copied to Mendip and Cllr Lund.

ii. Mendip decisions:

2021/1212/VCR: Application to vary condition of planning permission 2018/2015/VCR to allow for variation of some elements of approved boundary materials – 3 Frome Road. Approved with conditions.

Parish Council Meeting Minutes

2021/1295/HSE: Erection of free-standing carport and formation of associated access – 41A Church Lane. Approved with conditions.

2021/1402/HSE: Installation of garage door to carport – 6 St Lawrence Lane. Approved with conditions.

2021/0415/HSE: Erection of second storey extension above existing single storey side extension – 3 Walnut Close. Approved with conditions.

8. Church Farm access to village/footpaths and playing field: The path from the site to the playing field had not started and further emails on this issue had been exchanged with Autograph Homes still without any path starting. It was agreed that Mendip would be informed that Autograph still had not installed a path as agreed under the S106 agreement. (Autograph would be copied in).

Nigel Clarke (Chair of Playing Field Committee) joined the meeting and he reported concerns he had over the Trustees remaining quorate – they required 7 members (2 of which are PC members). If the Committee could not recruit additional members there was a possibility it could fold and all responsibility return to the Parish Council. It was proposed an effort to recruit members would be made at the Village Day to be held on the playing field on 30th August. The Clerk had a Declaration of Trust which covered the new S106 land and he agreed to send a copy to Nigel Clarke.

9. Highways:

- i) AP had submitted the Traffic Consultant's report challenging SCC's highways assessment on the Barbara's Field development to SCC, he agreed to forward it to Mendip and to chase SCC for acknowledgement.
- ii) MS reported he had emailed Sara Davis to let her know the PC was in agreement over the 20mph zone, the village gate signs and the proposed measures on Rode Hill; however, he had not had any acknowledgement.
- iii) The Clerk reported that Cllr Oliver had pursued SCC over the adoption of The Sportsman and a reply had been received. The PC was concerned that SCC indicated that water run-off from adjacent land was not their or Wessex Water's concern and it remained unclear if SCC would adopt The Sportsman even though there was a bond in place.
- iv) The Clerk was seeking quotes to repair the fingerpost on Straight Lane as the PC agreed a proper cast iron finger should be sourced. It was reported the finger had been broken off around 20 years ago.

10. Actions from the previous meeting:

Parish Council Meeting Minutes

- i) **Hoedown:** The last one had not been so well attended and it was agreed to fund the distribution of flyers to the village to encourage more participation and awareness.
- ii) **The Bell:** Contact had been made with the managing agents but they said they needed to contact the owners of The Bell, a response was still awaited.
- iii) **Jubilee Clock:** David Hornsey had arranged for repairs to be carried out by Peter Watkinson and these had been carried out the previous week. There was agreement that further ongoing maintenance should be put in place. Thanks were given to David Hornsey for arranging the repairs.
- iv) **The Mead/Clay Lane:** A report of the condition of the trees on The Mead was still outstanding, once received the owners would be contacted. The Clerk reported that Andy Fussell had agreed to fell the dead trees adjacent to Clay Lane when his crop was harvested in mid-October.
- v) **Marsh Road:** An onsite meeting with Somerset County Council had been agreed for 17 August.
- vi) **Dog bin foot of Marsh Road:** A request to move this bin onto the village green had been received. It was agreed this was not practical and would destroy the appearance of the green.
- vii) **Doctors Practice:** The response from Beckington Practice had been received and was noted.
- viii) **Waste off A361:** Complaints had been received over the waste being dumped at a site on the A361, however as this was on someone's own land the PC could not do anything about it.

11. Climate Emergency: As part of the efforts to combat the climate emergency JM had proposed the PC promote a 'no mow May' and consider if areas the PC was responsible for also be left un-mowed. It was agreed that Julia Robb be consulted on possible returning a couple of areas to wild flower zones. A presentation on Extinction Rebellion was planned for the 19th August in the Memorial Hall and this event would be used to try and recruit more people to join the Climate Change Working Group and also to generate ideas of what could be realistically done by Rode.

12. Calm Engineering and drainage: It was agreed a date for a presentation of what Calm Engineering had done and were planning to do would be arranged.

13. Parish Council website: The village website (rodevillage.com) has been amended to include a Parish Council section with the direct link being: www.rodevillage.com/parish-council/ The Clerk had access to update this site.

Parish Council Meeting Minutes

14. Unitary Authority/Frome: The Chair reported that he had received a spreadsheet from Frome which had been sent to all parishes in the Frome area. He had completed this indicating what the PC was responsible for. The next step was for all parishes to complete.

15. Conservation Area/Neighbourhood Plan: AP reported he had approached Mendip over these issues. Mendip had said the current Neighbourhood plan was still current and had authority for planning applications but emphasised that any changes to the Rode Neighbourhood Plan would need to concentrate on the character assessment of the area, with a need to define additional character. To create an expanded conservation area that covered the whole village and protected it would need to identify more characteristic buildings. It would probably be a longer and more difficult process to create a conservation area. A conservation area would not come under planning but conservation within the district council. To revise the Neighbourhood Plan would probably require the village to identify areas where development could take place which could be difficult to get agreement on, but improved plans could define a red line encompassing the village where development is not favoured.

It was agreed to do these would involve a lot of work and the PC would need to seek expert help. It was agreed that initially a timeline should be drawn up outlining what would be required and when.

16. Bus services: PT reported that he had submitted a document for Rode, with the help of members of the PC, as the first step in improving bus services across the county.

17. Financial matters: The following payments were agreed:

Eagle Grounds Maintenance	£725.12
Clerk salary	£220.62
HMRC PAYE	£55.20
SALC (training)	£30.00

18. Date of Next Meeting:

The next meeting will be held in the main hall of the Memorial Hall at: **7.30pm on Monday 6th September.** Please note the change of day for the meeting.

The Meeting closed at 10.45 pm.

Website: rodevillage.com/parish-council/

...and finally

WHERE IN HARDINGTON VALE?

Where, near Hardington Vale, would you see this view? Did you recognise the garden in last month's photograph? It was the Chapel Garden in Rode. If you have a photograph of a part of Hardington Vale that you would like us to feature, email it to link@rodevillage.com.



Sudoku

2	4				3		5	8
6			5			3		7
	3	5				9		
8				7				9
			3	8	1			
	2			6				5
		6				7	1	
9		2			7			6
4	7		6				8	2

Last month's Sudoku

3	9	1	8	7	6	2	5	4
5	7	6	4	1	2	9	8	3
8	2	4	3	9	5	7	1	6
1	4	9	5	3	8	6	2	7
6	5	3	7	2	9	1	4	8
2	8	7	1	6	4	5	3	9
4	1	8	6	5	7	3	9	2
9	6	5	2	8	3	4	7	1
7	3	2	9	4	1	8	6	5

POEM OF THE MONTH

When the goldenrod is yellow,
 And leaves are turning brown
 Reluctantly the summer goes
 In a cloud of thistledown.
 When squirrels are harvesting
 And birds in flight appear -
 By these autumn signs we know
 September days are here.

Beverly Ashour,
 'September'



Jennie Gilbert Pottery Courses Wiltshire & France

4 St. Martin's Workshops, Manor Farm, Fifield Bavant, Broadchalke, SP5 5HT

We run several courses in the Chalke valley and the Lot in South West France.

Choose from 2 or 4 day courses in Spring and Autumn.

Look at my website for details, dates and prices

Or pop in to the workshop for a chat.

01722 780402

jennie.gilbert@yahoo.co.uk

www.jenniegilbert.co.uk



Bewley Funeral Directors

Our family are here for your family



3rd generation family business since 1970 providing Simple to fully Bespoke Funerals. Our friendly team offer home visits helping you and your family with all necessary support and guidance.

For 24 hour service call 01225 353525

Manvers Street Trowbridge www.bewleyfunerals.com

Flourish Yoga

Hatha Yoga with Selina Ratcliffe

Every Wednesday starting

Wednesday 2nd June 2021

10.00am - 11.00am

Rode Village Hall

Please email me to book your mat space in advance or if you have any questions
flourish@selinaratcliffe.com

£10pp

"Selina is a caring, kind, positive and enthusiastic yoga teacher who supports everyone in her yoga class whatever their age and ability." ~ Jess, Bristol

www.selinaratcliffe.com | fb: Yoga with Selina Ratcliffe

MATTHEW'S MOWING & MORE

MOWING, STRIMMING,
GARDEN CLEARANCE,
AND MORE!

ALL JOBS CONSIDERED,
COMPETITIVE RATES,
PUBLIC LIABILITY
INSURANCE COVERED.

MOBILE :
07972344720

PROPERTY & BUILDING MAINTENANCE

M Stock

01373 672090

or 07801 355384

I can give you a free estimate &
I have over 30 years experience

Painting inside & out
and general decorating

Path laying, wall & patio building

Brick & Stonework

Re-pointing work

Roofing

Fencing: Chain link, wooden or panel

Garden Maintenance

£5 million public liability insurance

GREEN MAN



**Professional
Eco-friendly
Carpet,
Rug, Hard Floor,
& Upholstery
Cleaning**



FROME: 01373 470416

www.greenmancleaning.co.uk



ELECTEC



electrical and technical services

- Domestic and commercial work
- Local electrician
- Homeowner electrical installation condition reports for home or rental (EICR)
- Rewire, upgrade or bespoke
- Maintenance, adapt or fix
- A company that strives to corroborate



E jeremy@electec.co.uk **T** 07834 830591 **C** www.electec.co.uk

Sharon's Foot Clinic



**S.A.C Dip FHPT S.A.C Dip FHPP
Fully Insured and Highly Trained**

For The Professional Treatment Of:

**Corns • Callus • Cracked Heels • Athletes Foot
Fungal Infections • Thickened Nails • In growing Nails
Diabetic Foot Care • Verrucas • Nail Cutting • Nail Reconstruction**

Contact **Sharon** on **01373 836734** or **07728 200402**

Clinic Appointments at 12 Sunny Hill Nunney BA11 4ND

Home Visits also Available.

GARAGE DOOR & PRE-FABRICATED BUILDING SPECIALISTS

WE'LL RECOMMEND A SOLUTION THAT SUITS YOU, NOT US

That means we listen to your **needs**, take on board your **wants** and, very importantly, take into account your **budget**. We can then advise you on the best way to go; whether that be a complete bespoke garage, top of the range automated door, a basic up and over or simply a repair.

So with direct access to the top manufacturers, a huge stock of spare parts for all makes and our own teams of experienced engineers, you can be assured of the result you want.

Trading Standards Approved Trader



SDS
Secure Door Services

Call Debbie or Nicola on **01373 580298**
Showroom: Radstock Rd, Midsomer Norton, BA3 2AD
www.sdsgaragedoors.co.uk



For details of our pre-fab buildings please visit: www.sdsconcretegarages.co.uk



Do you need a
Plumber? Call



**PAUL ANTELL
PLUMBING**

**07890 366832
01373 467427**

Professional, Reliable, Friendly & Local
paulantellplumbing@talktalk.net
www.paulantellplumbing.co.uk

Wash'd Up Crocks

Whatever your event,
large or small, I can supply

**Crockery, Cutlery, Glassware,
Linen and Vintage Crockery**

With reasonable rates
and **NO** washing up - it pays to hire
Delivery/Collection service available

For a quotation contact Helen Shorten
Office - 01373 830141
Mobile - 07746410401
Email - info@washedupcrocks.co.uk
www.washedupcrocks.co.uk

Coffee with an Architect?

Thinking about a project?

An Architect with over 20 years' experience and a genuine love of historic buildings and coffee, I would be happy to meet and discuss your plans and ideas.

For a free initial chat please contact:

Anna Hammond BA DipArch MSc ARB
e: annahammond@ymail.com
m: 0772 941 1360 t: 01373 834439





24/7 Personal service from a family of Independent Funeral Directors

Proud to have served our community for over 20 years

Golden Leaves Guaranteed Plans available

Cote House, 51 Timbrell Street, Trowbridge, BA14 8PN Telephone 01225 775259

16 Warminster Road, Westbury, BA13 3PB Telephone 01373 864944

www.elizabethsnell.co.uk

info@elizabethsnell.co.uk

BECKINGTON PHYSIOTHERAPY PRACTICE

**Has relocated, come and see us at our new address:
Shawford Farm (A36), Beckington, BA11 6SQ**

Keep active with Physiotherapy

Lesley Fussell MCSP, SRP, AACP

With over 30 years of experience specialising in treatment
of muscle and joint problems including:
Back and neck pain - Work and posture related disorders -
Sports injuries - Arthritic conditions -
Joint & muscle problems following accidents and surgery. -

Home visits can be arranged.

Telephone: 01373 831483

Email: lfussellphysio@gmail.com

Handyman Services

home & garden maintenance

for all your home improvements
and repairs inside and out.
decorating~carpentry~plumbing
tiling~flat pack~gardening~ponds
decking~sheds~fencing and more.

call Gary.

07747 771016

01373 859930

handyman-services-gary@outlook.com

PHYSIOTHERAPY & ACUPUNCTURE in Rode

Merete Bates MCSP, SRP

Japonica Clinic
The High Street

07734058025

www.japonicaclinic.com

info@japonicaclinic.com



SEYMOURS COURT

**Bed & Breakfast and
Wedding Reception
Venue in Beckington**

**A marquee venue for
your special day
or stay with us in our
luxury accommodation**

Contact:

01373 830466

or 07712 580586

info@seymourscourt.co.uk

www.seymourscourt.co.uk

Village Window Valet



*Are you looking for a
window cleaner?*

*Call Adam for a
fast & reliable quote*

☎ 01373 830877

☎ 07801 151207

✉ dumbcara@hotmail.com

Adam Figiel, 2 Green Park, Church Lane, Rode, Nr Bath Somerset

**WINDOW, CONSERVATORY, FASCIA
& GUTTER CLEANING SERVICES**



FROME AREA BUILDING SUPPLIES LTD

01373 831550 www.fromeareabuildingsupplies.com

A truly independent supplier of building and DIY materials for any project around the home or for any building projects

Stocking over 3000 products... Timber, Plumbing, Drainage, Landscaping, Construction, Electrical, Decorating and much, much more

Located just outside Rode off the A361

We offer a free delivery service in the local area

Come and pay us a visit or take a look at our website featuring many of our products



FROME AREA BUILDING SUPPLIES LTD

01373 831550 www.fromeareabuildingsupplies.com

LEOZAMP & CO

1 LANGHAM PLACE, RODE

T: 01373 830233

**For all your electrical requirements.
Rewiring, Repairs, Sales & Public Address,
Intruder Alarm Systems.**



**For domestic appliance repairs call:
Domesticare 01373 467351**

Brian Brewer

Carpet & Upholstery Cleaning Specialist

Est. 2002

Carpets

Rugs

Sofa's

Mattresses

Commercial & Domestic

Spot Cleaning

Stain Removal

Stain Protection

Flea Treatments

Fully Insured



26 Grove Mead, Frome, Somerset BA11 4BU

Tel: 01373 300642 | Mobile: 07866 433365


Email: brewer.brewer54@gmail.com



Beckington Motors
Keeping you *on the road* since 1960



- Local friendly garage
- Air conditioning
- MOTs and servicing
- Tyres, batteries and exhausts
- Vehicle diagnostics
-  Specialist Land Rover diagnostics
- 4 wheel laser alignment
- Range of courtesy cars
- Recovery service
- Fully qualified technicians
-  Calor Gas supplier

Bath Road, Beckington BA11 6SW | 01373 830238 | www.beckingtonmotors.co.uk
Opening hours: Mon-Fri 8am-5:30pm, Sat 8:30am-12:30pm |  Find us on Facebook



Art Classes in Rode at Jan's Kitchen Table
– tuition for catching the imagination

At Jan's Kitchen Table the tailor-made tuition is all about you, your individuality, discovering your imagination and having fun

Be inspired to paint, draw and illustrate with professional artist and illustrator Jan Nesbitt (BA Hons in Fine Art and a wealth of experience!)

Mondays and Tuesdays 10am to 1pm £16 per session
– discounts for advance bookings
Friday evenings 7pm to 9pm £10 per session
Tel: 01373 830941 email: jan@jannesbittartwork.com
www.jannesbittartwork.com

HOLISTIC TREATMENTS

Available in the centre of Rode

Massage • Organic Facials •
Bach Flower Therapy •
Ear Candling



Celia Stewart
07761-016521
massage.bach@gmail.com
www.bathholistic.co.uk

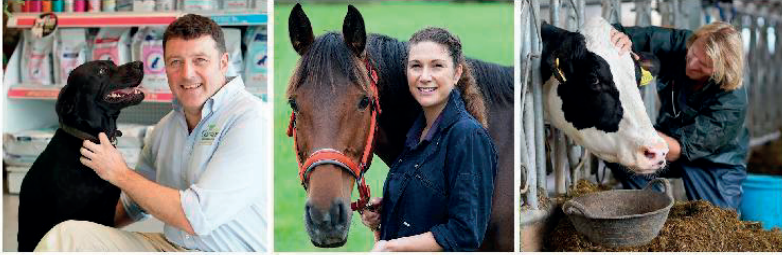


**House
proud**
of Rode

Home Improvements
For all those jobs that make a house a home

- Carpentry, cabinet making, shelving, wooden flooring
- Furniture Restoration
- Interior/Exterior Decorating
- Bathrooms & Kitchens
- Gardens – patios & decking
- General Maintenance & DIY

Contact David Griffiths
Mobile 07732 280940
Home 01373 830366



Not all veterinary practices are the same
 We are available to care for your pets, horses and animals 24/7
 If your pet is overnight with us, they are never left alone
 Garston vets - a truly independent approach
 to animal care for over 100 years.



Frome 01373 452225	Melksham 01225 617779	Trowbridge 01225 754021	Warminster 01985 213350	Westbury 01373 301448
-----------------------	--------------------------	----------------------------	----------------------------	--------------------------



www.garstonvets.co.uk



Loose covers and curtains

Individually made to
suit your requirements

Free estimates

Sue Hocking
01225 865706
email:
sue.hocking@talktalk.net



CARPENTER AND JOINER
Martin Hale

Professional Carpentry Services
 Custom Made Joinery
 All Interior & exterior work
 Renovation & Maintenance
 Period properties a pleasure

City & Guilds Qualified

Quality service, free estimates

North Bradley
01225 762495
Mobile: 07768 838757
Email: Martin.hale27@gmail.com

CALLING ALL LINK READERS

PLEASE SPREAD THE WORD!

WE WOULD WELCOME -

New Team Members

New Contributors

New Advertisers

New Readers - Copies On

Sale @ Rode P.O.



Registered Member of The British
Association of Foot Health Professionals

Foot Health Professional
Kirsten Penny MCFHP MAFHP

Home Visiting Practice

Corns • Hardskin • Thick Nails
• Ingrowing Toenails
and much more

Why Suffer?

Call 07761 180819
for an appointment
(Frome and surrounding areas)

For all your Foot Care Needs

THOMAS & ELLIS

Chartered Certified Accountants

A local family practice helping businesses
and individuals for over 30 years

Contact Jo Ellis on:

01225 862259 or joanna@thomasandellis.co.uk

ACCA

www.thomasandellis.co.uk

**EXPERIENCED
LOCAL
HANDYMAN
NO JOB TOO SMALL
SHELVING, SHUTTERS,
FLOORING, WINDOWS
AND DOORS REPAIRED OR
PURPOSE MADE. FLAT
PACKS ASSEMBLED.**

Call Peter Stratford on
01373 831260 or
07870 453597

Woodland Carpentry

- * Fitted Kitchens
- * Worktops
- * Bedroom Furniture
- * Stud Partitions
- * Door Linings
- * Doors Hung
- * Skirting Boards

And much more, just ask

Call Kevin Page

**On
07944 109397**



Downlands Tree Surgery

Expert Tree Care

- Skilled Pruning
- Precision Tree Removal
- Tree Stump Removal
- Qualified & Insured
- Scrub Clearance
- Immaculate Clear Up

For tree advice and a prompt quotation
Telephone Jon Burgess

01985 841057

Need help keeping up with today's digital world ? Fed up with feeling frustrated, baffled or confused ?

"Kathryn has been supporting people and their tech gadgets for years, understanding the frustrations and confusion these can cause. Her skills in IT enable her to clearly explain and implement tech in everyday life to make things easier, for business and personal use or just fun.

Keeping in touch with how things change but always keeping it real and relevant."



Get confident and competent at using your tech with:

- one-to-one customized tuition
- expert technical support
- friendly affordable advice
- helpful purchasing guidance

Kathryn Price 07427 104249
kathryn@kspstechcare.co.uk



KSP
TechCare

GIFT certificates available

£25 per hour support
(valid for 6 months)

Find out how YOUR tech can make life easier for YOU ...



PLANS FOR EXTENSIONS

- Plans prepared for Planning Listed Building and Building Regulation applications
- We have over 35 years experience and are able to give good professional advice

For free initial consultation please contact:

IAN SING

MRICS MASl MClOB MClAT

 ian@larner-sing.com
 01373 830836 / 07783345541

Martin's Chimney Services



Professionally trained to sweep all types of chimneys and appliances

Fully insured, offering a tidy, clean and efficient service



Bird guards supplied and fitted

Insurance approved certificates issued

NACS Member

Tel: 01225 768969 / 07909 078500

Email: martinschimney@hotmail.com

www.martinschimneyservices.co.uk

HomeworksDesign

www.homeworksdesign.co.uk

07768020204



Planning applications
Extensions, kitchens, garden cabins, lofts
Design & Build



Botox and Injectables, Rode

Private clinic in Rode offering Botox and facial fillers. All procedures carried out by Dr Abby Burgess, an experienced NHS GP. Personal service of creating a fresh, more youthful, look.

Contact Dr Burgess for an initial appointment to discuss your needs.

Email monkleyaesthetics@gmail.com

Website www.monkleyaesthetics.co.uk

Tel/Text 07891 057074



Find Monkley Aesthetics on Instagram and Facebook



Live & Zoom Yoga classes with Stephanie
- Rode's Yoga Teacher.

Choose to attend in person at Rode
Memorial Hall (£9/class) or in the comfort
of your own home via Zoom (£8/class)

Every Tuesday 7.30pm & Friday 9.30am
Plus get a video recording of the class sent
direct to your inbox each week so you can
practice as often as you like, at a time that
suits you!

FIRST CLASS FREE FOR NEWBIES!

Contact:

yogawithstephanieharrison@gmail.com
07780 601 381

Experienced teacher

Friendly and down to earth classes

All levels welcome & Mats provided

www.facebook.com/yogawithstephanieharrison

Pelican Plumbing



Trusted and reliable local
plumber. For bathroom
installations, leaks, new taps,
toilets and plumbing
maintenance covering Bath
and surrounding villages.
call Simon Preston.

01373834991 or 07982051869
simon@pelicanplumbing.co.uk

Nashblend Limited trading as:

West Country Tiling Company

Pitched Roofing, Lead Work, Timber Treatment.

Conservation work is our speciality.

Tel: 01373 462224

S. A. M. SCAFFOLD

Safety and Maintenance Scaffold,

We can meet all your scaffold requirements.

Tel: 01373 461511

Hardington Vale Church Services – SEPTEMBER 2021

DATE	TIME	SERVICE	LEADER
Sunday 5 September	9.00 am 10.30 am 11.00 am 6.00 pm	Norton St Philip , Informal Breakfast Rode St Lawrence , Holy Communion Laverton , Holy Communion Rode Chapel , Meeting Place	A & S Filkins S Kivett J Robinson
Monday 6 September	9.00 am	Norton St Philip , Morning Prayer	
Tuesday 7 September	5.00 pm	Laverton , Evening Prayer	
Wednesday 8 September	8.30 am 6.00 pm	Hemington , Morning Prayer Rode Chapel , Informal Prayer	
Thursday 9 September	6.00 pm	Norton St Philip , Silent Prayer	
Sunday 12 September	9.00 am 10.30 am 11.00 am	Tellisford , Matins Norton St Philip , Holy Communion Laverton , Matins	J Robinson/M Harrison R Hill
Monday 13 September	9.00 am	Norton St Philip , Morning Prayer	
Tuesday 14 September	6.00 pm	Tellisford , Evening Prayer	
Wednesday 15 September	8.30 am 6.00 pm	Hemington , Morning Prayer Rode Chapel , Informal Prayer	
Thursday 16 September	6.00 pm	Norton St Philip , Silent Prayer	
Sunday 19 September	9.00 am 9.00 am 10.30 am 10.30 am 11.00 am	Norton St Philip , Mini Breakfast Church Farleigh Hungerford , Morning Worship Rode St Lawrence , Holy Communion Norton St Philip , Informal Worship Laverton , Matins	S Rodford J Robinson/B Day J Robinson/B Day F & R Stewart J Naismith
Monday 20 September	9.00 am	Norton St Philip , Morning Prayer	
Tuesday 21 September	5.00 pm	Laverton , Evening Prayer	
Wednesday 22 September	8.30 am 6.00 pm	Hemington , Morning Prayer Rode Chapel , Informal Prayer	
Thursday 23 September	6.00 pm	Norton St Philip , Silent Prayer	
Sunday 26 September	9.00 am 10.30 am 11.00 am	Tellisford , Holy Communion Norton St Philip , Holy Communion Laverton , Matins	C Walker/J Robinson C Walker/J Robinson P Simper
Monday 27 September	9.00 am	Norton St Philip , Morning Prayer	
Tuesday 28 September	6.00 pm	Tellisford , Evening Prayer	
Wednesday 29 September	8.30 am 6.00 pm	Hemington , Morning Prayer Rode Chapel , Informal Prayer	
Thursday 30 September	6.00 pm	Norton St Philip , Silent Prayer	

SEPTEMBER 2021 DIARY	
Thu 2 Sep	10am Rode Walking Group see page 27 for details
Mon 6 Sep	11.25am-12.05pm Mobile Library, Memorial Hall 7-8pm Dementia Friends see page 45 7.30pm Rode PC Monthly Meeting, Main Hall, Rode Memorial Hall
Tue & Sep	Giant Sunflower Competition deadline see page 8
Fri 10 Sep	6pm Over 60s see page 27 for details
Mon 13 Sep	11am-12.30pm Forgot Me Not Café see page 46 for details 7.30pm Rode & District Gardening Club see page 28
Wed 22 Sep	OCTOBER LINK COPY DEADLINE 2.30pm Rode Ladies Group is back!! See page 28
Sun 26 Sep	2pm Rode Hoedown see page 46
Thu 30 Sep	RPF Lottery Draw The Cross Keys see page 11
YEAR PLANNER	
Mon 4 Oct	12.30pm Monday Lunch Club is back!! See page 29
Sun 31 Oct	2am British Summertime ends clocks go back 1 hour 2-3pm Silent Auction & Cream Teas Scouts Fundraiser see page 9
Sun 14 Nov	Remembrance Sunday
Sat 20 Nov	10am-2.30pm Rode Chapel Christmas Bazaar see page 47 for details
Sat 25 Dec	Christmas Day
Sun 26 Dec	Boxing Day
Mon 27 Dec	SUBSTITUTE BANK HOLIDAY (Christmas Day)
Tue 28 Dec	SUBSTITUTE BANK HOLIDAY (Boxing Day)
Sat 29 Jan	"Bangers & Bingo" Scouts Fundraiser details TBC

Suspended garden waste resumes
on your usual day starting Monday
13 September

Somerset Waste Partnership		Sep 2021					
Mon	Tue	Wed	Thu	Fri	Sat	Sun	
		1	2	3	4	5	
6	7	8	9	10	11	12	
13	14	15	16	17	18	19	
20	21	22	23	24	25	26	
27	28	29	30				

● REFUSE ● RECYCLING ● GARDEN



Please send copy for the October 2021 issue of 'The Link'
via email to gillhleonard@aol.com or deliver to 1 Lower Street, Rode BA11 6PU
latest Wednesday 22nd September 2021.

The Link is published by Hardington Vale PCC, which reserves the right to edit any material submitted for publication. Opinions expressed are not necessarily those of the Clergy or PCC.