

The Link

The magazine for Rode, Tellisford, Woolverton and
Farleigh Hungerford, part of Hardington Vale



MARCH 2021

Rode Playing Field's Plan For Donated Land

Climate Emergency - See Ecology Section

News On Recent & Future Events

As We Go To Press Breaking News - Church Services Back

...and so very much more local news and info inside!

£1

The Link

March 2021 Contents:

Inside Front Cover HV Contacts	Parish Gardening Pages 22&23	Untold Tales Pages 38-40
Useful Contacts Page 1	Parish Farming Pages 24&25	Noticeboard Pages 41-43
Church News/Svces/Events Pages 2&3	Parish Cricket Page 26&27	Parish Council Pages 44-51
Link Message Page 4	Parish Family & Friends Page 28	...and finally Page 52
Parish News Pages 5-15	Parish Business Page 29	Local Advertisers from Page 53
Parish Health Pages 16-18	Parish Groups Page 30	Church Svces- Inside Back Cover
Parish Youth Page 19	Parish Food & Drink Pages 31-36	Diary/Year Plan Back Cover
Parish Ecology Pages 20&21	Timely Poems Pages 37	

The Parish Of Hardington Vale

Rector	Rev Caroline Walker (Day Off: Friday) The Rectory, Vicarage Lane, NSP	carolinehwalker@btinternet.com/ 834258
Associate Priest & Rode Rural Pioneer	Rev Alex Holmes The Old Rectory, 38 Church Lane, Rode	revalexholmes@gmail.com/01373 830647
Curate	Jo Robinson 3 Manor Barn, NSP	321jorobinson@gmail.com/01373 834643
Children's Worker	Sue Rodford	kidschurch@hardingtonvale.org.uk/812766
Chapel Warden	Farleigh Hungerford – Guy Hungerford	01249 701211
Deputy Warden	Rode - Sally Pickett	831796
Deputy Warden	Norton St Philip – Glenys Brown	834226
Chapel Warden	Tellisford - Rachel Feilden	830322
Electoral Roll	Ros Clarke	admin@hardingtonvale.org.uk/ 834488
Organist	Dr David Thomas	830515
Parish Administrator	Ros Clarke (Office open Mon, Tues & Weds 8.30am - 12.30pm)	admin@hardingtonvale.org.uk 834488
Parish Wardens (Specific responsibilities in brackets)	David Lockley (pastoral and outreach) Christopher Todd (strategy) Geoff Banwell (finance) John Flindall *(buildings)	834414 834856 831139 830456
PCC Secretary	Tony Day	secretary@hardingtonvale.org.uk
PCC Treasurer	Nick Brown	treasurer@hardingtonvale.org.uk/834488

Rode Chapel – Baptist - Methodist

Minister	Rev Tina Swire	01749 595759
Secretary	Bill Jackson	rode.chapel@btinternet.com/830411

Keyholders

All Saints Tellisford	Helen Curwen	831228
Rode Chapel	Alison Hughes	rode.chapel@btinternet.com/830244
St Lawrence, Rode	Wardens and Peter Barnes	-

Community Transport & Local Government

Community Transport	Mendip Community Transport	01749 880613/ www.menfopcommunitytransport.co.uk
	Slinky Bus Bookings	01749 880482
	Frome Community Cars	07596 591391
Mendip D C	General Enquiries	0300 303 8588
Somerset C C	General Enquiries	0300 123 2224
County Councillor	Linda Oliver (Conservative)	loliver@somerset.gov.uk/834210
District Councillor	Barbi Lund (Green Party)	Cllr.lund@mendip.gov.uk/07846 335636

Other Useful Contacts Details

Beckington Family Practice	Appointments T: 830006 Results 9.30-13.00/14.00-16.00 T: 867986	Enquiries and Emergencies T: 830316 Dispensary 8.30-13.00/15.00-18.30 T: 867987
NHS 111 24 hour medical care help	Contact if you have an urgent medical problem and are unsure what to do	T: 111 Online: 111.nhs.co.uk
Frome Rural Beat Neighbourhood Police Team	PCSO 9011 Russell Ford PCAO 9800 John McNally Beat Mgr PC 2673 David Cohen	Russell.ford@avonandsomerset.police.uk/07547 658018 John.mcnally@avonandsomerset.police.uk David.Cohen@avonandsomerset.police.uk

Useful Community Contact Details

Organisation	Contact Name	Contact Number
Allotments - Rode Rode Gardens Association	Lucy Travis (Chair)	831726/Lucy_travis@hotmail.com
Buddy Scheme (Rode)	Mike Salmon	831257/mikesalmon123@icloud.com
Choir - One Voice	Lee Ingram	825058/07766 244321
Community Speed Watch (CSW)	Malcolm Wood	830301/mwood17@uwclub.net
Crafts Group - Meet Mondays 2.30pm @ Rode Chapel	Alison Hughes	830244
Cricketer Club (NSP) Youth & Senior	Mark Finch	07876 191100
Friends of Rode and Norton Schools (FRANS)	George Muxworthy (Chair)	GMuxworthy@educ.somerset.gov.uk. 834327
Gardening: Rode & District Gardening Club Meet 2nd Monday @ Rode Hall	Averil Morrow	830686 averil.morrow@yahoo.co.uk
Ladies Group (Rode) Meet 4th Thursday 7.30pm @ Rode Hall	Pat Banwell	831139
Lunch Club (Over 60's) Meet 1st Monday @ Rode Hall	Alex Sing	Asing_homeandgardens@hotmail.com 830836
Memorial Hall (Rode)	Bookings: Duncan McLennan	bookings@showtech.co.uk/07850 930745 www.rodevillagehall.co.uk
NSP Pre-School	Dawn Strand	admin@nortonpreschool.co.uk/834791
Old School Room Farleigh Hungerford	Dilys McKechnie	01225 754925
Over 60's Meet 2nd Thursday	Pat Smith	830559
Parish Council - Rode Meet 1st Tuesday	Hugh Williams (Parish Clerk)	Clerk.rodeparishcouncil@gmail.com rodeparishcouncil.webs.com
Parish Paths Liaison Officer	Caro Smith	caro.a.smith@gmail.com/830911
Photography Club (NSP) Meet bimonthly 2nd Tuesday	Tony Day	01373 834438/tonyjday22@gmail.com
Playing Field/Pavilion (Rode)	Bookings: Chair: Nigel Clarke	rodepfbbookings@gmail.com biz.nibex@btinternet.com
Post Office (Rode)	Demi Ward	830321
RANS Running & Walking Club www.facebook.com/TeamRANS	Brandon Quentin-Hicks	brandon@bambooohouse.co.uk 07867 545720
Rode & NSP First School Federation	Headteacher: Georgina Muxworthy	830523
Rodevillage.com Website & Twitter Feed	George Berry	info@rodevillage.com http://twitter.com/rodevillage
Rotary Gift Shoeboxes	Sarah Gurr Nicky Robinson-Moore	07801 286997/sarahgurr26@hotmail.com 07734 110353
1st Rode Scout Group (Scouts, Cubs & Beavers) Mon/Wed in term time	Group Scout Leader: Howard Russell	hdrussello1@gmail.com 830640
Scouts Edor Explorer Unit Every other Tuesday in term time	Marcus Bradshaw	explorers@rodevillage.com 07713 165312
Sewing Group (NSP)	Hilary Bodger	834444
Ukulele Group	Ray Floyd	07847 051245
Village Agent	Nic Edwards	07946 461468/ nicolae@somersetcc.org.uk
Walking Group	Liz Dinnis	elizabethdinnis49@gmail.com/07788 656337
THE LINK		
Copy for the magazine & adverts Distribution/Subscriptions	Gill Leonard Caroline Williams	831072/link@rodevillage.com 831046/link@rodevillage.com

Church Reflection & News

REFLECTION - COULD IT HAPPEN HERE?

I for one have been grateful for so many beautiful walks around us to help keep us sane and grounded in this time of lockdown... however muddy we may get at this time of year! No doubt we all have our own favourites. Gazing on distant views, and hearing the flow of stream or river, are a particular inspiration. The lovely circuit from Norton St Philip through Hinton Charterhouse, and down through the woods to come back along Wellow Lane, is one such walk – there are 360 degree wide panoramas up near Norwood Farm while the sheltered woods and valley of Norton Brook offer a complete contrast.

Meanwhile a favourite walk from Rode is along the Frome to Tellisford, over the ancient packhorse bridge and back, with views up into hills and woods on either side, and the river a constant companion. Wherever we walk, we treasure our glimpses of wildlife too – we might see red kites, heron, finches, deer, hares, even the flash of a kingfisher...

One characteristic feature of walking a narrow lane is to see cars stopping (blocking the lane!) while the driver spends time chatting to a walker, often a dog walker. The dog might agitate to move on, but the chatting continues. Occasionally another car appears, and complex manoeuvres are required to allow the new car to continue on its way before the conversation can be resumed.

These types of lengthy wayside conversations recently reminded me of a story in the Acts of the Apostles (Acts 8: 25-36). An important and influential Ethiopian official – perhaps a sort of Dominic Cummings of his time? – is met by the apostle Philip on the road from Jerusalem to Gaza. The Ethiopian is returning from a visit to the temple, and perhaps puzzling over his faith. Being the sort of person who has someone else to drive the horses, he is sitting in a chariot with his head in a book – or a scroll – immersed in a passage by the prophet Isaiah, when Philip comes jogging up alongside him and asks him what he makes of what he's reading. The Ethiopian exclaims that he cannot make head or tail of it and needs someone to explain it to him. He then invites Philip to climb aboard the chariot (I wonder how long they block the road) and Philip proceeds to explain. He explains that very passage – written hundreds of years earlier – describes what has in fact very recently happened, when Jesus gave himself to be 'led like a lamb to the slaughter' and how he died in his (and everyone's) place – so that he (and we) might live.

They continue along the road talking together and come close to the water – perhaps like coming down to the Frome, or like the ford in Wellow – and the official is so overwhelmed with his sudden understanding of who Jesus is and what he had done that he asks to be baptised.

Church Reflection & News

It is a wonderful story. Could anything like this happen along our own lanes?? I have lovely conversations during my walks, though they only occasionally involve cars blocking lanes, and despite lockdowns feel I am getting to know some people quite well. Occasionally conversations continue between encounters, and involve anything from politics to Covid-19, weather and jazz. And sometimes we discuss religion... though no baptisms so far. But what conversation can delight us more than one which helps us see new meaning and hope in our lives?

Michael Harrison

NEWS FROM ST LAWRENCE

The church has been used for two funerals during February but otherwise unfortunately remains closed for normal Services which are still being held online at the time of writing. We are hopeful that it may be possible to resume socially distanced Services in the near future, this is of course subject to guidance from the Government and the Diocese. Please keep an eye open for notifications by email, social media and church notice board near the Post Office.



Breakfast Church continues to be held via Zoom and this is on the first Sunday of each month and a separate Young Families Breakfast Church is also held via Zoom on the second Sunday of the month.

Breakfast Church has proved a welcome opportunity to 'meet' with other people from around the parish and time is allocated in 'break out' rooms to have a chat and a general catch up. The music for these Services is recorded by Becky and Steve Rhodes and we are so lucky to have such talented musicians in the village who are willing to share their musical gifts with us. It is certainly a highlight of the beginning of each month for me.

As the days begin to lengthen and people are out having their daily exercise it is always good to see people walking around the village and we hope the situation will continue to improve over the next few months with warmer weather and more people having vaccines. The tunnel has been long, but the light at the end of it is becoming brighter.

Sally Pickett and Geoff Banwell

STOP PRESS - Church Services in March – details inside back cover

Link Team Message

AMAZING... THANK YOU

It has come to my attention via the Hardington Vale Treasurer's Team that some of our 21/22 Link Subscribers have actually paid in excess of the required subscription to receive their 21/22 magazines as they feel it is worth more! Another Subscriber had inserted a card in their envelope with the words "Excellent Magazine. Well done".

I have to let those concerned know how very touched and delighted I was that you would do this, it is so very much appreciated, thank you all.

Gill Leonard
Link Editor

THE LINK ANNUAL SUBSCRIPTION:

IMPORTANT INFORMATION

We have had an excellent response to the renewal of Link subscriptions, with a renewal rate of nearly 70% to date. The subscription money is due by 25th March at the latest, so if you haven't paid already please do so as soon as possible to ensure the delivery of the April issue of The Link.

However, we are having difficulties because some subscribers who have paid by **bank transfer** have not completed their subscription envelope and dropped it into Rode Post Office. This means that we have no address for the household that has paid, and it cannot, therefore, be allocated to a distributor. In some cases, it is easy for me to trace the address, but I have several subscriptions with no address. If you think this may apply to you, please drop your envelope into the post office (they have spare envelopes if necessary).

IF YOU PAY BY BANK TRANSFER, IT IS IMPORTANT THAT YOU INCLUDE "LINK" AND YOUR SURNAME AND INITIALS AS THE PAYMENT REFERENCE. YOU MUST STILL COMPLETE AND SUBMIT THE SUBSCRIPTION ENVELOPE TO RODE POST OFFICE.

Thank you for your cooperation.

Caroline Williams
Link Subscriptions
01373 831046

1ST RODE (MAJOR) SCOUT GROUP

We would like to thank Clive Harrington and his team who have been clearing our pavements, gutters of weeds etc., around the village for a donation from the Parish Council in lieu of payment, thank you.



We have received a donation of £100.00 from Julia Robb from the proceeds of the Rode Grows and Shares seed share outside her house. Many thanks to Julia and everyone who donated, this will go to the Scout Hut Fund.

We would also like to thank everyone who has so kindly left a donation in our jar at the Post Office/Shop helping towards the Scout Hut Fund (thanks to Sam and the post office team). Our thanks also for the anonymous donation paid straight into our bank account.

To give a very potted history of our Scout Hut, it is now over 50 years old and was moved here and rebuilt in 1990 by a huge village effort, calling in expertise from all directions including the vicar at the time John Jones. Sadly, it is now getting beyond its sell by date and needs replacing.

We started the process before Covid-19 hit and hence the situation is now even more urgent, as for us to meet with maybe long-term social distancing into the future it is just too small.

We have not met face to face for nearly a year now and all our yearly fundraising and our individual's group membership fees (subs) have stopped apart from a few parents who have kindly carried on their payments, for which we are very grateful.

Our only fundraising is our 200 Club which you can still join (forms are available at the Post Office). We are in the process of applying for various grants and are waiting to hear back from these.

We are eager to re-start meetings in the summer when we can plan activities outdoors, if current restrictions allow, and get back to some sort of normality for the youngsters.

Howard Russell
Group Scout Leader
1st Rode (Major) Scout Group

Parish News

EXTENSION TO THE PLAYING FIELD

Over the last 12 months or so I've mentioned that the Playing Field is to be given a piece of the adjacent field as part of the Church Farm Development.



As many of you will have seen the fence delineating the new boundary is up so it now belongs to the parish of Rode (well ... it will do once the Land Registry have endorsed the transfer).

The Trustees looked at some options for the land's incorporation into existing facilities back in 2019. Some of you might remember my article just a year ago where I said that the Trustees' aims were to

- make a positive contribution to the ecology and the environment
- provide a positive benefit for the residents of the village and
- provide a sustainable solution to the land's incorporation.

Well over a year ago now the Committee looked at potential options which were narrowed down to just 3.

We felt that we could do the minimum by installing a wildflower area to encourage wildlife, with gradual introduction of trees over a number of years. This could be followed by further landscaping, such as extension of playing areas, as funds allowed. This didn't seem very adventurous so was discounted.

We actively considered raising funds for a wildlife garden and using part of the land to provide some allotments. When we looked into how much we would need to raise to provide a reliable water supply for the allotments, we decided that this option was probably not the best. The cost of a water harvesting scheme for 10 plots worked out at between £13,000 and £18,000 and a mains supply at over £28,000. There was also the question of access to the allotments as, for safety reasons, it would not be possible or practical to allow plot holders to use their vehicles to move heavy materials, such as compost, to the site. The Trustees are mindful that we have a responsibility to provide a facility for the whole community. Taking a piece of the land that benefitted one particular group didn't appear to fit well with our aims.

Our chosen option is to raise money to develop the additional land as a community orchard and wildlife garden. The concept is to have one part as fruit trees, another as a wildlife section and an extension of the existing playing area into the additional land to, hopefully, encourage the restoration of the village cricket team.

Parish News

The whole area will be planted with a mixture of wildflowers and grass, and provide pathways and seating to encourage access, recreation and relaxation. The Trustees believe that this will be a terrific opportunity for wide community involvement, not just in helping to establish the facility, but also to provide opportunities for future community events.

Obviously Covid-19 has limited what we're currently able to do but we do have a plan which we hope to share with you soon. In the meantime, spring is just around the corner and even some sunshine is promised. Time for a run or walk round the Playing Field or maybe just sit, catch up with nature and watch the world go by for a moment.

Nigel Clarke

T: 01373 830594 E: biz.nibex@btinternet.com

PLAYING FIELD LOTTERY

As once again, the draw could not be in the Cross Keys as it should be, it was done and witnessed independently.

Playing Field Lottery winners in January 2021:

1st - £50.00The Baker Family, Rode.

2nd - £25.00Olivia Nolan, Rode.

3rd - £25.00 Mr. Craig Hands.

If you would like a chance to get a slice of this action, remember only 200 tickets available and a share of £100 & two Sunday roasts (when the Cross Keys is back to normal,) possible all for £1.00 per ticket! And remember you are supporting the Playing Field when you buy your ticket.

Tickets on sale at the Post Office, or directly from Jane and I.

Next draw Wednesday 31st March, but still not in the Keys! If anyone would like to do the draw or witness it from a suitable social distance, then please feel free to do so. Just ask.

It looks like it might be May before we can do the draw in the right place, fingers crossed.

Keith Sharman

T: 830408

Parish News

SOMERSET COUNTY COUNCILLOR UPDATE

COVID:

- ❖ Help and information is now available in a single place on the SCC website: <https://www.somerset.gov.uk/coronavirus/covid-19-latest-advice/> This page is refreshed through the day so please check in regularly to keep across developments and news.
- ❖ Public Health dashboard: Detailed Public Health information dashboards are available on our website www.somerset.gov.uk/coronavirus just scroll down to 'Covid-19 dashboard'. These are updated daily.
- ❖ Vaccinations open to next two priority groups: Thanks to the efforts of hundreds of GPs, nurses, vaccinators, administrators, marshals and volunteers, the Somerset COVID-19 vaccination programme has offered a first dose of a COVID-19 vaccine to the most vulnerable residents across Somerset. Vaccinations have now opened to people in the next two priority groups. They are those aged 65 – 69 (group 5) and those aged 16 – 65 who have specific underlying health conditions (group 6) as identified by the Joint Committee on Vaccination and Immunisation that increases their risk of serious illness from COVID-19. At the same time, we are also inviting anyone from the first four priority groups who still wants to get their vaccination, to book an appointment.

In Somerset, we are inviting those aged over 65 to book an appointment at a large vaccination centre (at Taunton Racecourse or the Bath & West Showground) or a pharmacy-led hub in the county, situated in Taunton, Yeovil or Bruton. GP practices will contact those who have been identified with a specific underlying health condition, to invite them to book at a GP-led hub. For more information on the NHS vaccination in Somerset please visit: <https://www.somersetccg.nhs.uk>

- ❖ Coronavirus home testing kits easier to order: The Government has announced that it has introduced improvements to the home testing programme to make it easier to get tested. They include:
 - People who do not have access to the internet can now order home testing kits over the phone by calling 119, without needing an email address or any other digital requirement.
 - A new NHS Test and Trace partnership with Royal National Institute of Blind People (RNIB) to improve the home testing service for people with visual impairments.

Parish News

- A new video-call support service with specially trained NHS Test and Trace staff that will help people with vision impairments to test at home.

❖ Support for Somerset residents. Help is available for anyone in Somerset who may need additional support: The five councils in Somerset have been working together since the first lockdown to provide a single phone number for anyone in Somerset who needs Coronavirus-related support. Residents are reminded they can call 0300 790 6275 if they need any help themselves or are concerned about relatives or neighbours. Lines are open seven days a week between 8am and 6pm.

ONE SOMERSET:

The One Somerset business case proposes replacing the existing five councils in Somerset with a single council for the county. The Government is currently considering changes to the system of local councils in Somerset. This is a chance to replace the out-dated structure of five councils with a new single, unitary council.

The One Somerset approach would put an end to confusion for residents, give greater powers to local communities, and free up millions of pounds in back office duplication that can be reinvested in frontline services.

You can find out more about the case for One Somerset at: onesomerset.org.uk

Stay safe.

Linda Oliver

County Councillor, Frome North Division

T: 01373 834210 E: loliver@somerset.gov.uk



LAVERTON HOUSE IN TV SERIES LATEST

The ITV series “McDonald and Dodds” returns to our screen for series 2 shortly. Some of the scenes were filmed on location at Laverton House back in the Autumn of 2020.



The new series starts on ITV Sunday 28th February at 8pm!

Jackie Moss

Laverton Newsletter

Parish News

YOU MAY HAVE NOTICED...

Rode General Stores and Post Office is now being run as a family affair.

Sam Baker and her two daughters, Michaela and Demi are now running the shop as well as the Post Office. Jacqui, Wendy and Lucy are continuing to work there too. Sam has been a familiar sight there for a few months now and most of you will have met her.



Sam would like to say a big thank you to Mitzi and Clive for giving her the opportunity to take over the business.

There will be a few changes, but Sam and her family are keen to keep the feel and ethos of the place the same.

Village Bakery goods will still be available Thursdays, Fridays and Saturdays. Castlemead chicken and Padfield gammon and pork can be ordered by Wednesday for collection on Friday, ask in shop for details and prices.

The opening hours will remain the same, with takeaway coffees, cakes and snacks for sale. Customers are welcome into the shop in limited numbers if wearing a face covering, or service is still available at the window for those not wishing to come inside.

SCOUTS 200 CLUB

No results in this issue as a double draw due after we go to print. 200 Club welcomes more subscribers - forms available at Rode Post Office...



SHOW, DON'T TELL

Yesterday I thought I heard screams from our neighbour's garden. If I had been outside the house, there would have been no doubting the distress, because it has happened too many times before. On two occasions I've been in the greenhouse and seen visiting dogs attacking sheep, chickens, guinea fowl – all within the fences, hedges and walls of the garden – and yelled at the owners to get their dogs under control, in an attempt to save the pets and livestock. Last summer part of our garden was fenced to keep sheep in. A few dogs thought they would have a closer look retiring with a yelp: how would they know that the fence carries an electric current? A few passing dog owners questioned whether it was legal to have an electric fence. As a village, we are becoming increasingly aware of diminishing levels of knowledge/ awareness about working rural areas, farm animals and how dogs behave when they see/smell a creature they've been bred to hunt. Rabbits, hens, cats and lambs have died here as a result of dogs being off the lead.

My own searing experience was when our present cat's mother Matilda was killed, within our garden. The dog was off lead as they walked over the Packhorse Bridge, disappeared ahead once, returned, went ahead again and got the cat. The owners came and found me to tell me what had just happened. I was with Matilda when she died ten minutes later, and after trying to assuage the dog owners' distress I wrapped her, apparently untouched, in a pillowcase and then found the wound to her belly. I dug her grave, buried her and lost 2 kilos over the next five days.

The dog's owners were not newcomers or strangers. The dog was doing what he was bred to do: hunt. Last month a family from Bath let their whippet off lead somewhere between Langham Farm and Packhorse Bridge and it disappeared up through Badgers' Break into High Wood: as dusk fell, we came across the distressed family, still calling for their pet. Here is the sign that Messums, Tisbury shows to remind visitors about the law concerning dogs' behaviour towards farm animals. As our neighbour says, It's the owners who seem oblivious about what dogs are bred to do. Why is anyone surprised when that dog fulfils its destiny? Please keep your dear pet on a lead when passing any habitation, for the safety of other people's precious pets and livestock.



Rachel Feilden (Tellisford)

Parish News

RODE GROWS AND SHARES UPDATE

Seed sharing table Saturday 13 February: Despite the bitterly cold weather, it was wonderful to have so many people visiting the seed sharing table throughout the day - our fellow villagers are a hardy bunch! I received many seed deliveries in the week running up to the event, huge thanks to those who shared their spare seeds with us, it wouldn't have been as great or as varied an offering it wasn't for you, so thank you very much.

Outside our house (25 High Street), I organised the vegetable and herb seeds, and flower seeds on separate tables and then in alphabetical groups, trying to make it easier for people to find what they were looking for. We had some out of date seeds in a separate box, it would be a shame to waste them, as they still could germinate, and I recommended to sow more to give them the best chance.



We had packets of giant sunflower seeds available for people who wanted to enter the Giant Sunflower Competition, with seeds harvested from our 10ft giant last year called Bruce. 32 people are now signed up, plus the Rode and Norton Federation primary school classes too, which is fantastic. Lots of keen adults and children alike, already planning where they will grow their sunflower. Rode & District Gardening Club has very generously offered to sponsor the prizes with National Garden vouchers for the winners, and in addition we will also contribute homegrown hampers from our plot. I will be sending an email shortly to those signed up with growing tips and competition information. At the time of writing, I have a few packets of competition seeds left, so if you would like to enter and grow your own giant then please get in touch with me asap.

In advance of the day, I asked the Rode Grows and Shares members which charity they would like any money raised to go towards - the new Scout Hut was suggested and seconded. Seeds were available for free, but we had a donation pot on the table for those wanting to give a financial contribution and in total, we raised £100.00!

Parish News

Future events: We will be organising a seedling/plant sharing table (from those who've germinated too many); Rode in Bloom and a Harvest Show competition are both being discussed; as well as the Sunflower Competition.

If you would like to get involved in any of these events, or have any more event suggestions, then please let me know as I would love to hear from you.

Julia Robb

E: juliarobb@hotmail.co.uk. T: 07527 918314

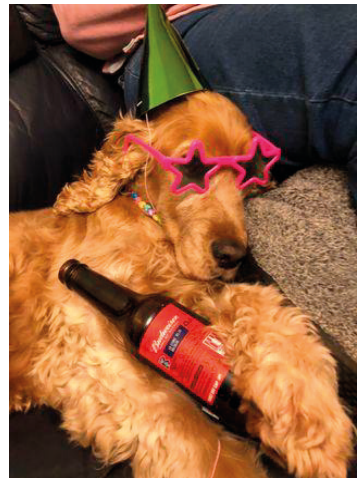
RODE ONLINE DOG SHOW

During half term over 50 dog lovers from Rode joined in with the Rode Online Dog Show via a Facebook group. Over the course of the week everybody had the opportunity to judge more than 60 entries in ten classes.



There were classes for all shapes and sizes of dog, some of which included; the handsomest and prettiest dogs, cutest pup, silliest pose, best action shot (all of which were stunning), and there was even a class for non-canines so we could include other animal lovers in Rode.

The winner from each class went through to our grand final on the Saturday - and the Supreme Champion was the funniest fancy dress winner - a cocker spaniel looking, ahem, "chilled" with sunglasses, a bottle of beer, and party hat! Congratulations!



I just want to say a huge thank you to everybody who joined in by entering the classes or voting for the winners - members of the group very much seemed to enjoy starting the day with cute/stunning/funny pictures and it certainly brightened up a dull February week. As a bonus, we even raised money for the Dog's Trust and the Southwick based charity Ruksak45218.

All in all, the virtual dog show was a real success and, who knows, maybe we'll be able to have a live action version of it soon?!

Alex Holmes

Parish News

ACTIVE & IN TOUCH & FROME COMMUNITY DRIVERS NEWS

At the beginning of 2021, two local charitable organisations, Active and In Touch (A&IT) and Frome Community Drivers (FCD), which both support people within Frome and the surrounding villages went into partnership.



A&IT, which was established in 2011, and whose Director of Service is Dougie Brown, now comprises approximately 200 volunteers who support in excess of 250 members.

The volunteers help and befriend members whilst trying to minimise their feelings of being lonely or isolated from the community.

The charity works alongside, and is supported by, Frome Town Council, Mendip Health Connectors and local businesses. Like FCD, since the onset of Covid 19, which has inevitably increased feelings of isolation and loneliness as a result of Lockdowns and other restrictions, A&IT has had to cease regular weekly group meetings and visits to members' homes by volunteers, instead replacing it with an inventive number of other regular contacts including via phone, letters, Zoom, WhatsApp, and socially distanced meetings outside if both parties are able to do this.



FCD was established in 2016 and Morag Stuart is now at the helm. She ensures the provision of volunteer drivers who take people on their journeys for medical appointments, social engagements, shopping trips and prescription collections. Morag loves being able to talk to and support the volunteers and their passengers – currently co-ordinating up to 150 journeys per month undertaken by a team of 20 drivers. FCD are keen to expand further into villages around Frome to help even more people.

Since the pandemic, the service has enlarged providing more journeys for medical purposes, largely to local GP appointments and the Community Hospital, but also encompassing those to the Royal United Hospital in Bath and Shepton Mallet Community Hospital.

The volunteer drivers, who have all been offered a Covid 19 vaccination by Frome Medical Practice, now also devote more of their time to shopping for essentials and taking vulnerable passengers for their vitally important Covid injections.

Parish News

The symbiotic relationship and common aims shared by the two services have served to strengthen support for many people who are finding life even more difficult in the current situation.

Initially each organisation will keep its own website, emails, and phone numbers but with signposting and links to each other's sites. If you are interested in finding out more about Active and In Touch and Frome Community Drivers, or wish to become a volunteer, please contact them as appropriate, they would love to hear from you!

A&IT -E: enquiries@activeandintouch.org T: 07539 795291

FCD -E: Hello@fromecommunitydrivers.org.uk T: 07596 591391

Editor's Note: Active and In Touch has recently been awarded the accolade of being Frome's Group of the Year for 2020 by Frome Times.

LOCAL GP SURGERY NEWS



New Practice Website - www.beckingtonfamilypractice.co.uk.

We are pleased to announce that our new and updated practice website has been launched. It gives up to date information on opening hours, the best ways to contact us and available services. Please have a look, we hope you will find it a useful reference.

National Coronavirus (Covid-19) Vaccination Programme

We are vaccinating patients based on the priority groups identified by the Joint Committee on Vaccination and Immunisation in collaboration with the other practices in our local primary care network. Most of the vaccinations take place at Shape Centre Mendip District Council Offices, Shepton Mallet. National guidance and vaccine deliveries control when each priority age group can be invited and where vaccinations take place. As a result, we are unfortunately limited in how many vaccinations we can give in Frome. We would encourage you to receive your vaccine as soon as possible, even if this means travelling further.

Please do not contact the surgery directly – we will contact you when it is time to have your vaccination. Please note: If you are awaiting a call from us, our phone number will show as withheld when we call. We are sending some text messages to patients with a booking link.

For more information on the NHS Vaccination programme in Somerset, please visit: <https://www.somersetccg.nhs.uk/health/local-services/health-services-during-coronavirus/covid-19-vaccinations-in-somerset/>

Parish Health & Wellbeing



Bereavement support

The Somerset Bereavement Support Service is here if you've been bereaved and need emotional support or someone to talk to.

Call **0800 304 7412**
9am to 5pm, Monday to Saturday.

In partnership with







The poster features a photograph of a man with grey hair, wearing a light blue striped shirt, sitting at a table and talking on a mobile phone. He is looking down at some papers on the table. The background shows a bookshelf filled with books. The entire poster is framed by a thick yellow border.

If you or someone you know, is affected by grief or bereavement, and would like to talk to someone, please call the Somerset Bereavement Support Service.

It can offer a variety of support to adults and children over 12 in Somerset.

Five Things I've Learnt Offering Bereavement Support

Bereavement Support Champion, Andrew Wilcox, has been supporting bereaved people across Somerset for years. Here he shares some reflections and lessons he's learnt along the way.

Grieving: There are usually good and bad days, most people find the good days gradually outnumber the bad days, aided sometimes with a little help on the way.

Silence Is Golden: You don't have to keep talking and maybe struggling for things to say. Silence really is golden and gives us a chance to really hear what is being said and particularly the way that it is said.

Listening: Really listening allows a 'coming together' even on the phone. The mind can move away from brain thinking and into another dimension where true empathy comes into its own and the magic of healing is facilitated.

Your Presence Is A Gift: Don't pretend you are a doctor and can give advice to make any physical problems disappear. The person doesn't expect this and any healing that is required can take place by virtue of your very presence.

Plan For The End: During our lives we all share two common events, our birth and our death. Births are planned for and celebrated; deaths should be no different.

Parish Health & Wellbeing



**This is your chance
to help transform
the way we help you.**

Somerset Council want to make it easier for people to find the help they need to stay healthy and well - and a survey regarding this has now been extended to 31 March 2021.

Somerset residents are being asked to complete a short, five minute, survey about how they access information about staying healthy and well, and how this can be improved - we'd like to get as many people involved as we can.

Whether it's getting help for an older relative, accessing services for children, or searching for some health advice, there is a lot of information out there and knowing where to start can be a bit overwhelming.

You can find out more at www.somerset.gov.uk/our-information/access-to-information-and-advice/ including a helpful a helpful video about the survey and the aims of the project – and complete the survey questionnaire.

We want to make it easier for people to have clear and easy access to information and support in Somerset when and how they need it in order to live healthy and positive lives.

The advertisement features a photograph of a man sitting up in bed at night, coughing into a tissue. A glowing yellow warning triangle is superimposed on his chest. In the background, there is a bedside table with a lit lamp, a digital clock showing '4:22', and an NHS logo in the top right corner.

**A COUGH THAT LASTS
THREE WEEKS OR MORE
COULD BE A WARNING SIGN**

**JUST CONTACT
YOUR GP PRACTICE**

**Clear on
cancer** **help us
help you**

Parish Health & Wellbeing

SOME TIPS FROM OUR VILLAGE AGENT

As we continue supporting the most vulnerable people in our communities many, like most of us, are finding current restrictions challenging. Below are some great tips for helping to stay mentally and physically active, fit and well:



- You can see all past Talking Cafe sessions on the subject under the 'Mental Health & Well Being' or 'Health & Medical' sections. Tune in for the live streams weekdays at 11am to join in the conversation: www.facebook.com/talkingcafesomerset. Available on YouTube, if you're not on social media go to: somersetagents.org/talking-cafes/
- Download free games you can play, games like Gin Rummy and Scrabble, share with friends so they can download and play together! If you need help get in touch or ask a friend! Challenging games like Suduko are great too.
- Join Age UK Somerset's Relaxation & Mindful Breathing online programme, details: ageuksomersetcoronavirus.org.uk/staying-well/exercises/ageing-well-exercise-sessions/
- Go for a walk- even a few minutes each day helps your body and mind. SASP have some great ideas: <https://www.sasp.co.uk>
- Try an online free exercise class – so much is free on YouTube!
- Find a new hobby – because of Lockdown many companies offer free training or courses – speak to us if you want to find something specific - we can help!
- Contact Somerset Libraries for help on obtaining Audio books, films and much more: somerset.gov.uk/libraries-leisure-and-communities/libraries/
- Fancy a chat with someone? A new friend or a Talk & Support service? We have a new Chat to Connect programme that links people with similar interests so you can connect with new friends! Village Agents can connect you with a befriending or Talk & Support service.

Within your capabilities do try and do some different things each day. I appreciate not everyone has access to the internet and if you have none and would like some support on staying healthy - or any other subject, do please get in touch on 01823 331222 or 07946461468. Stay safe, stay well and stay active!

Nic Edwards

CCS Agents help to bridge the gap between isolated, excluded, vulnerable and lonely individuals and organisations offering specific solutions to identified needs.

They can offer advice and support to find local groups/activities and help with any queries/situations you may have that you need advice/support with. See our 3 sites:

ccslovesomerset.org

somersetcarers.org

somersetagents.org

Parish Youth News & Events

H.V. CHILDREN & FAMILY WORKER NEWS

Dear families, I am starting part time furlough from 22nd February and I will be waiting to hear if any of the Lockdown restrictions may be eased or lifted in March. Then I will be able to let you know about activities planned for families up to and beyond Easter.

Please keep checking the Hardington Vale Parish website hardingtonvale.org.uk for up-to-date information. Go to the section - Children and Family Worker News - this is changed weekly as new events are planned in the parish and/or in the Diocese.



MINI BREAKFAST CHURCH

Our next Mini Breakfast Church will be on Sunday 14th March 9.30am-10.00am using Zoom.



Our theme will be Mothering Sunday.

Please contact Reverend Caroline Walker
E: carolinehwalker@btinternet.com
T: 01373 834258 and she will send you a Zoom invitation if you would like to join us.

I will have activity packs ready for each child that I will give out on Monday 8th March.

SHROVE TUESDAY

Sorry we couldn't hold our usual Shrove Tuesday pancake event due to Covid-19 restrictions. I hope you were able to enjoy delicious pancakes at home?

God Bless

Sue Rodford

Children and Family Worker

T: 01373 812766 E: kidschurch@hardingtonvale.org.uk

Parish Ecology

YOUR VILLAGE (AND YOUR PLANET) NEEDS YOU

In January Rode Parish Council declared a Climate Emergency. We joined around 75% of District, Unitary and Metropolitan Councils (over 300 of the 404 such councils in the UK), and numerous other Town and Parish councils, who have declared a Climate Emergency.

As part of this declaration the Parish Council pledged to support initiatives to address climate change and consider the sustainability and environmental impacts of all our decisions, initiatives and advice. We also undertook to work with other local councils (including neighbouring Parish Councils, Mendip DC, and SCC) to determine and implement best practice in tackling the climate emergency.

The next step is to set up a **Climate Emergency Working Group**, which will have a direct link to the Parish Council. With the unanimous support of the Parish Council there is huge potential for the Working Group to play a vital role in shaping Rode's response to the Climate Emergency and creating real change....one of the core purposes of the Working Group would be to help formulate concrete actions that villagers and the Parish Council should consider taking to reduce climate change.

So - do you have a passion for the environment, an understanding of some of the issues surrounding climate change, a desire to tackle the climate emergency, or some practical ideas as to what we can do, here in Rode, to reduce our carbon footprint? If so, you are an ideal candidate to join the Working Group!

Once formed, we'd be looking to the Group to put forward some potential initial actions which the Parish Council and Rode residents can take to address this emergency.

If you would like to be part of this Working Group, please let me know. In particular, if you would be interested in Chairing/leading the new Working Group (or know of someone who you think would be a good candidate), I'd be very keen to hear from you.

Jim McAuliffe

E: jim.mcauliffe@btinternet.com



Parish Ecology

TOUGH MEASURES NEEDED TO REDUCE MENDIP'S EMISSIONS

A major shift in current behaviours is required to reduce CO2 emissions in Mendip. This is the frank finding of a Future Emissions Pathways report commissioned by the District Council to identify the most suitable roadmap towards carbon neutrality. Mendip is one of 300 councils nationwide to date to have declared a climate emergency. The Council made a pledge in February 2019 “to make best endeavours to enable the district to become carbon neutral by 2030”.



The future emissions report highlights that achieving this requires massive behaviour change, such as a 100% shift to electric buses and trains, an 89% shift to electric cars, and 100% of new housing stock built to the extremely high environmental Passivhaus standards.

Mendip District Council's Portfolio Holder for Strategic Policy and Climate Change, Cllr Tom Ronan, said: “The report lists important ‘next steps’ that we intend to take, such as conducting a detailed analysis of agricultural emissions within Mendip, and to work with farmers to develop a bespoke strategy to encourage more environmentally friendly farming practices. Tree-planting and nature recovery will also be priority areas, to help enhance Mendip's carbon sinks and our district's habitats.....The adopted future emissions pathway and associated measures will be district-wide so it is vital that we work closely with Parish, City and Town Councils to enable the most effective results.”

“Many other councils will be receiving equally pessimistic emissions reports at this time. What is clear is that most of the powers needed to make the necessary changes are not ours, they rest with central Government and it's important we make that widely known so that concerned residents know where the responsibility lies. All local authorities need to be working together to lobby central Government to make the necessary changes.”

Message Reiterated by Bill Gates: There has been an echo of this in the readings from Bill Gates' recent book, How to Avoid a Climate Disaster on Radio 4 this week. Here he sets out his ideas on what can and must be done to put the world on a path to “deep decarbonisation” by 2050. He is clear that the task of saving the planet can't just be left to innovators and the private sector, because new products need supply chains, the infrastructure for them to work and long-term markets to make them pay. All of this requires the right government policies and state funding.

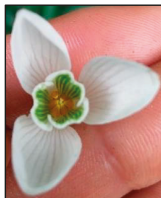
Barbi Lund

MDC Councillor for the ward of Rode and Norton St Philip

Parish Gardening

GARDENING IN MARCH

Spring is on its way! I'm really enjoying the longer days allowing more time to be outside, plus spring bulbs popping up has been a very welcome delight. Especially early flowering snowdrops which are one of my favourites with their delicate flowers, and our deep purple irises have just started opening up! I hope that March brings us some dry and bright weather, we all deserve it, following on from such a wet February.



With spring on the horizon, our gardens are waking up, leaves are starting to shoot on shrubs and trees and grass is starting to grow. There are a few jobs that you can do this month depending on your garden:

- Pruning - finish pruning roses early in the month, don't leave it too late and then if you can give them a feed or a mulch. For each type of rose there is a slightly different pruning method, so if you're unsure of how to prune your roses, I would recommend the RHS website for guidance. It's also now time to prune shrubby dogwood (cornus) hard, as they will then produce colourful new stems for next year's winter interest. You could bring some cut stems inside and place them in a vase, on their own or alongside spring flowers. They dry very well, so can be enjoyed for a long time.
- Cutting back - any herbaceous perennials that you've kept for winter interest such as hylotelephium spectacle (sedum/ice plant), rudbeckia and Japanese anemones might be looking a bit shabby now and its new growth will be starting to come through, so best to cut these stems back now, which will help you see any spring bulbs emerging around them.
- Weeding - try to keep on top of both annual and perennial weeds as they emerge so as to limit their spread. You can hoe annual weeds on a dry sunny day, but with perennial weeds such as bindweed or ground elder you need to make sure you remove all of the roots - this can be a big job, and often one that needs repeated attention.
- Deadheading - once spring bulbs have finished flowered, remove the spent flower heads but leave the stems and leaves intact and let them die back naturally, so the energy goes back into the bulb for next year.
- Seed sowing - we are entering the main seed sowing month, and if you haven't yet been able to, I would recommend looking through your seed packets, decide what you're going to sow, and then organise by month of sowing. Depending on the seed, some will need to be started off indoors like tomatoes or hardy plants such as nasturtiums and spinach can be directly sown outdoors in March.

Parish Gardening

- Grass cutting - when the ground dries out sufficiently, you can start cutting the lawn on a higher setting initially just take the top off, you don't want to cut it too short too early.
- Feeding - acid loving shrubs such as rhododendrons, azaleas and camellias can now be fed with an ericaceous feed to keep the plants happy and healthy.
- Plant - as the ground warms up and dries out a little, you can start planting shrubs and climbers into beds, and summer flowering bulbs such as lilies and gladioli can be planted now for additional summer and autumnal interest.
- Feeding the birds - if you are able to keep feeding the birds and leaving clean water out, they will really appreciate it. Birds will be nesting soon if they haven't already, so will definitely be in need of our garden feeders. Make sure to regularly clean both feeders and water bowls, to keep them hygienic and safe. We regularly have collared doves, pigeons, sparrows, starlings, a male blackbird, a robin and blue tits on our feeder in our tiny 2x2m back 'garden', and have even had a special visit from a wren too. They bring me such happiness watching them feed and flit around, seeing how they behave with each other and the pecking order. They absolutely love the sunflower hearts we put out for them, have bought a 16kg bag which should last a few months!

Shared Gardens - We have been working on the preparations for extended our plot - we've prepared the smallest new bed, dismantled and collected our glass greenhouse (one of two planned), picked up scaffolding boards for the new bed edges and also collected approximately 2 tonnes of spare topsoil. We will need a lot more topsoil for these new beds, so if anyone has any spare topsoil please let me know, and also if you have any spare greenhouse glass, we would really appreciate it, thank you.



Do you have a patch of garden that you don't use any more or is too much work? Would you be interested to share your garden with others? Or would you like to have more space to grow vegetables, fruits and flowers? If so, I would love to hear from you if you are interested in getting involved in the Garden Share scheme across the parish.

Julia Robb

E: juliarobb@hotmail.co.uk. T: 07527 918314

Editor's Note: See page 12 for Rode Grows and Shares update and see page 30 for Rode District Gardening Club news.

Parish Farming



I woke at 6 and it was still, silent and untouched. It had snowed, albeit briefly, but no sooner had we woken up to a blanket of white silence, that it was gone! We seem to sit in a small micro climate here, where we just get a glimpse of wintry weather; in fact, we are more likely to get rain! As we approached the end of January it was more noticeable that the days were starting to stretch out. For me, leaving the Yard in a slither of daylight was quite exciting after almost 3 months of ambling home in the dark!

Fine Foods: We have still remained busy with web orders, click and collect and customers visiting our little shop. We always have offers on, so do keep an eye on our website www.fusselsfinefoods.co.uk. The Farmer's Markets continue to be well attended and are a fantastic outlet for us - a reminder of where we go each month... open between 9 and 1! 1st Saturday: Axbridge in the Market Place. 2nd Saturday: Frome outside Cheese & Grain & Keynsham outside the Library. 3rd Friday: Sherborne at the Market Cross. 3rd Saturday: Nailsea in the High Street & Wimborne in the Town Centre. If you have never visited a Farmer's Market, then you will be surprised at what is on offer. Locally produced and sourced not only by Farmer's! From freshly dug vegetables (soil included) to home-made scotch eggs, fish, cheese, preserves, charcuterie, micro greens, home-made cakes to name but a few. We are a friendly bunch and love being part of the Farmer's Markets.



Tours & Talks: We are now taking bookings for the 2021 season. Soon to be announced are the dates for our Blooming Tours in April and May. We will be reintroducing our Group Tours but limiting the numbers to 15 maximum, so we can safely operate within any Government Guidelines, current at the time. The price will remain at £18 pp for a very informative (and often humorous opening talk), a visit to the field to see the rape, followed by a further talk about the press and production line and ending with a cooking demonstration and bowl of delicious food showing how versatile our range of products can be!

Parish Farming

Farm: You will start to see a difference in all our crops but the Oilseed Rape will start to move quickly. This is the time when it starts to come out of hibernation; with a boost of liquid fertiliser it will be away. We have mainly planted a variety called 'Dazzler', which is an early variety meaning that it will come into flower in April. Jamie of Waggle & Hum will be arriving with his Bees again in the next few weeks, meaning Tim will be on the early shift aiding Jamie to site the hives, as dawn breaks. The rape, as you may know, is an early food source for the bees as they wake up from their winter hibernation. Did you know we stock jars of honey in our shop? The fields are once again very wet which means that getting any farm machinery onto the fields is currently impossible. Shaun is always watching the weather, so if he gets an opportunity, after a few dry days, he will know there will be some fields he can get onto. Shaun will also shortly be drilling some Spring Wheat on some rented land not too far away. Once he has a good run of drier weather, he will be out everyday, as there is a lot to do and a lot of acres to cover. The team in the workshop will be ensuring all the farm machinery is serviced and ready for another season.



Finally, as we approach an end to this current Lockdown (is it really 8/9 weeks) and relaxation of some restrictions, perhaps we can take some tentative steps towards meeting up with family and friends again. The vaccine programme has been excellent and so hopefully many more groups will have received their vaccine by the time the April Link comes out and the first to be vaccinated, will be receiving their second dose!! In the meantime, take care.

Lizzy Etheridge

...Footpaths - please could we remind you to keep your dogs on short leads on the footpaths alongside the crops (to prevent crop damage) - ; and to pick up after them. Also, there is NO footpath through the Yard, at any time. Thank you. *Andy Fussell*

www.fusselsfinefoods.co.uk | info@fusselsfinefoods.co.uk | 01373 831286

Parish Cricket

LOCAL CRICKET 2021 SEASON

It's been a long tough winter but with Covid vaccinations being given at a fantastic rate of knots, it promises to be a good spring and summer.

Hopefully this current Lockdown will be eased over the coming months and we can all get out a lot more.

To this end I'm very optimistic about the coming cricket season and feel we will start the season at the usual time this year, all be it with some Covid restrictive precautions in place to start with.

We have a brilliant set up which caters for all age groups, so there is something for everyone and what better way to start by getting out in the school holidays at Easter and having a good run around and fun with all your friends in preparation for the new season.

Here's what is on offer in your local area....



JUNIOR CRICKET FOR ALL BOYS AND GIRLS

Easter Holidays Cricket camp - All age groups - Fun and games and getting fit for the new season.

Thursday evening training –
All age groups including:

All Stars - Entry level Reception and year 1/2
Fun and games with parental participation. You even get a goodie pack consisting of a bat, ball, back pack, water bottle and personalised shirt and cap. Fun and fitness for all the family.!

U7s & U9s

Still with the emphasis on fun we start to learn the game of cricket. Kwik Cricket is played with plastic bats and balls and is totally inclusive. Bring Granny and Grandad to watch their first matches at the many Sunday morning Kwik Cricket Festivals.

U11, U13 and U15 hard ball cricket

We have fantastic facilities, kit and qualified coaching staff to progress cricket through the various age groups. We play competitive league and cup matches throughout the season in the Bath and District Youth Cricket League with pathways for development that could lead to district and county selection.

Parish Cricket

U19 AND SENIOR CRICKET

If you want the T20 razzmatazz of large crowds, coloured kit and flashing bails, or the Saturday afternoon tradition of league cricket, or the more social side of evening friendly cricket then again we can cater for everyone from the dizzy heights of Wiltshire League to a hefty slog to cow corner.

If you have just moved to the area or the kids have grown up a bit and you want to dust of your prized bat from the attic, come along and have a game this year.

THE SOCIAL SIDE TO CRICKET

You don't have to play to be involved.

All teams and coaches need help in organisation or you may fancy helping with pitch preparation or grass cutting or you may just fancy joining the "Prosecco Wednesday" crowd for some social chitchat and supporting your local team.

Quiz and social evenings, there is something for everyone.

Whichever it is we would love to see you this summer.

There will be more info in the April edition or just contact me and I'll give you the details you need....

Mark Finch

Chairman Beckington, Norton St Philip & Rode Junior Cricket

T: 07876 191100



Family & Friends Notices

IN MEMORY OF JOHN WHEELER

Just a few lines to thank the friends and neighbours for all their help and sympathy following the loss of my husband John Wheeler on 17th January.

John lived in Rode for 56 years and we were married in St. Lawrence church. He was a loving father to my children and had a great love for music. He was an accomplished organ player and an active member of the community in his youth.

When we came to Rode, he soon became involved in church services and regularly played at Rode, Rode Hill, Tellisford, Farleigh Hungerford and Woolverton. He played the organ at several other churches in his time, in fact too many to mention.

He spent much time traveling for his work in the construction industry but always looked forward to coming back to play the organ again and meeting up with villagers and I am sure he would have appreciated all the kind support and messages we have received.

If anyone still wants to make a donation to the British Heart foundation in his memory, please do so via Wayne Kelly Funeral Directors 01373 476277 or contact through the website: waynekellyfuneraldirectors.co.uk

Thank you.

Jean Wheeler



THANKS TO AN UNKNOWN GOOD SAMARITAN...



Jenny Sandilands wishes to thank the kind gentleman who pulled her to her feet, with some difficulty, after her fall outside the post office in Rode, on Monday 8th February.

She hopes that he didn't injure himself!

THE FARMERS WIFE

I've been creating delicious food from my professional kitchens on Chatley Farm in Norton St Philip since 2002.

However, I not only lived for many years in Rode, I was also the landlady of The Red Lion at Woolverton for many years!

Prior to the pandemic, my team and I catered for some of the biggest outdoor weddings, events and shows in the county with my luxury catering company, A Bit Of A Do Catering.



However, during the last year with restrictions in place, there has been little demand for outside caterers!



With this in mind, I decided to focus on my **Chatley Farm Brownie** business, normally only seasonal around Bath Christmas market.

With the help of local marketing consultant, Lucy Clayphan (Bright Duck Marketing), I re branded and launched a new shiny website in October 2020.

Offering more flavours than ever before, you can now order online and have brownies delivered direct by Royal Mail, visit www.chatleyfarmbrownies.co.uk.

With Lockdown, gifting by post is more popular than ever and we now offer 9 delicious flavours, (inc Gluten Free) as well as free gift wrapping and gift cards.

Follow us on the farm on facebook.com/ChatleyFarmBath

Joanna Pobjoy

#SHOPLOCAL

Parish Groups

RODE & DISTRICT GARDENING CLUB

We are pleased to announce that we have arranged for a special 50% discount rate for seeds bought from Suttons Seeds. Join the Club at a special membership rate of £4 for this year to get your discount code. People who paid for 2020 are still members for 2021. Remember there is 10% discount on purchases from Barthers Plant Centre, Chapmanslade and Prior Park Garden Centre, Bath. Contact me for details.

We are holding our AGM on Monday 8th March 2021 at 7pm. on Zoom. Do you want more flowers, more wild flowers, more trees in our environment? Come and join us and help develop new ideas for improvements in our village.

Averil Morrow

T: 830686 E: averil.morrow@yahoo.co.uk

MONDAY LUNCH CLUB

Regretfully Lunch club will remain closed until further notice - although with the roll out of the vaccines things are looking a little more hopeful.

As soon as we feel it is safe to do so we will be back - we just have to be patient!!



Hope everyone is managing and keeping well - we are missing you all madly!!

With love and best wishes,

Alex Sing and the Team

Editor's Note:

Sadly, due to Covid-19 the activities of our long standing parish groups have been curtailed and this Section of the magazine has shrunk accordingly! Hopefully with the lessening of government Covid-19 restrictions we shall see the return of these groups before too long.

If you are involved with a group in the parish that is continuing within current restrictions we would be delighted to include details of it in the magazine just email link@rodevillage.com.

Parish Food & Drink

Our “Parish Food” Advertising Section, started during the first Lockdown last year, is expanding again, and thanks to our new advertiser, “Blindmans Brewery”, we feel a change of name is required - welcome to “Parish Food & Drink”.

Before anyone remarks that the business is not based in the parish - as many will already know Lloyd Chamberlain, whose business it is - has been a resident of Rode since 1978.

We do hope our readers have been sampling and enjoying the wares of this Section’s advertisers – as well as utilising the services of our advertisers at the back of the magazine when needed. We could not produce the magazine without the support of our valued advertisers and are very grateful to them.

We have not received a recipe for inclusion from any readers for quite a while...

If you have a favourite recipe you would like to share for others to enjoy too please do send it in, email it to link@rodevillage.com.

... and you will receive a bottle of Fussels Rape Seed Oil courtesy of Fussels Fine Foods when your recipe is printed.



blindmans



brewery



**Fresh Craft Ales, Casks, Mini Kegs, Bottles, Cans, Bag in Box
Local & UK Delivery for all occasions**

DISCOUNTS AVAILABLE FREE LOCAL DELIVERY OPTIONS

www.blindmansbrewery.co.uk 01749 880038

Blindmans Brewery, Talbot Farm, Leighton, Frome



Parish Food & Drink



32a High Street, Rode, BA11 6PA
Telephone 01373 830321

Opening hours for the shop, café and Post Office...

Monday 09:00 – 17:30

Tuesday 09:00 – 17:30

Wednesday 09:00 – 13:00

Thursday 09:00 – 17:30

Friday 09:00 – 17:30

Saturday 09:00 – 13:00

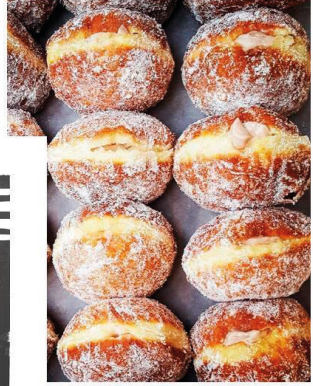


fussels Original Rapeseed Oil now has a baby brother!

Following feedback from our customers, we've now introduced a 250ml bottle of our Original Extra Virgin Rapeseed Oil. The same great taste and versatility, just in a smaller bottle.

Come and see us at our factory shop in Rode (BA11 6AA) or search "**Fussels Rapeseed Oil**" to order online for delivery or FREE Click & Collect.

Parish Food & Drink



**FREE LOCAL
DELIVERY**



**07486 059985
11 LOWER ST, RODE**

We are a craft bakery in Rode selling a range of baked goods available for free local delivery or collection every Thurs, Fri & Sat.

Visit our Facebook Page or Website for our menu, with specials announced every Monday based on what's fresh and in season.

Order online or by text or email. 24 hour pre-order is essential.

[07486 059985](tel:07486059985) / joewilkinbakes@gmail.com / thevillagebakingco.co.uk

www.facebook.com/thevillagebakingco



Parish Food & Drink

CHATLEY FARM BROWNIES

NEAR BATH

www.chatleyfarmbrownies.co.uk



Lovingly handmade on the farm
9 Delicious flavours
Delivered by Royal Mail

FREE Gift Wrapping & Gift card
Gluten free options
Local Collection from Norton St Philip

OUR MULTI BUY OFFERS

£8.50

For 1 pack

£8.00

each for 2 or 3
packs

£7.50

each for 4 or
more packs

Follow us on facebook!

www.facebook.com/ChatleyFarmBath

Somerset Foodie

ingredients to inspire

Somerset Foodie Ben Tollworthy has been sourcing quality ingredients for professional chefs for over 20 years... and now, through our new online store we're making these easily available to you.

Based here in Rode at Fussels Fine Foods, you can order a huge range of fantastic ingredients online to help you create memorable meals at home.

Looking for meal time inspiration?

Every week we create delicious recipes using our ingredients, and have a YouTube channel where you'll find Ben's 'how to cook' videos to follow.

How to order



- Step 1: Go to www.somersetfoodie.com and browse our online shop.
- Step 2: Select shipping method, either 'Click & Collect' or 'Local delivery'.
- Step 3: If you live in Rode or the surrounding area, use promotional code 'Doorstep' and we'll deliver FOR FREE within 24hrs*.

 somersetfoodie.com

Somerset Foodie Ltd, Church Farm, Rode t. 07834 852 561



*order before 3pm and we'll aim to deliver the same day, please note we don't offer weekend deliveries

Parish Food & Drink



Delivery and Same Day Collection Service

We are trying to help those in our community that may have trouble getting out to get supplies by offering a delivery and a collection service.

If you would like an order then please check our website, email your order to us or give us a call and we will deliver to your door within a day or two or if you would like it that day you can just drive into the car park and we will load it straight into your boot. No need for you to even get out of the car.

This applies to everything we sell in the shop including our lovely ready meals, meat from the butcher, fresh fruit and veg as well as bread and milk.



Farleigh Road

FARM SHOP & CAFÉ

Phone 01225 720006

www.farleighroadfarmshop.co.uk

Timely Parish Poems

The poem below was sent in by Pat Banwell, she said “I don't know who wrote the following version - the original was by Yeats, but this is very well done”.

A BRIEF PAGEANT OF ENGLISH VERSE

I won't arise and go now, and go to Innisfree,
I'll sanitize the doorknob and make a cup of tea.
I won't go down to the sea again; I won't go out at all,
I'll wander lonely as a cloud from the kitchen to the hall.
There's a green-eyed yellow monster to the north of Katmandu
But I shan't be seeing him just yet and nor, I think, will you.
While the dawn comes up like thunder on the road to Mandalay
I'll make my bit of supper and eat it off a tray.
I shall not speed my bonnie boat across the sea to Skye
Or take the rolling English road from Birmingham to Rye.
About the woodland, just right now, I am not free to go
To see the Keep Out posters or the cherry hung with snow,
And no, I won't be travelling much, within the realms of gold,
Or get me to Milford Haven. All that's been put on hold.
Give me your hands, I shan't request, albeit we are friends
Nor come within a mile of you, until this trial ends.

The sender of the ode below wishes to remain anonymous...

OUR VILLAGE MATTERS

To build or not to build?
To try and encourage others to your way of thinking?

How to keep our village the wonderful place it is?
How do we evolve as a community?

Some things aren't black or white, they are grey.
Some things aren't right or wrong, they just ARE.

Everyone has the right to their opinion.

We all come from different backgrounds and have different belief systems.
We all want and deserve to be happy and to be loved.

Whatever your thoughts on any village matter,
please remember to be kind to each other.

Untold Tales

Continuing Anthony Battersby's articles about his over 30 years working on the operational development of child immunisation programmes in remote and difficult parts of the world...

CROSS BORDER: BURMA

In the autumn of 1999, I was asked to evaluate a primary health care project in that part of Myanmar or Burma, as the Kachin preferred to call it, controlled by the Kachin Independence Council(KIC).

The Kachin is one of the hill tribes fighting against the Burmese Government, called the State Law and Order Restoration Council (SLORC).

The tribal area crosses the border into China, where the Kachin are known as the Jingpo. This was important because as long as the health services were offered to both sides of the border the Chinese authorities did not look too closely at the operations.

I flew from Bangkok to Kunming the capital of Yunnan Province changed planes and flew on to Mang Shi the capital of the Jingpo Autonomous Prefecture in Western Yunnan.

There I was briefed on how I was to get into Burma. The area is remote, mountainous and covered in dense jungle.

Our plan was to masquerade as jade dealers, the area is popular with smugglers and jade is one of the things smuggled.

My base was to be the little town of Ying Jiang very close to the Burmese border.



Untold Tales

My first trip into Burma began at 04:30 in pitch darkness and pouring rain.

Two hours brought me to the Chinese border checkpoint where without me being seen by the border guard, my counterpart arranged for us to leave China.

This does not mean that we immediately entered Burma, there is a river to cross but on the Burmese side there is no checkpoint. As we left China the quality of the road plummeted, the metalled surface gave way to mud and progress towards Lai Za fell to a crawl.

By the time we entered Burma the sun was up and it had stopped raining.

For me this was an especially significant moment, in the 1930s my stepfather as a young officer in the Burma Rifles had carried out expeditions through these same hills to recruit young Kachin men to join his regiment, 2nd Burma Rifles.

He again passed through them in 1942 when he walked over 600 miles in three months behind the Japanese lines to rejoin the Indian Army at Imphal.



Sino-Burmese border country

My destination was a health centre where children were being immunised against TB, polio, whooping cough, diphtheria, tetanus and measles.



Sino-Burmese border stone

Because the area was patrolled by SLORC we would not be able to stay over night so after visiting the health centre we returned to Ying Jiang.

Having established that crossing the border was not a problem, the next day we headed for Mai Ja Yang. This proved a bit more of a challenge as the road had been blocked by a landslide and we had to wait while the Chinese cleared the debris off the road.

At the second crossing into Burma the only sign of the border was a large stone in a jungle clearing.

Untold Tales

The plan this time was to stay several days and visit a number of health facilities.

All went well on the first day except that I found the local alternative to vaccine involved dead snakes in glass jars.

I stayed overnight in the village Dak bungalow, this is the most humble form of accommodation constructed for mail carriers and originally built in colonial times, more superior is the Government Rest House and the most sophisticated is the Circuit House where Circuit Judges stayed.

Dak bungalows are free to stay in and the cost of staying in the others has never changed from the 1930s because the per diem payment for Government Officers has never changed, so they are now very cheap.



Local “vaccine”

The Government did not know that I was using its accommodation.

The following day on return to another health centre I was asked to enter by the back door because there was a Chinese party visiting the health centre, while the Chinese knew that I had crossed the border as long as they did not see me they would not have to take a view.

As they too were unofficially across the border I did not see why they would need to take a view, but complied and entered through the back door.

Later we had to radically change our plans because we were told there was SLORC patrol approaching and we must not be seen by them so the visit to the third village had to be abandoned and we smartly returned across the border to safety in China.

The hill tribes are predominantly nonconformist Christians, mostly Baptists having been converted by missionaries in the 19th century as a result they use the Latin script which means that health records are easy to read.

The persecution of the Kachin along with the other hill tribes continues.

I still have the chunks of jade I carried to make me look like a jade dealer.

Anthony Battersby

Noticeboard

BRADFORD ON AVON & DISTRICT FLOWER CLUB

Following on from a very successful quiz night and demonstration held by Zoom in January and February, the next Club night meeting (again via Zoom) will be on Thursday 4th March at 7.30pm when we welcome Pip Bensley, a well known demonstrator, who will be leading the evening with some stunning arrangements. The following meeting will be on Thursday 1st April at 7.30pm.

Please look at the Bradford on Avon & District Flower Club's Facebook page for details on how to join meetings plus lots of ideas / discussion about flowers and arranging, including a monthly theme to create yourself and share on the page!

For any enquiries please contact Sharon Ecob (01225 309208)



Lending with Heart and Mind

Mendip District Council fund a not-for-profit loan scheme for homeowners and landlords*.

We understand the expense of maintaining your home and we work with you to take the stress out of funding repairs, improvements or adaptations.

We see you as an individual, not a credit score. Our knowledgeable team of advisers will guide you through the process of applying for a home improvement loan.

For a no-obligation assessment
or more information visit
www.lendology.org.uk or call **01823 461099**

Heatherton Park Studios, Bradford on Tone, Taunton, TA4 1EU

*subject to eligibility

Noticeboard

Ensuring the big decisions are made on the best information

census2021

Census 2021 will be key to making sure the big decisions on the future of our hospitals, schools, transport and other public services, following the pandemic and EU exit, are based on the best information possible. Run by the Office for National Statistics (ONS), the census – taking place on March 21 - is the once-in-a-decade survey that gives the most accurate estimate of all people and households in England and Wales.

The digital-first census will not only provide a fresh picture of the size of all communities, it will also shed light on the health, social and economic changes to our lives.

“After years of planning, the census is almost upon us,” census director of operations Pete Benton said. “In the coming days and weeks you will be hearing more and more about why the census is so important, why you must take part and, crucially, how you can take part. Every household will soon receive a postcard, explaining what a census is, and in early March letters will arrive in the post inviting people to take part in the digital-first census.

“In light of the coronavirus pandemic, we need this up-to-date information to help shape vital services for the years to come more urgently than ever before and we are making sure everyone can be safely counted in line with all government guidance.

“We have made it simple, straightforward and safe to take part. It takes just 10 minutes per person to fill out your form and if you can't get online, there are paper forms available for those who need them, as well as lots of support. Now is the time to make your mark on history.”

Running the census in times of a pandemic has naturally thrown up some challenges and the ONS' focus is ensuring the safety of the public.

“We want everyone to be safely counted and we're making sure our plans are always in line with the latest government guidelines,” Pete said.

“Census field officers will only follow up with households after Census Day on March 21 if householders have not yet completed their questionnaire. They will never enter a household, they will always be socially distanced, be equipped with PPE and work in line with all government guidance.”

Noticeboard

Some questions also have updated guidance to reflect our changed living and working circumstances.

Pete added: "For those on furlough, we have updated guidance on how to answer questions on work. All students need to be included in the census, and they should complete it for their usual term-time address. If they're currently living at their home address, they will need to be included in the census for that household too."

For the first time, there will be a question asking people whether they have served in the armed forces, as well as voluntary questions for those aged 16 and over on sexual orientation and gender identity.

First results will be available within 12 months, although personal records will be locked away for 100 years, kept safe for future generations.

For more information, visit census.gov.uk.



NATIONAL INSURANCE SCAM TELEPHONE CALL

We have been made aware that a scam has been circulating where the offender is claiming either your National Insurance number has been compromised or has been used in serious crime.

This scam is conducted via a telephone call which is automated, promptly followed by the usual request for action on the part of the recipient to press 1 on the keypad, again 'please do not do this'.

You may feel pressured into doing so as the message may state they are from the National Crime Agency, 'they are not'.

This is a scam.

If you receive a call claiming your National Insurance number has been compromised asking you to press a button on your keypad, please terminate the call.



Parish Council Meeting Minutes

MINUTES OF THE VIRTUAL (via ZOOM) MEETING OF RODE
PARISH COUNCIL HELD
ON TUESDAY 2nd FEBRUARY 2021 AT 7.30 pm

UNCONFIRMED

Present:

Cllr Peter Travis – Chair (PT), Cllr Ann Edney (AE), Cllr Elaine Butler (EB), Cllr Steve Eyles (SE), Cllr Pat Restorick (PR), Cllr Jim McAuliffe (JM), Cllr Andy Pickett (AP), Cllr Mike Salmon (MS)

In attendance: Cllr B Lund, Hugh Williams – Clerk, and 7 members of the public

1. Public Participation:

Before opening the meeting to Parishioners the Chair, on behalf of the PC, wished to express his thanks to Clive Harrington and Ben Vowles for the work they were carrying out cleaning the roads and pavements around the village. The improvements had been significant.

It was reported that someone had fallen on ice on Clay Lane which had been caused by the water run-off from the adjoining fields. It was agreed that salt and grit would be put down on this, even though this could get washed off by the running water it should reduce the chance of ice forming. However, it was noted that the nearest grit bin on Church Lane had not been filled, the Clerk agreed to chase this up.

Comment was made that DLA Piper's fees although good for fighting the development proposed for Merfield/The Mead site made by a comment at the Hearings that possibly encouraged development on Barbara's Field. The Chair said that although this had been unfortunate the main thrust by DLA Piper had been to challenge extra housing in any of the three villages, concentrating on Mendip's proposed sites which was for the Merfield/The Mead site in Rode.

Comment was made that the plans for development of Barbara's Field were inaccurate and concerns were raised that if this went ahead further green land could be built on in a domino effect. Many of the letters sent expressed the same concerns as those expressed over the Merfield/Mead application.

The PC was encouraged to look into speeding in the village.

Comment was made over support for the Barbara's Field development published in The Link and a question raised whether any costings had been carried out.

2. Apologies for absence: Cllr L Oliver

Parish Council Meeting Minutes

3. Approval of the minutes: The minutes of the Parish Council meeting held on 5th January 2021 were approved with the following amendment to 5th line in Minute 8, which should read:

‘Cllr Lund pointed out that Somerset and Mendip who had buildings and controlled roads etc. and **had resources to do a baseline assessment found the assessment of their carbon baseline to be complex.**’

4. Declarations of interest: SE and AP declared an interest in planning application 2021/0071/OTS. It was noted that little or no discussion would take place at this meeting, given that there were going to be other parish council meetings in the next week to consider this issue.

5. Report from County Councillor: The report sent in had been circulated to all.

6. Report from District Councillor: Cllr Lund reported that Mendip had three new temporary priorities in response to the Covid19 outbreak; these were: vaccinations, delivering services in particular to homeless and waste services, and supporting the economy. She added that the Green Party would be pushing for a green economy when the recovery starts and not ‘business as usual’. Waste collections would now be starting at 6.00am and not 7.00am so people were encouraged to put their waste out the night before.

7. Actions from the previous meeting:

- i) **Weed control:** ‘Scrubbing’ had now been carried out on a number of the roads and hand clearance was now in progress. It was agreed to approach Ben Vowles to become Rode’s legthsman.
- ii) **Drainage Survey:** JM said the programme had been outlined in the February edition of The Link, with the work being funded by Somerset Rivers Authority through Mendip who had employed Calm Engineering to do the work.

This would be done in two stages – the first was a survey of all the gullies and drains in the village. Some of this would involve the removal of drain covers and putting cameras down them, therefore there would be a requirement to move some cars. This work should start once approval for road closures had been granted, hopefully later this month. The second phase was to contact parishioners and to get feedback on flooding issues. A letter outlining all of this would be sent to every household and feedback would be either online or by return to the Post Office.

The results should result in remediation work which would be carried out over the next two or three years.

- iii) **Website accessibility:** This was still to be progressed and the Clerk and Chair would put together a proposal for approval by the PC but this might not be until April meeting.

Parish Council Meeting Minutes

- iv) **Riverside walk:** The current signs about passes to use the walk were now out of date. It was agreed that SE would get three new signs prepared with contacts as Caro Smith and the Clerk.
- v) **The Sportsman:** Information from Somerset County Council indicated that the adoption of this was not going to happen for some time with priority being given to new sites and those under construction that supported the economy.
- vi) **Marsh Road:** It was hoped that the drainage gully would be part of the Calm Engineering survey; there were a number of drives that appeared to block the gully. It was agreed that County Roads should be asked to look at the road, pavement demarcations and drives to determine who was responsible for what as currently this was unclear.
- vii) **Covid19 and Buddy Scheme:** MS reported that he had had only one request to reinstate a Buddy. He had spoken to a number of Buddies and most reported that they had continued being Buddies even when lockdowns had been relaxed. Therefore, the scheme appeared to be still working well.
- viii) **Cheap Street tree:** The Clerk reported that to pollard the tree it would cost £300. It was agreed to proceed after written approval had been given by the neighbouring resident.
- ix) **Lower Street:** Clearance near the pump had revealed a broken fence which had now been repaired; the ownership of this fence was unclear. The Bench required replacement and a quote would be sought to buy one. A quote of £190 had been given to build a new one. A further quote would be sought to repaint the pump.
- x) **The Bell:** EB said that the manager had reported that someone was interested in renting it. However, he had agreed to send someone to look at it given the concerns over its current poor state of repair.

8. Climate Emergency: JM reported that the Working Group (WG) had still to be formed, he said few from the current 'Rode has a Climate Emergency Group' had joined the WG, mainly due to other commitments. A request for people to join the WG would go into the March Link and onto the Rode Facebook. It was important to get an environmentally active Chair. Cllr Lund reported Norton St Philip would be willing to share ideas with Rode and it was currently looking at: hedgehogs, electric cars, and energy surveys for homes along with solar streets, the latter having 12 interested properties in Norton and Rode.

9. Highways: SCC had asked for feedback on areas where road markings were more than 80% worn. Councillors agreed to take specified areas to collate data for submission before end of March.

Parish Council Meeting Minutes

PT said he had spoken to the Traffic Consultant about traffic through the village and also the possible need for traffic report with regard to the Barbara's Field planning application. The Consultant would be able to provide a report on traffic in response to the planning application before the end of February, if required.

It was agreed to approach Traffic Management at SCC requesting repeater signs on Rode Hill as the Police already recognise this as a speeding area.

10. Planning matters

a. New applications:

2021/0025/HSE: Erection of solar panels on garage roof – 18 St Lawrence Lane. No objections

2021/0071/OTS: Outline planning permission for erection of up to 49 dwellings, formation of vehicular accesses, open space, landscaping and associated works. Change of use of agricultural land to public open space, community allotments and orchards – Land off Church Lane. PC to discuss further at public meeting to be held on 4th February at which public comment would be limited to 3 minutes per person; and to agree its position at Special PC meeting on 9th February.

2021/0139/HSE: Extension of single garage to form double garage – 1 St Lawrence Lane. No objections.

2021/0141/HSE: Erection of double garage rather than single garage and car port – 9 St Lawrence Lane. No objections.

b. Mendip decisions:

2020/2286/HSE and 2020/2287/LBC: Demolition of existing extension and replacement/erection of single storey extension and roofing works – 12 Lower Street. Approved with conditions.

2020/2346/VCR: Application to vary drawings of planning approval 2020/0973/FUL – rear of 16 Lower Street. Approved with conditions.

2020/2378/TCA: Apple trees thin crowns by 20 - 30% and reduce height by approx. 1 metre – 30 High Street. No TPO required, approved.

2020/2503/TCA: Removal of lower branches of Hornbeam, reduce height of Cornus and reduce height of and shape group of 6 Photinias – 33 High Street. No TPO required, approved.

11. Church Farm access to village/footpaths and playing field: The path made of hoggins had been started near the development, but most of the path on the S106 land had yet to be done. Trees are to be cut through to create access for this path onto the playing field site. It was agreed that AP would prepare a letter to formalise the fact that the new fencing and the actual S106 land differed.

Parish Council Meeting Minutes

12. Inspector's Hearing: The Chair reported that a document ED48 had just been issued by the Inspector. In this it appeared that he had deleted RD1 (the Merfield/Mead site) from the land that could be built on as part of the Mendip Local Plan Part 2. If this was the case it would add weight to the Parish Council objections to the planning application, however, it did not stop the application from still being considered by Mendip.

13. Cycling and Walking: PT had been in contact with Frome on their proposal but this still had to be costed. Support for it had come from Rode, Beckington and Rudge amongst others.

EB said that the path 13/1 would require a formal diversion to go through the Church Farm site, this would need to be applied for.

14. Police Beat Manager: The Beat Managers had been informed over concerns raised about people driving to Rode (and Tellisford) and then doing the 'Tellisford loop'. This was to be monitored as being contrary to current Covid19 guidelines.

15. Financial matters:

i) The Clerk reported that he had now submitted (electronically) forms to add EB and MS as signatories to the NatWest bank account. He awaited approval.

ii) The current financial expenditure was noted, with significant extra outgoings this year. The precept for 2021/2022 of £19,000 had been applied for.

iii) The following payments were agreed:

SALC training (Code of Conduct)	£50.00
Clerk salary	£220.82
HMRC PAYE	£55.00
Peter Travis (Zoom subscription)	£14.39

17. Other items:

Bath transport consultation: PT said he had recently joined a virtual meeting on Bath's new transport plans and he said that it was important for Rode along with Beckington, Norton St Philip and Frome to comment on the consultation as Bath were looking to set targets up to 2030 for travel to and within Bath. Proposals were for a marked drop in single occupancy car journeys, increased bus (and train) use, walking and cycling.

The Meeting closed at 10.05 pm.

Signed _____

Date: _____ Print: _____

Date of Next Meeting (virtual via Zoom):

Tuesday 2nd March 2021 at **7.30 pm**

Website: rodeparishcouncil.webs.com

Parish Council Meeting Minutes

MINUTES OF VIRTUAL (via ZOOM) SPECIAL MEETING OF
RODE PARISH COUNCIL HELD ON TUESDAY 9TH FEBRUARY 2021
AT 7.30pm

UNCONFIRMED

Present:

Cllr Peter Travis – Chair (PT), Cllr Ann Edney (AE), Cllr Pat Restorick (PR),
Cllr Elaine Butler (EB), Cllr Jim McAuliffe (JM), Cllr Mike Salmon (MS),
Cllr Steve Eyles (SE)

In attendance: Cllr Barbi Lund, Cllr Linda Oliver, Hugh Williams – Clerk,
Andy Fussell (landowner), Simon Steele-Perkins (Waddeton Park) and 25
members of the public

Report back on issues raised on 2021/0071/OTS

Andy Fussell (AF) said the affordable houses could be protected as such through a ‘deed of variation’ to ensure they were offered first to local people. This had been done on the Church Farm site. This deed would be agreed between the Developer and Mendip. He added that a scheme such as one through ‘Wombat’ could be put in place to ensure Brown’s Ground created an income – this scheme planted willow trees for harvesting to be used for cricket bat manufacture. PT said he had received this information but as the quotation had been marked ‘strictly confidential’ he had not been able to circulate it, but he had sent Councillors the top line of the financial information and had offered to show the letter to any Councillor that asked to see it.

Simon Steele-Perkins (SSP) said the planning application now had the aim of achieving the highest energy standard (EPC: A) with heat pumps, solar panels, electric charging points for cars etc. all being required. However, he said the application was only outline and therefore unable to specify the final layout/design of the 49 dwellings. This approach of an outline planning application had been used on the Church Farm development and there was confidence Autograph, or similar developer, would develop the site close to the currently proposed layout.

The garden sizes were ‘above average’ for the properties but would again be subject to reserved matters. It was acknowledged that a thorough heritage assessment had not been carried out on Barbara’s Field as geophysics had not been possible due to its ploughed state. A survey, along with trial trenches would be carried out in the next couple of months. However, Somerset County Council had considered the current assessment adequate.

Parish Council Meeting Minutes

Questions

Further questions were put to AF and SSP; MS said that as none of the 'affordable' housing on the Church Farm estate had gone to local residents or to people in Mendip; therefore, was there a need for it here, perhaps the development was too large and therefore generating too many 'affordable houses'. SSP said that Mendip required 30% of any development to be 'affordable' housing but people saw housing in Rode as still too expensive, so, maybe further discounts were required for the sale or rent of these types of property. MS also questioned the location of the development for 'older' people as it was some distance from the village centre.

JM questioned the assertion from SSP and AF that there was strong local support for this development as to date all the 60+ responses on the Mendip Planning Portal were against this development. In response it was suggested that those supporting the development were reluctant to come forward. AF added that there was support for the donation of Brown's Ground to the village for perpetuity. JM asked whether Brown's Ground would be prepared prior to donation, i.e., trees planted, paths installed, water put in for allotments. AF said he hoped this could be done by the developer and it could be put into the S106; but the PC would need to decide what they wanted on the field for inclusion in the S106. He added he would cut the grass and hedges around the field.

AF and SSP left the meeting.

Parish Council Decision

PT said that following the two previous meetings and this meeting he felt the PC was in a position to make up its mind whether to approve or reject this application.

MS said he felt the development was disproportionately large and access to the site was far from ideal, with the transport assessment poorly researched. He felt neither AF nor SSP had justified the need for this development in Rode.

AE said she had seen many changes in the village over her life and thought the donation of Brown's Ground could be a millstone for the PC. Significant green space had been given to the Playing Field Committee and the need for more was questioned. Also land for allotments, although needed, would not satisfy the new demand generated from this development. The development was too large for the village and she could not support it.

JM said that Rode PC had recently declared a climate emergency and this development would go against this declaration. Rode had poor public transport and all these houses would generate extra car journeys to get to work/shop etc. He said with many business closures there were now significant brown field site available for development in towns and cities. He said many of the issues arising

Parish Council Meeting Minutes

from the Merfield/Mead development were the same here and reflecting the parishioners' views he would oppose this development.

PT said that many Councillors joined the PC over the years to fight development but unfortunately development had taken place on Bradford Road, Walnut Close, Fairfield etc. all being on what was greenfield sites; even with the PC rejecting them. House numbers had risen from 300 in 1960 to 400 in 2000 and up to 500 in 2020, with proposed developments this could reach 600 well before 2030. He had considered favouring one of the current two applications (Merfield vs Barbara's) in the hope that if one got approved the other wouldn't. However even with the possible benefit of gaining Brown's Ground, he felt the parishioners' views should be followed and this application rejected.

PR said she had seen a lot of development and was not against small scale building but thought there was not a need for this large development. The development would generate increased traffic within the village. Already the playing field committee found it difficult to get members so problems could be foreseen getting people to manage Brown's Ground. Reflecting parishioners' views she would vote against the application.

The Parish Council voted 5-0 against the application (2021/0071/OTS), EB was unable to comment or vote due to loss of internet connection. SE (and AP) could not comment or vote due to disclosable pecuniary interest in the application.

PT suggested that, although a good transport assessment done through a resident had been prepared, Patrick Moss should be approached to gather current data together as part of the PC response. This was supported by members of the PC, with an estimated cost of £1,000.

Parishioners were asked not to send any further comments on the application to the Parish Council but to send them to Mendip who would consider all the comments and make its decision on the application. The Parish Council could not forward any comments sent to it to Mendip, as these needed to be sent directly to Mendip (quoting the planning reference). The deadline for commenting was 9th March. The PC would be finalising its comments at its next full meeting on 2nd March.

The meeting closed at 9.00pm

Signed:

Date:

Print:

Website: rodeparishcouncil.webs.com

...and finally

WHERE IN HARDINGTON VALE?

Where, in Hardington Vale, would you see this milestone? Did you recognise the view in last month's photograph? It was of St Lawrence Church from Parkgate Lane.



If you have a photograph of a part of Hardington Vale that you would like us to feature, email it to link@rodevillage.com, or drop it into 30 High Street, Rode with the location.

Sudoku

	8			4	7	2	5	
				1			3	
	3			2	6	7	1	
	7				9	5		
			7					6
9	2							
5		6						
			1					7
	1				4	8		

Last month's Sudoku

7	6	9	5	8	1	2	3	4
2	5	8	4	3	9	7	6	1
3	1	4	7	2	6	5	8	9
6	7	1	2	5	4	8	9	3
9	2	5	3	1	8	6	4	7
4	8	3	9	6	7	1	2	5
8	9	7	1	4	2	3	5	6
5	4	2	6	7	3	9	1	8
1	3	6	8	9	5	4	7	2

POEM OF THE MONTH

"The year's at the spring
 And day's at the morn;
 Morning's at seven
 The hillside's dew-pearled;
 The lark's on the wing;
 The snail's on the thorn;
 God's in His heaven -
 All's right with the world!"

Robert Browning



THOMAS & ELLIS

Chartered Certified Accountants

A local family practice helping businesses
and individuals for over 30 years

Contact Jo Ellis on:

01225 862259 or joanna@thomasandellis.co.uk

ACCA

www.thomasandellis.co.uk

MATTHEW'S MOWING & MORE

Mowing, Strimming, Weeding,
Sweeping Up, Garden Clearance and
more.

All jobs considered, competitive rates,
public liability insurance covered.

Please give me a call

07972 344720



PROPERTY & BUILDING MAINTENANCE

M Stock

01373 672090

or 07801 355384

I can give you a free estimate &
I have over 30 years experience

Painting inside & out
and general decorating

Path laying, wall & patio building

Brick & Stonework

Re-pointing work

Roofing

Fencing: Chain link, wooden or panel

Garden Maintenance

£5 million public liability insurance

GREEN MAN



Professional
Eco-friendly
Carpet,
Rug, Hard Floor,
& Upholstery
Cleaning



FROME: 01373 470416

www.greenmancleaning.co.uk



ELECTEC



electrical and technical services

- Domestic and commercial work
- Local electrician
- Homeowner electrical installation condition reports for home or rental (EICR)
- Rewire, upgrade or bespoke
- Maintenance, adapt or fix
- A company that strives to corroborate



[E jeremy@electec.co.uk](mailto:jeremy@electec.co.uk)

[T 07834 830591](tel:07834830591)

[C www.electec.co.uk](http://www.electec.co.uk)



Sharon's Foot Clinic



**S.A.C Dip FHPT S.A.C Dip FHPP
Fully Insured and Highly Trained**

For The Professional Treatment Of:

**Corns • Callus • Cracked Heels • Athletes Foot
Fungal Infections • Thickened Nails • In growing Nails
Diabetic Foot Care • Verrucas • Nail Cutting • Nail Reconstruction**

Contact Sharon on 01373 836734 or 07728 200402

Clinic Appointments at 12 Sunny Hill Nunney BA11 4ND

Home Visits also Available.

GARAGE DOOR & PRE-FABRICATED BUILDING SPECIALISTS

WE'LL RECOMMEND A SOLUTION THAT SUITS YOU, NOT US

That means we listen to your **needs**, take on board your **wants** and, very importantly, take into account your **budget**. We can then advise you on the best way to go; whether that be a complete bespoke garage, top of the range automated door, a basic up and over or simply a repair.

So with direct access to the top manufacturers, a huge stock of spare parts for all makes and our own teams of experienced engineers, you can be assured of the result you want.

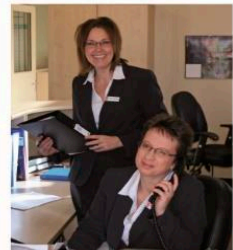
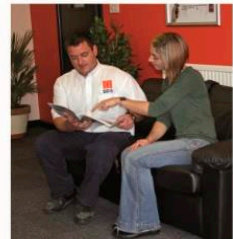
Trading Standards Approved Trader



Call Debbie or Tracey on **01373 580298**
Showroom: Radstock Rd, Midsomer Norton, BA3 2AD
www.sdsgaragedoors.co.uk

SDS
Secure Door Services

For details of our pre-fab buildings please visit: www.sdsconcretegarages.co.uk



Wash'd Up Crocks

Whatever your event,
large or small, I can supply

**Crockery, Cutlery, Glassware,
Linen and Vintage Crockery**

With reasonable rates
and **NO** washing up - it pays to hire
Delivery/Collection service available

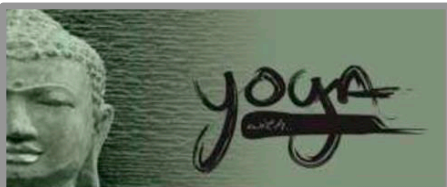
For a quotation contact Helen Shorten

Office - 01373 830141

Mobile - 07746410401

Email - info@washedupcrocks.co.uk

www.washedupcrocks.co.uk



Yoga classes with Stephanie
in Rode village

Friday mornings 9.30 – 10.45am
Rode Chapel

&
Regular Workshops
throughout the year

Experienced teacher
Friendly and down to earth classes
All levels welcome
Mats provided

yogawithstephanieharrison@gmail.com
07780 601381

www.facebook.com/yogawithstephanieharrison

Coffee with an Architect?

Thinking about a project?

An Architect with over 20 years' experience and a genuine love of historic buildings and coffee, I would be happy to meet and discuss your plans and ideas.

For a free initial chat please contact:

Anna Hammond BA DipArch MSc ARB

e: annahammond@gmail.com

m: 0772 941 1360 t: 01373 834439





24/7 Personal service from a family of Independent Funeral Directors

Proud to have served our community for over 20 years

Golden Leaves Guaranteed Plans available

Cote House, 51 Timbrell Street, Trowbridge, BA14 8PN Telephone 01225 775259

16 Warminster Road, Westbury, BA13 3PB Telephone 01373 864944

www.elizabethsnell.co.uk

info@elizabethsnell.co.uk

BECKINGTON PHYSIOTHERAPY PRACTICE

**Has relocated, come and see us at our new address:
Shawford Farm (A36), Beckington, BA11 6SQ**

Keep active with Physiotherapy

Lesley Fussell MCSP, SRP, AACP

With over 30 years of experience specialising in treatment
of muscle and joint problems including:
Back and neck pain - Work and posture related disorders -
Sports injuries - Arthritic conditions -
Joint & muscle problems following accidents and surgery. -

Home visits can be arranged.

Telephone: 01373 831483

Email: lfussellphysio@gmail.com



Julia Robb
Gardener

Reliable,
hardworking
& passionate RHS
qualified gardener,
based in Rode

Seasonal tidy ups and tasks – regular
maintenance – overgrown garden
clearance – pruning – design and
planting and more

For your free initial consultation
contact Julia: 07527 918314 or
juliarobb@hotmail.co.uk

PHYSIOTHERAPY & ACUPUNCTURE in Rode

Merete Bates MCSP, SRP

Japonica Clinic
The High Street

07734058025

www.japonicaclinic.com
info@japonicaclinic.com



SEYMOURS COURT

**Bed & Breakfast and
Wedding Reception
Venue in Beckington**

A marquee venue for
your special day
or stay with us in our
luxury accommodation

Contact:
01373 830466
or 07712 580586
info@seymourscourt.co.uk
www.seymourscourt.co.uk

Village Window Valet



Are you looking for a
window cleaner?
Call Adam for a
fast & reliable quote

☎ **01373 830877**
☎ **07801 151207**
✉ dumbcara@hotmail.com

Adam Figiel, 2 Green Park, Church Lane, Rode, Nr Bath Somerset

**WINDOW, CONSERVATORY, FASCIA
& GUTTER CLEANING SERVICES**



FROME AREA BUILDING SUPPLIES LTD

01373 831550 www.fromeareabuildingsupplies.com

A truly independent supplier of building and DIY materials for any project around the home or for any building projects

Stocking over 3000 products... Timber, Plumbing, Drainage, Landscaping, Construction, Electrical, Decorating and much, much more

Located just outside Rode off the A361

We offer a free delivery service in the local area

Come and pay us a visit or take a look at our website featuring many of our products



FROME AREA BUILDING SUPPLIES LTD

01373 831550 www.fromeareabuildingsupplies.com

LEOZAMP & CO

1 LANGHAM PLACE, RODE

T: 01373 830233

**For all your electrical requirements.
Rewiring, Repairs, Sales & Public Address,
Intruder Alarm Systems.**



**For domestic appliance repairs call:
Domesticare 01373 467351**

Brian Brewer

Carpet & Upholstery Cleaning Specialist

Est. 2002

Carpets

Rugs

Sofa's

Mattresses

Commercial & Domestic

Spot Cleaning

Stain Removal

Stain Protection

Flea Treatments

Fully Insured



26 Grove Mead, Frome, Somerset BA11 4BU

Tel: 01373 300642 | Mobile: 07866 433365

Email: brewer.brewer54@gmail.com



Beckington Motors
Keeping you *on the road* since 1960



- Local friendly garage
- Air conditioning
- MOTs and servicing
- Tyres, batteries and exhausts
- Vehicle diagnostics
-  Specialist Land Rover diagnostics
- 4 wheel laser alignment
- Range of courtesy cars
- Recovery service
- Fully qualified technicians
-  Calor Gas supplier

Bath Road, Beckington BA11 6SW | 01373 830238 | www.beckingtonmotors.co.uk
Opening hours: Mon-Fri 8am-5:30pm, Sat 8:30am-12:30pm |  Find us on Facebook



Art Classes in Rode at Jan's Kitchen Table – tuition for catching the imagination

At Jan's Kitchen Table the tailor-made tuition is all about you, your individuality, discovering your imagination and having fun

Be inspired to paint, draw and illustrate with professional artist and illustrator Jan Nesbitt (BA Hons in Fine Art and a wealth of experience!)

Mondays and Tuesdays 10am to 1pm £16 per session
– discounts for advance bookings
Friday evenings 7pm to 9pm £10 per session
Tel: 01373 830941 email: jan@jannesbittartwork.com
www.jannesbittartwork.com



Dog Grooming Parlour

*FOR A GENTLE AND
FRIENDLY SERVICE*

call Julie on
01373 859930

22 YEARS EXPERIENCE

Handyman Services home & garden maintenance

for all your home improvements
and repairs inside and out.
decorating~carpentry~plumbing
tiling~flat pack~gardening~ponds
decking~sheds~fencing and more.

call Gary.

07747 771016

01373 859930

handyman-services-gary@outlook.com

Nashblend Limited trading as:

West Country Tiling Company

Pitched Roofing, Lead Work, Timber Treatment.
Conservation work is our speciality.

Tel: 01373 462224

S. A. M. SCAFFOLD

Safety and Maintenance Scaffold,
We can meet all your scaffold requirements.

Tel: 01373 461511

Loose covers and curtains

Individually made to
suit your requirements

Free estimates

Sue Hocking
01225 865706

email:
sue.hocking@talktalk.net



CARPENTER AND JOINER
Martin Hale

Professional Carpentry Services
Custom Made Joinery
All Interior & exterior work
Renovation & Maintenance
Period properties a pleasure

City & Guilds Qualified

Quality service, free estimates

North Bradley
01225 762495
Mobile: 07768 838757
Email: Martin.hale27@gmail.com



BEWLEY
Funeral Directors Limited

Our family are here for your family



3rd generation family business since 1970 providing Simple to fully Bespoke Funerals. Our friendly team offer home visits helping you & your family with all necessary support and guidance. For 24 hr service call

Tel. 01225 353525
Manvers St. Trowbridge
www.bewleyfunerals.com



Registered Member of The British Association of Foot Health Professionals

Foot Health Professional
Kirsten Penny MCFHP MAFHP

Home Visiting Practice

Corns • Hardskin • Thick Nails
• Ingrowing Toenails
and much more

Why Suffer?

Call 07761 180819
for an appointment
(Frome and surrounding areas)

For all your Foot Care Needs

garston
VETERINARY GROUP



Not all veterinary practices are the same

We are available to care for your pets, horses and animals 24/7

If your pet is overnight with us, they are never left alone

Garston vets - a truly independent approach to animal care for over 100 years.



Frome
01373 452225

Melksham
01225 617779

Trowbridge
01225 754021

Warminster
01985 213350

Westbury
01373 301448



www.garstonvets.co.uk



**EXPERIENCED
LOCAL
HANDYMAN
NO JOB TOO SMALL
SHELVING, SHUTTERS,
FLOORING, WINDOWS
AND DOORS REPAIRED
OR PURPOSE MADE.
FLAT PACKS ASSEMBLED.**

**Call Peter Stratford on
01373 831260 or
07870 453597**

Woodland Carpentry

- * Fitted Kitchens
- * Worktops
- * Bedroom Furniture
- * Stud Partitions
- * Door Linings
- * Doors Hung
- * Skirting Boards

And much more, just ask

Call Kevin Page

on 01373 462008

or 07944 109397

HOLISTIC TREATMENTS

Available in the centre of Rode

Massage • Organic Facials •
Bach Flower Therapy •
Ear Candling



Celia Stewart
07761-016521
massage.bach@gmail.com
www.bathholistic.co.uk



**House
proud**
of Rode

Home Improvements
For all those jobs that make a house a
home

- Carpentry, cabinet making, shelving,
wooden flooring
- Furniture Restoration
- Interior/Exterior Decorating
- Bathrooms & Kitchens
- Gardens – patios & decking
- General Maintenance & DIY

Contact David Griffiths
Mobile 07732 280940
Home 01373 830366

Do you need a
Plumber? Call



PAUL ANTELL PLUMBING

07890 366832
01373 467427

Professional, Reliable, Friendly & Local
paulantellplumbing@talktalk.net
www.paulantellplumbing.co.uk

Pelican Plumbing



Trusted and reliable local plumber. For bathroom installations, leaks, new taps, toilets and plumbing maintenance covering Bath and surrounding villages. call Simon Preston.

01373834991 or 07982051869
simon@pelicanplumbing.co.uk

PLANS FOR EXTENSIONS

- Plans prepared for Planning Listed Building and Building Regulation applications
- We have over 35 years experience and are able to give good professional advice

For free initial consultation please contact:

IAN SING

MRICS MASI MCIQB MCIAT

ian@iarnner-sing.com

01373 830836 / 07783345541

Martin's Chimney Services



Professionally trained to sweep all types of chimneys and appliances

Fully insured, offering a tidy, clean and efficient service

Bird guards supplied and fitted

Insurance approved certificates issued

NACS Member

Tel: 01225 768969 / 07909 078500

Email: martinschimney@hotmail.com

www.martinschimneyservices.co.uk

Jeremy Young, M.A., M.Th.

*Systemic Family Therapist/
E.M.D.R. Practitioner
U.K.C.P. Registered*



Anne Young, M.Phil.

*Jungian Analyst/
Psychotherapist/ Supervisor
U.K.C.P. Registered*

Individual, Couple and Family Counselling/Psychotherapy
for

Personal and Relationship Difficulties, including Depression, Stress, Psychosomatic Disorders, Bereavement, Anxiety/Panic Attacks, Self-Harm, Abuse, Low Self-Esteem, Mid-Life Crisis, Loss of Meaning, Poor Communication, Couples' Issues, Family Feuds, E.M.D.R. for Trauma and Phobia

Please ring 01373 831349 for more information

WESTERLEY HOUSE, TELLISFORD, NR. RODE, BATH BA2 7RL



Downlands Tree Surgery

Expert Tree Care

- Skilled Pruning
- Precision Tree Removal
- Tree Stump Removal
- Qualified & Insured
- Mechanical Shrub Clearance
- Immaculate Clear Up

For tree advice and a prompt quotation
Telephone Jon Burgess

01373 430175

Need help keeping up with today's digital world ? Fed up with feeling frustrated, baffled or confused ?

"Kathryn has been supporting people and their tech gadgets for years, understanding the frustrations and confusion these can cause. Her skills in IT enable her to clearly explain and implement tech in everyday life to make things easier, for business and personal use or just fun.

Keeping in touch with how things change but always keeping it real and relevant."



Get confident and competent at using your tech with:

- one-to-one customized tuition
- expert technical support
- friendly affordable advice
- helpful purchasing guidance

Kathryn Price 07427 104249

kathryn@ksptechcare.co.uk



 **KSP**
TechCare

GIFT certificates available

£25 per hour support
(valid for 6 months)

Find out how YOUR tech can make life easier for YOU ...



Botox and Injectables, Rode

Private clinic in Rode offering Botox and facial fillers. All procedures carried out by Dr Abby Burgess, an experienced NHS GP. Personal service of creating a fresh, more youthful, look.

Contact Dr Burgess for an initial appointment to discuss your needs.

Email monkleyaesthetics@gmail.com

Website www.monkleyaesthetics.co.uk

Tel/Text 07922 955176



Find Monkley Aesthetics on Instagram and Facebook

CABIN WORKS

One stop shop - Design - Planning - Supply - Build



- Add property value
- Fully insulated & installed
- 4m x 3m (wide range of sizes available)
- Electrics
- Large range of styles & finishes
- Options include internal fit-out
- office@cabinworks.co.uk
- Graham: 07768020204

EVER THOUGHT OF A HOME OFFICE IN YOUR GARDEN?

SANDRA DEMAR

PAINTER AND DECORATOR

Established 2002

References/DRB

Free Estimates/Fair Prices

Colour and Design Advice

M: 07709 566336

E: sandra002336@gmail.com

Hardington Vale Parish **CHURCH SERVICES**



STOP PRESS!

7 March - whole parish back in St Lawrence church, Rode**

14 March - whole parish St Philip and St James, NSP**

21 March - whole parish in St Lawrence church, Rode**

Sunday 28 March – Palm Sunday - in St Philip and St James, NSP **

*** NB numbers are limited, and social distancing must be fully observed.*

Recordings from these services will be released as soon as possible afterwards.

Monday 29 March – Thursday 1 April – Holy Week

pre-recorded compline meditations available on website

1 April – Maundy Thursday - Passover meal - on Zoom

2 April Good Friday – an hour at the cross

either pre-recorded, or in St Philip and St James, NSP

4 April - Easter Sunday

- in village churches ***ticketed AND pre-recorded/live streamed

For the most up-to-date details please go to our home page on

hardingtonvale.org.uk

or to our Facebook page <https://www.facebook.com/hardington.vale.parish/>



If you have any queries, please contact Caroline, the Rector 01373 834258.

MARCH 2021 DIARY & 2021 YEAR PLANNER

Tue Mar XX	7.30pm Rode Parish Council Monthly Meeting via Zoom
Mon Mar 8	7.00pm Rode & District Gardening Club AGM via Zoom
Sun Mar 14	Mothering Sunday
Mon Mar 22	APRIL LINK COPY DEADLINE 11am-12pm Mobile Library, Memorial Hall
Sun Mar 28	1am British Summer Time change - clocks go forward 1 hour
Wed Mar 31	Rode Playing Field Draw see page 7 for info.
Fri Apr 2	BANK HOLIDAY – Good Friday
Sun Apr 4	Easter Sunday
Mon Apr 5	BANK HOLIDAY – Easter Monday
Mon 3 May	BANK HOLIDAY – Early Spring Bank Holiday
Mon 31 May	BANK HOLIDAY – Spring Bank Holiday
Sun 20 Jun	Father's Day

Somerset Waste Partnership		Mar 2021				
Mon	Tue	Wed	Thu	Fri	Sat	
1	2	3	4	5	6	
8	9	10	11	12	13	
15	16	17	18	19	20	
22	23	24	25	26	27	
29	30	31				

REFUSE
 RECYCLING
 GARDEN

Please send copy for the April 2021 issue of 'The Link'
via email to gillhleonard@aol.com or deliver to 1 Lower Street, Rode BA11 6PU
latest Monday 22nd March 2021.

The Link is published by Hardington Vale PCC, which reserves the right to edit any material submitted for publication. Opinions expressed are not necessarily those of the Clergy or PCC.

OSBORNE'S HARDWOOD LOGS



Hardwood logs sold by the load at £90 delivered or £5 per bag

We also sell kindling!

Please call James on 07773 280939 or 01373 830571