

# The Link

The magazine for Rode, Tellisford, Woolverton and  
Farleigh Hungerford, part of Hardington Vale



**JUNE 2021**

Urgent Need For Volunteers – Scouts & Poppy Appeal

-----  
Parish Magazine Excerpts From 100 Years Ago

-----  
More Parish Events!!

-----  
Parish AGM Minutes & Reports – An Eventful Year

-----  
**...and so very much more local news and info inside!**

**£1**

## PARISH OF HARDINGTON VALE

### RECTOR

Rev Caroline Walker  
The Rectory, Vicarage Lane,  
Norton St Philip, BA2 7LY  
01373 834258  
carolinehwalker@btinternet.com  
Day off:- Friday

### RURAL PIONEER

Rev Alex Holmes  
Old Rectory, 38 Church Lane, Rode  
01373 834643  
revalexholmes@gmail.com

### CURATE

Rev Jo Robinson  
3 Manor Barn, Norton St Philip  
01373 830647  
321jorobinson@gmail.com

### READERS

Barbara Day  
Brewery House, North Street, NSP  
01373 834438  
Barbara.day04@gmail.com

Michael Harrison  
51 Fortescue Street, NSP  
01373 834086  
michael.harrison@bcs.org

### PARISH ADMINISTRATOR

Ros Clarke  
The Hub Office, Norton St Philip Church  
Mon, Tues and Wed 8.30am to 12.30pm  
01373 834488  
admin@hardingtonvale.org.uk

### PCC TREASURER

Nick Brown  
Norton St Philip Church BA2 7LY  
01373-834488  
Treasurer@hardingtonvale.org.uk

### PCC SECRETARY

Tony Day  
Brewery House, North St. BA2 7LE  
01373-834438  
secretary@hardingtonvale.org.uk

### ELECTORAL ROLL OFFICER

Ros Clarke

### PARISH WARDENS

(with specific responsibilities in brackets)  
David Lockley (pastoral&outreach) 01373 834414  
Christopher Todd (strategy) 01373-834856  
Geoff Banwell (finance) 01373 831139  
Chris Cloke (buildings) 01373 834917

### CHAPEL WARDEN

**Farleigh Hungerford:**  
Guy Hungerford 01249 701211  
**Tellisford:**  
Rachel Fielden 01373 830322

### DEPUTY WARDEN

**Rode:**  
Sally Pickett 01373 831796

### ELECTED PCC MEMBERS

Andrew Morrison <sup>1</sup>, Barbara Day <sup>1</sup>, Robin Finlay, <sup>1</sup>  
Sharman Flindall <sup>1</sup>, Andy Filkins, Susie Filkins,  
Rachel Feilden <sup>3</sup>, John Flindall, Francis Green <sup>4</sup>,  
Rachel Stewart, Anne Harkness, Ros Lockley,  
Sally Pickett <sup>3</sup>, Michael Walker  
<sup>1</sup> Deanery Synod Representatives  
<sup>2</sup> Safeguarding Officer currently vacant  
<sup>3</sup> Chapel or Deputy wardens at Farleigh  
Hungerford, Rode and Tellisford.  
<sup>4</sup> with specific responsibility for Hemington  
churchyard

### CHILDRENS' AND FAMILIES WORKER

Sue Rodford (kidschurch@hardingtonvale.org.uk)

**The Link Magazine** : is published by the  
Parochial Church Council which reserves the right  
to edit any material submitted for publication.  
Opinions expressed are not necessarily those of  
the PCC, the Rector or the Editor.

### EDITOR

Gill Leonard edits and produces The Link  
01373 831072 link@rodevillage.com

### Advertising

Gill Leonard  
01373 831072 gillhleonard@aol.com

### Subscriptions/Distribution

Caroline Williams  
01373 046 link@rodevillage.com

### HARDINGTON VALE WEBSITE

www.hardingtonvale.org.uk

Hemington and Hardington are in the care of the  
Churches Conservation Trust contact Helen  
Booker hbooker@thecc.org.uk 07831 873489

### RODE CHAPEL METHODIST- BAPTIST

**Minister:** Rev Tina Swire 01749 595759  
**Secretary:** Bill Jackson 01373 830411  
rode.chapel@btinternet.com  
**Key Holder:** Alison Hughes 01373 830244  
rode.chapel@btinternet.com /830411

## USEFUL COMMUNITY CONTACT DETAILS

Organisation	Contact Name	Contact Number
Allotments - Rode Rode Gardens Association	Lucy Travis (Chair)	831726/Lucy_travis@hotmail.com
Buddy Scheme (Rode)	Mike Salmon	831257/mikesalmon123@icloud.com
Community Speed Watch (CSW)	Malcolm Wood	830301/mwood17@uwclub.net
Crickets Club (NSP) Youth & Seniors	Mark Finch	07876 191100
Friends of Rode and Norton Schools (FRANS)	Brandon Quentin-Hicks (Joint Chair)	brandon@bambooohouse.co.uk 07867 545720
Gardening: Rode & District Club	Averil Morrow	830686/averil.morrow@yahoo.co.uk
Ladies Group (Rode)	Pat Banwell	831139
Lunch Club (Over 60's)	Alex Sing	Asing_homeandgardens@hotmail.com/830836
Memorial Hall (Rode)	Bookings: Kate Robinson	rodehall@bananasoft.net eves only 830202 www.rodevillagehall.co.uk
NSP Pre-School	Dawn Strand	admin@nortonpreschool.co.uk/834791
Old School Room Farleigh Hungerford	Dilys McKechnie	01225 754925
Over 60's	Pat Smith	830559
Parish Council - Rode	Hugh Williams (Parish Clerk)	Clerk.rodeparishcouncil@gmail.com rodeparishcouncil.webs.com
Parish Paths Liaison Officer	Caro Smith	caro.a.smith@gmail.com/830911
Playing Field/Pavilion (Rode)	Bookings: Chair: Nigel Clarke	rodepfbookings@gmail.com biz.nibex@btinternet.com
Post Office (Rode)	Demi Ward	830321
RANS Running & Walking Club www.facebook.com/TeamRANS	Brandon Quentin-Hicks	brandon@bambooohouse.co.uk 07867 545720
Rode & NSP First School Federation	Headteacher: Georgina Muxworthy	830523
Rodevillage.com Website & Twitter Feed	George Berry	info@rodevillage.com http://twitter.com/rodevillage
1 <sup>st</sup> Rode Scout Group Beavers Wed 6-6pm/Cubs Thu 6- 7.30pm/Scouts Mon 7-8.30pm During school term time	Group Scout Leader: Howard Russell	hdrussello1@gmail.com 830640/07736 739680
Scouts Edor Explorer Unit Every other Tuesday in term time	Marcus Bradshaw	explorers@rodevillage.com/07713 165312
Village Agent	Nic Edwards	07946 461468/ nicolae@somersetccc.org.uk
Walking Group	Liz Dinnis	elizabethdinnis49@gmail.com/07788 656337
Community Transport & Local Government & Closest GP		
Community Transport	Mendip Community Slinky Bus Bookings Frome Community Cars	01749 880613/www.menfopcommunitytransport.co.uk 01749 880482 07596 591391
Mendip D C	General Enquiries	0300 303 8588
Somerset C C	General Enquiries	0300 123 2224
County Councillor	Linda Oliver (Conservative)	loliver@somerset.gov.uk/834210
District Councillor	Barbi Lund (Green Party)	Clr.lund@mendip.gov.uk/07846 335636
Beckington Family Practice	Appointments T: 830006 Results 9.30-13.00/14.00-16.00 T: 867986	Enquiries and Emergencies T: 830316 Dispensary 8.30-13.00/15.00-18.30 T: 867987
NHS 111 24 hour medical care help	Contact if you have an urgent	medical problem and you are unsure what to do T: 111/Online: 111.nhs.co.uk
Frome Rural Beat Neighbourhood Police Team	PCSO 9011 Russell Ford PCAO 9800 John McNally Beat Mgr PC 2673 David Cohen	Russell.ford@avonandsomerset.police.uk/07547658018 John.mcnally@avonandsomerset.police.uk David.Cohen@avonandsomerset.police.uk

# Church Reflection & News

## REFLECTION - ENTERTAINING ANGELS

I arrived in this parish on the 10 June 2020 — exactly a year ago! Now as we look forward to an end to covid restrictions it looks like I will finally get a chance to see what ‘normal’ parish ministry looks like! One of the things I’m looking forward to most is visiting people in their homes and inviting them into mine.



At Easter we had a *Journey to Hope* in St Philip and St James church with scenes from Jesus’ last week on earth. I met a woman outside the church who had just visited the display and she told me how she had been moved by the prayer station showing the Last Supper. She choked up as she told me that during this lockdown, she had really missed having people into her home and eating with friends and family.

Hospitality is at the core of the Christian faith. At the beginning of the Bible, we read that God created the beautiful garden of Eden, providing an abundance of vegetation for food. In the New Testament we learn that Jesus loved parties — turning water into wine at a wedding and providing a bread and fish picnic for 5000 people! We see him eating in the homes of people with dubious reputations, which was shocking as in that time and culture it meant that you had a relationship with them. The last thing Jesus did before he died was to eat the Last Supper, telling his disciples how he had ‘eagerly longed’ to eat this meal with them.

On the 26 June I will be getting ordained as a priest at Wells Cathedral and the following day, on Sunday 27 June I will have the amazing privilege to lead my first communion in church. During this past year opportunities to share communion together have been restricted, and so it feels really significant that I will lead my first communion the first Sunday after lockdown is finally lifted. Christian hospitality is centred around the communion table, but it also reaches out to those on the edges.

The Latin noun “hospes” which means “host”, “guest” or “stranger” is the root word for the English word “hospital.” Our health service, that we have been so grateful for during this pandemic, has its roots in the Christian value of hospitality. According to Wikipedia, public hospitals in the west did not exist until the Christian period and the first hospital for ordinary people was set up in the fourth century by St Basil of Caesarea in the eastern Byzantine Empire. St Bartholomew’s (St Barts) in London was the first hospital in the UK and was set up by Rahere in 1123, on his return from a pilgrimage to Rome. Rahere was a wealthy courtier, a favourite of Henry I, but he spent his money in establishing a hospital for the poor.

# Church Reflection & News

One of Jesus' parables tells of a man who throws a banquet and invites all his friends but they refuse to come and so the host invites in all the poor and needy instead. I expect most of us are eagerly longing to eat meals again with our loved ones, but as we remember the hospitality of Jesus and consider all the wonderful privileges we have – the NHS, free vaccines, the resources to enjoy meals with friends and family – I wonder if we could also offer hospitality to others? That might look like a meal or a cup of tea with someone in our community who is lonely, or it might be the gift of a vaccine or aid sent abroad. In the excitement of meeting again with friends and family let's "not forget to show hospitality to strangers, for by so doing some people have entertained angels without knowing it." (Hebrews 13:2).

*Jo Robinson*  
Curate

---

## NEWS FROM ST LAWRENCE

The eight hanging lights which illuminate the main body of the church have unfortunately reached their "use by" date. They are many decades old. One can no longer be repaired and we have made the decision that the only sensible thing to do is replace all of them. We have sourced some appropriate globe pendant lights on the internet and the total costs, including fitting, are a little over £125 per light.



It would be much appreciated if we could have 8 sponsors at £100 (plus £25 gift aid) towards this cost. If you would like to be a sponsor, please either let one of us have a cheque payable to Hardington Vale PCC in the sum of £100 or pay Hardington Vale PCC directly (Sort code: 60-23-06 Account No: 31003060) by BACS with the reference "Rode's new lights" and let one of us know that you have done so.

Only two Communion Services were planned for St Lawrence during May with outdoor Communion Services planned on alternate Sundays in the churchyard at Norton St Phillip (whilst works are undertaken inside the church). With the rather wet weather which we have experienced during May the outdoor services have moved indoors to St Lawrence, so we have been delighted to welcome a congregation from across the parish to worship in Rode every Sunday in May so far. Social distancing has been maintained whilst accommodating a good number of people. Hopefully as restrictions gradually ease we may be able to ease restrictions in church too, we will keep you informed.

*Sally Pickett and Geoff Banwell*

# Parish News

## 1<sup>ST</sup> RODE (MAJOR) SCOUT GROUP

By the time you are reading this our Beaver Section will have now have met for 3 or 4 times - only outside as it is for all Sections, but it is a start.

Our Cub Section will also have restarted but with a new Leader Esther Perkin, as Liz Osborne has decided to hang up her woggle after 18 years faithful service with us, she will be greatly missed by all the Cubs and all the Leaders. We must also welcome here Helen Evans who has stepped forward to help with Cubs from September. They will be changing nights to a Thursday.

This leaves us with a big problem!!

Esther who moved up to Cubs was running Beavers so we are now short of a Leader here to support our existing Beaver Leaders.

Our Scout Section has also restarted, but Jacqui and John Rottenbury have also decided to finish after being with us for 5 years, at the end of July. They will help in September, but only if we can get a new leadership team for Scouts. With the Scout Section we now only have 1 Leader so unless we can fill their shoes the Scout Section will close at the end of July. But we have some very good news here as Mitzi Harrington has volunteered to start with Scouts, but we cannot manage with just 2. We are now looking at changing the night here and maybe the time too in order suit and recruit more Leaders.

We must not let this seem like the end as we have been here before in the last 40 years since I have been involved and the village and parents have always come to the rescue.

We still have a wonderful set of Leaders, a Group Executive Committee for fundraising and supporting the Group, the scout hut, mini-bus and a fantastic array of equipment. Our main reason for all this is to support our young people - not just now but for generations to come, by giving them experiences of team work, self-reliance, life skills and facing new challenges, experiences that they do not get at school or with their parents and they will remember for a lifetime.

If you want to help with any of the above Sections, please do get in touch with me.

*Howard Russell*

Group Scout Leader

E: [hdrussello1@gmail.com](mailto:hdrussello1@gmail.com) T: 01373 830640 / 07736 739680



## SADLY, NO RESPONSE TO LAST MONTH'S PLEA

Last month I wrote a piece on behalf of Alan Batcheldor explaining that he has reluctantly had to resign as Rode's Poppy Appeal Organiser due to ill health.



As mentioned previously Alan has been the Rode RBL Organiser for several years and during that time he and his team have taken the totals collected to new heights.

I had hoped that this month I would be confirming who would be taking over from him but apparently no one has come forward.

This seems particularly unfortunate in this, the centenary year, of The Royal British Legion - please see page 46 for more on this.

I do hope that someone will come forward to be Rode's new Poppy Appeal Organiser before the July issue is produced and help Rode to continue to support this very worthy cause. As I said last month a replacement would also mean that Alan will not continue to worry the 2021 Rode Poppy Appeal and can concentrate on his health.

If you would like to find out more, please call (01373 831395) or email (alanbatcheldor@btinternet.com) Alan, he will be delighted to discuss what exactly is involved with you.

Hopefully this second appeal will be successful, and I will be introducing Alan's replacement successor in our next issue...

*Gill Leonard*  
Editor

---

## JUMBLE NEEDED!

For a Jumble Sale at Rode Playing Field Pavilion on July 10<sup>th</sup> at 2 pm.

If you can help with clothing, bric-a-brac etc. please get in touch.

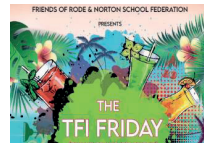
*Ann Edney and Pat Restorick*  
T: Ann 830544 or Pat 830572



# Parish News

## FRANS FUNDRAISERS

**TFI Friday - In The Park(s):** Both Rode and Norton parks are now hosting our weekly TFI (it stands for thank FRANS it's Friday in case you were wondering) Friday clubs.



Music, after school tuck shop, drinks (including grown up drinks), ice creams and cakes will be the order of the day each week at the pavilions in both parks during school terms. We've made a special request for sunshine every Friday so head on down from 3pm and start the weekend slightly earlier than you might normally do (or later in some cases).

**Get Your Ducks Lined Up!:** The weekend of July 3-4th is the planned date for the Grand Rode Duck race. The venue is being sorted at the time of going to print but we can promise it will be a familiar spot and within nice level walking distance of Rode.

Also, keep your eyes out for the chance to join in, you will be able to sponsor a duck, or ducks and have the opportunity to win prizes! We'll be posting updates on Facebook very soon! There will of course be a fully stocked 'provisions tent' at the event so even if you don't fancy sponsoring a duck you're welcome to come along for a fun day on the river!

*FRANS Team*

---

## RODE VILLAGE DAY – ON AUGUST BANK HOLIDAY

Slightly different this year... On Monday August 30<sup>th</sup> we want to celebrate the wonderful village of Rode and its businesses - who have worked hard to make this difficult time a lot easier.

It would be lovely to showcase the work everyone is doing, making preserves, cakes, crafts etc. and, of course, make them some money.



Any village organisations wanting to raise funds are welcome, please contact us for information.

We will have a bar and food and children's entertainment.

*Ann Edney and Pat Restorick*

T: Ann 830544 or Pat 830572



## RODE'S VERY OWN BOOK CONCIERGE

Once a month, on a Monday, Rode is visited by the shiny, new mobile library van.

A great choice of books and audibles awaits inside as well as the amazing Ken who knows his books!

Strike up a conversation and you could be swayed off the book you thought you were interested in - to another 'world' entirely and find yourself going home with more than one. I speak from experience!



Ken will also search for and then reserve any book that you wish and bring it to you on his next visit. He enjoys a challenge!

The mobile library is under-used at present and therefore at risk.



To use the mobile library service, you must be a member of Somerset Libraries. If you are already a member, bring your card. If you're not already a member bring some proof of your name and current address, such as a recent utility bill or a driving licence and you can join by filling in a membership form. You'll then be issued a membership card, which you can use in any Somerset library.

**Outside the village hall:** 11.25 – 12.05

**Visits on Mondays - every 4 weeks:**

14 June, 12 Jul, 9 Aug, 6 Sep, 4 Oct, 1 Nov, 29 Nov.

Do visit (remember your library card or proofs needed to join) and your mask!

Enjoy...

*Pandora Jacobs*

# Parish News

## RODE 2020/2021

- Two major planning applications
- A Climate Emergency declared
- A major village clean-up
- Appointment of a Lengthsman
- S106 land finally handed to Playing Field
- Speeding issues
- Six days of Inspector's Hearings
- A village-wide drainage survey
- Launch of Rode Hoedown
- And then... there's been Covid

### #WHATAYEAR

CHAIR'S REPORT  
ROPARDE ISH  
COUNCIL

Even if our village has largely escaped the worst of Covid, the pandemic still has impacted it. Our village hostilities couldn't allow us inside for months – converting to providing welcome and invaluable takeaways and deliveries. The Village Store dropped groceries off to “shielding” residents whilst serving others through the store window. Finally, things are hopefully returning to normal but likely a new ‘normal’. Yes, Fred still delivers papers and catches the bus into town to do his shopping but sporting a mask that sadly hides his cheery smile.

When Covid first hit, the Parish Council (PC) assisted in setting up a Rode Buddy scheme to offer help and support particularly to those ‘shielding’. Whilst demand on Rode's Buddies has not been huge, it's been good to see so many villagers ready to help others. Mike Salmon volunteered to administer the scheme and has ensured it has stayed primed and able to help when required.

A challenging year for villagers and for the PC. Because of Covid, all Parish Meetings had to be held online... or out of doors. Online access to ‘virtual’ meetings has seen unprecedented numbers joining our monthly meetings and taking part in Parishioners' Participation, especially when planning applications on an agenda... as they often have been! Monthly meetings this year have also been some of the longest PC meetings, partly because ‘Zoom’ meetings tend to result in extended discussions but the main reason being the agendas have been packed with issues and new tasks added by our proactive Parish Councillors.

Undoubtedly the biggest challenge for the village and the PC has been the 2 major planning applications: 29 houses at The Mead and 49 on Barbara's Field. The site at The Mead had been proposed by the Mendip Planning Policy team after the Government-appointed Inspector's Main Modifications to Mendip's Local Plan Part 2 had called for a further 505 houses to be built in NE Mendip. The PC took part in the subsequent 6 days of Hearings that considered these Main Modifications and we repeatedly challenged the inclusion of The Mead site. The hearings involved planners, councillors, developers and many lawyers. Rode PC (along with Beckington and Norton St Philip PCs) decided they needed to be legally represented too and together appointed D L A Piper, a top legal

## Parish News

firm, expert on the planning process, to help present our case to the Inspector. The Inspector was persuaded to view The Mead site and so saw for himself where the 29 houses were to go. The only major change the Inspector made to his Main Modifications was to take out The Mead site from the long list of sites designed to deliver his 505 houses. But that didn't result in the end of the application as the developer insisted on pursuing it further, submitting an application to Mendip Planning Board asking for its approval. So Rode PC commissioned a transport consultancy to review the application and included this evidence in a detailed 30-page objection Rode PC prepared and submitted to Mendip. Importantly, some 200+ Rode residents also objected, as did our District Councillor. The Mendip Planner subsequently reviewed the application, the reports and objections and finally recommended its 'refusal'. This may not be the end of this unwanted development - an appeal could yet be launched.

The other application is for 49 houses on Barbara's Field, another 30-page objection was prepared and submitted by Rode PC after commissioning yet another transport study. Again, Rode residents sent in their objections, as did our District Councillor. Will this opposition to another unwelcome planning application be as effective as was our opposition to The Mead? Currently we wait to see the recommendation of the Mendip planner on that application...

The fact that Rode PC had the reserves to be able to fund at short notice the appointment of legal advisers and transport consultants, to professionally represent the village interests and challenge reports provided by the developers, is testament to a policy introduced some 10 years ago by then Chair, Steve Eyles. He argued we needed to build PC cash reserves in order to counter any major future challenges the Parish might face. Our expenditure this past year has for the first time in those 10 years exceeded income, but it was necessary because it enabled us to present the village's point of view effectively and professionally... and was affordable due to the cash reserves accrued over the past decade.

Another activity these past 12 months (this will be ongoing) has been a major clean-up of the village. Initially this was orchestrated by local resident, Clive Harrington, using his vehicles, equipment and teams, subsequently we have appointed a Lengthsman and now a monthly Hoedown programme of villagers helps to keep our village tidy. As a result, the village does look so much better.

Speeding remains on the TO DO list for next year.

The PC itself faced very major challenges in the last 12 months with 3 experienced councillors opting to stand down last August, plus a new Parish Clerk still settling into his role having been appointed at the end of 2019. Pat Banwell and Terry Morrow had been part of the 4-person team that had

## Parish News

worked successfully and productively together for some 6 years when developing Rode's Neighbourhood Plan. Pat had also served as Vice Chair for many years and Terry had overseen the review of all Rode's planning applications. In May 2018, they had both been appointed Joint Chairs, as I was too. However, in August 2020, Terry and Pat decided to resign as Joint Chairs and as Parish Councillors, as did another Parish Councillor, Andy Hooker. Andy had served on the PC on 2 separate occasions. I would like to acknowledge the contribution the 3 have made and particularly Terry who continued to work with me on the Inspector's hearings even though he'd stepped down from the PC. The loss of 3 such knowledgeable and able Councillors was a major blow. They represented about 40% of the PC and were some of its leading members too.

So when I took over in August as sole Chair, the key challenge was to rebuild the PC team. We have been exceptionally fortunate in the calibre of our new recruits. They have brought a wide and diverse range of skills to the PC. They have also demonstrated an impressive readiness to give of their time in what has been a demanding and busy year for Rode PC.

Jim McAuliffe has coordinated our lengthy and detailed written responses on both the major planning applications, Jim is also liaising with Mendip's drainage consultants who are currently finalising their review on the state of Rode's drainage infrastructure. Mike Salmon has worked with Elaine Butler to launch the hugely successful Rode Hoedown project. Andy Pickett brings previous experience of being a District Councillor so has a useful understanding of the planning process. He also has become very actively involved in helping resolve some outstanding and often complex access issues over the S106 land.

We have seen a redeployment of other responsibilities amongst the existing team of Parish Councillors. Elaine Butler now handles a myriad of tasks including the Rode Hoedown project, overseeing the deployment of the Lengthsman in Rode and water run-off issues. Ann Edney and Pat Restorick have taken over the role of reviewing village planning applications as well as continuing as the PC's representatives on Rode Playing Field, a vitally important task. Finally, Steve Eyles leads on the roll-out of Ultrafast in Rode and ensures the permissive access to the Riverwalk between Scutts Bridge and The Mill.

To our Rode Parish Clerk, Hugh Williams, who only took on the post in December 2019. Over the subsequent months he has had a baptism of fire given the huge workload placed upon him. Many extra meetings, all of which he has had to minute... and they've been done very promptly too. Numerous actions result from all these meetings, actions that the Parish Clerk has had to take forward whilst at the same time learning the procedures and establishing

# Parish News

relationships with relevant contacts at the District and the County Councils. We are very fortunate to have such an effective and now experienced Parish Clerk.

Parish Councils, especially after the Handforth Parish Council meeting video went viral, don't get a good press but here on Rode PC we do have a very strong, professional and proactive team.

Finally, praise too for our impressively hard-working County Councillor, Linda Oliver, and equally diligent District Councillor, Barbi Lund. Both have attended nearly all our (often very lengthy) meetings, including the many extra meetings that have been necessary. They are both very strong characters and can present our case powerfully in the corridors of power within their respective Councils. Given her experience, Linda Oliver has sometimes given me personally very helpful advice on how to deal with issues and for that I am very grateful. Barbi Lund is a resolute and effective campaigner who certainly made quite an impact on the Inspector when presenting our case in the Hearings last Autumn. I am very grateful for the help, support and encouragement they have both given me.

So overall, it's been a very busy, incredibly challenging but largely successful year for Rode PC. One that has demanded a lot of the PC... and of me! It's consumed an enormous amount of my time, which is why after 3 years as Joint and then Sole Chair, I have decided to step down, albeit I hope to remain an active Parish Councillor championing, amongst other things, our buses in Rode. I believe our village affairs are in good hands given the Rode PC team that we have in place. Much has been achieved in the past 12 months but as one Parish Councillor pointed out, much as you might progress things, all you're doing is moving them onto the next stage. So already there is a daunting list of ongoing projects that the PC will need to keep progressing over the next year.

*Peter Travis*

Rode Parish Council, Chair

---

## 200 CLUB

The Rode Scouts 200 club results for April were as follows:

1st Prize £50 - Tim Flooks  
2nd Prize £25 - Mal Bertenshaw

Drawn by Della Stacey

*Jan Jupp*



# Parish News

## RODE HOEDOWN UPDATE



The first Rode Hoedown Day in April was a great success with over 30 volunteers supporting and helping either beforehand or on the day. We were blessed with a glorious sunny day and the village benefited hugely from all the volunteers “Tender Loving Care”. Benches were renovated on Lower Street, High Street and Marsh Road; a lot of weeding and sweeping took place on Rode Hill, Lower Street, Little Shard, High Street and Church Lane; Gullies were cleared on Marsh Road and teams of volunteers undertook litter picking on Straight, Crooked and Park Gate Lanes, Rockabella and Rode Hill.

Hannah from The Cross Keys gave us delicious sausage rolls, even with a vegetarian option, Christine Lowe baked scrumptious cakes and we had a lovely distanced get together on the Green afterwards with these refreshments... all in all, a good day for the Village and everyone!

As a core initiating team for this Community Volunteer Action our intention is to have these Hoedown Days as ongoing events @2pm on the last Sunday of each month... with no obligation from any volunteers for continual attendance as there are times for us all when we are otherwise committed so it's an 'As and When' it works for everyone... and of course, remember that it doesn't have to be on Hoedown Days that we do something, it can be at any time. As we've said before it's about us all looking after the village together and this can happen in many different ways and forms.

The second Hoedown is on Sunday May 30<sup>th</sup> which is a Bank Holiday weekend and soon after further opening up of restrictions, so some people may be away. So far at time of writing, 22nd May, 23 villagers have volunteered, doing something either before or on the day, and we're loving that people are keen to suggest the jobs and the areas on which they'd like to work. Sorting and clearing the telephone box and so making the Defibrillator more accessible is a new job offered this time which will be appreciated.

And many thanks to Robin Quartley who gave much attention over April to the bench on Lower Street. As well as clearing the space the bench sits on, repairing the bench and preparing it for painting on Hoedown day, Robin then bought a new plaque for it. We think everyone will agree it is looking very beautiful.

Many thanks to everyone who participates and supports this village action, isn't it lovely to see the village looking so well cared for!

*Mike Salmon, Elaine Butler, Peter Travis and Hugh Williams*

**...PHOTOS  
FROM THE  
APRIL  
HOEDOWN**



# Parish News

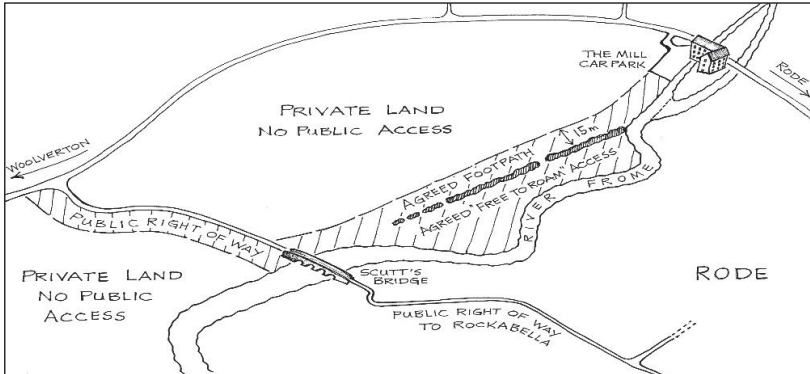


If anyone would like to be involved in the June Hoedown Day or future Hoedown Days please get in touch with: Mike 07818097030 or Elaine 07716 248825 [elainedbutler@icloud.com](mailto:elainedbutler@icloud.com)



## RIVER WALK – A BIG THANK YOU TO JIM RYAN

It's been nearly 10 years since Jim Ryan gave the village permission to fully enjoy the delights of "the river walk" from the Mill to Scutt's Bridge.



I'm sure many have noticed the signs as you enter the land that the "Riverwalk" is only open to residents of Rode and Woolverton. Jim Ryan, who lives in Wolverton, agreed in conjunction with the Parish Council to open up his land with certain conditions:

1. Adopted footpath access from the Mill walking directly to the Scutt's Bridge 15m wide has been agreed. The river area footpath and paddock to the left of the agreed footpath has also been agreed and made available.
2. Dog waste bins, provided at both ends of the walk must be used.
3. From the Mill along to the Scutt's Bridge to the right of the footpath is private land and must be respected as such.
4. Land to the left of the Scutt's Bridge and Woolverton footpath is private land and should be respected as such.
5. Rode Parish Council continue to issue resident passes (free of charge). Only residents of Rode and Woolverton with a valid pass and licensed fishermen are allowed access to use this land. Access passes are available from Caro Smith on 01373 830911 or Hugh Williams on 01373 831046. A register is maintained and passes can be withdrawn if access rights and conditions are abused.

Finally, during these difficult "Covid" times we have seen a huge increase in Rode residents enjoying walking from the Mill to Scutt's Bridge. I would like to sincerely thank Jim Ryan for giving permission to use his land for the benefit of the village.

*Steve Eyles*  
Rode Parish Council

# Parish News

## RODE GROWS AND SHARES

**Seedling Share Event 16 May** - We were given an incredible number of surplus homegrown plants for the seedling share event - veggies, herbs, annual and perennial flowers and house plants, plus seed packets and gardening books. Thank you to all of you who grew surplus plants and donated them!

Despite it being a mostly wet day for the event, we saw and spoke to a lot of keen (and hardy) growers and plant enthusiasts, many of whom took armfuls, wheelbarrows and even a bike trailer load of plants home and we also raised an amazing £240.52 - which has been equally divided and donated to the new Scout Hut fund in Rode and Mind, the mental health



charity for the fantastic work they do. We have since raised an additional £14.55 which we will put together with future donations from Rode Grows and Shares events. Thank you ever so much to everyone who contributed to making the event such a success, I am very grateful for your support!



**Rode in Bloom** - We will be jointly organising a 'Rode in Bloom' competition with both the Rode and District Gardening club and the Rode Allotment Society - encouraging more planting across the village for both our pleasure and for wildlife, and with a competition element to make things more fun! More details to follow in due course. Do let me know if you are interested in taking part and shaping it, we would love to have you on board.

*Julia Robb*

E: [juliarobb@hotmail.co.uk](mailto:juliarobb@hotmail.co.uk). T: 07527 918314

# Parish News

## R.P.F. REPORT TO THE RODE PARISH COUNCIL 2021 AGM



**Past Year** - Like so many charitable organisations we have been greatly affected by the limitations imposed by the pandemic. In March last year we were forced to keep the playing field closed for a time whilst the government developed its strategy for minimising the spread of Covid-19. Changes to government guidelines enabled us to reopen the grounds which was particularly welcomed by residents as the late spring and early summer weather was so sunny.

**Maintenance, Health and Safety** - Our annual review by RoSPA has highlighted a few minor deficiencies that we currently addressing not least of all a repair to the climbing frame at a cost of £341. To ensure a safe environment for the public we continue to inspect the play area at least monthly.

The weather has taken its toll on the fabric of the playing field necessitating replacement of the play area's western fence. The entrance at the south western end of the playing field had become dilapidated and has now been replaced with new handrails and a farm-style gate preserving the open aspect of the grounds from the footpath. These have all been significant works for our small charity, but they have enhanced the amenity of the playing field and will, when the pandemic has passed, encourage residents and others to make wider use of the facilities.

There remains much to do not least of all a plan to raise funds to repair the surface of the car park, replacing some of the play equipment and working with Rode Scouts to replace and reposition the Scout hut, which is now nearing the end of its life. These are significant and expensive ventures that we ask the PC and the community of Rode to support.

**Planning for the Future** - In April the Trustees published their plan for the development of the additional land that has been transferred to the parish via the Section 106 provisions attaching to the Church Farm development. In line with the options considered the previous year the Trustees unanimously agreed to implementation of Option 3 – a community orchard and wildlife development. It was felt that this option provided the greatest community benefit promoting significant involvement of residents, as well as village organisations such as the village school and Rode Scouts. Whilst the plan provides a firm framework for what needs to be done, when we can begin implementing it remains uncertain due to the Covid-19 pandemic.

# Parish News

**Funding for the Future** - At the beginning of the financial year 2019-2020 the audited accounts showed a total income of £7,675 with expenditure of £5,095. The greatest part of the income arose from four main sources.

1. A donation of funds from the winding up of Rode Preschool - £2,400
2. Bequests from Roger Sharp and Dorothy Dickinson - £2,252
3. The playing field lottery - £916
4. Freshford FC pitch rental - £500

Core expenditure amounts to £2,500 per annum necessitating retention of a reserve of £3,000 to cater for a single year's maintenance with a £500 contingency. Throughout 2020 the charity lost the steady flow of facility bookings due to the pandemic which, when combined with the lottery income and sundry donations, have traditionally provided sufficient funds to cover the charity's core costs. It is important to note that in 2020, without the additional funds from the sad demise of Rode Preschool, our lottery and Freshford FC's contribution the charity would have shown a net loss for the year of almost £3,500.

The new financial year has started well with strong interest in the playing field as a venue for post-lockdown social events. Combined with a generous donation of £1,250 from Clive Harrington in lieu of work done for the parish council, the charity currently holds a balance of £9,600. In terms of future funding this balance divides broadly into the following elements :-

Maintenance for 2021	£3,000
A reserve (1 year's maintenance)	£3,000
S106 Initial Development Funds	£3,500

To fund the full S106 development project the charity will need to raise a further £17,000, a strategy for which is included in the published plan. An assessment of all major works required to update and improve playing field facilities will be produced later in the year.

**Finally** - Over the year the committee has lost three Trustees who have given sterling service to the running of the playing field. Many thanks to John Griffiths for being our treasurer, and to Steve Rhodes and Nicky Robinson-Moore for their support over the past few years. Throughout the year we have asked and advertised for people to volunteer to replace retiring Trustees. Subsequently we have welcomed two new Trustees to our board, Lynne McDonnell and Amelia Christmas.

I would like to thank the Trustees for all their hard work during the past year. Their commitment in giving their time (and often their own money) and skills

# Parish News

in the maintenance of this invaluable community facility is unquestionable and much appreciated. I would also like to thank all those who have supported us, particularly Keith and Jane Sharman and their team who run our monthly lottery, Rode Post Office and General Store who sell the tickets and, when times are less immersed in the pandemic, Hannah and Mark at the Cross Keys for both hosting the draw and providing an additional prize of a Sunday Lunch for two every month. Last, but by no means least, I would like to extend the Trustees' appreciation to all those who have actively supported our charity over the past year, particularly those who have ensured the grounds are secure and others who have given freely of their time in helping with maintenance and fund raising.

*Nigel Clarke*

Chair of Trustees, Rode Playing Field

---

## RODE PLAYING FIELD LOTTERY

Huzzar! Finally the Cross Keys garden was the venue for the April draw and since Jane & I were unavailable, many thanks to Hannah for carrying out this arduous task. Next month inside in the warm!!

Playing Field Lottery winners in April 2021:

1st - £50.00 ... Frank Davies, Rode.

2nd - £25.00 ... Graham Noad, Rode.

3rd - £25.00 ... Gordon Roberts, Rode.

Sunday Roast for two is back! This time to Alice Sharman, Whitecroft, Lydney.

If you would like a chance to get a slice of this action, remember only 200 tickets available and a share of £100 and two Sunday roasts, possible all for £1.00 per ticket! And remember you are supporting the Playing Field when you buy your ticket.

Tickets on sale at the Post Office, or directly from Jane and I.

Next draws Monday 31st May and Wednesday 30th June inside the pub, possibly even without a mask! If anyone would like to do the draw or witness it from a suitable social distance then please feel free to do so. Just ask.



*Keith Sharman*

T: 830408

# Parish News

## LATEST UPDATE FROM OUR MENDIP COUNCILLOR

From time-to-time people who know that I retired from my “proper job” in the NHS in April 2019 ask me if I am enjoying retirement. I usually reply either with a wry smile or a very expressive “hah”! Either way I then feel the need to explain just how busy life is as both a ward and parish councillor.



I was, of course, elected as a Green Party Councillor and I hope that my passion for working to mitigate the effects of the climate emergency is evident to those who come in to contact with me even if much of my time needs to be spent on other Council duties, in particular, planning. This article will take you on a whistle stop tour of some of 2020-21 planning issues plus highlight some of the work that the Green Councillors are pleased to celebrate.

In addition to the more routine, though also extremely important planning applications, both Norton St Philip and Rode received several large and/or significant planning applications in 2020-21. You will probably all know what they are and details of these are in the respective PCs' annual reports. Some of them necessitated the holding of public meetings to enable applicants to present their application and for residents and the PC to ask questions. Most of them involved prospective development outside of the villages' respective development limits and all of them required careful and detailed consideration.

In November and December 2020, I worked with both the Parish Councils at the “additional hearings” on Mendip’s Local Plan Part 2 (LPP2). LPP2 was first scrutinised by the Inspector in 2019 however, issues came to light that meant that these additional hearings, on whether a further 505 dwellings should be allocated within the north east of Mendip, were deemed necessary. Approximately 80 of these dwellings were proposed to be spread equally across Norton St Philip, Rode and Beckington with the sites proposed for Norton St Philip and Rode outside the respective villages' development limits. The additional hearings enabled the PCs to challenge the inclusion of these sites.

As yet the Inspector’s final report has not been published but on 1 February 2021 Mendip was informed that the Inspector proposed to delete The Mead site in Rode (RD1) from the list of designated sites. Subsequently the MDC case officer has recommended refusal of permission for that application. None of the other applications referred to above has been determined by MDC as I write.

**Green Highlights** - The following motions were proposed at Full Council by Green Party Councillors. All were passed, most unanimously.

# Parish News

- 25 February 2019: That MDC declare a climate emergency.
- 24 February 2020: That MDC resolves to change its energy suppliers, within a 12-month period, to purchase gas and 100% renewable electricity from a UK green tariff company that is also building renewable energy capacity.
- 20 July 2020: That in advance of the Government's forthcoming Green Homes Grant Scheme, MDC should use officer time and council resources to research and explore how best to promote this and other related schemes.
- 22 February 2021: That MDC should send a joint letter to the Secretary of State for Work and Pensions (and others including local MPs) asking for a trial of Universal Basic Income in Mendip.
- 22 February 2021: That MDC resolves to use planning policy and guidance to tackle the Climate and Ecological Emergency as per its Corporate Priorities and that there should be an urgent review of the need and scope for Supplementary Planning Guidance Documents and General (Planning) Guidance Notes.

With regard to other MDC business, I was delighted to be appointed as Vice-Chair of the MDC Scrutiny Board in January and at the same time take on the role of lead for the Scrutiny Contracts Working Group. This provides me with an excellent opportunity to work more closely with some of the Mendip officers – and it feels just like my old “proper job”!

*Barbi Lund*

MDC Councillor for the ward of Rode and Norton St Philip

---

## LATEST POLICE ALERTS

### **21/05/2021 9788 Somerset: Gov.Uk Scam Email**

Please be aware that today I have received an email claiming to be from Gov.UK advising that a number of National Insurance Numbers have been disabled following reports of fraudulent activity.



The email states that if you are the recipient of such an email then your NIN as they state has been disabled and you must reactivate on the Red (Start Now) button shown on the attached document.

If you receive one of these emails, please Do Not follow the instructions and Do Not click on the Red (Start Now) Button, simply delete it immediately.

# Parish News

## LAVERTON NEWS

**St Mary's Church – The Floor Part 2:** Bob Hill's update follows.

The floor went back much as anticipated in the Part 1 account, Timberwise Ltd having duly visited to treat all the joists and the boards with their spray and gel.

However, when the boards were removed it, was found that the bottom of the side panelling on the wall in front of the pulpit was eaten by worms and weevils. Peter Stratford took several panels to his workshop to cut out the affected parts and replace with fresh oak. He did a perfect job, but it cannot be fully appreciated because with the pews back in place, the repairs are hidden.

In fact, now that everything is restored and back in place, the church looks much the same as it did before work started. An observant eye, however, will notice new air vent louvres in the floorboards near the wall. A floor life of at least 50 years is confidently expected. Sunday Services will resume in June.

### Footpath/bridge Closure Update:

As you may be aware the footpath/bridge between Brookhouse Farm and Laverton Church has been closed for a couple of months due to the bridge becoming unsafe.

Below is an update from Andraea Dawson Shepherd who is the footpath officer for Laverton (or some of Laverton due to our strange boundaries!)



Latest status on the bridge is that Somerset have been asked to keep the style of bridge as it currently is. They are sympathetic, but it will depend on the fix required. They say it could take up to a year, but a surveyor has been on site to look at it so we are hopeful it will be sooner.

Oddly, I do not act as officer on all the footpaths in Laverton as the civil PCC area is Lullington and parts of Laverton. But if anybody has any issues, they should definitely send me an email.

I'm [andraea\\_ds@yahoo.co.uk](mailto:andraea_ds@yahoo.co.uk) or reach out to me via my husband Andy on the Laverton Facebook site as I am not on Facebook

*Jackie Moss*



# Parish Youth News & Events

## H.V. CHILDREN AND FAMILY WORKER LATEST

**Outdoors Babes and Toddlers:** It has been lovely meeting new families at ‘Outdoors Babes and Toddlers’ on Wednesday mornings 9.30am -11.00am in the play park on the mead at Norton St. Philip. The meet and greet has worked well and 18 families have expressed an interest in ‘Tots and Toys’.



**Tots and Toys:** We will be able to re-open ‘Tots and Toys’ in St. Philip and St. James Church Norton St. Philip on Wednesday 16<sup>th</sup> June. At ‘Tots and Toys’ we welcome 0–5-year-olds and their parents, grandparents and other carers. We’re usually open every Wednesday morning throughout the year except for Christmas. In the school holidays we also offer ‘pop up’ family workshops at the same time for older siblings and/or other families with primary age children.



Due to continuing Covid guidelines you will need to register for a play session and depending on numbers I may have to run two play sessions 9.30am-10.30am and 10.45am-11.45am rather than the 9.30am-11.00am usual session. I therefore need all interested families to register with me and I can send out our covid guidelines and registration forms. You will need to book your session for the immediate future until Covid restrictions have been eased. You can contact me by email at [kidschurch@hardingtonvale.org.uk](mailto:kidschurch@hardingtonvale.org.uk) or leave a phone message on 01373 812766. I will also be putting information on the Children and Family Worker News on the parish website [hardingtonvale.org.uk](http://hardingtonvale.org.uk).

**Bug Hotel:** The next Mini Breakfast Church will be on Sunday 13<sup>th</sup> June 9.30am-10am. We’ll be working on our Bug Hotel in St. Philip and St. James Churchyard. You will need to book for this session due to Covid guidelines please use the information from ‘Tots and Toys’ for this. If the weather is inclement, we will be holding our usual zoom Mini Breakfast Church. Meanwhile if you have any of these items could you save them for the bug hotel: broken terracotta pots, hollow bamboo canes, roof tiles and drainpipes. These need to be taken to St. Philip and St. James churchyard by Saturday 12th June. Please leave them in the top left-hand corner of the churchyard overlooking the mead by the shed with the black doors.



*Sue Rodford*

Children and Family Worker

E: [kidschurch@hardingtonvale.org.uk](mailto:kidschurch@hardingtonvale.org.uk). T: 01373 812766

# Parish Youth News & Events

## RODE AND NORTON ST. PHILIP FIRST SCHOOL FEDERATION

Word Up!

It has been a very busy half-term in our schools. On May 17th we kicked off 'Wonderful Words Week' where we focused on vocabulary, writing and poetry.

It has been such a pleasure to see all the children getting so excited about writing and discovering a love for words. Many of the boys have developed an interest in poetry.

We kicked off the week with an assembly at each school. Each class was presented with a surprise box, wrapped in wordy paper, filled with writing materials, fancy pens, pencils and notepaper and some poetry books.



On Tuesday Mrs Muxworthy had a lovely surprise in assembly, an impromptu staff spelling test! She had put together a list of the five words that she often has to spell check. The children were allowed to help. It was wonderful to watch them giving spelling advice to the adults. Try your own spelling test at home with the same words: Definitely, Separate, Immediately, Necessary, Tomorrow  
In Assembly at Rode, Mrs Muxworthy re-launched the '100 Books To Read in School' challenge and was pleased to announce that our school libraries are now open again.



She was just reading from a book when a police car screeched into the playground, sirens blaring. Out jumped PCSO Olga Hapova and PCSO Glynn Samways, aka the 'Word Police' here to investigate 'crimes against the dictionary'. They had created a 'WANTED' poster for words that had escaped from word jail. We

# Parish Youth News & Events

were urged to 'apprehend' the words if we saw them and find 'alternatives' to use instead. The banned words were 'go, went, big, small, nice and weird' and we were urged not to use them.

Can you work out this anagram of one word? Eeeeellnpsssss:

Elmer Class were having a tasty time creating plates of food with words to describe them. Paddington Class were scribing words on the material inside their word cave tent.

Wildthings Class were brushing up their Shakespeare and learning how to create their own revolting insults. Cries of 'You curried prune' and 'Thou art as loathsome as a toad' echoed down the corridor. And that was just the staff!

As part of 'Words Week' we have set a whole school spelling challenge, 'The Great British Sponsored Spell Off'. The money raised will be used to buy more books across the classrooms. We ended the week by coming to school dressed as a word. Photo depicts 'radiant, magical, multi-coloured, fantastical'!

Grand Opening of Our Playpods:

Our Playpod sheds are now officially open and as you can see from the photographs some incredible play and engineering is already taking place. We have had tents, hospitals, chariots and assault courses constructed from the scrap. Bristol Scrapstore will be replenishing our supplies on a regular basis enabling some fabulous playtime fun!

Club News:

We have happily been able to start up our new after-school clubs including Muddy Monsters Gardening Club with Jo Ellis, Dramakarma with Kevin Ross, Music with Emily Hampson (Head of Music at Selwood School) and Football with ex-professional Martin Philips.

We have a few places left in some year groups for September so please spread the word and visit our website to get a flavour of our schools or book a visit in person.

[www.rodeandnortonschoolfederation.co.uk](http://www.rodeandnortonschoolfederation.co.uk)

Or call us on 01373 830523 or 01373 834327.

COME AND JOIN THE ADVENTURE!

# Parish Health & Wellbeing

## THE WORLD IS FINALLY OPENING BACK UP AGAIN!

We're really looking forward to being able to get back out in the community to see clients! Why not look up your local community centre, hobby or Carers group and see when they're active again? If you're not sure what's available in your local area call 01823 331 222 and we can help connect you!



If you're an unpaid Carer, please get in touch – you may not feel you need any help and support right now, but we can just check in with you, so you know what's available if and when you feel you would benefit from further advice. Right now, we can help you with anything from finding a sitting service if you have a hospital appointment, a package of care if you or a family member are returning from hospital or provide you with a little rest from cooking with our 'Carer Packs' - delicious pre-made meals for you and the person you care for. We can help make your everyday life a little easier, check you are receiving the correct benefits and look at the whole family support need, especially as we work closely with your doctor's surgery and adult social care. We have a freephone Carers Advice line you can call 0800 31 68 600 or text 'CARER' to 78070 and the Carers Advice line will call you back.

Whether or not you care for someone you may need a little extra help at home. From personal care, Carer's respite to household jobs a micro-provider could be just what you're looking for! Micro-providers are providers of very small, community based care and support services. A micro-provider has eight or fewer paid or unpaid workers and totally independent of a larger organisation. Examples of micro-services could include: Support to keep a person well, social and remain independent/Support to people living in their own homes/short breaks and holidays/Support to access employment, education and leisure/ and more. As Village Agents, we can help connect you with the right micro-provider for your needs - and it may be that you have more than one undertaking different tasks for you, as many have different areas of expertise.

Becoming a micro-provider is rewarding if you want to start a new career! You'd be well supported starting up by Somerset Micro-enterprise Project. You could become an accredited provider. For information visit [somerset.gov.uk/social-care-and-health/somerset-micro-enterprise-project/](http://somerset.gov.uk/social-care-and-health/somerset-micro-enterprise-project/) or call Rhys on 07788 350806.

As always, if you need support, information, or advice, please get in touch by phone or e-mail.

*Nic Edwards*

T: 07946 461468 E: [nicolae@somersetccc.org.uk](mailto:nicolae@somersetccc.org.uk)

# Parish Ecology

## WHAT'S IN THE RIVER FROME AND WHY SWIMMING IN IT MAY NOT BE SUCH A GOOD IDEA...

We are promised a spell of hot weather in June. This probably means that lots of people will descend on Tellisford Weir to come “wild swimming”.

The Rivers Trust has a website that lists all the sewage outfalls on the country's rivers. Upstream of Tellisford there are 30 such outfalls. Some of these are sewage works such as Frome, Beckington and Rode, others are outfalls from private plants. When there is torrential rain some of these outfalls get swamped and the raw sewage is discharged untreated to the river. In 2020 1,134 such discharges were logged. The Rivers Trust also records the number of hours the outfalls were discharging. In 2020 for a total of 8,532 hours raw sewage was discharging into the River Frome. Even though many of these discharges were simultaneous with other sites. Given that there are only 8,760 hours in a year it means that for much of that time in 2020 the river was having a lot of raw sewage added to it.

The Environment Agency records the chemicals found in the water samples they take. The Agency has recorded 49 different chemicals or minerals in samples from The Frome, many of which are carcinogenic or poisonous, including DDT, mercury, lead and arsenic.

You may have noticed little bits of grey fabric hanging from branches close to the water or caught in bushes on the bank, these are the remains of wet wipes and sanitary towels that have been flushed away. As noted by Mark Lloyd Chief Executive of The Rivers Trust, no sanitary waste or toxic chemical products should be flushed away.

Until the River Frome becomes a lot cleaner swimming in it is not a good idea and getting your head under water is potentially asking for trouble.

Put another way, if you want to swim in what you, your friends and neighbours ate 3 days ago go ahead: the River Frome beckons, but don't be surprised if you get sick and when you do be sure to tell your doctor what you have been up to because it could also be the onset of Weil's disease (leptospirosis), caught from rat pee, which is also in the river, this disease can have very serious effects on your kidneys, brain or heart.

*Anthony Battersby*

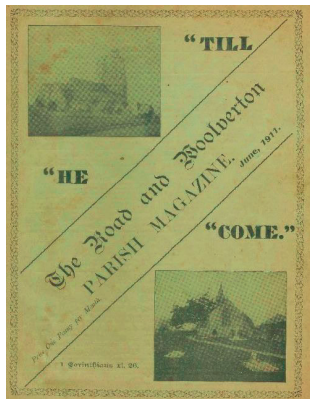
Tellisford Parish Clerk (acting) & Tellisford Planning Sub Committee Chair

# Parish History

## MAGAZINES...

Peter Harris, Rode's very own local history man has been the custodian and collector of issues of its parish magazines for very many years. The oldest of the magazines in the large collection is exactly one hundred years old this month! Peter diligently updates and adds to the collection every month.

On June 22, 1911, the Coronation of King George V and Queen Mary took place and the impending Coronation features heavily in the June 1911 issue of the Parish Magazine. Here are a few pages of the content from the June 1911 issue of "The Road and Woolverton Parish Magazine" – which cost 1d in its time. As I hope you will appreciate you may well need a magnifying glass to read them...



## What the Children would Say to the King and Queen.

By OUR OWN COMMISSIONER.

**I**T is well known that both King George and Queen Mary are tremendously interested in, and fond of, children. If it were necessary, many striking proofs of this fact might be given, but it is sufficient to remember that our King and Queen are parents themselves.

That there is a reciprocal love for, and interest in, their Majesties on the part of the children, even down to the very little ones, is equally true.

With the object of ascertaining the light in which very little children view their Majesties, I recently asked the Head Mistress of a large infants' school in the provinces—whom I knew had a tender spot in her heart for the parish magazine—if she would, during "composition" lesson, allow her to give me a written answer to the following question:—

*Boys*:—What would I say to the King if I met him?

*Girls*:—What would I say to the Queen if I met her?

The mistress very courteously explained that the ages of the little ones referred to ranged only from six to seven years, and she feared I would not get what I wanted. "They think almost

exclusively along the lines of the first person singular," said she, "and they would probably state that they could draw a cat or something of the sort and that I put it on the wall."

But this argument as to why the children should *not* do as requested seemed to me the strongest possible argument why they *should*, and ultimately a definite promise was given that my request should be granted in due course and the replies forwarded. A few days afterwards some three or four dozen replies came to hand, with a little note from the mistress intimating that the children had thoroughly enjoyed their novel exercise.

Taking the replies as a whole the inference would seem to be that their Majesties exist almost for the sole purpose of bestowing both large and small favours on very young children.

A few of the more interesting answers are given in facsimile. They of course speak for themselves, and show to perfection the working of the infantile mind. Where a lack of proper capitalization exists it must be overlooked. Bad grammar and incorrect orthography must also be excused, but it is the work of

*I would like to see  
you crown'd but  
it is in London and  
we cant afove it*

*I like you be  
cause you like  
little boy and  
girls*

# Parish History

Good morning sir  
You are a good  
king

Do you like  
to be king

I should like  
to kiss you

tiny tots whom I am assured put their whole heart into it, and that is what perhaps some of us who are older do *not* always do. In the majority of cases the handwriting is very com-

others are far more modest in their request and simply write, "I should like a penny, please." "I should like a teddy bear," boldly asserts one little fellow, and without the *please*, too! Yet



All the "Georges" in a North-London Infants' School of 360 Scholars.



All the "Marys" in a North-London Infants' School of 360 Scholars.

mendable, and in every instance it, at any rate, has the merit of being legible.

More than a dozen answers from the boys resolve themselves into what I may term "I should like's." One avaricious juvenile says, "I should like plenty of money," whilst two

another boy has forgotten his "please" in saying "I should like a medal of you," whereas the wish of a class-mate is somewhat ambiguous; for he says, "I should like to have a medal *off* you." Boys evidently think a good deal of medals, for here is another reply referring to them, "Good

We all want  
you to be made  
king.

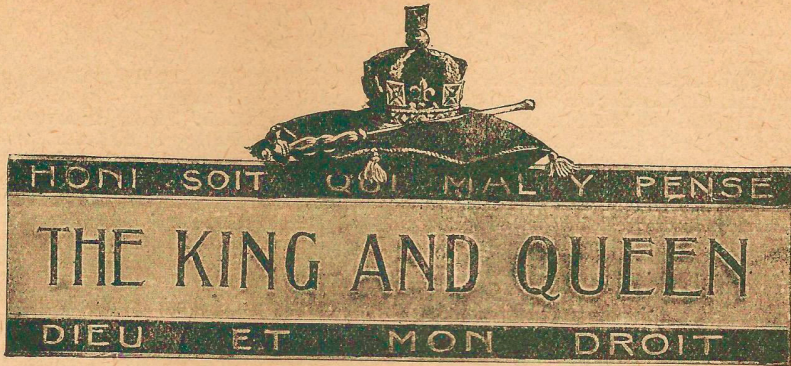
I wish I was  
your little girl;

Please sir you  
are the biggest  
man in England.

As the current Editor of the Parish Magazine, I was amazed at the extent of Peter's collection and I thank him on behalf of our community for his many years collecting this piece of our social history. Perhaps it might be worth delving in your attic to see if you may have an issue that could add to the collection? I know Peter would be delighted if you found any! His contact details are E: [pjh14cl@gmail.com](mailto:pjh14cl@gmail.com). T: 01373 830928.

Gill Leonard

More to follow...



King George.

THE King "comes to his own" with a unique knowledge of his own. No crowned head has ever carried all he knows of the British Isles and the wide dominions beyond the seas. For many years he served in the Royal Navy,

passing through every grade of the profession. We recall him as a raw cadet, learning by painful experience the mysteries of darning his socks and mending his clothes, the splicing of ropes and the making of sails on the training ship *Britannia*, and relieving the monotony of routine by boyish pranks when ashore at Dartmouth. Then he emerges into the smart well-trained midshipman, keen about everything connected with his profession, voyaging round the world in the good ship *Bacchante*, and laying the foundations of his unrivalled knowledge of the dominions beyond the seas.

In the diary of the Princes, of whom the King alone survives, we read:—

October 6th, 1879.—Rose early and saw the sun rise right ahead at 5.30 a.m.

"Bluish 'mid the burning water, full in face Trafalgar lay,

In the dimmest north-east distance dawned Gibraltar, grand and grey.

'Here and here did England help me: how can I help England?' say,

Whose turns as we, this morning, turn to God to praise and pray."

"Seventy-four years ago this very month these capes and bays were witness to that, the memory

of which this morning fills our minds."—"Cruise of H.M.S. *Bacchante*."

"Turn to God to praise and pray." What a kingly motto; what an inspiration for the responsibilities of kingship. And we can say without any hesitation that what the young Prince felt in 1879, he feels to-day on the eve of his Coronation.

It has been noted that as a midshipman King George is remembered by his comrades for his high sense of duty and for his private virtues. Those who know the impulses of a profession which more than any other invests youth and even boyhood with the responsibilities and the liberties of men will acknowledge the true significance of such testimony. The Prince was keenly interested in his calling, and left it with sincere regret when the death of his elder brother summoned him to other duties. As an officer, whether in a ship or with a separate command, he gave unmistakable evidence of those rare qualities that make a leader of men. He never shirked responsibility and never permitted pleasure to turn him from duty. His comrades of every rank felt this influence, and his superior officers acknowledged in the sailor Prince a most valuable personal asset in the discipline and efficiency of a ship.

It is said that, thanks to his naval discipline, the King has a loving admiration for the sailors, soldiers, and administrators of his world-wide dominions. Next to them,



Queen Mary.



## THE KING AND QUEEN

he likes the workers of the Empire—the manufacturers, the artisans, the great business organisers, doctors, men of science; in fact, everybody actively engaged in labouring with their hands and brains. On the other hand, he has no great regard for the mere society man and the mere society woman. Indeed, it is now an open secret that he is absolutely bored with ordinary society life. He is himself a hard worker, and he prefers the company of other hard workers. What he was as Duke of York and as Prince of Wales, that he has already been as King—the busy public man, the devoted husband and the loving father. As a monarch he is showing his determination to rule his mighty Empire with understanding and with sympathy. It seems to be His Majesty's special gift to realize the point of view of all classes and of all nationalities among his subjects.

In his imperial task, the King has a wise and true helpmate in Queen Mary. She is a true home-maker, and the training she herself received she is passing on to her daughter Princess Mary. As a tiny girl, Princess Mary was taught to sew by her mother, and one of her duties was to assist in darning her brothers' socks. Cooking instruction came next, and Princess Mary, provided with her own little pasteboard, rolling-pin and pots and pans, made splendid progress in the culinary art.

The Queen herself is a beautiful needlewoman, and when in her own homes or the family circle, is never seen without a piece of needlework at her elbow. Even when staying in a country house a bag of needlework is brought to her after dinner, and as she talks she busily stitches. Many of the garments sent out by her to the poor and needy at Christmas and other times have been made by her in hours that would be given by other women to selfish amusement.

In Her Majesty's keen sense of duty and her devotion to social reform, there is much that reminds us of Prince Leopold, who was known as the Scholar of the Royal Family. The two following quotations from the Prince's speeches might have fallen from the lips of our gracious Queen herself:—



Photo by (Gibson Studio)  
The Archbishop of Canterbury, who crowns the King and Queen.

“To learn anything thoroughly teaches us to respect what we learn. It teaches us to delight in our task for its own sake, and not for the sake of pay or reward. And the happiness of our lives depends much less on the actual value of the work which we do than on the spirit in which we do it. If a man tries to do the very simplest and humblest work as well as he possibly can, it will be interesting to him. But if he is only thinking of what he can get by his work, then even the highest work will become a weariness to him.”

“I believe that the narrower patriotism is often the best way of leading us to the broader; and that the better citizen a man is in his own locality, the better citizen will he be of England; and that the truest sons of England will make the best citizens of the world. Then it is, when a man has *lived for others*, has worked for public ends, that the good which he has done is not ‘interred with his bones.’ No! it lives after him.”

Does not this high principle find an echo in the simple verse written by our Queen when she was “Princess May” from White Lodge, Richmond Park:—

If each man in his measure  
Would do a brother's part,  
To cast a ray of sunlight  
Into a brother's heart,  
How changed would be our country,  
How changed would be our poor,  
And then might Merrie England  
Deserve her name once more.

Queen Mary made known her intention of having her coronation dresses made entirely of

British goods at the beginning of the year, and expressed the wish that all who attend the Coronation should wear British-made dresses. The Queen's thoughtfulness in this matter has greatly stimulated the silk and velvet weaving industries, and brought work to many skilled handicraftsmen who had been obliged to turn to other forms of work in order to earn a livelihood. At the Yorkshire mills and at Braintree women and girls, too, have found good employment in preparing the delicate silks for the cloth of gold and the cloth of silver used in Coronation dresses.

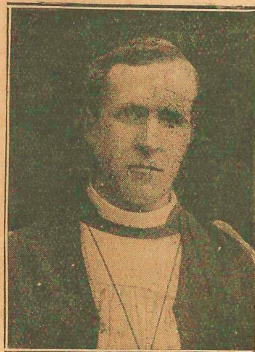


Photo by (Elliott & Fry)  
The Archbishop of York, who preaches the Coronation Sermon.

# Parish Gardening

## GARDENING IN JUNE

Our gardens desperately needed the rain after a very dry April, but perhaps not as much as we actually got in May - which turned out to be such a wet month! However, I am very happy to see the back of the frosts - fingers crossed we don't get a freak cold snap.

With the rain and the warmer temperatures our garden plants, local hedgerows, verges and trees are really bursting into life, and the swifts have returned to Rode - I really love this time of the year!



We have a small 'garden' at our house on the High Street, but we have made the most of it by packing it full of plants in pots and I love it.

Even in a small space you can have a range of plants providing interest and it can be very useful too as we are growing herbs and it mostly tends to look after itself - we just need to keep them all watered during hot dry spells.

Here are some gardening tasks to do this month:

- Planting - now that the risk of frost has passed, it will be safe to plant out summer bedding plants and both hardy and half-hardy flower and veg annuals. When raising plants from seed under cover, it is a good idea to 'harden them off' before being planting outside - meaning they have spent some time in a sheltered spot in the garden, adjusting and toughening up to better withstand any wind and rain.
- Weeding - with the rain and the warmer temperatures, weeds will be growing quickly so it is a good idea to keep on top of the weeds as much as you can, before they spread their seed or roots.
- Pruning spring flowering perennials and shrubs - cut back spent flower stems and any tatty leaves of pulmonaria to reveal the fresher new leaves at the base, and also give shrubs such as Choisya, weigela, kerria, Chaenomeles and ribes a cut back after they finish flowering.

# Parish Gardening

- Hedge cutting - with the warmer weather hedges will be started to grow too, and if you like your hedges neat then you can start pruning them - growth and frequency of pruning will vary between species - privet grows very fast and needs cutting regularly, whereas box/Buxus grows relatively slowly and needs less frequent pruning.
- Doing the 'Chelsea chop'- a technique for pruning some specific summer flowering perennials, but not all of them. As the growth of plants has been delayed by two-three weeks compared to last year (due to the prolonged cold weather).

The Chelsea chop would normally be done towards the end of May, (timed when the Chelsea flower show normally takes place) but can be done in early June if you haven't done it as yet. Late summer flowering perennials such as phlox, rudbeckia, achillea, campanula, penstemon, nepeta, helenium, echinacea, asters and sedum spectabile (now called hylotelephium - I am never going to get used to the new name, it will always be sedum to me) all benefit from pruning 1/3 of their growth. Doing the Chelsea chop will delay flowering, produce more and smaller flowers, and will produce more compact and sturdy stems.

You can either give all of the plant the Chelsea chop, or you could experiment by pruning only half of the plant and leaving the other half unpruned, which will give you a longer and staggered flowering period and mixture of heights and flower head sizes.

- Lawn - regular mowing and edging is recommended for a green and neat lawn. For any patches or dips, I would recommend top dressing and over seeding - ideally to be done on a dry day before we are forecast some cooler and wetter days.
- Wildlife - if you can keep feeding and providing water for the birds, and also hedgehogs if possible - you can get specialist food for hedgehogs, but you can also leave out dog or cat food (but nothing fish based). We put sunflower hearts on our bird feeder which has been very popular with a range of garden birds including wood pigeons (!), collared doves, goldfinches, sparrows and blue tits.

The blackbirds prefer to feed directly below the feeder, so I leave a small pile of sunflower hearts for them to enjoy. We have a water dish too and I love watching the birds drink from it whilst stood by our kitchen sink - it makes washing up more enjoyable!

# Parish Gardening

I wanted to signpost a couple of things that you might be interested in - the National Garden Scheme and the Plant Britain campaign.

Whilst visiting Avonfield Nursery in Hilperton, I was delighted to spot a National Garden Scheme (NGS) poster stating that the scheme is running this year! In June alone, there are 17 NGS gardens within a 15 mile radius of Rode to explore - as usual the gardens are only open on specific dates, and for some gardens pre-booking is essential, so do check the website for inspiration and more information [www.ngs.org.uk](http://www.ngs.org.uk).

Also, when watching Countryfile I learnt of their 'Plant Britain' campaign which has a target to plant 750,000 trees in the next 2 years - 1 tree for every primary school starter in 2020. In doing so, the campaign aims to improve the wider environment, improve and increase habitats for wildlife, improve the wellbeing of those taking part in planting and also those visiting the planted areas. As well as planting trees, we are all encouraged to plant more fruit, veg and flowers too and to then record what we have planted across the country. In the parish alone, and within the Rode Grows and Shares group I know we are planting and planning to plant a lot of things, and if you would like to contribute to this campaign then you can record your plantings here: [www.plantbritain.co.uk](http://www.plantbritain.co.uk).

Shared Gardens: We've been busy at our plot sowing seeds, pricking out, potting on many flower, veg and herb plants in the greenhouses, and with the help of my family we've also constructed an archway tunnel from wooden stakes, bamboo and galvanised mesh, on which we will train various edible climbers.



During some strong winds two of our glass greenhouse panes blew out and shattered which was a bit of a shock. Thank goodness nobody was nearby when it happened!

Do you have a patch of garden that you don't use any more or is too much work? Would you be interested to share your garden with others? Or would you like to have more space to grow vegetables, fruits and flowers? If so, I would love to hear from you if you are interested in getting involved in the Garden Share scheme across the parish. Happy gardening!

*Julia Robb*

E: [juliarobb@hotmail.co.uk](mailto:juliarobb@hotmail.co.uk). T: 07527 918314

# Parish Groups

## RODE MONTHLY WALKING GROUP

Last month's walk of the Tellisford loop turned out to be a successful reunion of the group following all the months of Lockdown. We had pleasant weather, despite the forecast, and it only rained towards the end, just before we arrived at the Cross Keys for coffee.

The next walk will be at a later date, Thursday 10th June, starting at the village green at 10 am. We will walk to Beckington, varying the routes there and back and including both the Beckington loop and a coffee stop. Please contact me if you have any queries.



*Liz Dinnis*

E: elizabethdinnis49@gmail.com T:07788 656337

---

## RODE LADIES GROUP

Advance notice of proposed re-opening (all being well). Although there are still some uncertainties regarding Covid safety regulations, we are pleased to announce that Rode Ladies Group is preparing to re-open in September.

In response to member suggestions as well as the future availability of Rode & District Memorial hall, it has been decided to meet on the fourth Wednesday of the month, in the afternoons. The first meeting will therefore be held on: Wednesday, 22<sup>nd</sup> September at 2.30 p.m.

This will of course take place in accordance with the Covid restrictions pertaining at that time. It will be an opportunity for members to re-unite, and for potential new members to come along and meet us, and we will welcome any comments and suggestions. Watch this space for further news.

*Pam George*

---

## MONDAY LUNCH CLUB

Fingers crossed the government announcement on Covid restrictions this month frees us to finally make some definite plans for resuming our lunches. With love and best wishes.



*Alex Sing and the Team*

# Parish Cricket



The season started well on a bright and sunny Sunday afternoon on the 2nd of May.

Twenty-two club players took to the field for a pre season warm up match. All sporting new club shirts and caps and definitely looking the part, I'm pleased to say the Pitchforkers came out victorious!

Win number one under our belt (or loss number one if your glass is half empty!).

Then it sadly went down hill, the cold returned along with the rain and three defeats followed against Poplars, Hinton Charterhouse and Bradford on Avon.

We are sure to return to winning ways with some much needed support and a large Wednesday evening crowd in the warm June sunshine...

A mention must go to Josh Bird and Sebastian Smith who have made their debuts for the club this season.

Both joined the junior section as U9s and have since been regular team members in the u11s and 13s, with both now playing for the U15s. Josh made his debut in the rain against Hinton and had a solid performance behind the stumps, as wicket keeper, to some very erratic bowling. Seb played his first match at Home to BOA and bowled a great four overs which included his first wicket, a catch to deep cover. Well done to both.



# Parish Cricket

## June Fixtures (Wednesday evenings, 6pm, unless stated):

26 May	Monkton Cavaliers	Home
2 June	Babington	Home (Sponsored by Duncan & Ruth Barley)
6 June (Sun 1.30pm)	Nairobi Nomads	Home
9 June	Cranmore	Away
14 June (Mon)	U15 vs Bathford	Home
16 June	Poplars	Away
23 June	BOA	Away
28 June (Mon)	U15 vs Corsham	Home
30 June	Keevil CC	Away
7 July	Heytesbury	Home

## Hoodies and Caps:

As mentioned the team has some new kit this year. Our smart black and gold hoodies and caps with the club logo have been in high demand. I will be placing another order soon so if you would like either at cost price (Hoodie £21.50, Cap £11.50) please let me know.

## Sponsorship:

A big thank you to Duncan and Ruth Barley for sponsoring our match on 2nd June against Babington House. In recognition of its 100th anniversary we will be making a collection during the game for the Royal British Legion. Your support is very much appreciated.

Like all clubs and organisations, it is hard to cover running costs by subscriptions alone. Ageing mowers, rollers, scarifiers etc. all eat up funds. If you would like to sponsor a match for £25 please contact me. We are happy to promote any business or cause.

Norton St Philip CC is a one team, very friendly and social, village club that play midweek matches. If you would like a game or just like to become a social member please contact Chairman Rupert Foster, 07793 440534, or myself.

*Mark Finch*

T: 07876 191100



# Parish Food & Drink

**blindmans**



**brewery**



**Fresh Craft Ales, Casks, Mini Kegs, Bottles, Cans, Bag in Box  
Local & UK Delivery for all occasions**

**DISCOUNTS AVAILABLE FREE LOCAL DELIVERY OPTIONS**

**[www.blindmansbrewery.co.uk](http://www.blindmansbrewery.co.uk) 01749 880038**

**Blindmans Brewery, Talbot Farm, Leighton, Frome**



**The Mill at Rode** have really enjoyed seeing so many familiar faces in our gardens over the last few weeks, however due to new government guidelines we are now opening all our indoor areas too!

We are taking walk-ins but it's dependant on availability, so we really recommend that you book in advance to avoid any disappointment.

If you would like to book a table, please call **01373 831100**

**John and the team.**

@rodemilofficial

<http://www.rodemill.co.uk>





# Parish Food & Drink



**FREE LOCAL  
DELIVERY**

**07486 059985  
11 LOWER ST, RODE**

We are a craft bakery in Rode selling a range of baked goods available for free local delivery or collection every Thurs, Fri & Sat.

Visit our Facebook Page or Website for our menu, with specials announced every Monday based on what's fresh and in season.

Order online or by text or email. 24 hour pre-order is essential.

[07486 059985](tel:07486059985) / [joewilkinbakes@gmail.com](mailto:joewilkinbakes@gmail.com) / [thevillagebakingco.co.uk](http://thevillagebakingco.co.uk)

[www.facebook.com/thevillagebakingco](http://www.facebook.com/thevillagebakingco)



# Parish Food & Drink

## CHATLEY FARM BROWNIES

NEAR BATH

[www.chatleyfarmbrownies.co.uk](http://www.chatleyfarmbrownies.co.uk)



Lovingly handmade on the farm  
9 Delicious flavours  
Delivered by Royal Mail

FREE Gift Wrapping & Gift card  
Gluten free options  
Local Collection from Norton St Philip

### OUR MULTI BUY OFFERS

**£8.50**

For 1 pack

**£8.00**

each for 2 or 3  
packs

**£7.50**

each for 4 or  
more packs

Follow us on facebook!

[www.facebook.com/ChatleyFarmBath](https://www.facebook.com/ChatleyFarmBath)

## Somerset Foodie

Ingredients to inspire

### Your local online specialist food retailer

Shop online, we're local and offer FREE same day delivery, straight to your doorstep. Transform the meals you create at home with our artisan ingredients, you'll find simple and inspiring recipes with 'how to make' videos on our website.

♥ [somersefoodie.com](http://somersefoodie.com)



Deliveries are made on our 100% electric van

Our own packed wholefood ingredients are 100% Plastic free

Over 100 Five Star Product Reviews, in the last 6 months



Somerset Foodie Ltd, Church Farm, Rode, BA11 6AA t. 07834 852 561



Enjoy a little **fussels**  
[www.fussels.co.uk](http://www.fussels.co.uk)  
ORIGINAL & FLAVOURED RAPESEED OIL  
DRESSINGS • MAYONNAISES  
VINAIGRETTES • FOODIE GIFTS  
FARM TOURS



Award winning Cold Presses British Rapeseed Oil, grown, pressed and bottled on your doorstep.

Visit us at our factory shop in Rode (BA11 6AA), Mon. to Fri. 9am to 5pm. Or shop online at [www.fussels.co.uk](http://www.fussels.co.uk) • Free delivery on orders over £30.



# Parish Food & Drink



32a High Street, Rode, BA11 6PA

Telephone 01373 830321

Sam and the team would like to thank everyone for their continued support of the shop, café takeaway and post office.

We have had some very wet and windy weather in recent weeks so further easing of restrictions and being able to allow eating inside again was very well timed. We have thoroughly enjoyed the return of our customers being able eat and drink at the café .

We continue to serve breakfasts, lunches and also takeaways, and of course a selection of tasty treats including our well known brownie selection.



Opening hours for the shop, café and post office...

Monday	09.00 - 17.30
Tuesday	09.00 - 17.30
Wednesday	09.00 - 13.00
Thursday	09.00 - 17.30
Friday	09.00 - 17.30
Saturday	09.00 - 13.00

# Parish Food & Drink

## Cafe & Shop both now open!

We are so happy that our  
cafe is now open.



Tables available outside and in our  
extension. Full table service.  
No booking necessary.  
Open inside from 17 May.



Breakfast 9.00 – 11.30  
Lunch 12.00 – 3.30  
Afternoon Tea until 4.00

*We are still offering our delivery and  
collection services from the shop for  
those not feeling comfortable visiting us.*



## Farleigh Road

FARM SHOP & CAFÉ

Phone 01225 720006

[www.farleighroadfarmshop.co.uk](http://www.farleighroadfarmshop.co.uk)



# Parish Events

FRIENDS OF RODE & NORTON SCHOOL FEDERATION  
PRESENTS



**THE  
TFI FRIDAY**  
(THANK FRANS IT'S FRIDAY)  
**TUCK SHOP**

EVERY FRIDAY IN TERM TIME  
AT RODE PLAYING FIELD & NORTON ST PHILIP MEAD 3-5PM

HOT FOOD, BUBBLES, BEER, TEA/COFFEE, CAKE, ICE LOLLIES,  
SNACKS & MUSIC - SEE IN THE WEEKEND WITH US!

**RODE WALKING GROUP**

**MAY WALK THURSDAY 10TH JUNE**

**See page 35 for details**



# Parish Events



COMMUNITY VOLUNTEER ACTION

## RODE HOEDOWN DAY

SUNDAY 27TH JUNE @2PM

COME JOIN TEAM RODE ON HOEDOWN DAY

We're a growing group of volunteers willing to give a few hours a month to help look after our village. This could be weeding, planting flowers, sweeping a pavement or picking up litter along a country lane.

TO FIND OUT MORE GET IN TOUCH WITH:

MIKE SALMON 07818 097030  
ELAINE BUTLER 07716 248825  
ELAINEBUTLER@ICLOUD.COM

REFRESHMENTS AFTWARDS ON THE VILLAGE GREEN

## GRAND RODE DUCK

RACE

3<sup>RD</sup> & 4<sup>TH</sup>

JULY

SEE PAGE 6

FOR INFO



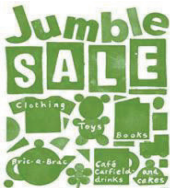
SAVE THE  
DATE

RODE

Village Day

BANK HOLIDAY  
MONDAY  
30<sup>th</sup> August

See page 6  
for more  
information



RODE PLAYING  
FIELD PAVILION

July 10<sup>th</sup> at 2 pm

SAVE THE  
DATE

St Mary's  
Laverton  
Church Fete  
Saturday  
31st July  
10.30am

# Noticeboard

## 100 YEARS... CELEBRATE 100 YEARS OF SUPPORT WITH US.

For 100 years the Royal British Legion has been a symbol of hope for the Armed Forces community. As we reflect on our achievements over the last century, we know they are not ours alone. The RBL has always been supported by a network of volunteers, members, fundraisers, and corporate partners who share our passion for bringing people together to support, commemorate and celebrate our Armed Forces community.



In the aftermath of the First World War, it became apparent there was a need for an organisation to support and represent all members of the Armed Forces and the RBL was founded.

On 15 May 2021 we marked our centenary with a special event at the Cenotaph, recreating the moment 100 years ago when the British Legion was formed.



Join us in celebrating our rich history, the difference we've made, and looking forward to the next 100 years. We take pride in our heritage on which we have built the RBL of today; an organisation fit for the future and ready to continue its work for another 100 years and beyond. As we look to the future, we remain dedicated to our mission of creating better futures for those who have served and their families. By building on a century of work we'll make sure that all who have served and sacrificed on our behalf get the fair treatment and recognition they deserve.

Celebrate 100 years of support with us, to find out more about this and the history of RBL visit: [britishlegion.org.uk/about-us/our-centenary](http://britishlegion.org.uk/about-us/our-centenary)

Amongst other things it includes information on our Centenary Prize Draw and how to join us in our centenary celebrations, such as "A Great Poppy Party". Host a summer celebration and raise a cheer for 100 years of the poppy. This summer, more than ever, we all want to be together with friends and family, so invite them along to a party, cook, bake or BBQ and raise funds to support our Armed Forces today. It also includes much on our history, for example, the "Story of the Poppy Factory", looking back on how the RBL has worked with it to support wounded, injured and sick veterans back into employment. Another



# Noticeboard

example being “The TB Hospital” story. The welfare and wellbeing of the Armed Forces has been at the heart of RBL since our inception in 1921. One of our earliest interventions saw us create a dedicated hospital and village to support ex-serving personnel suffering from tuberculosis after the First World War.

For 100 years, the Royal British Legion has provided much-needed welfare and comradeship to millions, and we’ll keep working to ensure that no one who has served is disadvantaged because of the sacrifices they have made.

We still need your support more than ever. COVID-19 has had a catastrophic impact on people’s lives. Right now, we are helping members of the Armed Forces community who are isolated from family, feeling lonely, facing homelessness, struggling to feed their children, and are in financial crisis.

During 2020, for the first time in the 100-year history of the Poppy Appeal, our volunteers were unable to carry out face to face collections in England and Wales, and as a result there was a shortfall of £20m in what we aimed to raise. More than ever before, we need the support of the public to ensure those who have served, and their families, always have somewhere to turn.



**BECKINGTON OPEN GARDENS - SUNDAY 13<sup>th</sup> JUNE: 2pm – 5pm**

£5 (start at The Woolpack) Children under 12 free.

Teas, Plant stall & children’s trail. No dogs please

# Noticeboard

## The Secrets of Corsley House Now Revealed - Sunday 18th July

Corsley House, near Longleat, started life as a picturesque farmhouse in the early 18th century, resembling a fairy tale castle with its leaded windows and stone turrets. In 1812 the prosperous Barton family hired the renowned Bath Architect John Pinch the elder to add a substantial Greek revival addition lending the house a unique character with one entrance feeling much older than the other. Most of the outbuildings at Corsley House



have been unaltered including a lovely apple store with its original interior and a listed grain store built on staddle stones. The real garden gem is the Walled Garden with its spectacular view of Cley Hill. It has been returned to its former glory, would have kept the family and staff substantially self-sufficient all year long. A new addition to the grounds is the wave lawn which undulates along the Georgian side of the house.

For the first time in decades Corsley House is opening its gardens to the public. Come and step back in time on Sunday 18<sup>th</sup> July, a chance to see the vernacular Kitchen Garden outbuildings and to imagine how it once was. Guided tours of the gardens, Frome's Rye Bakery's Woodfired Pizzas, a Pimm's Bar, tea and coffee, children's entertainment and much more. For further details call: 01373 832 074 or Email: chogtickets2021@gmail.com. All proceeds to go the Churches of Corsley and Chapmanlade.

**HEYWOOD HOUSE, BA13 4NA**  
Sunday 5th September 2021 at 3pm  
Tickets: [illyria.co.uk](http://illyria.co.uk),  
[theelizabethanplayhouse.com](http://theelizabethanplayhouse.com)  
01373 832113

**THE ELIZABETHAN EVENING AT MANOR FARM**  
Sunday 1<sup>st</sup> August 2021 at 2.30pm & 7.00pm  
Tickets: [theelizabethanevening.com](http://theelizabethanevening.com), 01373 832113

# Parish Council Meeting Minutes

MINUTES OF THE VIRTUAL (via ZOOM) MEETING OF RODE  
PARISH COUNCIL HELD  
ON TUESDAY 4<sup>th</sup> May 2021 AT 7.30 pm

---

## UNCONFIRMED

### **Present:**

Cllr Peter Travis – Chair (PT), Cllr Ann Edney (AE), Cllr Pat Restorick (PR), Cllr Steve Eyles, Cllr Jim McAuliffe (JM), Cllr Andy Pickett (AP), Cllr Mike Salmon (MS)

**In attendance:** Cllr B Lund, Cllr L Oliver, Hugh Williams – Clerk, and 4 members of the public

### **1. Public Participation:**

Comment was made that the review of use for the playing field was no longer easily accessible on the Village Facebook site. It was noted this review would be further discussed at the Parish Meeting on Thursday. The review it would be posted onto the Parish Council website.

A question was raised as to whether there was any news of the proposed development on Barbara's Field, in response it was said that Mendip had not made a decision yet and may not do so for a couple of months. The refusal for development of The Mead/Merfield site had been good news but in response to a question over an appeal it was said the developer had 6 months within which to appeal.

A request for the SIS Speed sign to be reinstated on Straight Lane was made.

**2. Apologies for absence:** Cllr Elaine Butler

**3. Approval of the minutes:** The minutes of the Parish Council meeting held on 6<sup>th</sup> April were approved.

**4. Declarations of interest:** None.

**5. Report from County Councillor:** A response from SCC had been received regarding the adoption of The Sportsman and this should be pursued (see also under minute 9).

The legal challenge to continue with virtual meetings had been rejected and physical meetings would have to take place after 7<sup>th</sup> May.

**6. Report from District Councillor:** Cllr Lund reported that the public consultation on the Unitary Authority had closed; however, all four district councils were going to hold a referendum on the Unitary Authority composition

# Parish Council Meeting Minutes

– this will take place from 18 May until 4 June. Again, it was noted meetings of Mendip District Council would have to cease to be virtual after 7<sup>th</sup> May.

## 7. Actions from the previous meeting:

- i) **Hoedown:** The village Hoedown, organised by MS and EB, was held on 25<sup>th</sup> April with 35 volunteers plus a few others working outside their own properties. This was a very good response and involved the picking up of litter, clearance of gullies on Marsh Road, re-staining 3 benches and weed clearance in various locations around the village during the 2 hours. Thanks were also given to those supplying cakes and sausage rolls. MS reported a further 14 people had expressed an interest in future Hoedowns; he added that another was planned for afternoon of 30<sup>th</sup> May and possibly on the last Sunday of the month up to October.  
Approval was agreed for further expenditure for grabbers, waste bag rings and high visibility jackets as well as approval for bag, gloves, sandpaper, wood stain and other sundries already bought for the April Hoedown.
- ii) **Lengthsman:** Ben Vowles was due to start work on 14 May, probably clearing gullies on Marsh Road. There was discussion over the width of the path on Church Lane, investigation would be conducted to see if tarmac continued under the encroaching bank and possible contact made with County Roads regarding its width. It was agreed that the Lengthsman should keep an eye on this and clear as necessary as part of his regular duties.
- iii) **The Bell:** Contact attempts would continue, to date no response had been received.
- iv) **Riverwalk:** It was reported it was 10 years since Jim Ryan had allowed walking across the fields by the river and a vote of thanks was given to him as this had been so welcome for villagers during this last year. A letter of thanks would also be put in The Link.
- v) **Jubilee Clock:** This had been installed in 1887 and had worked until the 1960s, it had then worked on and off until the early 2000s when it was serviced and electrical winding installed. It was now not striking and initial investigations indicated a problem at the top of the clock. The person who rebuilt it in the early 2000s had been approached, if this was not fruitful another repairer would be approached. The meeting agreed the clock had to be repaired with the PC footing the bill.
- vi) **Dog Waste Bin – The Mead:** This had broken and the PC had agreed to purchase a replacement. The Clerk had ordered one which was due soon.
- vii) **Trees:** The trees on Clay Lane and The Mead were still to be inspected by John Osborne and AP said this was to be done this week, an additional tree

# Parish Council Meeting Minutes

by the allotments would be inspected. It was agreed any cutting should be left until September.

- viii) **Bus back better:** PT had circulated a report to the Parish Council which said the first step was to lobby the local transport authorities, this was more difficult for Rode as both buses that served the village came under two different authorities. It was agreed that as a Primary Village, Rode did not have a viable bus service. A survey of the village on bus use was planned for September as doing it before was thought to be unrepresentative of bus use/requirements as people were not currently using buses during the Covid pandemic. Cllr Oliver expressed concern over the timing of the survey as a decision on buses was to be made in October. She proposed a meeting was held with SCC's John Perriett.
- ix) **Brown's Ground:** Discussion was held as to whether the Parish Council should approach Andy Fussell to express an interest in it taking over and owning Brown's Ground irrespective of the current proposal to develop Barbara's Field. There was agreement that this could be a valuable village asset, however after some debate it was agreed that this might not be the most appropriate time to approach Andy Fussell. There were also questions over the possible ongoing costs of maintenance of the land, although these could possibly be minimal.

**8. Climate Emergency:** JM reported that he had got 6 people interested in joining the Steering Group but he still had to leaflet villagers and he hoped to do this in the next couple of weeks.

## **9. Highways:**

- a) The working group had met with Patrick Moss and although there was a lot of information and data on speed in and around the village this needed to be put together into a good case for speed limits. The A361, Rode Hill and Bradford Road were one issue and the High Street, Lower Street, Straight Lane and Church Lane were another issue. The proposal by Patrick Moss, although costing around £2,500 was considered necessary. But it would be put on hold until discussions had been held with Sara Davis at Somerset Highways as possibly Somerset could do some of the survey work and it would be good to clarify what would be required to install speed limits. It was agreed the Transport Group and Cllr Oliver would meet with Sara Davis and that the Clerk write to Sara Davis on this issue.
- b) County Roads had responded to the concerns over HGVs using Lower Street and this indicated that to install any signage would require a Traffic Regulation Order (TRO) which would require the support of the Police, the installation of any signs would also be a lengthy and expensive process

# Parish Council Meeting Minutes

- up to £10,000. The meeting having considered this and the fact that the bakery (source of some of the HGVs) had now relocated out of Lower Street and also that SWP vehicles were aware of the problems, this would not now be pursued. A watching brief would be kept.
- c) Some pavement photographs had been taken, others still to be done.
  - d) The Sportsman had still to be adopted but a more positive response to Cllr Oliver's email had been received from Somerset. It was agreed the Clerk should continue to pursue this with Development Engineering at Somerset as a bond was in place to rectify any issues prior to the road being adopted by Somerset. It was agreed to keep this on the agenda.

## **10. Planning matters**

### a. New applications:

**2021/0807/TCA:** Works to trees in conservation area: 3 beech, 1 ash, 7 lime, 6 horse chestnut and 1 yew – Langham House. No objections, leave to Planning Officer

**2021/0858/FUL:** Erection of detached dwelling including associated alterations to 9 The Mead and provision of 2 car parking spaces – 9 The Mead. No objections, leave to Planning Officer.

**2021/0887/VRC:** Application to vary condition 17 (obscure glazing) of planning approval 2018/2015/VRC – 6 Stable Close. No objection, leave to Planning Officer.

### b. Mendip decisions:

**2020/1686/OTS:** Application for outline planning permission for the erection of up to 29 dwellings with associated access and landscaping works – The Mead/Merfield. Refusal.

**2021/0418/HSE:** Demolition of single storey extension to rear elevation and of existing garage to eastern elevation of house. Construction of two storey extension to eastern elevation – 24 Marsh Road. Approved.

**2021/0534/TCA:** 4 pleached hornbeams, reduce height by 1 – 1.5 metres – 17 High Street. No TPO required, approved.

**2021/0569/TCA:** Ash tree reduce height by 2 metres and reduce spread by 1.5 metres – 1 Halfpenny Row. No TPO required, approved.

**11. Calm Engineering and drainage:** JM reported that some small extra surveying was to be done on the village outskirts next week. An update on the work done would be in the next issue of The Link and a report was due from Calm with update letters being sent to all houses.

**12. Church Farm access to village/footpaths and playing field:** There was no update on the hoggin path but this would be pursued. A report on the

# Parish Council Meeting Minutes

playing field would be given at the Parish Meeting on Thursday; draft proposals for the development of the S106 land had been issued and these were on the Village Facebook site (and subsequent to the meeting on the Rode PC site [under planning]).

**13. Parish Council website:** The Chair reported that this still had to be progressed; contact was being made with website developers.

**14. Police Beat Manager:** The monthly report was noted.

**15. Financial matters:**

i) The Clerk reported that he had still not heard back from the NatWest, but he thought the new signatories (EB and MS) had been approved.

ii) It was agreed to retain the allotment fee at £50 and the Clerk would send the invoice.

iii) The asset register was agreed and this would be uploaded to the website.

iv) The following payments were agreed:

Eagle Grounds Maintenance	£725.12
Clerk salary	£220.82
HMRC PAYE	£55.00
Peter Travis (Zoom subscription)	£14.39
Elaine Butler (materials for Hoedown)	£48.01
Hugh Williams (paint and brushes)	£65.85

v) The Annual Governance and Accountability Return – AGAR Section 1 Annual Governance Statement 2020/21, previously circulated, was agreed and the Chair and Clerk would arrange signing off.

vi) AGAR Section 2 Accounting Statements 2020/21, previously circulated, were approved and the Chair and Clerk would arrange signing off.

vii) Rode Parish Council had a turnover of less than £25,00 and therefore the PC could exempt itself from a Limited Assurance Review under Section 9 of the Local Audit (Smaller Authorities) Regulations 2015. It was agreed to complete the Certificate of Exemption – AGAR 2020/21 Part 2 and the Chair and Clerk would sign this off. The Clerk agreed to arrange for an internal audit of the accounts.

**16. Date of Next Meeting:**

The next meeting will be a physical meeting in the main hall of the Memorial Hall at: **7.30pm on Monday 7<sup>th</sup> June.** Please note the change of day for the meeting.

The Meeting closed at 10.00 pm. *Website: [rodeparishcouncil.webs.com](http://rodeparishcouncil.webs.com)*

# Parish Council Meeting Minutes

---

## MINUTES OF RODE PARISH COUNCIL ANNUAL PARISH MEETING HELD ON THURSDAY 6<sup>TH</sup> MAY 2021 AT 7.00 PM (virtual meeting on Zoom)

**Presiding: Peter Travis**

**Clerk: Hugh Williams**

8 Parishioners, 7 Councillors and County and District Councillors

**Apologies for absence:** Cllr E Butler

**Minutes of 2019 Parish Meeting:** These were approved and signed by the Chair. Note no meeting held in 2020.

### **Somerset County Councillor Report**

Cllr Oliver said that she always enjoyed working with Rode Parish Council. She was always willing to help residents and would in particular continue to give support to highways and bus issues. She said that the team at Rode was strong and also there was a very good community spirit within the village, which was probably stronger than many other villages. She hoped that there would be less planning issues in the future but unfortunately this was probably unlikely. However next year would hopefully be easier than this one with remote meetings, which had been difficult for everyone given the Covid19 virus.

### **District Councillor Report**

Cllr Lund endorsed Cllr Oliver's view and she had also enjoyed working with Rode PC. She always found the meetings to be inclusive with volunteers easily found. She added that the new Councillors came forward willingly to fill the 3 vacancies created during the year. She was particularly pleased that Rode had declared a climate emergency this year.

### **Memorial Hall Report** (forwarded by Duncan McLennan, Chairman)

Despite the closure of the Hall for most of the year due to Covid19 the finances of the Memorial Hall remained good with a rise in reserves to £37,351.12, thanks to the government grants for village halls that had been distributed to the Hall by Mendip. Some general maintenance had been carried out during the year. Thanks were given to Tim and Helen Flocks and who had left the Committee. Nicola Radcliffe was the new Secretary and Kate Livingstone now ran the Hall bookings.

### **Playing Field Report** (Delivered by Nigel Clarke, Chairman)

During the last year expenditure had risen due to the requirements to repair the fencing and install a new gate. A concern had recently arisen due to a sink hole



# Parish Council Meeting Minutes

appearing in the hard standing by the Scout Hut which requires attention. Inspections, by RoSPA, of the play equipment had been conducted and some suggestions for improvements made.

The Committee had drawn up plans for the development of the new S106 land given to the Playing Field following the building of the Church Farm Estate. These plans had now been published and Option 3 would be pursued as this had the best engagement with the village. Funding remained a problem to get this off the ground.

Thanks were given to all the Trustees for the time (and money) that they gave. Thanks were also given to Rode Post Office, The Cross Keys and the Sharmans for helping raise funds through the lottery.

Some concerns were expressed over the quality of the grass cutting by Eagle with grass being left on the field, previously there had been problems with grass cuttings being put in the drainage ditch.

Thanks were given to Clive Harrington for the clean-up of the village and donating part of his costs to the Playing Field.

## **Scouts Report** (Delivered by Howard Russell)

This had been a unique year, with no meetings since last March until the end of April this year. It was very difficult to keep children 2 metres apart and meetings of all the scout groups depended on the weather being good as they were taking place outside. Thanks were given to Elizabeth Osborne for leading the Cubs who had now stood down. Leaders of all groups were sought. Although a number of children had left during the lockdowns a waiting list had built up and spaces were being filled. Thanks were given to Clive Harrington for his donation. The major issue facing the group was to replace the existing hut which was 50 years old and also now too small; fund raising would need to take place.

## **Chairman's Report** (delivered by Peter Travis)

There had never been a year like this, but the Parish Council (PC) had been able to continue to meet virtually. The PC had been confronted by two major planning applications which had necessitated extra meetings either virtually or outside on the playing field. Transport assessments were made as part of the cases against these developments and these along with a large number of objections from villagers had resulted in Mendip refusing development at The Mead/Merfield site. The Barbara's Field development is still awaiting Mendip's decision.

Rode also set up a 'Buddy Scheme' to help and support to those sheltering during the Covid19 pandemic, there was very good support for this and fortunately little demand. Thanks must also go to the village shop and Cross Keys for providing home deliveries of food and meals during the pandemic.

During a busy year, the PC got involved in the Inspector's hearings in the Mendip Local Plan Part 2 which was proposing extra housing in the area. Due

# Parish Council Meeting Minutes

to sufficient financial reserves (built up over the last 10 years) the PC was able to call on professional legal help in putting the case for Rode not to have extra housing development.

Thanks were given to Terry Morrow, Pat Banwell and Andy Hooker who had all stood down from the Parish Council, especially Terry and Pat who had helped draw up the Neighbourhood Plan and also been vice chairs of the PC. Their experience would be missed but three new, very able, Councillors had come forward to fill the vacancies.

Following road and pavement clean up by Clive Harrington and his team the PC had now employed a Lengthsman to keep the village clean and do repairs. Additionally, a 'Hoedown' had taken place and further were planned to keep the village tidy.

Speeding in and around the village was still a major issue to be resolved.

Thanks were given to both District and County Councillors for their continued help on a range of issues and also for their attendance at most PC meetings, the village was lucky to have them. Thanks were also given to the Parish Clerk whose workload had been unusually heavy, given all the extra meetings and the many issues raised during the past year.

## **Financial Report** (delivered by Clerk, Hugh Williams)

The PC had for the first year for a long time spent more than it had received with major expenditure on legal help and transport consultants. However, the good reserves had enabled the PC to act quickly and employ these professional services when required.

The reserves at the start of the year had stood at £39,232 and now, at the end of March, stood at £37,487.

[Full reports from the above were circulated to the Parish Council.]

## **Parish Discussion Forum**

- i) **Adoption of The Sportsman:** There was concern expressed over the length of time this was taking and the need to resolve the drainage issues associated with it. It was reported that Somerset County Council were aware of this and recently there had been a more positive response on this issue. A bond is in place, following the developer going out of business, and this should be used to ensure adoption can go ahead. This issue would remain on the PC agenda.
- ii) **Trees:** A number of trees required attention and the landowners would be approached. However, concern was expressed over possible enforcement by Mendip where the Enforcement Officer was being replaced by agency staff and might not be as effective. Permanent staff are not being taken on as Mendip will cease once a new Unitary Authority comes into being.

# Parish Council Meeting Minutes

- iii) **Neighbourhood Plan:** A question was raised as to its status as 80% of the village had supported it. In response it was said that the Plan was still important and is a material consideration with regard to planning applications, it had been used in defence against development of both The Mead/Merfield and Barbara's Field applications. The problem was it could not any longer specify where development took place and with Mendip not having a 5-year housing plan there was additional pressure to build more homes.
- iv) **Traffic calming:** It was agreed that the Parish Council needed to put more pressure on introducing further speed limits within the village and a small group had been formed to take this forward and meetings would be held with Somerset Highways. It was noted any proposed new speed restriction measures would require village wide consensus.
- v) **Responses to planning applications:** General thanks were given to all those who had helped organise objections to the 2 major planning applications that had come up in the last year. It was thought the volume and quality of the objections will have been noted by Mendip Planning.

## Minutes of the Annual Meeting of Rode Parish Council Held on Thursday 6<sup>th</sup> May 2021

**Presiding: Peter Travis**

**Clerk: Hugh Williams**

7 Councillors, County Councillor, District Councillor and 6 Parishioners

1. **Approval of minutes of 2019 AGM:** Approved and signed by the Chairman.
2. **Chairman:** Mike Salmon was elected unopposed as Chairman for 2021/22
3. **Vice Chairman:** Andy Pickett was elected unopposed as Vice Chairman for 2021/22
4. **Signing of forms:** The Chairman and Vice Chairman signed the Acceptance of Office forms.
5. **Thanks:** Peter Travis was thanked for being a good Chairman especially during such a difficult year.

The meeting closed at 9.10 pm

# Parish Council Meeting Minutes

## HIGHLIGHTS FROM TELLISFORD PARISH MEETING (TPM) AGM

On Friday 21<sup>st</sup> May, 16 residents of Tellisford and Woolverton attended the Parish Meeting's AGM, held under Covid-19 compliant conditions in Tellisford Church instead of the covered parking bay at Southwinds, Woolverton due to inclement weather. We were joined by our District Councillor. Sixteen households and our County Councillor sent apologies.

Ray Floyd was re-elected Chairman and Ash Morrell was re-elected Vice-Chairman. The meeting still lacks an Honorary Clerk; with no-one else offering to take on this role, Anthony Battersby agreed to continue as Acting Parish Clerk. The three members of the Planning Sub-Committee - Anthony Battersby, Nicholas Diggle and Mark Shaw - were re-elected to continue serving on this sub-committee.

Following up Mendip District Council's initiative to link up non-vehicular routes, our Clerk had asked MDC to connect Woolverton with FR15/3a (to Scutt's Bridge). MDC said they would add it to their already long list, but that they lacked funds for carrying out this initiative.

The Planning Sub-Committee's report since the last Parish Meeting on 7<sup>th</sup> September 2020 is summarized below:

Application	Site	Subject and Outcome
2020/1115/CLP  APP/Q3305/X/ 20/3264330	Lower Chatley Farm	Certificate of Proposed Use/Development in connection with caravan park: MDC decided development is not lawful in November 2020. Applicant appealed in January 2021
2021/0233/FUL	Lower Chatley Farm	Application for holiday park comprising 15 holiday lodges, 2 lakes with central cascade and footbridge, access track, and associated landscaping: pending
2020/1450/HSE 2020/1451/LBC	Church Farm, Tellisford	Conversion of agricultural barn to residential ancillary accommodation including repairs and alterations to barn, demolition and alterations to extensions, new extension: approved Nov 2020
2020/2319/APP 2020/2321/APP	Church Farm, Tellisford	Details reserved by conditions on planning consent 2020/1450/HSE regarding bat box, roofing, mortar mix, walling, ducts, pipes, rainwater goods: approved December 2020
2020/1526/CLP	Butler's Cottage, Woolverton	Install Velux skylights: approved October 2020
2020/1836/FUL	Land at Henhambridge Farm, Woolverton	Change of use of the land and conversion of existing farm building to equestrian purposes, the formation of a riding arena and access track, siting of a horse walker and temporary equestrian workers' dwelling and associated landscape works: approved November 2020

# Parish Council Meeting Minutes

Application	Site	Subject and Outcome
2020/2458/APP	Church Mead, Woolverton	Application for bifold doors and rooflights: refused January 2021
2021/0481/FUL	Land at Laverton Lane, Woolverton	Regularisation of field shelters as stables and concreting of yard between stables: approved April 2021
2021/0527/HSE	The Rydings, Rode Manor	Conversion of existing office out-building to self-contained annexe: pending
2021/0878/FUL	1 The Leazes, Woolverton	Conversion of dwelling into 2 dwellings, demolition of existing conservatory and associated works: pending

Applications for tree surgery at All Saints' Church, The Old Rectory, Westerley and Glebe Barn were approved, and a second one for Glebe Barn remains pending: all are in Tellisford, a conservation area.

The repaired wall behind Woolverton War Memorial has blended in and tree surgery completed on the lime tree. When Covid19 restrictions ease, Ray Floyd will move ahead with plans for Woolvertonians to look after the memorial, where weeds are already emerging between the paving slabs. MDC mows the grass from time to time. The landlord of Rode Mill had offered to raise funds during Remembrance Day 2020 but the pandemic meant the planned event was cancelled, but could be rescheduled for 2021. This led to a question about when Wadworth Brewery would reopen The Red Lion: they are aiming for the end of May, and will take care of the dead trees discussed at the last parish meeting.

After a brief discussion of risks, the meeting accepted the chairman's view that the level of risk he faces does not justify renewing his insurance cover (£12,000,000 for a premium of £84 last year).

Acting Clerk reported that an agricultural contractor had hit and severely bent the "No Through Road" finger of the fingerpost at Tellisford crossroads. He wrote to Somerset County Council who said they would not pay for repairs but were keen for damaged fingerposts to be repaired. SCC supplied a list of qualifying repairers and one in Ebbor has an extensive store of matching fingers, one of which they can re-letter for £110+VAT, which the agricultural contractor has agreed to cover.

The last remaining council property in The Leazes appears to be coming up for sale, but there is a continuing issue with the sewage works.

Councillor Barbi Lund reminded the meeting to use their votes for the future of Somerset's administrative structure: a unitary authority or two councils?

*Rachel Feilden,*  
Hon. Minutes Clerk

# ...and finally

## WHERE IN HARDINGTON VALE?

Where, in Hardington Vale, would you see this lane? Did you recognise the view in last month's photograph? It was Turnstone Close on the Church Farm Estate. If you have a photograph of a part of Hardington Vale that you would like us to feature, email it to [link@rodevillage.com](mailto:link@rodevillage.com).



### Sudoku

			3				4	
5		6						
				2				7
8					7			
		5		6		9		3
	2		9				8	
	3			7				5
9			4		1		7	
		2				6		

### Last month's Codeword

2	A	26	D	13	R	5	I	26	F	21	T	1	S	20	Q	4	U	2	A	6	W	16	K
26	D						4	U		1	S		4	U		14	X					10	N
22	J	2	A	16	C	16	K	26	D	2	A	6	W	24	E	14	X	5	I	23	L	24	E
2	A			9	O		7	G		4	U		21	T		2	A			24	E		
16	C	9	O	4	U	11	P	E		10	N	4	U	3	Z	3	Z	23	L	24	E		
24	E			13	R					7	G		2	A								7	G
10	N	2	A	21	T	4	U	13	R	24	E	4	U	23	L	21	5	I	19	M	9	O	
21	T					24	E		15	C						25	D				12	V	
		7	G	2	A	21	T	24	E	4	U		8	B	2	A	5	I	3	Z	24	E	
1	S			16	C			23	L	13	R		2	A		9	O				13	R	
21	T	18	H	9	O	1	S	E		12	V	5	I	21	T	2	A	19	M	5	I	10	N
4	U			13	R			15	C	24	E		9	O								9	O
10	N	5	I	10	N	24	E	21	Y	17	Y	4	U	10	N	26	F	2	A	5	I	13	R

## POEM OF THE MONTH

Strawberries that in gardens grow  
 Are plump and juicy fine,  
 But sweeter far as wise men know  
 Sprung from the woodland vine.  
 No need for bowl or silver spoon,  
 Sugar or spice or cream,  
 Has the wild berry plucked in June  
 Beside the trickling stream.  
 One such to melt at the tongue's root,  
 Confounding taste with scent,  
 Beats a full peck of garden fruit: Which points my argument.



*Robert Graves, 'Wild Strawberries'*

## Jennie Gilbert Pottery Courses Wiltshire & France

4 St. Martin's Workshops, Manor Farm, Fifield Bavant, Broadchalke, SP5 5HT

We run several courses in the Chalke valley and the Lot in South West France.

Choose from 2 or 4 day courses in Spring and Autumn.

Look at my website for details, dates and prices

Or pop in to the workshop for a chat.

01722 780402

[jennie.gilbert@yahoo.co.uk](mailto:jennie.gilbert@yahoo.co.uk)

[www.jenniegilbert.co.uk](http://www.jenniegilbert.co.uk)



## Bewley Funeral Directors

*Our family are here for your family*



3<sup>rd</sup> generation family business since 1970 providing Simple to fully Bespoke Funerals. Our friendly team offer home visits helping you and your family with all necessary support and guidance.

For 24 hour service call 01225 353525

Manvers Street Trowbridge [www.bewleyfunerals.com](http://www.bewleyfunerals.com)

# Flourish Yoga

## Hatha Yoga with Selina Ratcliffe

Every Wednesday starting

Wednesday 2nd June 2021

10.00am - 11.00am

Rode Village Hall

Please email me to book your mat space in advance or if you have any questions  
[flourish@selinaratcliffe.com](mailto:flourish@selinaratcliffe.com)

£10pp

"Selina is a caring, kind, positive and enthusiastic yoga teacher who supports everyone in her yoga class whatever their age and ability." ~ Jess, Bristol

[www.selinaratcliffe.com](http://www.selinaratcliffe.com) | fb: Yoga with Selina Ratcliffe

# MATTHEW'S MOWING & MORE

MOWING, STRIMMING,  
GARDEN CLEARANCE,  
AND MORE!

ALL JOBS CONSIDERED,  
COMPETITIVE RATES,  
PUBLIC LIABILITY  
INSURANCE COVERED.

MOBILE :  
07972344720

## PROPERTY & BUILDING MAINTENANCE

**M Stock**

**01373 672090**

**or 07801 355384**

I can give you a free estimate &  
I have over 30 years experience

Painting inside & out  
and general decorating

Path laying, wall & patio building

Brick & Stonework

Re-pointing work

Roofing

Fencing: Chain link, wooden or panel

Garden Maintenance

£5 million public liability insurance



# GREEN MAN



**Professional  
Eco-friendly  
Carpet,  
Rug, Hard Floor,  
& Upholstery  
Cleaning**



**FROME: 01373 470416**

**[www.greenmancleaning.co.uk](http://www.greenmancleaning.co.uk)**



## ELECTEC



### electrical and technical services

- Domestic and commercial work
- Local electrician
- Homeowner electrical installation condition reports for home or rental (EICR)
- Rewire, upgrade or bespoke
- Maintenance, adapt or fix
- A company that strives to corroborate



**E** [jeremy@electec.co.uk](mailto:jeremy@electec.co.uk)

**T** 07834 830591

**C** [www.electec.co.uk](http://www.electec.co.uk)



## Sharon's Foot Clinic



**S.A.C Dip FHPT S.A.C Dip FHPP  
Fully Insured and Highly Trained**

**For The Professional Treatment Of:**

**Corns • Callus • Cracked Heels • Athletes Foot  
Fungal Infections • Thickened Nails • In growing Nails  
Diabetic Foot Care • Verrucas • Nail Cutting • Nail Reconstruction**

Contact **Sharon** on **01373 836734** or **07728 200402**

**Clinic Appointments at 12 Sunny Hill Nunney BA11 4ND**

**Home Visits also Available.**

# GARAGE DOOR & PRE-FABRICATED BUILDING SPECIALISTS

**WE'LL RECOMMEND A SOLUTION THAT SUITS YOU, NOT US**

That means we listen to your **needs**, take on board your **wants** and, very importantly, take into account your **budget**. We can then advise you on the best way to go; whether that be a complete bespoke garage, top of the range automated door, a basic up and over or simply a repair.

So with direct access to the top manufacturers, a huge stock of spare parts for all makes and our own teams of experienced engineers, you can be assured of the result you want.

**Trading Standards Approved Trader**

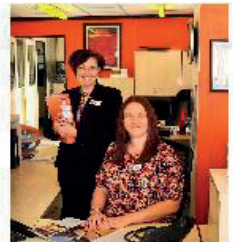


**SDS**  
Secure Door Services

Call Debbie or Nicola on **01373 580298**  
Showroom: Radstock Rd, Midsomer Norton, BA3 2AD  
[www.sdsgaragedoors.co.uk](http://www.sdsgaragedoors.co.uk)



For details of our pre-fab buildings please visit: [www.sdsconcretegarages.co.uk](http://www.sdsconcretegarages.co.uk)



Do you need a  
Plumber? Call



**PAUL ANTELL  
PLUMBING**

**07890 366832  
01373 467427**

Professional, Reliable, Friendly & Local  
paulantellplumbing@talktalk.net  
www.paulantellplumbing.co.uk

### Wash'd Up Crocks

Whatever your event,  
large or small, I can supply  
**Crockery, Cutlery, Glassware,  
Linen and Vintage Crockery**

With reasonable rates  
and **NO** washing up - it pays to hire  
Delivery/Collection service available

For a quotation contact Helen Shorten  
Office - 01373 830141  
Mobile - 07746410401  
Email - info@washedupcrocks.co.uk  
**www.washedupcrocks.co.uk**

## Coffee with an Architect?

Thinking about a project?

An Architect with over 20 years' experience and a genuine love of historic buildings and coffee, I would be happy to meet and discuss your plans and ideas.

For a free initial chat please contact:

Anna Hammond BA DipArch MSc ARB  
e: annahammond@ymail.com  
m: 0772 941 1360 t: 01373 834439





**24/7 Personal service from a family of Independent Funeral Directors**

Proud to have served our community for over 20 years

Golden Leaves Guaranteed Plans available

Cote House, 51 Timbrell Street, Trowbridge, BA14 8PN Telephone 01225 775259

16 Warminster Road, Westbury, BA13 3PB Telephone 01373 864944

[www.elizabethsnell.co.uk](http://www.elizabethsnell.co.uk)

[info@elizabethsnell.co.uk](mailto:info@elizabethsnell.co.uk)

**BECKINGTON PHYSIOTHERAPY PRACTICE**  
**Has relocated, come and see us at our new address:**  
**Shawford Farm (A36), Beckington, BA11 6SQ**

**Keep active with Physiotherapy**

**Lesley Fussell MCSP, SRP, AACP**

With over 30 years of experience specialising in treatment  
of muscle and joint problems including:  
**Back and neck pain - Work and posture related disorders -**  
**Sports injuries - Arthritic conditions -**  
**Joint & muscle problems following accidents and surgery. -**

**Home visits can be arranged.**

**Telephone: 01373 831483**

**Email: [lfussellphysio@gmail.com](mailto:lfussellphysio@gmail.com)**

# Handyman Services

home & garden maintenance

for all your home improvements  
and repairs inside and out.  
decorating~carpentry~plumbing  
tiling~flat pack~gardening~ponds  
decking~sheds~fencing and more.

call Gary.

**07747 771016**

**01373 859930**

handyman-services-gary@outlook.com

## PHYSIOTHERAPY & ACUPUNCTURE in Rode

**Merete Bates** MCSP, SRP

**Japonica Clinic**  
**The High Street**

**07734058025**

[www.japonicaclinic.com](http://www.japonicaclinic.com)  
[info@japonicaclinic.com](mailto:info@japonicaclinic.com)



**SEYMOURS COURT**

**Bed & Breakfast and  
Wedding Reception  
Venue in Beckington**

**A marquee venue for  
your special day  
or stay with us in our  
luxury accommodation**

**Contact:**

**01373 830466**

**or 07712 580586**

[info@seymourscourt.co.uk](mailto:info@seymourscourt.co.uk)  
[www.seymourscourt.co.uk](http://www.seymourscourt.co.uk)

## Village Window Valet



*Are you looking for a  
window cleaner?  
Call Adam for a  
fast & reliable quote*

**01373 830877**

**07801 151207**

**dumbcara@hotmail.com**

Adam Fligel, 2 Green Park, Church Lane, Rode, Nr Bath, Somerset

**WINDOW, CONSERVATORY, FASCIA  
& GUTTER CLEANING SERVICES**



# FROME AREA BUILDING SUPPLIES LTD

01373 831550 [www.fromeareabuildingsupplies.com](http://www.fromeareabuildingsupplies.com)

A truly independent supplier of building and DIY materials for any project around the home or for any building projects

Stocking over 3000 products... Timber, Plumbing, Drainage, Landscaping, Construction, Electrical, Decorating and much, much more

Located just outside Rode off the A361

We offer a free delivery service in the local area

Come and pay us a visit or take a look at our website featuring many of our products



# FROME AREA BUILDING SUPPLIES LTD

01373 831550 [www.fromeareabuildingsupplies.com](http://www.fromeareabuildingsupplies.com)

## LEOZAMP & CO

1 LANGHAM PLACE, RODE

T: 01373 830233

**For all your electrical requirements.  
Rewiring, Repairs, Sales & Public Address,  
Intruder Alarm Systems.**



**For domestic appliance repairs call:  
Domesticare 01373 467351**

# Brian Brewer

Carpet & Upholstery Cleaning Specialist Est. 2002

Carpets

Rugs

Sofa's

Mattresses

Commercial & Domestic

Spot Cleaning

Stain Removal

Stain Protection

Flea Treatments

Fully Insured




26 Grove Mead, Frome, Somerset BA11 4BU  
Tel: 01373 300642 | Mobile: 07866 433365  
Email: brewer.brewer54@gmail.com



*Beckington Motors*  
*Keeping you on the road since 1960*



- Local friendly garage
- Air conditioning
- MOTs and servicing
- Tyres, batteries and exhausts
- Vehicle diagnostics
-  Specialist Land Rover diagnostics
- 4 wheel laser alignment
- Range of courtesy cars
- Recovery service
- Fully qualified technicians
-  Calor Gas supplier

Bath Road, Beckington BA11 6SW | 01373 830238 | [www.beckingtonmotors.co.uk](http://www.beckingtonmotors.co.uk)  
Opening hours: Mon-Fri 8am-5:30pm, Sat 8:30am-12:30pm |  Find us on Facebook



Art Classes in Rode at Jan's Kitchen Table  
– tuition for catching the imagination

At Jan's Kitchen Table the tailor-made tuition is all about you, your individuality, discovering your imagination and having fun

Be inspired to paint, draw and illustrate with professional artist and illustrator Jan Nesbitt (BA Hons in Fine Art and a wealth of experience!)

Mondays and Tuesdays 10am to 1pm £16 per session  
– discounts for advance bookings

Friday evenings 7pm to 9pm £10 per session

Tel: 01373 830941 email: [jan@jannesbittartwork.com](mailto:jan@jannesbittartwork.com)

[www.jannesbittartwork.com](http://www.jannesbittartwork.com)

## HOLISTIC TREATMENTS

Available in the centre of Rode

Massage • Organic Facials •  
Bach Flower Therapy •  
Ear Candling



Celia Stewart  
07761-016521

[massage.bach@gmail.com](mailto:massage.bach@gmail.com)  
[www.bathholistic.co.uk](http://www.bathholistic.co.uk)



**House  
proud**  
of Rode

Home Improvements  
For all those jobs that make a house a  
home

- Carpentry, cabinet making, shelving, wooden flooring
- Furniture Restoration
- Interior/Exterior Decorating
- Bathrooms & Kitchens
- Gardens – patios & decking
- General Maintenance & DIY

Contact David Griffiths  
Mobile 07732 280940  
Home 01373 830366





Not all veterinary practices are the same

We are available to care for your pets, horses and animals 24/7

If your pet is overnight with us, they are never left alone

Garston vets - a truly independent approach to animal care for over 100 years.



Frome  
01373 452225

Melksham  
01225 617779

Trowbridge  
01225 754021

Warminster  
01985 213350

Westbury  
01373 301448



[www.garstonvets.co.uk](http://www.garstonvets.co.uk)



## Loose covers and curtains

Individually made to  
suit your requirements

Free estimates

Sue Hocking  
01225 865706

email:  
[sue.hocking@talktalk.net](mailto:sue.hocking@talktalk.net)



**CARPENTER AND JOINER**  
Martin Hale

Professional Carpentry Services  
Custom Made Joinery  
All Interior & exterior work  
Renovation & Maintenance  
Period properties a pleasure

City & Guilds Qualified

Quality service, free estimates

North Bradley  
01225 762495  
Mobile: 07768 838757  
Email: [Martin.hale27@gmail.com](mailto:Martin.hale27@gmail.com)

CALLING ALL LINK READERS

PLEASE SPREAD THE WORD!

WE WOULD WELCOME -

New Team Members

New Contributors

New Advertisers

New Readers - Copies On  
Sale @ Rode P.O.



Registered Member of The British  
Association of Foot Health Professionals

Foot Health Professional  
Kirsten Penny MCFHP MAFHP

Home Visiting Practice

**Corns • Hardskin • Thick Nails**  
**• Ingrowing Toenails**  
*and much more*

**Why Suffer?**

Call 07761 180819  
for an appointment  
(Frome and surrounding areas)

**For all your Foot Care Needs**

# THOMAS & ELLIS

Chartered Certified Accountants

A local family practice helping businesses  
and individuals for over 30 years

Contact Jo Ellis on:

01225 862259 or joanna@thomasandellis.co.uk

ACCA

[www.thomasandellis.co.uk](http://www.thomasandellis.co.uk)

**EXPERIENCED  
LOCAL  
HANDYMAN  
NO JOB TOO SMALL  
SHELVING, SHUTTERS,  
FLOORING, WINDOWS  
AND DOORS REPAIRED OR  
PURPOSE MADE. FLAT  
PACKS ASSEMBLED.**

Call Peter Stratford on  
01373 831260 or  
07870 453597

## **Woodland Carpentry**

- \* Fitted Kitchens
- \* Worktops
- \* Bedroom Furniture
- \* Stud Partitions
- \* Door Linings
- \* Doors Hung
- \* Skirting Boards

**And much more, just ask**

**Call Kevin Page**

**On**

**07944 109397**



## **Downlands Tree Surgery**

*Expert Tree Care*

- Skilled Pruning
- Precision Tree Removal
- Tree Stump Removal
- Qualified & Insured
- Scrub Clearance
- Immaculate Clear Up

For tree advice and a prompt quotation  
Telephone Jon Burgess

**01985 841057**

## Need help keeping up with today's digital world ? Fed up with feeling frustrated, baffled or confused ?

"Kathryn has been supporting people and their tech gadgets for years, understanding the frustrations and confusion these can cause. Her skills in IT enable her to clearly explain and implement tech in everyday life to make things easier, for business and personal use or just fun.

Keeping in touch with how things change but always keeping it real and relevant."



Get confident and competent at using your tech with:

- one-to-one customized tuition
- expert technical support
- friendly affordable advice
- helpful purchasing guidance

Kathryn Price 07427 104249  
kathryn@ksptechcare.co.uk



**KSP**  
**TechCare**

GIFT certificates available

£25 per hour support  
(valid for 6 months)

Find out how YOUR tech can make life easier for YOU ...

## PLANS FOR EXTENSIONS

- Plans prepared for Planning Listed Building and Building Regulation applications
- We have over 35 years experience and are able to give good professional advice

For free initial consultation please contact:

**IAN SING**

MRICS MASI MCIQB MCIAT

ian@lerner-sing.com

01373 830836 / 07783345541

## Martin's Chimney Services



Professionally trained to sweep all types of chimneys and appliances

Fully insured, offering a tidy, clean and efficient service

Bird guards supplied and fitted

Insurance approved certificates issued

NACS Member

Tel: 01225 768969 / 07909 078500

Email: martinschimney@hotmail.com

www.martinschimneyservices.co.uk



## CABIN WORKS

One stop shop - Design - Planning - Supply - Build



- Add property value
- Fully insulated & installed
- 4m x 3m (wide range of sizes available)
- Electrics
- Large range of styles & finishes
- Options include internal fit-out
- [office@cabinworks.co.uk](mailto:office@cabinworks.co.uk)  
Graham: 07768020204

EVER THOUGHT OF A HOME OFFICE IN YOUR GARDEN?



### Botox and Injectables, Rode

Private clinic in Rode offering Botox and facial fillers. All procedures carried out by Dr Abby Burgess, an experienced NHS GP. Personal service of creating a fresh, more youthful, look.

Contact Dr Burgess for an initial appointment to discuss your needs.

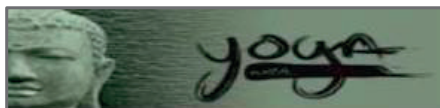
Email [monkleyaesthetics@gmail.com](mailto:monkleyaesthetics@gmail.com)

Website [www.monkleyaesthetics.co.uk](http://www.monkleyaesthetics.co.uk)

Tel/Text 07891 057074



Find Monkley Aesthetics on Instagram and Facebook



Live & Zoom Yoga classes with Stephanie  
- Rode's Yoga Teacher.

Choose to attend in person at Rode  
Memorial Hall ( £9/class) or in the comfort  
of your own home via Zoom (£8/class)

Every Tuesday 7.30pm & Friday 9.30am  
Plus get a video recording of the class sent  
direct to your inbox each week so you can  
practice as often as you like, at a time that  
suits you!

**FIRST CLASS FREE FOR NEWBIES!**

Contact:

yogawithstephanieharrison@gmail.com  
07780 601 381

Experienced teacher

Friendly and down to earth classes

All levels welcome & Mats provided

[www.facebook.com/yogawithstephanieharrison](http://www.facebook.com/yogawithstephanieharrison)

## Pelican Plumbing



Trusted and reliable local  
plumber. For bathroom  
installations, leaks, new taps,  
toilets and plumbing  
maintenance covering Bath  
and surrounding villages.  
call Simon Preston.

01373834991 or 07982051869  
[simon@pelicanplumbing.co.uk](mailto:simon@pelicanplumbing.co.uk)

**Nashblend Limited trading as:**

## West Country Tiling Company

**Pitched Roofing, Lead Work, Timber Treatment.**

**Conservation work is our speciality.**

**Tel: 01373 462224**

## S. A. M. SCAFFOLD

**Safety and Maintenance Scaffold,**

**We can meet all your scaffold requirements.**

**Tel: 01373 461511**

## Hardington Vale Church Services – JUNE 2021

DATE	TIME	SERVICE	LEADER
<b>Tuesday 1 June</b>	5.00 pm	<b>Laverton</b> , Evening Prayer	
<b>Wednesday 2 June</b>	8.30 am 6.00 pm	<b>Hemington</b> , Morning Prayer <b>Rode Chapel</b> , Informal Prayer	
<b>Thursday 3 June</b>	6.00 pm	<b>Norton St Philip</b> , Silent Prayer	
<b>Sunday 6 June</b>	9.00 am 10.30 am 11.00 am	<b>Norton St Philip</b> , Informal Breakfast <b>Rode St Lawrence</b> , Holy Communion <b>Laverton</b> , Holy Communion	Zoom - R & F Stewart J Robinson/C Walker A Holmes
<b>Monday 7 June</b>	9.00 am	<b>Norton St Philip</b> , Morning Prayer	
<b>Tuesday 8 June</b>	6.00 pm	<b>Tellisford</b> , Evening Prayer	
<b>Wednesday 9 June</b>	8.30 am 6.00 pm	<b>Hemington</b> , Morning Prayer <b>Rode Chapel</b> , Informal Prayer	
<b>Thursday 10 June</b>	6.00 pm	<b>Norton St Philip</b> , Silent Prayer	
<b>Sunday 13 June</b>	9.00 am 9.30 am 10.30 am 11.00 am	<b>Tellisford</b> , Matins <b>Mini Breakfast Church**</b> , NSP churchyard <b>Norton St Philip</b> , Holy Communion <b>Laverton</b> , Matins	Lay led S Rodford S Kivett/F Stewart Lay led
<b>Monday 14 June</b>	9.00 am	<b>Norton St Philip</b> , Morning Prayer	
<b>Tuesday 15 June</b>	5.00 pm	<b>Laverton</b> , Evening Prayer	
<b>Wednesday 16 June</b>	8.30 am 6.00 pm	<b>Hemington</b> , Morning Prayer <b>Rode Chapel</b> , Informal Prayer	
<b>Thursday 17 June</b>	6.00 pm	<b>Norton St Philip</b> , Silent Prayer	
<b>Sunday 20 June</b>	9.00 am 10.30 am 10.30 am 11.00 am	<b>Farleigh Hungerford</b> , Holy Communion <b>Rode St Lawrence</b> , Holy Communion <b>Norton St Philip</b> , Informal Worship <b>Laverton</b> , Matins	C Walker/J Robinson C Walker/J Robinson R Stewart/M Harrison Lay led
<b>Monday 21 June</b>	9.00 am	<b>Norton St Philip</b> , Morning Prayer	
<b>Tuesday 22 June</b>	6.00 pm	<b>Tellisford</b> , Evening Prayer	
<b>Wednesday 23 June</b>	8.30 am 6.00 pm	<b>Hemington</b> , Morning Prayer <b>Rode Chapel</b> , Informal Prayer	
<b>Thursday 24 June</b>	6.00 pm	<b>Norton St Philip</b> , Silent Prayer	
<b>Sunday 27 June</b>	9.00 am 10.30 am 11.00 am	<b>Tellisford</b> , Holy Communion <b>Norton St Philip</b> , Holy Communion <b>Laverton</b> , Matins	J Robinson/C Walker J Robinson/C Walker Lay led
<b>Monday 28 June</b>	9.00 am	<b>Norton St Philip</b> , Morning Prayer	
<b>Tuesday 29 June</b>	5.00 pm	<b>Laverton</b> , Evening Prayer	
<b>Wednesday 30 June</b>	8.30 am 6.00 pm	<b>Hemington</b> , Morning Prayer <b>Rode Chapel</b> , Informal Prayer	

\*\*Places must be pre-booked via [kidschurch@hardingtonvale.org.uk](mailto:kidschurch@hardingtonvale.org.uk)

## JUNE 2021 DIARY

Mon 7 Jun	7.30pm Rode PC Monthly Meeting, Main Hall, Rode Memorial Hall * please note June change of day and the return of physical meetings
Thu 10 Jun	10am Rode Walking Group see page 35 for details
Mon 14 Jun	11.25am-12.05pm Mobile Library, Memorial Hall see page 7 for details
Sun 20 Jun	<b>JULY LINK COPY DEADLINE</b>
Sun 20 Jun	Father's Day
Sun 27 Jun	2pm Rode Hoedown see page 12 & 45
Wed 30 Jun	RPF Lottery Draw The Cross Keys see page 19

## YEAR PLANNER

Sat 3 Jul	Grand Rode Duck Race see page 6
Sun 4 Jul	Grand Rode Duck Race see page 6
Sat 10 Jul	2pm Jumble Sale. Rode Playing Field Pavilion see page 5
Sat 31 Jul	10.30am St Mary's Laverton Church Fete see page 45
Mon 30 Aug	BANK HOLIDAY - Summer Bank Holiday Rode Village Day see page 6
Sat 25 Dec	Christmas Day
Sun 26 Dec	Boxing Day
Mon 27 Dec	SUBSTITUTE BANK HOLIDAY (Christmas Day)
Tue 28 Dec	SUBSTITUTE BANK HOLIDAY (Boxing Day)

		<b>Jun 2021</b>			
Mon	Tue	Wed	Thu	Fri	Sat
	1	2	3	4	5
6	8	9	10	11	12
14	15	16	17	18	19
21	22	23	24	25	26
28	29	30			



One number for all

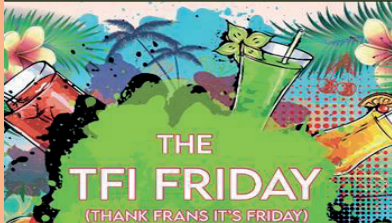
Somerset's Local Authorities  
**Coronavirus support helpline**  
**0300 790 6275**

Available 8am to 6pm, seven days a week



**Is back!**  
**Wednesdays 9.30-11.00am**  
**see page 23**

SEE PAGES 6 & 44 FOR DETAILS



**THE TFI FRIDAY**  
(THANK FRANS IT'S FRIDAY)

*Please send copy for the July 2021 issue of 'The Link'*  
 via email to [gillhleonard@aol.com](mailto:gillhleonard@aol.com) or deliver to 1 Lower Street, Rode BA11 6PU  
 latest Sunday 20<sup>th</sup> June 2021.