

# The Link

The magazine for Rode, Tellisford, Woolverton and  
Farleigh Hungerford, part of Hardington Vale



**DECEMBER 2021/JANUARY 2022**

A Full List Of Christmas Church Services

-----  
Details Of Christmas Events

-----  
Community Orchard Update & A Plantathon!!

-----  
A Mystery Murder Play & A Panto In 2022

**...and so very much more local news and info inside!**

**£1**

## PARISH OF HARDINGTON VALE

### RECTOR

Rev Caroline Walker  
The Rectory, Vicarage Lane,  
Norton St Philip, BA2 7LY  
01373 834258  
carolinehwalker@btinternet.com  
Day off: - Friday

### CURATE

Rev Jo Robinson  
The Old Rectory, 38 Church Lane,  
Rode  
01373 831381  
321jorobinson@gmail.com

### READERS

Barbara Day  
Brewery House, North Street, NSP  
01373 834438  
Barbara.day04@gmail.com

Michael Harrison  
51 Fortescue Street, NSP  
01373 834086  
michael.harrison@bcs.org

### PARISH ADMINISTRATOR

Ros Clarke  
The Hub Office, Norton St Philip Church  
Mon, Tues and Wed 8.30am to 12.30pm  
01373 834488  
admin@hardingtonvale.org.uk

### PCC TREASURER

Nick Brown  
Norton St Philip Church BA2 7LY  
01373-834488  
Treasurer@hardingtonvale.org.uk

### PCC SECRETARY

Tony Day  
Brewery House, North St. BA2 7LE  
01373-834438  
secretary@hardingtonvale.org.uk

### ELECTORAL ROLL OFFICER

Ros Clarke

### PARISH WARDENS

(with specific responsibilities in brackets)  
David Lockley (pastoral&outreach) 01373 834414  
Christopher Todd (strategy) 01373-834856  
Geoff Banwell (finance) 01373 831139  
Chris Cloke (buildings) 01373 834917

### CHAPEL WARDEN

**Farleigh Hungerford:**  
Guy Hungerford 01249 701211

### Tellisford:

Rachel Fielden 01373 830322

### DEPUTY WARDEN

#### Role:

Sally Pickett 01373 831796

### ELECTED PCC MEMBERS

Andrew Morrison<sup>1</sup>, Barbara Day<sup>1</sup>, Robin Finlay,<sup>1</sup>  
Sharman Flindall<sup>1</sup>, Andy Filkins, Susie Filkins,  
Rachel Feilden<sup>2</sup>, John Flindall, Francis Green<sup>4</sup>,  
Rachel Stewart, Anne Harkness, Ros Lockley,  
Sally Pickett<sup>3</sup>, Michael Walker

<sup>1</sup> Deanery Synod Representatives

<sup>2</sup> Safeguarding Officer currently vacant

<sup>3</sup> Chapel or Deputy wardens at Farleigh  
Hungerford, Rode and Tellisford.

<sup>4</sup> with specific responsibility for Hemington  
churchyard

### CHILDREN AND FAMILIES WORKER

Sue Rodford (kidschurch@hardingtonvale.org.uk)

**THE LINK MAGAZINE** : is published by the  
Parochial Church Council which reserves the right  
to edit any material submitted for publication.  
Opinions expressed are not necessarily those of  
the PCC, the Rector or the Editor.

### Editor

Gill Leonard edits and produces The Link  
01373 831072 gillhleonard@aol.com

### Subscriptions/Distribution

Caroline Williams  
01373 831046 carolinewilliams205@gmail.com

### Advertising

Gill Leonard  
01373 831072 gillhleonard@aol.com

### HARDINGTON VALE WEBSITE

www.hardingtonvale.org.uk

Hemington and Hardington are in the care of the  
Churches Conservation Trust contact Helen  
Booker hbooker@thecc.org.uk 07831 873489

### RODE CHAPEL METHODIST- BAPTIST

**Minister:** Rev Tina Swire 01749 595759

**Secretary:** Bill Jackson 01373 830411  
rode.chapel@btinternet.com

**Key Holder:** Alison Hughes 01373 830244  
rode.chapel@btinternet.com/830411



## USEFUL COMMUNITY CONTACT DETAILS

Organisation	Contact Name	Contact Number
Allotments - Rode Rode Gardens Association	Lucy Travis (Chair)	831726/Lucy_travis@hotmail.com
Buddy Scheme (Rode)	Mike Salmon	831257/mikesalmon123@icloud.com
Community Speed Watch (CSW)	Malcolm Wood	830301/mwood17@uwclub.net
Cricket Club (Rode) Seniors	Andy Pickett	andypickett2013@gmail.com/07775 805546
Cricket Club (NSP) Youth & Seniors	Mark Finch	07867 191100
Friends of Rode and Norton Schools (FRANS)	Brandon Quentin-Hicks (Joint Chair)	brandon@bamboohouse.co.uk 07867 545720
Gardening: Rode & District Club	Averil Morrow	830686/averil.morrow@yahoo.co.uk
Ladies Group (Rode)	Pat Banwell	831139
Lunch Club (Over 60's)	Alex Sing	Asing_homeandgardens@hotmail.com/830836
Memorial Hall (Rode)	Bookings: Kate Robinson	rodehall@bananasoft.net www.rodevillagehall.co.uk
NSP Pre-School	Dawn Strand	admin@nortonpreschool.co.uk/834791
Old School Room Farleigh H'ford Over 60's	Dilys McKechnie Pat Smith	01225 754925 830559
Parish Council - Rode	Hugh Williams (Parish Clerk)	Clerk.rodeparishcouncil@gmail.com rodevillage.com/parish-council/
Parish Paths Liaison Officers	Cathy & Nick Taylor	candn800@btinternet.com
Playing Field/Pavilion (Rode)	Bookings: Mal Bertenshaw	rodepfbookings@gmail.com
Post Office (Rode)	Demi Ward	830321
RANS Running & Walking Club www.facebook.com/TeamRANS	Brandon Quentin-Hicks	brandon@bamboohouse.co.uk 07867 545720
Rode & NSP First School Federation	Headteacher: Georgina Muxworthy	830523
Rodevillage.com Website & Twitter Feed	George Berry	info@rodevillage.com http://twitter.com/rodevillage
1st Rode Scout Group Beavers Wed 4.45-5.45pm Cubs Thu 6-7.30pm Scouts Wed 7-8.30pm During school term time	Group Scout Leader: Howard Russell	hdrussell01@gmail.com 830640/07736 739680
Scouts Edor Explorer Unit Every other Tuesday 8-9.30pm in term time	James Osborne	jamesosborne1@live.co.uk 07773 280939
Village Agent	Nic Edwards	07946 461468/ nicolae@somersetccc.org.uk
Walking Group	Liz Dinnis	elizabethdinnis49@gmail.com/07788 656337
Community Transport & Local Government & Closest GP		
Community Transport	Mendip Community Slinky Bus Bookings Frome Community Cars	01749 880613/www.menfopcommunitytransport.co.uk 01749 880482 07596 591391
Mendip D C	General Enquiries	0300 303 8588
Somerset C C	General Enquiries	0300 123 2224
County Councillor	Linda Oliver (Conservative)	loliver@somerset.gov.uk/834210
District Councillor	Barbi Lund (Green Party)	Cllr.lund@mendip.gov.uk/07846 335636
Beckington Family Practice	Appointments T: 830006 Results 9.30-13.00/14.00-16.00 T: 867986	Enquiries and Emergencies T: 830316 Dispensary 8.30-13.00/15.00-18.30 T: 867987
NHS 111 24 hour medical care help	Contact 111 if you have an urgent T: 111 Online: 111.nhs.co.uk	medical problem and you are unsure what to do
Frome Rural Beat Neighbourhood Police Team	PCSO PCSO Supervisor Neighbourhood Officer	Russell.ford@avonandsomerset.police.uk/07547658018 Stephen.Reading@avonandsomerset.police.uk David.Cohen@avonandsomerset.police.uk

## Link Message

*This, our last issue of 2021, also covers January 2022  
- our next issue being February 2022.*

*2021 has seemed to whizz by and Christmas 2021 and  
the end of 2021 will soon be here, the end of another  
year of restrictions due to Covid.*

*Hopefully the Festive Season this year will be  
less affected than that of last year and we will  
again be able to participate and enjoy it  
as we did before Covid arrived.*

*Thank you to all our Contributors, Distributors and  
Advertisers for your invaluable help and participation in  
compiling, delivering and funding The Link. Our  
thanks also to all our Subscribers for their contribution  
to funding the magazine.*

*Wishing you all, and your families,  
a very Merry Christmas  
and a Happy, Healthy and Prosperous 2022.*

# Church Reflection & News

## REFLECTION - LIFE JOURNEY?

I am writing this in the middle of November. The trees are golden, the mists are fairly mellow, and agricultural equipment is relatively quiet as I walk the lanes. The world here in Somerset is quiet, no signs yet of the Christmas build-up, no illuminated trees or flashing gables as yet, no inflated Santa Claus's heavy breathing with the sound of an air-pump, no increase yet of parcel deliveries.

2000 years ago, perhaps things would have been very quiet in Palestine. But then things got busy, the people needed to pack their bags and saddle their donkeys (if they could afford one) so that they could travel to the place where they would register their existence so that the Roman rulers could decide how much tax to impose. Their goal was to be registered. In a similar way we see a build-up of activity towards Christmas, but not to be registered. Instead we are busy wondering what we are going to buy Great Granny and little Joe, whether the Christmas lights still work and where we can find a turkey and sprouts.

While in Somerset we remember that day as we rest, with our Christmas pudding – in Palestine something most remarkable happened for some at the end of their journey.

The last line of the poem “BC:AD” by U.A. Fanthorpe sums up beautifully what happened and what we remember (see overleaf for the whole poem). The people travelling for their registration “*Walked haphazard by starlight straight into the Kingdom of Heaven.*”

Now, as then, the mundane world of deliveries and sprouts, and the baggage of long journeys, are left behind. A baby was born in a crude shelter to an ordinary, earthly mother, and an extraordinary father – God in Heaven, with an earthly father Joseph to help care for him. The baby is King Jesus – and if we seek Him our world is turned upside down.



## Church Reflection & News

The Jewish people were longing to see a new world and a new King who would remove the hated Roman rulers. Jesus came to live amongst us, born amongst ordinary filth and corruption. This King came as a defenceless baby who learned carpentry to make a living. He came as a servant not as a conqueror.

He taught that the poor, the pure in heart, the grieving and the lonely were to be blessed. He taught us to rejoice in the flowers and the birds that neither weave nor spin.

He was born to die, to remove the Jewish law's requirement to make sacrifice of animals and crops as compensation for our selfishness.

He died that we might live.

And He rose again that we might live a different kind of life.

*"For God so loved the world, that He gave His only begotten Son, that whoever believes in Him shall not perish, but have eternal life".*

*Michael Harrison*  
Reader

---

### BC:AD

This was the moment when Before  
Turned into After, and the future's  
Uninvented timekeepers presented arms.

This was the moment when nothing  
Happened. Only dull peace  
Sprawled boringly over the earth.

This was the moment when even energetic Romans  
Could find nothing better to do  
Than counting heads in remote provinces.

And this was the moment  
When a few farm workers and three  
Members of an obscure Persian sect  
Walked haphazard by starlight straight  
Into the kingdom of heaven.

*U.A. Fanthorpe (1929 - 2009)*



# Church Reflection & News

## NEWS FROM ST LAWRENCE

It was lovely to see so many people turn out on Remembrance Sunday for the parade and the Service on the Green, and weren't we lucky with the weather?! It was very encouraging to see so many members of all the 1st Rode Major Scout Group out on parade and we were very fortunate to be joined by the army from Warminster.



We didn't hold Breakfast Church this month due to it falling on Remembrance Day and it will return on the 9th January at 9am. Everybody is welcome to come and join in with our delicious breakfast and informal worship.

No doubt December will be a busy month at St Lawrence as we look forward to all of the various Services during Advent and at Christmas. We have our Family Carol Service at 3 pm on the 19th December and our Outdoor Nativity starting at the top of Marsh Road on Sunday 12<sup>th</sup> December, also at 3pm.

If you would like to play a more active role in the Outdoor Nativity, either musically or playing a part, then please do contact me (Sally 831796), there's something for everyone – adults, children and animals!

There will be a Crib Service at 5pm on Christmas Eve in the Chapel, a Midnight Mass at St Lawrence at 11pm, and our Family Service on Christmas Day at 10.30am – please bring along any visiting family and friends. We look forward to seeing you at any of our Services. We are looking forward to having our Christmas Services in church again as we were not able to do this last year.

*Geoff Banwell and Sally Pickett*



**Ecumenical Holy Communion**  
**Wednesday 1st December 12.15pm at Rode Chapel**  
**and thereafter on the 1st Wednesday of every Month**  
**12.15 pm at Rode Chapel**

**Your support would be welcome**



# Church Reflection & News

## ANSWERS FROM SAFE PASSAGE, HV'S NATIONAL CHARITY

Safe Passage UK, a charity helping child refugees access legal routes to safety, is one of the three charities supported by Hardington Vale Parochial Church Council.



This November we had an opportunity to learn more about this charity.

On Saturday 6<sup>th</sup> November at a tea in Norton St Philip Church we saw a presentation on screen from Maya Alexander, the Development Manager at Safe Passage UK, and several video clips showing some of the 26 Young Leaders – all refugees or asylum seekers – who have drawn up eight action points. The eighth point invites the government to meet with them and others with lived experience of the issues, to discuss their recommendations in more detail. (Refer to [www.safepassafe.org.uk](http://www.safepassafe.org.uk) for more information.)

Unfortunately Maya could not come to speak in person, so the material she had sent was shown on the screen in St Lawrence Church Rode during the morning service on Sunday 7<sup>th</sup> November. The congregation had several questions (Q) which I emailed to Maya; here are her answers (A).

Q1. Is it just money that Safe Passage needs, or household goods, clothes, toys?

A1. Unfortunately, we don't take donations of goods and other physical things. However, linking up with someone in local groups and networks which do take physical donations would provide a good option.

Q2. If the children are orphans, can they be adopted in this country?

A2. Unaccompanied children who are resettled within their local council's care could be fostered or adopted. Children who arrive in the UK without their parents or carers usually go into the care of their nearest public authority and will often live with approved foster carers when there is no suitable family member or guardian to care for them.

Q3. Where are they housed when they arrive?

A3. If the children came via the family reunion then they will be living with family members who sponsored their arrival. Unaccompanied children are put into care under the local authority in which they arrive. However if that local authority cannot house them, they can be detained and moved to another local authority. There is a lot of outrage about this process, and the ramifications it could have on the child's wellbeing.



## Church Reflection & News

Q4. Do they have access to psychological help after the traumas of their journeys?

A4. Refugees are five times more likely to have mental health needs than the UK population (Refugee Council, 2021). Our team attend the arrivals of child refugees we've helped reunite with family, to make sure they have a welcoming face when they arrive in their new home and restart their life in the UK. In addition to the team checking in with the family to make sure everything is going OK, we have a volunteer Community Mentoring programme that helps refugees settle by helping them register with a GP, sign up for school or other specialist organisations that may be able to help them with specific problems they might be facing. One of our aims is to help child refugees become confident young leaders who organically participate in our campaigns and operations work.

Maya's material included a challenge to raise funds in December; see <https://www.facebook.com/groups/251728463600941/about> or look on their website.

The collections from Christmas Services will be shared equally between Hardington Vale's three charities: Focus Frome (local), Safe Passage UK (national) and The Mission to Seafarers (international).

Meanwhile Safe Passage continues supporting children trying to reach UK via legal routes, and after their arrival in UK, and welcomes any help that we are able to give through our fundraising efforts.

*Rachel Feilden*

Chapel Warden, All Saints' Church, Tellisford, member of HV PCC

---

Please see inside the back cover and page 76 for a full list of Hardington Vale Services during December and January.



# Parish News

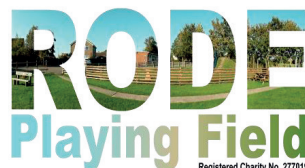
## COMMUNITY ORCHARD AND WILDLIFE GARDEN

Plans for the area next to the Playing Field are moving on. First, we are expecting delivery of 700 'whips' to plant to make a native hedge with a whole range of flowering and fruiting shrubs and trees. If any villagers have been growing trees in pots or have spare shrubs we'd love to incorporate them into the hedge or a copse. We would like to make a start planting before Christmas but realise this is a very busy time and the project is weather dependent. So we are asking people to get in touch if they are able to help during the early weeks of December and we will let them know when we are able to go ahead.

In addition we would like to plan a village wide "Plantathon" to include as many children and adults as possible on Thursday 30th December 2021. Refreshments will be provided. Remember, this is a community asset and we want everybody to take part and make it their own so bring your spade and get planting! See page 39 for more details.

Once we have the hedge in, we would like to plant wildflower seeds and start with yellow rattle in the same way as the re-wilding project next to the Memorial Hall. In the spring we hope to have more trees to plant. Then later in the year we can plan the orchard.

Please get in touch with Nigel:  
T: 830594 E: biz.nibex@btinternet.com  
or Averil:  
T: 830686 E: averil.morrow@yahoo.co.uk



*Averil Morrow and Nigel Clarke*

---

## ALLOTMENTS

The Parish Council has been made aware that we have an increasing waiting list for allotments in Rode, the waiting list now has more people on it than we actually have allotments so it is anticipated that it will take many years to satisfy even the current waiting list.



If anyone has a piece of land that they would consider being converted into allotments then please contact Rode Parish Council (contact details at the front of The Link) for further discussion.

*Mike Salmon*

For and on behalf of Rode Parish Council

## Parish News

### DOG WASTE AND LITTER BINS

There are eight dog waste bins situated around the village which are specifically for use for dog waste. Dog waste should be put in these (even if it means walking a few extra yards) and not in the general litter bins.



Concerns have been expressed over dog waste being put in litter bins especially the one outside the school in close proximity to young children.

The Parish Council has over the years invested in these dog waste bins to help segregate waste and it would be appreciated if everyone could **not** put any dog waste into the general litter bins. Thank you.

*Hugh Williams*

Clerk to Rode Parish Council

---

### CALLING ALL KNITTERS

Supporting the Mission to Seafarers - would you like to support Hardington Vale's international charity in a practical way?



One way is by buying Christmas cards and there's a wide selection available through the website.

Another way is by joining the amazing group of knitters who make hats, scarves and fingerless gloves which are given to seafarers to help them keep warm during long cold nights spent on the open seas. Each knitted item finds a home and the seafarers they're matched to are extremely grateful for the extra warmth! It's a great way of using leftover wool and making a real difference.

The website has straightforward patterns which are easy to download and the finished items can be posted to the charity.

Better still, our very own Andy Bowerman who is based in the Middle East returns here regularly and has guaranteed to deliver any items we collect direct to ships visiting Dubai.

If you're able to help or would like further information, please contact me on 01373 830362.

*Debby Hill*

# Parish News

## SOMERSET BUS PARTNERSHIP

The future is suddenly starting to look a lot brighter for bus services in Somerset. Over the past decade, public transport has not been an economic and developmental priority for Somerset County Council. Residents of this large, mainly rural county have been encouraged to rely on cars to get them to work as well as to shops, hospitals and places of entertainment and bus travel has dwindled accordingly. Bus journeys in the County have fallen by 43% over the past decade, we now have the second lowest bus journeys per head in the country and our bus services have the lowest satisfaction score.

But the Government's Bus Back Better strategy has prompted a major rethink with £3 billion of funding for bus improvements to be shared out between transport authorities across England (outside of London). Somerset County Council has responded and developed a highly ambitious Bus Service Improvement Plan (BSIP) and is asking the Government to fund the Somerset BSIP with an eye watering £163 million grant. You can read the 184pp document that Somerset has submitted justifying this bid here:

[www.somerset.gov.uk/roads-and-transport/transport-strategy](http://www.somerset.gov.uk/roads-and-transport/transport-strategy)

(the BSIP document can be found under the National Bus Strategy Section).

Even if the full amount of the Somerset bid is not granted, it is a recognition by Somerset County Council that its bus services need major improvement. Transport is the biggest emitter of carbon emissions in Somerset accounting for 44.1% of Somerset's total emissions. Given COP26, we must now make sure Somerset pursues the initiatives outlined in the Somerset Bus Service Improvement Plan that encourage a switch to public transport and away from single occupancy private cars. This will reduce our carbon footprint.

Somerset Bus Partnership was set up so that the voices of bus users from across Somerset are heard. We now have over 80 "bus representatives" from all parts of the county who ensure we understand and reflect the needs of towns and parishes across the county. We are looking for extra support within the Somerset Bus Partnership's core team. Have you had management experience of the bus industry or in a transport department within a Council? Please do get in touch if you have.

Somerset is now entering into an Enhanced Partnership with local bus service operators to implement the Somerset Bus Service Improvement Plan. Somerset Bus Partnership has been invited to attend the launch of the Bus Advisory Board in late November. This is Somerset's first step in establishing a partnership arrangement with local bus companies.

## Parish News

Somerset Bus Partnership will continue to work with bus users and will hold Somerset County Council to the ambitious and worthy goals now espoused in the Somerset Bus Improvement Plan.

If you would like to get in contact with us drop us an email: [somersetbuspartnership@gmail.com](mailto:somersetbuspartnership@gmail.com). Follow us on Facebook or via our website: [www.somersetbuspartnership.co.uk](http://www.somersetbuspartnership.co.uk)



*Peter Travis*  
Co Chair – Somerset Bus Partnership

---

### PLAYING FIELD LOTTERY

Playing Field Lottery winners in October 2021 are below, drawn by Hannah in the Cross Keys.

1<sup>st</sup> - £50.00 ..... Sally Pickett, Rode.

2<sup>nd</sup> - £25.00 ..... Katie Beyer, Rode.

3<sup>rd</sup> - £25.00 ..... Diana Russell, Rode.

Sunday Roast for 2 - David Hornsey, Rode, thanks again to Mark and Hannah.

If you would like a chance to get a slice of this action, remember only 200 tickets available and a share of £100 and two Sunday roasts, possible all for £1.00 per ticket! And remember you are supporting the Playing Field when you buy a ticket. Tickets on sale at the Post Office, or directly from Jane and I.

Next draws, Tuesday 30<sup>th</sup> November and Thursday 30<sup>th</sup> December. If anyone would like to do the draw or witness it from a suitable social distance then please feel free to do so. Just ask.

*Keith Sharman*  
830408

---

### 200 CLUB

The winners of the October 200 club draw are as follows:

1st prize £50 - Clive Upshall

2nd prize £25 - Rebecca Shorten

*Jan Jupp*



# Parish News

## DISTRICT COUNCILLOR REPORT DECEMBER 2021

“May you live in interesting times” - a blessing or a curse?



In this interesting, busy and unusual year some planning applications in Rode and NSP ward have kept us on our toes – and continue to do so. MDC has done the right thing in refusing a couple of the inappropriate applications and some of the officers' reports have been right on the button. But one appeal has already been made and things will continue to unfold – we will need to keep on our mettle. The background to much of this is Local Plan Part 2. For those of you who don't live and breathe this stuff here is a whistle stop refresher:

- January 2019: Mendip Council submits the final LPP2 for examination.
- January to March 2020: Consultation on Main Modifications.
- Nov/Dec 2020: The '2nd stage' of public hearings takes place “virtually”.
- September 2021: Inspector's Report with final Main Modifications received. The Inspector's Report confirmed that LPP2 is sound – but only with Main Modifications. It did remove the allocation in Rode (RD1) (huge relief in Rode) but confirmed the allocation of housing sites in NSP (NSP1) and Beckington (BK1). The saga continues - NSP residents will have the opportunity to participate in the discussion about options at the forthcoming public meeting.

Planning aside, one of the major things the four Somerset district councils have had to manage is the move to a single unitary authority – despite two thirds of the population voting for two unitaries rather than one. This has diverted time and energy from other, more important, council business. It is still unclear as to whether elections for the unitary Somerset Council will take place in 2022 or 2023 but the district councils will stay in place until 31 March 2023 with the new Somerset Council being vested in May 2023.

One area of lost focus is work on MDC's commitment to become carbon neutral by 2030. It was always going to be a tough call and both the pandemic, and the diversion of council restructuring have meant that the goals have been much watered down. As we all know district councils can only function properly within the framework and funding provided by central government. We've to hope that some of the cash from the Prime Minister's big four (coal, cash, cars, trees) finds its way down to local authorities to enable them to play their part in protecting our much-loved landscape and ecology. As global temperature increases and extreme weather events of 2021 have shown us, we need leadership and action as never before if we are to safeguard our planet for future generations. Meanwhile, Christmas is nearly upon us – may we all find space for some quiet and uninteresting time, some calm and tranquility.

*Barbi Lund*



# Parish News

## RODE CHAPEL CHRISTMAS BAZAAR

Hopefully, you all knew about this and were looking forward to it as much as we were. We had been planning the bazaar ever since last time...in November 2019! It was important to be as “normal” as possible, but much thought was given to peoples’ personal concerns over social distancing and safeguarding obligations. There was therefore a Gazebo outside for shelter if it rained. Cakes and bacon buns were served from the kitchen window and the usually crowded sale space was occupied by fewer stalls than on occasions in the past.

We are grateful to all our stallholders for supporting us again with a very impressive display of fabulous gifts demonstrating ingenuity, flair, skill and variety. They were all sharing tales of success at the end and commenting again on what a lovely community we have.



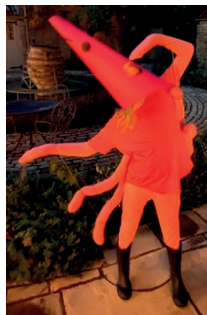
Thank you to all who came to support us: there was a steady throughput of people all morning, a lovely, friendly atmosphere and many merry meetings of friends old and new...just as it should be! We are hugely grateful to those who made cakes, donated raffle prizes, helped in the kitchen, fetched and carried and of course to all you lovely people who came to look round, spend some money, eat a bacon bun and chat. THANK YOU ALL and thanks for reading!

*Bill Jackson*

---

## LAVERTON NEWS

**Halloween Fun!** It was great to see so many of the village children enjoying themselves - dressed up in their fantastic outfits! thank you to parents for sending me photos. See right, Willow in her traditional Halloween costume – as a prawn! And Indy made a fantastic Harry Potter. Well done everyone. Happy Christmas from us all at the Laverton news desk! See you in 2022.



*Jackie Moss*

# Parish News

## RODE ROXY LATEST

In view of the continuing uncertainty over the Covid situation in the UK, and especially the spread in Europe, the Roxys took the decision to cancel the November showing, and those for December and January.

We will be keeping beady eyes on the situation during January, in the hope that we will be able to have shows in February and thereafter.

Watch this space, and best wishes to all for a happy and healthy Christmas and New Year.



*Adam Harris*

---

## RODE POPPY APPEAL

As the new Royal British Legion Poppy Appeal Organiser for Rode I would like to thank everyone for their support in this year's Poppy Appeal.



I have been overwhelmed by the willingness of people to help in collecting for the Royal British Legion and for the amazing amount we have collected. The total raised in the village this year is £2223.00.

Thank you door to door collectors, pub landlords, shop owners and every proud Poppy wearer, you are amazing.

*Jacqui Rottenbury*

---

## REMEMBRANCE SUNDAY PARADE

Thank you to everyone in the village who came out to pay their respects on the Village Green in a socially distanced outside Service and supported the young people of Rode Scout Group and the soldiers of 9 RGT Hulavington.



It is appreciated by all the Leaders of the Group.

*Howard Russell*

Group Scout Leader  
1st Rode Scout Group

# Parish News



# Parish News

## THANK YOU JULIA...

The lovely Julia Robb has been producing our “Parish Gardening” pages for over two and a half years – yes Julia your first article was way back in May 2019! In that time Julia has also done much to encourage community gardening with “Rode Grows and Shares”. The plant centred events she organises are great for so many reasons and have also benefited several community institutions (e.g. the planned new Scout’s hut and the developing of the additional land at RPF) with funds raised at the events being donated to them.

Sadly, the time has come when Julia is having to relinquish her Link role. We are very sad to be losing her and will be forever grateful for the way she, as a relatively new Rode resident, without hesitation took it on. Little did she know how soon the copy deadline looms every month but nothing has stopped her meeting the deadline – including amongst other things her wedding and honeymoon!

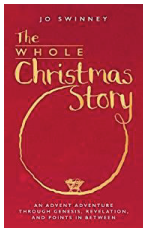
Thank you Julia, for all you have done for The Link - and for the community. We have no doubt you will continue to promote gardening and sharing in H.V. and we look forward to hearing more from you and Rode Grows and Shares.



*Gill Leonard*  
Editor

---

## BOOK REVIEW - THE WHOLE CHRISTMAS STORY



This is an inspiring book by Jo Swinney providing a short bible passage and devotional for each day commencing December 1<sup>st</sup> and continuing to Epiphany (January 6<sup>th</sup>). It could be used for personal study and/or your home group. It brings a whole new perspective to the Christmas Story, starting with the book of Genesis and ending in Revelation. There is a range of bible passages from the familiar to the less familiar, all carefully chosen to illustrate a point.

The book skilfully traces the great biblical metanarrative of creation, the fall, waiting in hope, salvation through Jesus Christ and our new life in Christ, along with the promise of an eternity with God. As we emerge from a time of challenge and crisis in the post-covid era, this is a book, which radiates the hope and light of the gospel, communicating in a contemporary theme.

*Richard Loveless*



# Parish News

## RODE CHRISTMAS TREE

The 2021 Christmas tree (courtesy of Osborne's) on Rode Village Green, was put up just in time to be included in this edition.

A glorious blue sky and sunshine on the day as you can see from the photos below. James advises that it is a traditional Norway spruce and that it would have taken 25-30 years to grow to its height of 25 feet.



The Osborne's will be fully in the swing of selling their Christmas Trees by the time you read this (see page X).

*Gill Leonard*  
Editor

# Parish News

## DOORSTEP CAROLS

Last year we had lots of fun with Doorstep Carols, so plan for it this year with your neighbours and encourage them to join in – if you can't tune in to Radio Somerset or Radio Wiltshire then get onto BBC sounds and try Radio Bristol.



Bring out the mince pies and mulled wine and enjoy singing carols together on December 15th! Contact me for more information or help. 321jorobinson@gmail.com or 831381.



*Rev Jo Robinson*

---

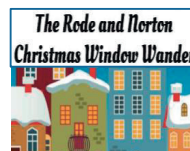
## FRANS DECEMBER FUNDRAISERS

### Rode Santa Dash – 12<sup>th</sup> December:

This year it's going to happen again! After brilliant events in 2018 and 2019 we didn't/couldn't hold the Rode Santa Dash last year. So, 2021 promises to be the best yet!



The 1km family fun run is a flat(ish) single circuit around Rode and is child and buggy friendly (children will need to be accompanied by a grown up running buddy!). The 2km fun run adds a second lap for those of you with a little more energy.



Both runs will begin at 10.30 after a special Santa themed warm up (remember how brilliant this was?). Registration from 09.45 and numbers supplied on the day. All participants will be given a Santa hat but we strongly encourage festive fancy dress, the bigger the better, there will be prizes! Children under 3 can join in for free. Visit: [rodesantadash21.eventbrite.co.uk](https://rodesantadash21.eventbrite.co.uk)

### Rode & Norton Christmas Window Wander 11<sup>th</sup> -23<sup>rd</sup> December:

Come and join us for the second Rode & NSP Christmas Window Wander trail. See the magically illuminated window displays in the build up to the big day.

To take part buy your maps online and we'll email them to you, then guess the songs in each of the windows! They will also be available at Rode Post Office and the Cross Keys. Visit: [windowwander21.eventbrite.co.uk](https://windowwander21.eventbrite.co.uk)

*FRANS Team*



# Parish News

## SCOUTS ANNUAL RODE CHRISTMAS CAROLS

This year Rode Scout Troop are holding their Carol singing on the Village Green. Instead of the usual door to door singing we are inviting you to join us on the Green Monday 13th December 6.30pm to 8pm.



Mince pies, hot chocolate and mulled wine will be available for a small donation. All profits will be going to Julia's House, a children's hospice in Wiltshire.

Come and get in the Christmas spirit, sing some Carols and make a difference to an amazing charity.

*Jacqui Rottenbury*

---

## SANTA'S ANNUAL VISIT TO RODE...

Save the date – Frome Lions and Rotary advise that unless they are affected by more Covid restrictions their annual Santa Float will be visiting Rode on the evening of Monday 20<sup>th</sup> December.

Unlike last year house-to-house collections will return and Santa's helpers will be knocking on individual doors and collecting cash at the roadside. Handwritten letters to Father Christmas will also again be accepted this year, and the post box on the float will be in use - make sure to include your address!



Santa is expected to start his journey at The Bell at approximately 5.45pm. He will then follow the route below:

Church Street, Orange Close Nutts Lane, Marsh Road, Main Road, High street, Fairfield, The Mead, High Street, Lower Street, Walnut Close, Main Road, go to junction BOA road, Towards Trowbridge Road, Towards the Bell, Church Field. **End at the Bell**

The home for all information on the floats progress is @santafrome on Facebook. Mobile phone users can donate by text. To donate text SANTAFROME and either 1,3,5,10 or 20 to 70085. In addition, there is also a Just Giving web page, where donations can be made using: [www.justgiving.com/campaign/santafrome](http://www.justgiving.com/campaign/santafrome).

*Gill Leonard*  
Editor

# Parish News

## WHO KILLED THE (TBA!)...?

– Saturday February 5<sup>th</sup> 2022 at 7.30pm, Rode Memorial Hall. Yes, we are back again in February with another murder mystery play.

This is our follow on from our successful one night only 'Who Killed The Farmer?', staged in February 2020 – just before Lockdown!



You can guarantee that there will be many familiar faces amongst the cast and we do require some audience participation to work out 'Who Killed The .....?'. (The final choice of 'victim' is still to be decided upon!

This is a family event and everyone can join in the fun. Tickets will be available from The Post Office in the New Year and come at the very reasonable price of:

£10 per adult including a glass of wine and cheese and biscuits  
£5 per child including a soft drink and cheese and biscuits

Profits from this year's Murder Mystery play will be going to The Heart Of Rode.

Please come and support us.

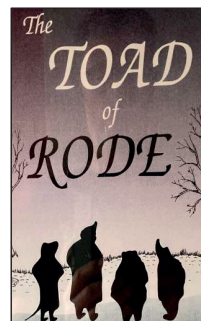
*Sally Pickett*

---

## RODE PANTO UPDATE

Rehearsals at the Pavilion (Thanks Mal), for The Toad of Rode: Returns, are paying dividends and the characters are really taking shape and colour.

As ever the song and nearly dancing sections are proving to be a particular challenge but at least the kids have nailed theirs. It would also be fair to say that Lucia and Anne are going to take the place by storm when they bring their unique interpretation of musical theatre to the Village Hall. I also have great expectations of the Grease Lightning number featuring Richard 'Mr Raves from the Grave' and his two lovely badass sidekicks. A mention also for Messrs. Paul Tarbrooke and Andy Hodder who are trying very hard to hide the fact that they are super keen to nail their Hammer impressions. Sorry boys, you're not fooling me!



## Parish News

The best things about our Panto journey, is to watch new friendships developing and seeing people grow in confidence and turning from reluctant thespians into super over the top performers. I can confirm that Team Toad are having a lot of fun and there are an increasing number of 'luvvies and darlings' appearing in our midst.

Costumes are looking great thanks to the lovely Sue Shannon, and Martin of Maple Audio in Laverton has stepped in to supply all our audio tech needs free of charge which is a huge plus. Then there is Katy Heath from the Keys who is busy painting the set-boards that Gary Bull has sourced for us, so all in all the Village is buzzing with Panto Magic!

Show time is scheduled for Thursday March 3rd, Friday March 4th and Saturday March 5th next year, and we will obviously be making sure that this is a COVID safe event. Fingers crossed for low winter infection rates.

I have included a couple of pictures of Mike Salmon in character as the evil badger. One was taken after a Parish Council meeting, the other one is a Photoshop job as we couldn't find one where he looked calm and relaxed.



With a bit of luck, we will be selling tickets in January both through the Village Shop and the ever wonderful Cross Keys are also helping out thanks to Hannah who has plans to drag us into the internet age.

There are plans for a raffle and a programme, so if you would like to donate a prize, place an advert, or become a sponsor, please contact gary personally via face book, or through the Toad of Rode>Returns face book page and we will follow up with you. If you prefer more traditional forms of communication, pop a note through my (Gary Holloway) door at No7 Church Lane, or at the Post Office marked for my attention.

As ever, there will be no tickets on sale at the door, so snap them up when they are released to avoid disappointment.

Right, time to get back to deciphering rehearsal availability into some kind of schedule, honestly herding cats would be easier than this.

*Gary Holloway*

# Parish Health & Wellbeing



As doctors we recognise the need to be lifelong learners and I recently joined a fascinating online presentation by the hand surgeon Mr Donald Sammut on 'The language of the hand' when he described not just its medical function but its significance in communication. When a man with no hands was asked what he missed most, he replied 'the handshake'. A handshake can be a warm greeting; the holding of someone's hand a potent sign of empathy.

Though I recognise we differ in how tactile we like to be, the value of the handshake and the hug have been underlined to many of us by their absence, denied to us by the current pandemic. I miss the presence of the appropriate handshake or holding of the hand when seeing patients.

In a recent publication the NHS Confederation stated, "The NHS as a whole is under a pressure never before witnessed by this generation of clinicians". With immense pressure on ambulance services, A&E, hospitals and GP surgeries I am acutely aware that this is not an easy time to be a patient, too.

Christmas is fast approaching and for your reassurance, the practice will as always be open on every weekday apart from the Bank Holidays themselves, with appointments focussed on 'on the day care' for acute medical needs. Please order repeat prescriptions well ahead. Patients eligible for a Flu vaccine may contact the surgery to book an appointment. Please note Covid vaccinations are arranged by Shape Mendip. Whatever your circumstances this Christmas, may you find some hope, joy and peace.

*Dr John Beaven*



**Just think 111 online first**

When you think you need A&E, go to [111.NHS.UK](https://111.nhs.uk)



# Parish Health & Wellbeing



As the cold weather and dark nights roll in, winter can have a bad effect on your health and wellbeing. The NHS is facing unprecedented challenges this winter. We'd like to ask people for their continuing support in accessing NHS services wisely, as the COVID-19 pandemic continues and as we enter autumn and winter. The NHS needs the public to play its part.

As the cold weather and dark nights roll in, winter can have a bad effect on your health and wellbeing. We have launched our Stay Well Somerset This Winter campaign. Winter can be a tough time of year for many of us. Due to the extra challenges we face with COVID-19 this year, it is essential we pay close attention to our own wellbeing and the wellbeing of those around us.

Health and care services across Somerset are here to support you to stay well this winter. Our new online resources include pages that provide tips and information on how people in Somerset can stay well this winter, including dedicated pages focusing on parents. To find out more visit: [somersetccg.nhs.uk/stay-well-this-winter/](https://somersetccg.nhs.uk/stay-well-this-winter/)

## 10 tips to help you stay well this winter:

- Know where to go if you need help and support and choose the right healthcare service for your needs
- Look after your mental health
- Get your flu jab
- Get your COVID-19 vaccination or COVID-19 booster if you're eligible
- Stay active
- Eat well
- Keep your home warm
- Beware of slips, trips and falls
- Stay safe and follow the latest COVID-19 guidance
- Look out for your friends, family and neighbours

# Parish Youth News & Events

## CHILDREN'S WORKER NEWS

Dear families please can I thank you for all your prayers and get well wishes over the past four weeks following a fall whilst visiting my family in Scotland at half term. I am now back home and resting as I have a fractured tibia and torn ligaments. I must also say thank you for a lovely bouquet of roses and lilies that was delivered to my home from the parish.

### TOTS and TOYS:



We now have 25 families registered for Tots and Toys. As some of the families drop off older siblings at NSP pre-school and school or have older siblings catching the minibus to Rode we have added an extra half hour to the session as some families were waiting outside until Tots and Toys opened and getting cold.

Our new time is 9am-11am Wednesdays at NSP church. No booking is needed please arrive when you are able as we also have several families with very young babies.

The cost is £2.00 per adult for coffee and cake, and we ask you to bring your own refreshments for your babies and toddlers.

### POSADA:

The Rode and Norton St. Philip Posada's will begin their journeys on 1<sup>st</sup> December and will finish their journeys at the Christmas Eve Crib Services.



### RODE CRIB SERVICE AND NORTON ST. PHILIP CRIB SERVICE:



These will take place on Christmas Eve at 3pm at Rode Chapel (next door to Rode Post Office) and is a lovely short family service to start your Christmas celebrations. The children may come dressed as a character from the Nativity story for either Service.

If you cannot come to Rode then we have the same Family Service just a little later at 5pm at NSP Church.



# Parish Youth News & Events

## DECEMBER MINI BREAKFAST CHURCH:

This will take place on Zoom 9.00am-9.30am on Sunday 19<sup>th</sup> December and our theme will be 'The Christmas Visitors'.

Please let me know if your children will be attending so I can send you the zoom link and an activity pack.

## JANUARY MINI BREAKFAST CHURCH:

This will take place in NSP church 9.00am-9.30am on Sunday 16<sup>th</sup> January and our theme will be 'Christingle'.



Again, please let me know if your children will be attending so that I have enough Christingle resources.

Wishing you all a happy and blessed Christmas.

*Sue Rodford*

H.V. Children and Family Worker

E: kidschurch@hardingtonvale.org.uk T: 01373 812766

---

## SCOUTS

We have had a fantastic time over the last month at Scouts.

Fireworks on our 1st meeting back after half term, thanks to everyone who bought some and to the Explorers who set them off. The following meeting we had a campfire where we invested 13 Scouts, our largest group invested in a single evening, followed by traditional campsite songs.

A team of Scouts went off to Huish Woods near Taunton for a day where they competed in the District County challenges. A great event full of games and team building activities.

Remembrance Sunday was a huge success and all our Scouts looked very smart as they took part in the parade.

We are looking forward to more fun over the next month as we move towards Christmas with ice skating, carol singing and Christmas crafts on the agenda.



*Jacqui Rottenbury*

# Parish Youth News & Events

## NORTON ST PHILIP PRE-SCHOOL

This term we have been exploring the changing seasons and the weather. The children have made rain catchers and baked cupcakes which they then decorated with different sorts of weather on top. We have also harvested the last of our carrots from our garden. Roles have been cast for our Christmas Nativity which we very much hope to be able to perform to parents and carers in person this year.



Thanks to the generosity of the team at Steve Vick International, the Pre-school building is sporting some new rather splendid personalised bunting and the children are making good use of the outdoor cushions that have also been made for us. Thank you to all at Steve Vick International very much for your efforts to create these items for Pre-school.

The office at Pre-school has been reorganised recently enabling us to make better use of the space. We have been fortunate to have been given two pre-loved desks from our friends up the road at Tractor Ted. Thank you to Farmer Tom himself and his assistant, Tom Bird for delivering and installing them for us.

The staff at the Co-op in Norton St Philip have been hard at work fundraising for our Pre-school and have raised that fantastic sum of £221.00! Thank you so much for your continued support.

Did you know that although we only take children from two years old, you can put your child's name down for Pre-school at any age. As the Pre-school is usually oversubscribed, registering early is the best way to maximise the chance of your child being offered a place when they are ready to start. For more information or to register your child, please email [info@nortonpreschool.co.uk](mailto:info@nortonpreschool.co.uk) or check out our website [www.nortonpreschool.co.uk](http://www.nortonpreschool.co.uk)

Merry Christmas and a Happy New Year

*from everyone at Norton St Philip Pre-school*

## A LOW-WASTE FAMILY CHRISTMAS



Christmas or Wastefest? You choose. Here are easy ways to avoid a mess of excess and create a simpler celebration focused on family and the future:

- Clear now. Avoid the Christmas trashjam and what it can cause: missed collections. Get tidy today with recycle boxes and your local recycle site to be ready early for internet delivery waste and not get caught out "panic wasting".
- Be a better giver. Insist on wish lists, invest in real quality that lasts, look forward by giving digital subscriptions/experience vouchers, buy local to help your community (with less plastic and cardboard packaging), use real paper wrapping - not the metallic or plastic - that can actually be recycled.
- Eat early, feast well. Make sure you buy what you need and so eat all you buy. Have a holidays meal plan, check your stocks before shopping with a list, eat into the freezer/fridge first to make space, use up all those lovely leftovers.
- DIY those decorations. And use anything but plastic. Winter foliage and decorations of paper and card - especially home-made - look great, and for the tree, make baubles that recycle anything from buttons to old family photos. For your front door wreath, go home made with branches, evergreen leaves, dried fruit, and all manner of odds and ends.



Fake fir or a real tree? Tradition and - unless using the fake for many years - your carbon footprint says go real for that Christmas centrepiece. Aside from using it in your wildlife corner or chipping it to add to your compost bin, your tree can be dropped off at any recycle site. Garden waste subscribers can leave their tree - up to six feet with decorations removed - out for their first collection in 2022. Combining vital causes and recycling in one helpful offer, see the details below about the real Christmas tree charity collections that you can book right now. For a donation Dorothy House Hospice Care will collect trees search for "Christmas tree" at [dorothyhouse.org.uk](http://dorothyhouse.org.uk) for details.

The festive fortnight always means changes to collections – see back cover. Note the annual suspension of garden waste pick-ups. Recycle sites close Christmas Day, Boxing Day and New Year's Day.

PS: Want your Christmas and New Year recycling and rubbish taken? Please "park smart" so your collection crews and their trucks can get through.

- Use only the official boxes, bins and bags and take any extra rubbish or excess recycling, especially cardboard, to any recycle site.

# Parish Ecology

## RODE WATER ISSUES UPDATE

### **Rode Water Recycling Centre and Storm Overflows:**

The £2.6 million upgrade of Rode Water Recycling Centre is on track, with the first phase of construction now complete barring a few small tasks that will be done before Christmas.

Bristol Water will be making a connection to a new drinking water service pipe to the site during December. Wessex Water has already installed new services for Langham House and Heathfield.

Repairs will be made to the site's shared access track early in the new year, and in March Wessex Water will start commissioning for ferric (salt) dosing phosphorus removal equipment. Phosphates can cause excessive plant growth in rivers, and the sewage treatment upgrades at Rode will remove around 300kg per year, which is more than half the current level.

A second phase of work to increase biological treatment capacity is scheduled for the end of 2022 and is likely to take around two months to construct. All work will again be within the existing site boundaries.

### **Wessex Water Statement Regarding Storm Overflows:**

“There has been a lot of political and media attention on storm overflows, which operate during heavy or prolonged rainfall to prevent sewage backing up into streets and homes. Wessex Water supports the recent government strategy to eliminate harm from overflows and reduce their use.

Contrary to some of the headlines, raw sewage is not “pumped into rivers”. Storm overflows act as relief valves, allowing excess storm water to be released into rivers or the sea. As any sewage included is screened and heavily diluted by storm water, there is little impact on the environment and it's rare for this to cause pollution.

Storm overflows have always been part of the sewerage network in the UK because the majority of sewers carry both rainwater and foul sewage. We are now getting more intense rainfall storms due to climate change, which means the frequency of overflow operations will increase.

There are only two possible approaches to eliminating overflows: (i) separation to stop storm water entering the combined sewer, or (ii) constructing large storage tanks which would have significant carbon consequences, cost billions and would be hugely disruptive.

## Parish Ecology

We need the government to change legislation so developers can't connect surface water to combined sewers, which is making the matter worse. There is also the need for water companies to be able to release rainwater only directly into a watercourse.

And Ofwat, the economic regulator, needs to prioritise investment, which it tightly controls to keep bills down, so water companies can get on and help solve the problem.”

### **Being Aware of Water Quality – and How We Can Help:**

As far as local river water quality is concerned, the upgrades to the Water Recycling Centre should make a positive impact on the quality of the water in the River Frome. Wessex Water tests water quality at Tellisford and is planning to make this data available in real time at some stage (incidentally, up-to-date information about the water quality at Warleigh Weir is already available: <https://www.wessexwater.co.uk/warleigh-weir/>).

If we are visiting the coast and want to check the quality of the sea water, one helpful resource is the Safer Seas app – this provides real time information about water quality and beach safety, and alerts you to water quality issues linked to sewage releases by waste water companies <https://www.sas.org.uk/safer-seas-service/>

There are, of course, other factors which impact water quality – in particular, agricultural run-off, but also smaller issues such as dog poop (if not picked up, it probably ends up in the river, or the Water Recycling Centre), and wet wipes. The latter are not “flushable” (despite what the manufacturers say) and aren't broken down within the Water Recycling facility – hence, when there is a discharge we end up with used wet wipes in the river.

We can individually help to reduce the volume of water that reaches the Recycling Centre (and hence the number of discharges) by installing water butts to collect rainfall from roofs. We can also reduce the impact of water run-off by installing a soakaway (and, if this is feasible, you may be eligible for a reduction in your waste water bill <https://www.wessexwater.co.uk/help-and-advice/your-wastewater/surface-water-drainage>)

And finally – the new Environment Act provides some increased protection, but it lacks targets and regulatory “teeth”....hence we need to keep up the pressure on all those responsible for water quality – including our elected representatives, and the bodies with responsibility for enforcing the Act.

*Jim McAuliffe*



## Parish History



We have another of the “Those Were The Days” articles below, it was originally published in the Link in December 1975 and details some memories of Christmas in Rode earlier in that century...

“To children in Rode at the beginning of the century, the day when the festive decorations and presents appeared in Mrs. Stokes’ shop window (this is now Mrs. Hughes’) was the first sign of Christmas. The main feature of the display was always a much loved giant doll, dressed each year in pretty clothes made by Mrs. Stokes’ daughters.

That was also the cue for intensifying rehearsals of the popular Black and White Minstrel type show that Mr. Frank Woolley put on at Christmastide in the Concert Hall/Reading Room (Now the Brewery Canteen), and for the Carol Singers young and old to launch forth in the evenings, accompanied through the streets by Mr. Woolley on a very heavy harmonium, and also visiting the various big houses.

The village pubs were particularly active and gay with frequent entertainments given by a very talented family of hand-bellringers called Morgan who lived in Church Lane. The Cross Keys also ran a Christmas Club in which a large section of the village participated.

Not all the pubs were as they are now, - the Red Lion was a butcher’s shop in those days, owned by Mr. Tom Noad and as his contributions to the street decorations, he would hang anything up to a dozen large carcasses along the outside frontage of his shop!

Contributed by Miss Woolley and Mr. Reg. Fussell”

**Editor’s Note:** After much thought and discussion I have decided to include this article in its original form – times have changed and much is now not acceptable both in daily life and in print but I feel that in the interest of historical accuracy the references to the Black and White Minstrel Show should remain. I apologise in advance if this offends any of our readers.

---

Our thanks again to our “Rode History Man”, Peter Harris, without whom we would not be able to have these snapshots in to our parish history. Peter is a published author on Rode – his books are available at Rode Post Office and General Store. If you come across any old parish magazines in your attic or wish to involve him in researching something involving local history do contact him. His email address is: [pjh14cl@gmail.com](mailto:pjh14cl@gmail.com).

# Parish Groups

## CHRISTMAS MONDAY LUNCH CLUB

We're delighted to confirm our Christmas Lunch Club will take place on 6th December at Rode Memorial Hall at 12.15pm. We hope it will be a great celebration for all our members finally getting together and enjoying the start of the season of goodwill!!



So - our Christmas Lunch is quite an event - a fantastic meal that we are delighted to provide for £5 per head to include welcome drinks, a 2 course meal with all the trimmings and a great raffle with fab prizes! You're welcome to bring your own wine/drink of choice as we are licensed!

Due to Covid a few things to note please:

- I will phone our regulars to confirm their places. If you have not been before you will be most welcome but you MUST let me know well in advance you wish to come (the night before is too late!)
- Please bring and wear a mask until you are seated.
- Please bring cash - we have no facility to take cheque or card payments.
- All our team will have taken a Lateral Flow Test the day before to ensure we are Covid free - for everyone's peace of mind. ....we would politely encourage you to do the same if possible.

So - very much looking forward to seeing you all for some festive cheer!!



*Alex Sing and the Lunch Club Team*

T: 01373 830836 M: 07828600095 E: [asing\\_homeandgardens@hotmail.com](mailto:asing_homeandgardens@hotmail.com)

---

## LOVE TO DANCE!

Hello you lovely people! I'm sorry to have to inform you that the Line Dance class in the Rode Memorial Hall is now cancelled due to lack of support.



A huge THANK YOU to the ladies who did come, and I hope to see you at the Monday evening class in Faulkland instead! We laugh a lot in this class - the presence of a fun couple from Laverton helps a lot! We also get a lot of dancing and socialising done, so a merry time is had by all. Bless you - it was lovely to meet you, however briefly!

*Patti Moys*

E: [pattimoys@gmail.com](mailto:pattimoys@gmail.com).

# Parish Groups

## RODE MONTHLY WALKING GROUP

November's walk took us along an extremely muddy river path from Bradford on Avon to Avoncliff so instead of returning along the canal path as planned it was suggested, and agreed unanimously, to cross the river and railway line at the viaduct and follow the road back to BoA. Apart from being a clean and dry walk this also took advantage of the glorious autumn morning sunshine which was lacking on the shaded side of the river.

Next month, being the beginning of the festive season, we are breaking with tradition and not setting off until 11 am from the village green on Thursday 2 December. This will enable us to walk the Tellisford loop and return in time for a social lunch. Weather and mud permitting! Please contact me for further details.



Please note that from January there will be a change in the day for these monthly walks which will now take place on the 2nd TUESDAY of each month, starting on Tuesday 11 January 2022. Meet at the village green at the usual time of 10 am for a local walk; route to be confirmed later as this will depend on the current state of public footpaths.

*Liz Dinnis*

E: elizabethdinnis49@gmail.com T:07788 656337

---

## RODE OVER 60'S

Sadly, once again the Committee have decided to cancel the Christmas Tea Meeting on 3rd December in the Hall, due to high levels of the Covid infections locally. There was no meeting planned for January, so the next meeting will hopefully be on 11th February 2022 in the Hall, please keep your fingers crossed!

In the meantime we would like to wish Graham Noad a Very Happy Birthday on 6th December, Peter Harris on 10th January, Ros Dymond on 14th January, Pat Smith on 24th January and Angela Harper on 25th January, all have a Very Happy Birthday, enjoy your Special Day.

And finally, the Over 60's Committee wish you all a Very Happy and Peaceful Christmas and Very Best Wishes for a Healthy 2022. Keep well and stay safe.

*Sue Beaven*

# Parish Groups

## RODE AND DISTRICT GARDENING CLUB

We decided to go ahead with the scheduled meeting in November, our speaker Martin Young from Nectar Plants in Weymouth having agreed to attend. The topic for the evening was 'Dry Gardens', featuring drought-tolerant plants.



There are many hardy perennials and shrubs which will cope with dry conditions, whether that be at the coast, in chalky downland , or in rockeries.

Obviously many Mediterranean plants thrive in dry areas, e.g Lavender, Marjoram, thyme and deep-rooted purple fennel. Plants which have succulent, grey or hairy leaves (eg Sedum spectabile, Lychnis coronaria) retain moisture enabling them to thrive in drought conditions. Also narrow, tough-leaved plants such as Rosemary, and some low-growing plants ,such as Aubretia, Armeria maritime(Thrift) which do well in rockeries alongside small shrubs such as cistus and potentilla.

While many popular perennials and shrubs, including Rudbeckia, Papaver, Perovskia , Pelargoniums, Escallonia, Buddleja,Hypericum and Eleagnus and many others, (more than 75 named plants available in a list on request!) will cope in hot dry conditions no plant will survive without moisture and some will perform better if watered in very dry periods.

Plants in pots are particularly vulnerable in dry conditions and should be given a good soak once a week in summer. Martin also emphasized the importance of conserving rainwater in as many receptacles as possible. His talk was accompanied by some excellent slides.

Plants and books were available to purchase and although there were only 13 attendees quite a number were sold. Martin also kindly donated a book as an additional raffle prize.

We have reluctantly decided to cancel our proposed Christmas social evening in December due to the continuing Coronavirus situation but we do hope to be able to re-convene in the New Year .

We propose holding a meeting on Monday, 10<sup>th</sup> January 2022. A speaker has yet to be engaged but details will be announced as soon as they become available. We hope to be able to produce some sort of programme for future meetings but please bear with us in these uncertain times.

*Helen Curwen*

# Parish Groups

## RODE LADIES GROUP

Sadly, Covid infection rates in this area remain stubbornly above the national average, and it has been decided to suspend meetings until the New Year. We hope this will help to protect members over the Christmas period and enable families to celebrate without the worry of restrictions becoming necessary.

We would like to wish you all the compliments of the season, and best wishes for a happy and healthy Christmas.

*Pam George*

---

## ALL TOGETHER NOW!

All Together Now! is a group of people from varied backgrounds who meet weekly to sing and enjoy each other's company in a relaxed and informal environment. If you think you might enjoy being All Together Now!, you are welcome to come along for a free Taster Session where you can meet us, experience what we do, and join us in song. There is no audition, no need to read music, nor any need to feel you are a strong singer; and you won't have to sing on your own. All you need is enthusiasm and a love of singing. So don't worry if you're thinking "What would you do if I sang out of tune, would you stand up and walk out on me?" We wouldn't!

We look forward to welcoming new members from Rode and the surrounding villages. However, our group includes several people who are more vulnerable than most to infection, so we reluctantly ask that you come along only if and when you are fully vaccinated against Covid.

We are a not for profit group, but after your free Taster Session there will be a small monthly charge to cover our overheads such as printing and stationery costs. So that we can make sure we have enough song sheets available - or if you have any queries - please get in touch with Erik or Gill before you join us for the first time.

Singing for fun at Rode Memorial Hall, Thursdays 1:15 - 3:15pm

Come along and experience the joy that comes from singing with others. Ready?  
ALL TOGETHER NOW!

*Erik Dorman*

T: 830650 E: erik.dorman@gmail.com

*Gill Poa*

T: 830995 E: gillpoa@hotmail.co.uk



# Parish Events

REMEMBER TO CHECK OUT OUR DIARY/YEAR PLANNER ON THE BACK COVER FOR MORE PARISH EVENTS. ALL ARE CROSS REFERENCED TO PAGE NUMBERS IN THIS ISSUE FOR FURTHER DETAILS ON THE EVENT.



**Lunch  
Club**

Christmas Lunch  
6th December @ 12.15pm  
See page 31

EVERY Wednesday 9 - 11.00am

St Philip and St James Church, NSP

£2.00 per adult for coffee and cake, and we ask you to bring your own refreshments for your babies and toddlers.



## *The Rode and Norton Christmas Window Wander*

*December 11th-23rd*

*A festive trail of  
window displays  
around Rode &  
Norton St Philip*

*Trail maps  
£5*

*Maps available  
from Rode PO &  
The Cross Keys*

*Prizes  
to be  
won!*

*Book online and receive your trail map digitally:  
[windowwander21.eventbrite.co.uk](http://windowwander21.eventbrite.co.uk)*



## Parish Events

Hardington Vale invite you to join our  
**Outdoor Nativity**  
**Sunday 12th December at 3pm**  
*meet at - top of Marsh Road, Rode*

- Hear and see the Christmas story
- Join in the Carol Singing
- Live cast, including a donkey



Mince Pies  
and  
Mulled Wine  
Afterwards

**Rode**  
**Santa Dash**

FANCY DRESS STRONGLY ENCOURAGED! SANTA HATS PROVIDED

**December 12th 2021**  
**10.30am**

**Start/Finish - Rode First School**  
**1km Family Fun Run • 2km Fun Run**

**Adults £8, Children (3+) £5**  
**Family (2&2) £20**

[rodesantadash21.eventbrite.co.uk](http://rodesantadash21.eventbrite.co.uk)



 In aid of the Friends of Rode and Norton Schools

Sponsored by 

**Forget Me Not**  
**Café**



We enjoy refreshments, conversations and entertainment in a relaxing, welcoming atmosphere.

A supportive environment for individuals, families and carers living with memory challenges.

Venue  
Norton St Philip Parish Church


Dates and Times  
Dec 13<sup>th</sup> at 2.30-4pm – Festive afternoon!  
In 2022 – the second Monday of every month 11am- 12:30pm

We look forward to seeing you

The Café team have all undergone dementia friendly training

# Parish Events

*The Meaning of Christmas*  
*An immersive experience*  
*of the Christmas Story*  
*using Yoga and Meditation*



WHERE: Church of St Philip & St James NSP  
 WHEN: 15<sup>th</sup> December 6-7pm  
 WHO: All interested adults  
 (basic level of fitness/flexibility)

Wear comfy/gym clothing and bring a mat  
 Contact: [carolinewalker@btinternet.com](mailto:carolinewalker@btinternet.com)

 **Carols on the green** 

Monday 13<sup>th</sup> of  
 December  
 6:30 – 8:30



Join Rode Scout Troop on the Village  
 Green as we raise money for Julia's  
 House – Children's Hospice with  
 Christmas carols, mince pies and mulled  
 wine



**You're invited!**  
 Wednesday 15<sup>th</sup> December, 6pm



**DOWNLOAD**  
 Visit the website [doorstepcarols.co.uk](http://doorstepcarols.co.uk) and  
 download the words.

**TUNE IN**  
 The carols will be broadcast on your local  
 BBC Radio station to help us all stay in time  
 and in tune or via BBC Sounds.

**SING!**  
 Simply sing or play along on the night.  
 Help us spread the word with your neighbours!

Raising money for local charities  
[doorstepcarols.co.uk](http://doorstepcarols.co.uk)

**FARLEIGH HUNGERFORD  
 CAROL SERVICE**



The annual Carol Service organised  
 by Farleigh Hungerford Chapel  
 Trust will this year be held in St.  
 Leonard's Church, Farleigh  
 Hungerford.

Saturday 18<sup>th</sup> December  
 Starting at 6.00pm.

Mulled Wine and Mince Pies served  
 in the School Room opposite the  
 Church at 5.30pm.  
 All welcome.

**St Mary's Church  
 Laverton  
 Sunday 19<sup>th</sup> December  
 at 11am**

*Christmas  
 Carol Service*

## Parish Events



### FAMILY CAROL SERVICE

St Lawrence Church  
19th December at 3 pm

**Santa Visiting Rode**  
From 5.45pm  
on 20<sup>th</sup> December

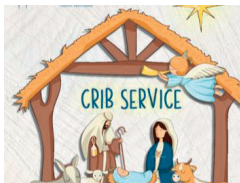


### Christingle Service



All Saints' Church, Tellisford  
Thursday 23<sup>rd</sup> December  
at 5 pm

*Crib Service*  
5pm on  
Christmas Eve  
Rode Chapel



# BINGO

## Bangers & Mash Evening

Saturday 29th January 2022

Rode Memorial Hall

Doors open - 6:45pm, Eyes down - 7:15pm

### Menu

*Local Bangers & Mash (vegetarian option available),  
caramelised onion gravy and peas.*

*Followed by a selection of desserts.*

*Licensed Bar*



**Entrance Ticket price Adults £8.00**

**Children/Smaller portion £4.00**



**Tickets available from the Post Office**



# Parish Events

## RODE PLAYING FIELD PLANTATHON



Come and join us on

Thursday 30th December 10.00am

At the Pavilion

To plant a new native hedge at Rode Playing Field  
as part of the Community Orchard and Wildlife  
Project

All ages welcome, refreshments provided  
Bring your spade!

## Who Killed the (TBA!)... ?

A return of the murder mystery evening:

Saturday 5<sup>th</sup> February 2022 at 7.30pm

in the Memorial Hall

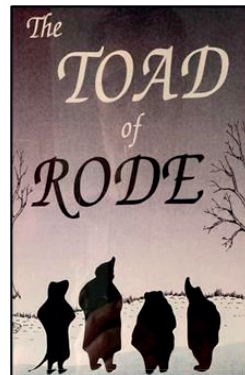


Tickets available from the Post Office:

£10 per adult including a glass of wine and cheese and biscuits

£5 per child including a soft drink and cheese and biscuits

Profits to The Heart of Rode



RODE  
PANTOMINE

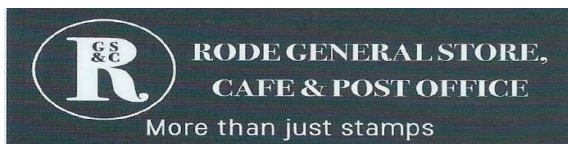
FULL DETAILS  
TO BE  
CONFIRMED

SEE PAGE 20  
FOR MORE  
INFO

REMEMBER TO CHECK OUT OUR DIARY/YEAR PLANNER ON THE BACK COVER FOR MORE PARISH EVENTS. ALL ARE CROSS REFERENCED TO PAGE NUMBERS IN THIS ISSUE FOR FURTHER DETAILS ON THE EVENT.



# Parish Food & Drink



## Normal Opening Hours

Monday	9am – 5.30pm
Tuesday	9am – 5.30pm
Wednesday	9am – 1pm
Thursday	9am – 5.30pm
Friday	9am – 5.30pm
Saturday	9am – 1pm
Sunday	Closed

## Christmas Ordering

A selection of delicious, locally sourced products are available to order.

Last date for ordering, Friday 14<sup>th</sup> December. £10 deposit required.

Orders will be ready for collection before noon on Christmas Eve.

I have now managed to source turkeys from Woolley Park Farm in Bradford on Avon... Order forms for these, along with other goodies – bread, dairy products, pastries, fruit, veg and more, are available in the shop.

## Christmas Opening Hours Will Be As Follows:



Christmas Eve	24 December	9am - 1pm
Christmas Day	25 December	Closed
Boxing Day	26 December	Closed
Bank Holiday	Monday 27 December	closed
Bank Holiday	Tuesday 28 December	closed
	Wednesday 29 December	9am - 1pm
	Thursday 30th December	9am - 5.30pm
	New Year's Eve	Friday 31st December 9am - 1pm
	New Year's Day	Saturday 1st January closed
	Monday 3 January	normal hours 9am-5.30pm

**32a High Street, Rode BA11 6PA**  
**Telephone 01373 830321**

# Parish Food & Drink



ENJOY A LITTLE FUSSELS THIS  
**CHRISTMAS**  
*Hampers & Foodie Gifts*  
AVAILABLE NOW!

Shop instore at Church Farm, Rode BA11 6AA  
Monday - Friday 9am - 5pm | Saturday 10am to 1pm

See all our Gift Boxes, Hampers and the full Fussels range at  
[www.fussels.co.uk](http://www.fussels.co.uk)



## THE MILL AT RODE

We have some really exciting things coming up over the next few months!

We are completely booked up for Christmas Day, but you can still join us for Boxing Day, you can find our menu on our Facebook and Instagram pages.

We are hosting a New Year's Eve event - more details will be coming in a few weeks; we will have a band and an option for a 4-course dinner!

We will also be having an event for Burns Night in January.

The Mill have so many other wonderful things in the planning so keep your eyes peeled on our socials for updates!

Merry Christmas Everyone, and all of us here at The Mill hope the New Year brings you happiness and joy!

To book a table please call 01373831100 now.

@rodemillofficial

<http://www.rodemill.co.uk>



# Parish Food & Drink

## Somerset Foodie

ingredients to inspire

### Your local online specialist food retailer

Shop online, we're local and offer FREE same day delivery, straight to your doorstep.

Transform the meals you create at home with our artisan ingredients, you'll find simple and inspiring recipes with 'how to make' videos on our website.

## ♥ somersetfoodie.com



Deliveries are made on our 100% electric van

Our own packed wholefood ingredients  
are 100% Plastic free

Over 100 Five Star Product Reviews,  
in the last 6 months



Somerset Foodie Ltd, Church Farm, Rode, BA11 6AA t. 07834 852 561



## blindmans



## brewery



Fresh Craft Ales, Casks, Mini Kegs, Bottles, Cans, Bag in Box  
Local & UK Delivery for all occasions

DISCOUNTS AVAILABLE FREE LOCAL DELIVERY OPTIONS

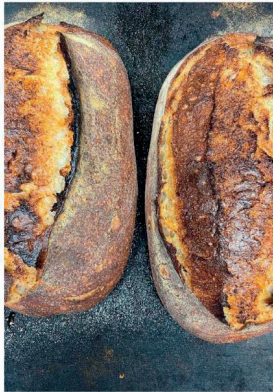
[www.blindmansbrewery.co.uk](http://www.blindmansbrewery.co.uk) 01749 880038

Blindmans Brewery, Talbot Farm, Leighton, Frome





## Parish Food & Drink

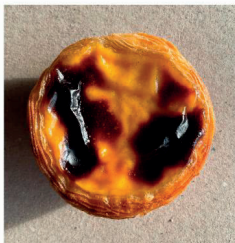


**WE CAN DELIVER TO YOUR BUSINESS OR EVENT**

**JUST GET IN TOUCH:**

**07486 059985 / [www.thevillagebakingco.co.uk](http://www.thevillagebakingco.co.uk)**

**Church Farm, Parkgate Ln, Rode, BA11 6AA**



**AVAILABLE WEEKLY FROM:**

**Rode General Store & Cafe, Mes Amis, The Cross Keys,  
Somerset Foodie, Wild Herb, Farleigh Farm Shop, Frama,  
8 Stony Street & TEALS**

# Parish Food & Drink

## CHATLEY FARM BROWNIES

NEAR BATH

[www.chatleyfarmbrownies.co.uk](http://www.chatleyfarmbrownies.co.uk)



Lovingly handmade on the farm  
9 Delicious flavours  
Delivered by Royal Mail

FREE Gift Wrapping & Gift card  
Gluten free options  
Local Collection from Norton St Philip

## OUR MULTI BUY OFFERS

**£8.50**

For 1 pack

**£8.00**

each for 2 or 3  
packs

**£7.50**

each for 4 or  
more packs

Follow us on facebook! [www.facebook.com/ChatleyFarmBath](http://www.facebook.com/ChatleyFarmBath)



## Parish Food & Drink

### Cafe & Shop both now open!

We are so happy that our  
cafe is now open.



Tables available outside and in our  
extension. Full table service.  
No booking necessary.  
Open inside from 17 May.



Breakfast 9.00 – 11.30  
Lunch 12.00 – 3.30  
Afternoon Tea until 4.00

*We are still offering our delivery and  
collection services from the shop for  
those not feeling comfortable visiting us.*



**Farleigh Road**  
FARM SHOP & CAFÉ

Phone 01225 720006  
[www.farleighroadfarmshop.co.uk](http://www.farleighroadfarmshop.co.uk)



# Parish Food & Drink

## PARISH RECIPE

“**ALL-IN-ONE-POT**” - **LEFTOVER TURKEY CURRY** - This potentially sounds a little unappealing but believe me it's super-tasty. This recipe is a brilliant way to use up your leftover turkey, sprouts, parsnips, roast potatoes... whatever's lurking in your fridge after a Christmas day roast, the whole lot goes into the pot!

Ingredients - Serves 4-6

120g Karimix Tandoori Curry Paste - available from Somerset Foodie

2 x White Onions, finely chopped

2 x Cans of Chopped Tomatoes

Leftover Turkey, chopped into bite sized pieces

Leftover vegetables, anything goes! Cut it into chunks

400ml Chicken or vegetable stock or leftover gravy

A little Fussel's rapeseed oil for frying

Essentially, all you need to do here is make your curry base using the onions, tomatoes and a little stock or gravy, then you throw everything else in. So start by frying your onions in a little oil for about 5 minutes.

Once the onions have started to go a little golden on the edges, add in the curry paste and continue cooking for another 4 or 5 minutes.

Add in the cans of chopped tomatoes and stock or gravy and simmer for about 20 minutes. If your sauce starts getting a little dry, add in some more stock. After twenty minutes, add in all your leftover turkey and vegetables, gentle mix and simmer for another 5 minutes.

All done. Serve with some good quality basmati rice and chutney!

*Ben Tollworthy*

Somerset Foodie (see page 42)

---

Do you have a favourite recipe that you'd like to share with our readers?

If you do, please send it in... you'll receive a bottle of Fussels' Rape Seed Oil courtesy of Fussels' Fine Foods for your trouble!

If you have a photograph of the finished dish, please do forward a copy of that too.

Email: [gillhleonard@aol.com](mailto:gillhleonard@aol.com)



# Noticeboard

## OSBORNE'S CHRISTMAS TREES

Hillview Farm, Marsh Road, Rode BA11 6PE

**OPEN DAILY FROM SATURDAY 27th November**  
**9am - 5.30pm**

Whilst Covid is very much happening, here at Osbornes we will still be providing our usual quality products and service:

**Traditional Norway spruce, Nordman & Frazer fir.**

**Potted trees**

**Large trees up to 15ft**

**A variety of stands**

**Holly & Mistletoe**

**Wreaths**

**Loads and bags of logs and Kindling**



*Don't Forget your FREE Reindeer dust!!*

Any latest updates and news will be listed via our facebook page and our website

[www.o-christmas.co.uk](http://www.o-christmas.co.uk)

01373 830571

07494 015440

**CHEESE & GRAIN**  
FROME

**9AM - 2PM**  
**FREE ENTRY**

**CHRISTMAS**  
**GIFT MARKET**

**SAT 4TH & SAT 18TH**  
**DECEMBER**

For stalls please contact [olivia.dimery@cheeseandgrain](mailto:olivia.dimery@cheeseandgrain)  
[www.cheeseandgrain.com/](http://www.cheeseandgrain.com/) 01373 455420

**SEASONAL**  
**BOUTIQUE BAZAAR**

**Saturday 4th December 10am - 3pm**  
**TO BE OPENED BY FROME'S DEPUTY MAYOR**

**JAMS & PRODUCE**

**BRIC A BRAC**

**CRAFT ITEMS**

**RAFFLE**  
to be drawn on 23rd December

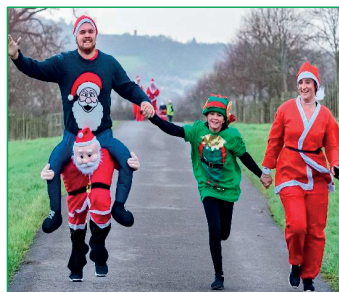
**TEA AND CAKE**

**AT**  
**PHOENIX HOUSE & COURT**  
**DOMMETTS LANE, FROME,**  
**BA11 4JT**

# Noticeboard

## DASH INTO THE FESTIVE SEASON!

Dorothy House's Santa and Elf Run is back for 2021. Taking place on Sunday 5 December, the event will see Santa's and Elves complete the 2.5k route at Bath Spa University. This Christmas-tastic family fun run is open to all ages and takes place along a 2.5km course through the beautiful grounds of Bath Spa University. Participants can choose to do the 2.5km route once or twice to make it a 5km run.



The fun run starts at 11am on 5 December with registration from 10am and a warm-up session at 10.50am.

Entry costs £15 for 12+ years and £7.50 for 2-11 year olds. All 12+ year old participants will receive a Santa suit and 2-11 year olds will receive an Elf hat at registration. The festive clothing is included in the entry fee plus refreshments after the run. All runners aged 16 years and under must be accompanied by an adult.

All adult entrants are asked to raise a minimum sponsorship of £30 or make a donation in lieu of sponsorship to help support patient care at Dorothy House.

Grab your Santa suit or elf hat, have fun and raise some money for your much-loved Hospice. Sign up today: <https://www.dorothyhouse.org.uk/get-involved/events/santa-elf-run-2021/>

A promotional poster for the "Light & Love" event. The background is dark with soft, out-of-focus bokeh lights in shades of orange and red. In the bottom right corner, there is a lit candle in a dark metal holder. The text is white and blue. The logo for "The Forever Friends Appeal" and "ruh" (Royal United Hospitals Bath) is in the top right corner. The main text reads "Light & Love" in a large, elegant font, followed by "Virtual Dedication Service to remember loved ones" and "Supporting End of Life & Palliative Care Services". The date "Monday 6th December 2021" is prominently displayed. Below this, it says "Register now at: www.foreverfriendsappeal.co.uk/light-and-love to dedicate a star for your loved ones". At the bottom right, it says "Registered Charity No. 1058323".

The Forever Friends Appeal  
ruh  
Fundraising charity of the  
Royal United Hospitals Bath

# Light & Love

Virtual Dedication Service to remember loved ones  
Supporting End of Life & Palliative Care Services

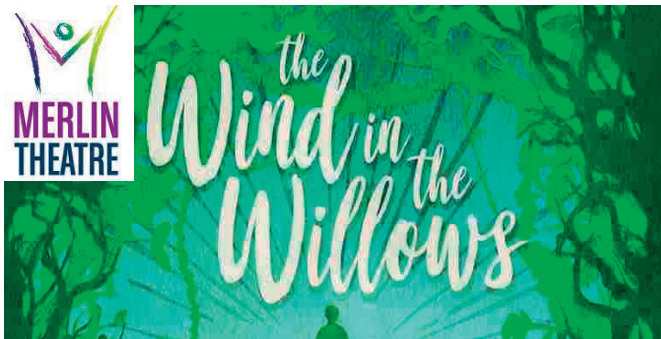
## Monday 6th December 2021

Register now at:  
[www.foreverfriendsappeal.co.uk/light-and-love](http://www.foreverfriendsappeal.co.uk/light-and-love)  
to dedicate a star for your loved ones

Registered Charity No. 1058323



## Noticeboard



WEDNESDAY  
08 DECEMBER

THURSDAY  
09 DECEMBER

FRIDAY  
10 DECEMBER

SATURDAY  
11 DECEMBER

AT 10AM, 3PM & 7PM

Visit: [merlintheatre.co.uk/what's on/performances/the wind in the willows](http://merlintheatre.co.uk/what's-on/performances/the-wind-in-the-willows)



### LAST UK CHRISTMAS POSTING DATES 2021

Friday 17 Dec - Royal Mail Bulk Mail Economy

Saturday 18 Dec - 2nd Class/2nd Class Signed For/Royal Mail 48

Tuesday 21 Dec - 1st Class/1st Class Signed For/Royal Mail 24/Royal Mail Tracked 48

Wednesday 22 Dec - Royal Mail Tracked 24

Thursday 23 Dec - Special Delivery Guaranteed

### BECKINGTON TENNIS CLUB CHRISTMAS CAMPS

Check out on Beckington Tennis Clubspark page details of junior and adult Holiday camps.

These include drills, quiz and fun competitions.

Plus LTA Youth Start course for junior beginners which includes Racket, 3 balls, T shirt and 6 lessons in the Christmas Holidays all for £34.99.

For further details email:  
[donna.tennis@hotmail.com](mailto:donna.tennis@hotmail.com)



### WEEKLY BINGO IN AID OF THE POD

Cash prize Bingo with great raffle prizes every Monday at Cheese and Grain in the Market Yard, Frome.

Doors open at 6pm, eyes down at 7.30pm.

The Cheese and Grain Cafe and Bar will be open for drinks, snacks and light meals.

All proceeds will go to support The Pod, a local charity that supports children and young people with additional needs.

# Parish Council Meeting Minutes

MINUTES OF MEETING OF RODE PARISH COUNCIL  
HELD IN RODE CHAPEL  
ON WEDNESDAY 10<sup>th</sup> NOVEMBER 2021 AT 7.30 pm

---

## UNCONFIRMED

### **Present:**

Cllr Mike Salmon - Chair (MS), Cllr Peter Travis (PT), Cllr Ann Edney (AE), Cllr Pat Restorick (PR),  
Cllr Steve Eyles (SE), Cllr Jim McAuliffe (JM), Cllr Elaine Butler (EB), Cllr A Pickett (AP)

**In attendance:** Cllr Linda Oliver, Cllr Barbi Lund, Hugh Williams – Clerk, and 1 member of the public

### **1. Public Participation:**

Concern was raised that dog waste was being put into the general waste bins in the village and not in the appropriate waste bins.

A large branch had recently been brought down by the wind from a tree in The Mead adjacent to the field. A request was made for this to be raised with the landowner.

Traffic was still speeding on High Street, however it was pointed out the PC was still waiting for a copy of the Memorandum from Somerset as this would clarify how many, and where, speed indicator devices (SIDs) could be installed in Rode and for how long. It was clarified that although Rode Hill and Bradford Road were mentioned in the last minutes as places for use of SIDs these were not restricted to these roads but could be used wherever there was a perceived problem. Cllr Oliver agreed to chase this issue up with her contacts at Somerset.

**2. Apologies for absence:** None

**3. Approval of the minutes:** The minutes of the Parish Council meeting held on 4<sup>th</sup> October were approved.

**4. Declarations of interest:** None.

**5. Report from County Councillor:** Cllr Oliver said she had held a number of conversations regarding the adoption of The Sportsman. Discussions were to be held with Wessex Water regarding the drainage of the site; this related mainly to surface water which was compounded by water run-off from the adjacent fields. Somerset had to be satisfied that there was no problem with drainage before they would adopt The Sportsman. She said the Parish Council (PC) should also approach the landowners about this water run-off to see if it could be controlled.



# Parish Council Meeting Minutes

The 20mph speed limit through the village was now waiting for the police to approve the Traffic Regulation Order, and she said she would continue to chase this up with Sara Davis.

With regard to speeding this would be a matter for the police and the PC would need to engage with them if speeding continued.

She said that cars stopping in the slip road from Straight Lane onto the A36 was something that should be taken up again with Highways England; it was added that any photographs of vehicles stopped on the slip road would add weight.

There was still no decision on whether Councillor elections would take place in 2022 or 2023 and a decision was expected in early 2022.

**6. Report form District Councillor:** Cllr Lund reported that Mendip District Council would continue as it is until 1 April 2023 when the Unitary Authority started.

She reported that all Council run car parks would be free for the week before Christmas from 18<sup>th</sup> December.

**7. Climate Emergency:** JM reported that a further meeting had been held and some clarity of what could be done had been reached. Younger people onto the committee were still sought. It was important that any ideas/actions required village wide support to be effective. The group hoped to arrange a number of Zoom presentations over the next year.

## **8. Actions from the previous meeting:**

- i) **Trees:** Reports on the trees on The Mead and Clay Lane had been prepared but currently these could not be opened and Word versions would be requested. The trees on The Mead, with the branch falling off, were of concern and County Roads should be contacted about these. The Clerk agreed to do this.  
The PC agreed no action was required regarding the trees on Halfpenny Row, any cutting back could encourage lorries to use this small road.
- ii) **Dog bin foot of Marsh Road:** This was still to be moved, but there was no urgency until weather got hot again.
- iii) **Fingerpost – Straight Lane:** The Clerk reported that the new finger had now been made and the post would be removed to be cleaned repainted and finger added, hopefully in the next few weeks. (Note: it was removed on following day)
- iv) **Notice board by Memorial Hall:** It was reported that the Memorial Hall had said they did not own the board. Checks would be made to ascertain the owners. It was confirmed it should be replaced.
- v) **Paths Officer:** Cathy and Nick Taylor were the new village Paths Officers. Caro Smith would retain the role of issuing passes.

# Parish Council Meeting Minutes

- vi) **Calm Engineering:** There was no date for work to start. The hole on Lower Street was causing some pedestrians difficulties and this would be investigated.
- vii) **Building in grounds of Coach House:** Checks would be made to see if this was an inhabited building as no planning permission had been given for it to be so.
- viii) **The Bell:** It was reported that possibly some action could be taken on an unoccupied listed building to ensure it did not fall into disrepair, this would be pursued.

## **9. Highways:**

**i) Speed Watch:** It was essential that the PC determined if there were any restrictions in using more SIDs in the village and any agreement with Somerset required clarification. Cllr Oliver agreed to make enquiries.

**ii) No idling – Mendip initiative:** Two signs had now been delivered and these would be put up outside the school.

## **10. Planning matters:**

**i. New applications: 2021/2329/TCA:** Reduce by 1 to 1.5 all round two yew trees – Rode Chapel. No objections, however it was unclear why this work had been done in two stages, the PC was unwilling to fully fund the second cut.

**2021/2368/TCA:** Reduce magnolia by 1m, reduce plum by 1.5m and reshape apple tree – 5 Lower Street. No objections.

**2021/2412/TCA:** Fell two willow trees and re-pollard third willow tree – 33 Lower Street. No objections.

**2021/2494/TCA:** Fell apple tree, crown lift to 5m beech and alder trees, reduce beech hedge to 2m and reduce east side of beech by 3m – 16 Lower Street. No objections.

**ii. Mendip decisions: 2021/1816/LBC:** Replace existing stormsure profiled windows and panelling with new conservation timber framed windows and panelling – 17B High Street. Approved.

**iii) Local Plan Part 2:** The Mendip District Council Cabinet meeting on 4 October recommended to Full Council that the Local Plan be adopted at next Full Council meeting. Representations not to adopt the Plan were made by Norton St Philip PC and the District Councillor. On 13 October Mendip Planning Board unanimously turned down the application for development of one of the sites allocated in the Local Plan - BK1 in Beckington.

**11. Church Farm access to village/footpaths and playing field:** The path from the site to the playing field was due to finally start during w/c 15

# Parish Council Meeting Minutes

November as the contract has now been let. The cut through to the playing field would need to be made and fencing installed.

The rather dated Memorandum of Understanding between the PC and the Playing Field, which was in places unclear, would be rewritten and circulated to both parties for approval and signatures.

**12. Unitary Authority/Frome:** The Chair reported that Frome, due to its distance from Taunton, had formed a group to include surrounding PCs, giving a body representing 50,000 people. This Local Community Network (LCN) was one of four pilots and was looking at families and younger children issues. However, all this was in early stages and there was uncertainty over these LCNs. Cllr Oliver reported she was on the advisory group and would share relevant information on the pilots.

**13. Grassed areas in Rode:** Currently Eagle maintained these areas around the village, however a pilot rewilding of the area near the Memorial Hall had started with AP and EB and others clearing the area and sowing seed. This area would be taken off the Eagle contract for 2022. Additionally, Barrow Farm paths would be taken off the Eagle contract as they only cut the grass and alternative arrangements with Matt Lucas had been made to cut the grass and trim the undergrowth during the year. The PC agreed to fund the wild meadow seeds etc.

**14. Conservation Area/Neighbourhood Plan:** AP had held discussions with both Mendip and consultant over the Rode Neighbourhood Plan (NP). The Plan was still a living document but its strength depended to some extent on the housing supply that Mendip had: if Mendip had a full 5-year housing supply then the development limits in the NP did not have a 2-year time limit, if Mendip only had a 2-year housing supply then the NP had only a 2-year development limit. SE and AP confirmed that Mendip had at least a 3-year housing supply, which meant a new NP was not required. However, the PC should conduct regular reviews of the NP and the meeting agreed to review it at the next meeting. Further reviews, which should include climate assessments, should be conducted every 1 to 2 years.

Any new Neighbourhood Plan would require extra housing to be identified in Rode, additionally landowners would need to be consulted over potential new development sites. A new NP would necessitate the consultation of the whole village.

AP reported that increasing the Conservation Area within Rode could be an easier option than drawing up a new NP. This was however more of a legalistic process and it was proposed and agreed that an initial sum of £500 could be spent on getting advice on the feasibility of extending the Conservation Area.

# Parish Council Meeting Minutes

Again, any proposal would require support from the whole village prior to submission.

**15. Bus services:** PT reported that Somerset had put in a bid for £160 million to improve bus services across the whole county following the work done by the Bus Back Better Group. He said that 80 representatives from across the county had contributed to the Group and thanks were given to Lucy Travis for getting such good participation. Somerset had indicated it was keen to improve services but could not do so without considerable funding. How much would be received was awaited.

He added that Frome was planning to introduce an electric bus into service.

**16. Remembrance Day service:** The PC agreed to donate £25.00 to the poppy appeal for the Parish Council wreath and it was agreed the Chair would lay it on Sunday.

**17. Allotments:** There was currently no land available for extra allotments to relieve the waiting list. However, it was agreed to put a request in The Link and on Facebook for possible new land.

## **18. Financial matters:**

i) The Clerk reported that the current financial situation (circulated prior to the meeting) indicated the Parish Council should break even or make a small loss for the year.

ii) The following payments were agreed:

The Cross Keys (Remembrance Day food)	£100.00
Heritage Matters	£2,455.20
Downlands Tree Surgery	£360.00
Eagle Grounds Maintenance	£725.12
Clerk salary	£220.82
HMRC PAYE	£55.00
Eagle Grounds Maintenance (S106 land)	£540.00
M Lucas	£35.00
Rode Somerset British Legion Poppy Appeal	£25.00

## **19. Date of Next Meeting:**

The next meeting will be again held in Rode Chapel at:

**7.30 pm on Tuesday 7<sup>th</sup> December**

The Meeting closed at 10.30 pm.

*Website: [rodevillage.com/parish-council/](http://rodevillage.com/parish-council/)*

# Parish Council Meeting Minutes

## HIGHLIGHTS FROM TELLISFORD PARISH MEETING (TPM)

On Monday 15<sup>th</sup> November, 17 residents of Tellisford and Woolverton attended the Parish Meeting in Tellisford Church. We were joined by our County Councillor and our District Councillor. Seven households sent apologies.

The Chairman Ray Floyd said that Ash Morrell had agreed to continue as Vice-Chairman, and sent his apologies today as his daughter was born soon after 3am this morning; the meeting sent its congratulations. Mark Shaw, member of the Planning Sub-Committee, is moving out of Woolverton; he will be sorely missed and someone is needed to take his place on the committee. Paul Brimble was nominated and unanimously elected. Paul Douglas, Footpaths Officer, is also moving away so someone is needed to carry on this role, the remit for which is to provide an informal focal point for co-ordinating matters concerning our villages' footpaths. Paul and Mark were thanked for all their hard work.

Last Thursday 11<sup>th</sup> November was the first Remembrance Day since completing repairs to Woolverton War Memorial. New weeds around it had been removed, and two minutes of silence kept at the eleventh hour.

The Planning Sub-Committee's report since the last Parish Meeting on 21<sup>st</sup> May 2021 is summarized below:

Application	Site	Subject and Outcome
2020/1115/CLP APP/Q3305/X/ 20/3264330	Lower Chatley Farm	Certificate of Proposed Use/Development in connection with caravan park: Planning Inspector issued Certificate of Lawful Development on 20 May 2021
2021/0233/FUL	Lower Chatley Farm	Application for holiday park comprising 15 holiday lodges, 2 lakes with central cascade and footbridge, access track, and associated landscaping: approved with conditions 14 October 2021
2021/0527/HSE	The Rydings, Rode Manor	Conversion of existing office out-building to self-contained annexe: approved 7 July 2021
2021/0878/FUL	1 The Leazes, Woolverton	Conversion of dwelling into 2 dwellings, demolition of existing conservatory and associated works: approved 5 July 2021
2021/0824/FUL	Lower Chatley Farm	Improving existing field access (retention of hedge removal already completed). Pending.
2021/0825/FUL	Lower Chatley Farm	Change of use of land from agricultural to <i>sui generis</i> for use as a construction industry training site. Erection of mobile classrooms and creation of a field track (retrospective). Pending
2021/0913/TCA	Glebe Barn, Tellisford	T2 – Ash – Fell; approved 16 June 2021
2021/2006/FUL	Unit 1, Plot 1, Sleight Farm Woolverton	Renewal of temporary planning permission for temporary workers' dwelling (previous ref 2019/2654/FUL) Approved 12 November 2021

# Parish Council Meeting Minutes

Application	Site	Subject and Outcome
2021/2318/PAA	Spinney Farm	Prior approval for a proposed change of use of agricultural building to 2No. larger dwelling-houses (Class C3) and for associated operational development. Pending.

Councillor Barbi Lund said that the Somerset branch of Council for the Protection of Rural England was running a webinar on rewilding this week. She also said that there will be free parking in Mendip District Council's car parks before Christmas. The vote on the future of Somerset County Council and the District Councils had resulted in the unitary authority option being selected.

Councillor Linda Oliver gave an update on establishing the new unitary authority, which will replace Somerset County Council and the four District Councils (Mendip, Sedgemoor, South Somerset and Somerset-West-and-Taunton). She is on the Local Government Advisory Board for the county, representing rural communities. She does not know where the unitary authority will be based. All existing scrutiny panels (e.g. planning) will be reorganized in one scrutiny department. A Strategic Committee is making these decisions, there is a lot to be done, not much time, and it's moving quickly. Central government is pushing for elections in 2022, before the Boundary Commission draws up the boundaries of the proposed 85 "Divisions" (replacing 54 County Wards and 126 District Wards) which will probably have two Councillors each.

The two Councillors exchanged views on when the current cohort of District councillors will stop work (2022, or 2023 i.e. the end of the four years for which they were elected). The election date is unclear; 2022 would not give much time for candidates to prepare; it would be nice if the Secretary of State could accept that elections should take place after the boundary review and the defining of new Divisions' boundaries.

Action items were identified for a strategy to clear blocked offlets on the road between Tellisford crossroads and Oak Tree Corner, starting with contacting staff at County Roads.

The pill box by Tellisford weir (in Tellisford Conservation Area) was cleared on 2<sup>nd</sup> October by volunteers from the village and a wild swimming group. Thanks were recorded to all who helped on the ground, and who provided the conveyor to lift the rubbish, and by financial contributions; the greatest cost was disposing of the contaminated waste left after removing as much as feasible for recycling.

*Rachel Feilden, Hon.*  
Minutes Clerk



## ...and finally

### WHERE IN HARDINGTON VALE?

Where, in Hardington Vale, would you see this view?

Did you recognise the church in last month's photograph? It was Farleigh Hungerford church.



### Sudoku

	4	1	7	2			8	
	3			6				
	7	5	1	3			6	
						2		5
3					1			
		4	8				3	
		9	2				1	
1				5				
					9			7

### Last month's Codeword

9	E	8	16	12	9	11		16	19	9	16	12			
	N		A	M	E	L		A	B	E	A	M			
8	N		D		X		22	J		E		M	8		
22	21	22	2	10	6	21		5	21	16	7	26			
	J	U	J	I	T	S	U		Q	U	A	C	K		
23			21		23		12	M	21	U	18		9		
	O		U		O								E		
1	23	17	9	11	L		25	P	R	E	10	9	15	10	
	Y	O	D	E	L									T	
			24	G				1	Y		6	S		7	
16	24	9	8	7	C	1	Y		6	S	10	2	10	7	3
	A	G	E	N	C										H
11	L				2	I		6	S			4			
7	16	21	6	10	2	7				11	L	23	23	8	1
	C	A	U	S	T	I	C					O	O	N	Y
23			25		16	A		23		16		13		23	
	O		P							A		F		O	
14	16	25	2	17			4	W	16	20	11	23	7	26	
	V	A	P	I	D										K
9	E		9	E		9	E		11	L	14	V		11	9
															E
	13	20	2	11	11	L		14	16	8	17	16	11	L	
	F	R	I	L	L										

### POEM OF THE MONTH

Frosty days and ice-still nights,  
 Fir trees trimmed with tiny lights,  
 Sound of sleigh bells in the snow,  
 That was Christmas long ago.

Footsteps stealthy on the stair,  
 Sweet-voiced carols in the air,  
 Stocking hanging in a row,  
 Tell of Christmas long ago.

Starry nights so still and blue,  
 Good friends calling out to you,  
 Life, so fact, will always slow...  
 For dreams of Christmas long ago.



*Jo Geis, 'Christmas Long Ago'*

## Jennie Gilbert Pottery Courses Wiltshire & France

4 St. Martin's Workshops, Manor Farm, Fifield Bavant, Broadchalke, SP5 5HT

We run several courses in the Chalke valley and the Lot in South West France.

Choose from 2 or 4 day courses in Spring and Autumn.

Look at my website for details, dates and prices

Or pop in to the workshop for a chat.

01722 780402

jennie.gilbert@yahoo.co.uk

www.jenniegilbert.co.uk



# BEWLEY

Funeral Directors Limited

*Our family are here for your family*

Award winning family funeral directors serving Trowbridge & Surrounding areas for over 50 years. Our friendly staff are here to help you and your family with all necessary support and guidance providing Simple or Traditional and Bespoke Funerals.

*Thinking of planning ahead? Ask for details about our Golden Charter Funeral Plans*

FOR 24HR SERVICE PLEASE CALL **01225 353525**

MANVERS STREET, TROWBRIDGE, BA148EH



Golden Charter  
Funeral Plans 





# Hatha Yoga Class

**with Selina Ratcliffe**

Registered UK Yoga Alliance professional

Improve your health and wellbeing through the practice of yoga

**Every Wednesday**

**10.00am - 11.00am**

**Rode Village Hall**

**£10pp / £8pp concessions**

**No booking required / everyone welcome**

**For more info contact Selina on 07855481829**

**[www.selinaratcliffe.com](http://www.selinaratcliffe.com)**

## MATTHEW'S MOWING & MORE

MOWING, STRIMMING,  
GARDEN CLEARANCE,  
AND MORE!

ALL JOBS CONSIDERED,  
COMPETITIVE RATES,  
PUBLIC LIABILITY  
INSURANCE COVERED.

**MOBILE :  
07972344720**

## PROPERTY & BUILDING MAINTENANCE

**M Stock**

**01373 672090**

**or 07801 355384**

I can give you a free estimate &  
I have over 30 years experience

Painting inside & out  
and general decorating

Path laying, wall & patio building

Brick & Stonework

Re-pointing work

Roofing

Fencing: Chain link, wooden or panel

Garden Maintenance

£5 million public liability insurance

# GREEN MAN



**Professional  
Eco-friendly  
Carpet,  
Rug, Hard Floor,  
& Upholstery  
Cleaning**



**FROME: 01373 470416**

**[www.greenmancleaning.co.uk](http://www.greenmancleaning.co.uk)**



## ELECTEC



### electrical and technical services

- Domestic and commercial work
- Local electrician
- Homeowner electrical installation condition reports for home or rental (EICR)
- Rewire, upgrade or bespoke
- Maintenance, adapt or fix
- A company that strives to corroborate



**E** [jeremy@electec.co.uk](mailto:jeremy@electec.co.uk)

**T** 07834 830591

**C** [www.electec.co.uk](http://www.electec.co.uk)





## Sharon's Foot Clinic



**S.A.C Dip FHPT S.A.C Dip FHPP  
Fully Insured and Highly Trained**

**For The Professional Treatment Of:**

- Corns • Callus • Cracked Heels • Athletes Foot**
- Fungal Infections • Thickened Nails • In growing Nails**
- Diabetic Foot Care • Verrucas • Nail Cutting • Nail Reconstruction**

Contact **Sharon** on **01373 836734** or **07728 200402**

**Clinic Appointments at 12 Sunny Hill Nunney BA11 4ND**

**Home Visits also Available.**

# GARAGE DOOR & PRE-FABRICATED BUILDING SPECIALISTS

## WE'LL RECOMMEND A SOLUTION THAT SUITS YOU, NOT US

That means we listen to your **needs**, take on board your **wants** and, very importantly, take into account your **budget**. We can then advise you on the best way to go; whether that be a complete bespoke garage, top of the range automated door, a basic up and over or simply a repair.

So with direct access to the top manufacturers, a huge stock of spare parts for all makes and our own teams of experienced engineers, you can be assured of the result you want.

**Trading Standards Approved Trader**



Call Debbie or Nicola on **01373 580298**  
Showroom: Radstock Rd, Midsomer Norton, BA3 2AD  
[www.sdsgaragedoors.co.uk](http://www.sdsgaragedoors.co.uk)

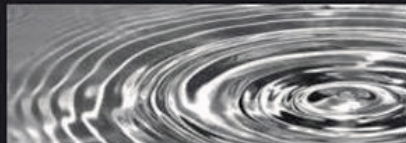


For details of our pre-fab buildings please visit: [www.sdsconcretegarages.co.uk](http://www.sdsconcretegarages.co.uk)





Do you need a  
Plumber? Call



**PAUL ANTELL  
PLUMBING**

**07890 366832  
01373 467427**

Professional, Reliable, Friendly & Local  
paulantellplumbing@talktalk.net  
www.paulantellplumbing.co.uk

**Wash'd Up Crocks**

Whatever your event,  
large or small, I can supply

**Crockery, Cutlery, Glassware,  
Linen and Vintage Crockery**

With reasonable rates  
and **NO** washing up - it pays to hire  
Delivery/Collection service available

For a quotation contact Helen Shorten  
Office - 01373 830141  
Mobile - 07746410401  
Email - info@washedupcrocks.co.uk  
**www.washedupcrocks.co.uk**

## Coffee with an Architect?

Thinking about a project?

An Architect with over 20 years' experience and a genuine love of historic buildings and coffee, I would be happy to meet and discuss your plans and ideas.  
For a free initial chat please contact:

Anna Hammond BA DipArch MSc ARB  
e: annahammond@ymail.com  
m: 0772 941 1360 t: 01373 834439





**24/7 Personal service from a family of Independent Funeral Directors**

Proud to have served our community for over 20 years

Golden Leaves Guaranteed Plans available

Cote House, 51 Timbrell Street, Trowbridge, BA14 8PN Telephone 01225 775259

16 Warminster Road, Westbury, BA13 3PB Telephone 01373 864944

[www.elizabethsnell.co.uk](http://www.elizabethsnell.co.uk)

[info@elizabethsnell.co.uk](mailto:info@elizabethsnell.co.uk)

**BECKINGTON PHYSIOTHERAPY PRACTICE**  
**Has relocated, come and see us at our new address:**  
**Shawford Farm (A36), Beckington, BA11 6SQ**

**Keep active with Physiotherapy**

**Lesley Fussell MCSP, SRP, AACP**

With over 30 years of experience specialising in treatment  
of muscle and joint problems including:  
Back and neck pain - Work and posture related disorders -  
Sports injuries - Arthritic conditions -  
Joint & muscle problems following accidents and surgery. -

**Home visits can be arranged.**

**Telephone: 01373 831483**

**Email: [lfussellphysio@gmail.com](mailto:lfussellphysio@gmail.com)**

## Handyman Services

home & garden maintenance

for all your home improvements  
and repairs inside and out.  
decorating~carpentry~plumbing  
tiling~flat pack~gardening~ponds  
decking~sheds~fencing and more.

call Gary.

**07747 771016**

**01373 859930**

handyman-services-gary@outlook.com

## PHYSIOTHERAPY & ACUPUNCTURE in Rode

**Merete Bates** MCSP, SRP

**Japonica Clinic**  
**The High Street**

**07734058025**

[www.japonicaclinic.com](http://www.japonicaclinic.com)

[info@japonicaclinic.com](mailto:info@japonicaclinic.com)



**SEYMOURS COURT**

**Bed & Breakfast and  
Wedding Reception  
Venue in Beckington**

**A marquee venue for  
your special day  
or stay with us in our  
luxury accommodation**

**Contact:**

**01373 830466**

**or 07712 580586**

[info@seymourscourt.co.uk](mailto:info@seymourscourt.co.uk)

[www.seymourscourt.co.uk](http://www.seymourscourt.co.uk)

## Village Window Valet



*Are you looking for a  
window cleaner?  
Call Adam for a  
fast & reliable quote*

**☎ 01373 830877**

**☎ 07801 151207**

**✉ [dumbcara@hotmail.com](mailto:dumbcara@hotmail.com)**

Adam Figiel, 2 Green Park, Church Lane, Rode, Nr Bath Somerset

**WINDOW, CONSERVATORY, FASCIA  
& GUTTER CLEANING SERVICES**





# FROME AREA BUILDING SUPPLIES LTD

01373 831550 [www.fromeareabuildingsupplies.com](http://www.fromeareabuildingsupplies.com)

A truly independent supplier of building and DIY materials for any project around the home or for any building projects

Stocking over 3000 products... Timber, Plumbing, Drainage, Landscaping, Construction, Electrical, Decorating and much, much more

Located just outside Rode off the A361

We offer a free delivery service in the local area

Come and pay us a visit or take a look at our website featuring many of our products



# FROME AREA BUILDING SUPPLIES LTD

01373 831550 [www.fromeareabuildingsupplies.com](http://www.fromeareabuildingsupplies.com)

## LEOZAMP & CO

1 LANGHAM PLACE, RODE

T: 01373 830233

**For all your electrical requirements.  
Rewiring, Repairs, Sales & Public Address,  
Intruder Alarm Systems.**



**For domestic appliance repairs call:  
Domesticare 01373 467351**

# Brian Brewer

Carpet & Upholstery Cleaning Specialist

Est. 2002

Carpets

Rugs

Sofa's

Mattresses

Commercial & Domestic

Spot Cleaning

Stain Removal

Stain Protection

Flea Treatments

Fully Insured



26 Grove Mead, Frome, Somerset BA11 4BU

Tel: 01373 300642 | Mobile: 07866 433365

Email: brewer.brewer54@gmail.com



*Beckington Motors*  
Keeping you *on the road* since 1960



- Local friendly garage
- Air conditioning
- MOTs and servicing
- Tyres, batteries and exhausts
- Vehicle diagnostics
-  Specialist Land Rover diagnostics
- 4 wheel laser alignment
- Range of courtesy cars
- Recovery service
- Fully qualified technicians
-  Calor Gas supplier

Bath Road, Beckington BA11 6SW | 01373 830238 | [www.beckingtonmotors.co.uk](http://www.beckingtonmotors.co.uk)

Opening hours: Mon-Fri 8am-5:30pm, Sat 8:30am-12:30pm |  Find us on Facebook





Art Classes in Rode at Jan's Kitchen Table  
– tuition for catching the imagination

At Jan's Kitchen Table the tailor-made tuition is all about you, your individuality, discovering your imagination and having fun

Be inspired to paint, draw and illustrate with professional artist and illustrator Jan Nesbitt (BA Hons in Fine Art and a wealth of experience!)

Mondays and Tuesdays 10am to 1pm  
Thursday evenings 7pm to 9pm  
Tel: 01373 830941 Email: [jan@jannesbittartwork.com](mailto:jan@jannesbittartwork.com)  
[www.jannesbittartwork.com](http://www.jannesbittartwork.com)

## HOLISTIC TREATMENTS

Available in the centre of Rode

Massage • Organic Facials •  
Bach Flower Therapy •  
Ear Candling



Celia Stewart  
07761-016521  
[massage.bach@gmail.com](mailto:massage.bach@gmail.com)  
[www.bathholistic.co.uk](http://www.bathholistic.co.uk)



**House  
proud**  
of Rode

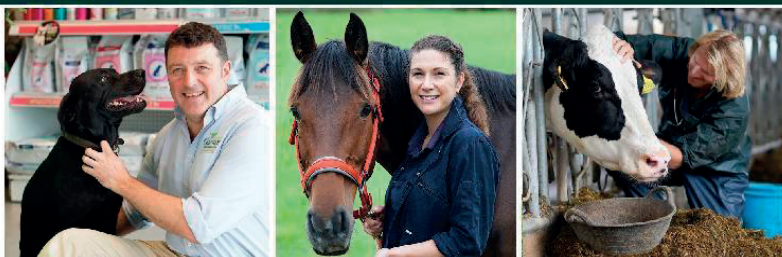
Home Improvements  
For all those jobs that make a house a home

- Carpentry, cabinet making, shelving, wooden flooring
- Furniture Restoration
- Interior/Exterior Decorating
- Bathrooms & Kitchens
- Gardens – patios & decking
- General Maintenance & DIY

Contact David Griffiths  
Mobile 07732 280940  
Home 01373 830366

# garston

VETERINARY GROUP



Not all veterinary practices are the same  
 We are available to care for your pets, horses and animals 24/7  
 If your pet is overnight with us, they are never left alone  
 Garston vets - a truly independent approach  
 to animal care for over 100 years.



Frome 01373 452225	Melksham 01225 617779	Trowbridge 01225 754021	Warminster 01985 213350	Westbury 01373 301448
-----------------------	--------------------------	----------------------------	----------------------------	--------------------------



[www.garstonvets.co.uk](http://www.garstonvets.co.uk)



## Loose covers and curtains

Individually made to  
suit your requirements

Free estimates

Sue Hocking  
 01225 865706  
 email:  
[sue.hocking@talktalk.net](mailto:sue.hocking@talktalk.net)



### CARPENTER AND JOINER Martin Hale

Professional Carpentry Services  
 Custom Made Joinery  
 All Interior & exterior work  
 Renovation & Maintenance  
 Period properties a pleasure

City & Guilds Qualified

Quality service, free estimates

North Bradley  
 01225 762495  
 Mobile: 07768 838757  
 Email: [Martin.hale27@gmail.com](mailto:Martin.hale27@gmail.com)



Call James:  
07773280939 or  
01373 830571

**Seasoned Barn Dried Logs!** 🔥

- 🔥 1/2 load (1/2 cube) £45
- 🔥 1 load (cubic meter) £90
- 🔥 2 load (2 cubic meters) £180
- 🔥 Bagged logs (approx 12 logs per bag) £5
- 🔥 Kindling £5
- 🔥 Natural firelighters (40 pack) £5



Registered Member of The British  
Association of Foot Health Professionals

Foot Health Professional  
Kirsten Penny MCFHP MAFHP

Home Visiting Practice

**Corns • Hardskin • Thick Nails**  
**• Ingrowing Toenails**  
*and much more*

**Why Suffer?**

Call 07761 180819  
for an appointment  
(Frome and surrounding areas)

**For all your Foot Care Needs**

# THOMAS & ELLIS

Chartered Certified Accountants

A local family practice helping businesses  
and individuals for over 30 years

Contact Jo Ellis on:

01225 862259 or joanna@thomasandellis.co.uk

ACCA

[www.thomasandellis.co.uk](http://www.thomasandellis.co.uk)

**EXPERIENCED  
LOCAL  
HANDYMAN  
NO JOB TOO SMALL  
SHELVING, SHUTTERS,  
FLOORING, WINDOWS  
AND DOORS REPAIRED OR  
PURPOSE MADE. FLAT  
PACKS ASSEMBLED.**

Call Peter Stratford on  
01373 831260 or  
07870 453597

## **Woodland Carpentry**

- \* Fitted Kitchens
- \* Worktops
- \* Bedroom Furniture
- \* Stud Partitions
- \* Door Linings
- \* Doors Hung
- \* Skirting Boards

**And much more, just ask**

**Call Kevin Page**

**On  
07944 109397**



## **Downlands Tree Surgery**

*Expert Tree Care*

- Skilled Pruning
- Precision Tree Removal
- Tree Stump Removal
- Qualified & Insured
- Scrub Clearance
- Immaculate Clear Up

For tree advice and a prompt quotation  
Telephone Jon Burgess

**01985 841057**



## Need help keeping up with today's digital world ? Fed up with feeling frustrated, baffled or confused ?

"Kathryn has been supporting people and their tech gadgets for years, understanding the frustrations and confusion these can cause. Her skills in IT enable her to clearly explain and implement tech in everyday life to make things easier, for business and personal use or just fun.

Keeping in touch with how things change but always keeping it real and relevant."



Get confident and competent at using your tech with:

- one-to-one customized tuition
- expert technical support
- friendly affordable advice
- helpful purchasing guidance

Kathryn Price 07427 104249

kathryn@kspstechcare.co.uk



**KSP**  
**TechCare**

GIFT certificates available

£25 per hour support  
(valid for 6 months)

Find out how YOUR tech can make life easier for YOU ...

## PLANS FOR EXTENSIONS

- Plans prepared for Planning Listed Building and Building Regulation applications
- We have over 35 years experience and are able to give good professional advice

For free initial consultation please contact:

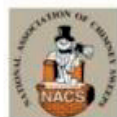
**IAN SING**

MRICS MASI MCIQB MCIAT

ian@larnier-sing.com

01373 830836 / 07783345541

## Martin's Chimney Services



Professionally trained to sweep all types of chimneys and appliances

Fully insured, offering a tidy, clean and efficient service



Bird guards supplied and fitted

Insurance approved certificates issued

NACS Member

Tel: 01225 768969 / 07909 078500

Email: martinschimney@hotmail.com

www.martinschimneyservices.co.uk



# HomeworksDesign

[www.homeworksdesign.co.uk](http://www.homeworksdesign.co.uk)

07768020204



## Planning applications

Extensions, kitchens, garden cabins, lofts

Design & Build



### Botox and Injectables, Rode

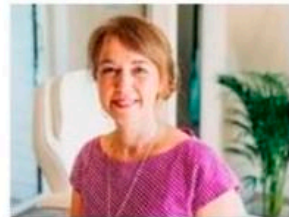
Private clinic in Rode offering Botox and facial fillers.  
All procedures carried out by Dr Abby Burgess, an experienced NHS GP.  
Personal service of creating a fresh, more youthful, look.

Contact Dr Burgess for an initial appointment to discuss your needs.

Email [monkleyaesthetics@gmail.com](mailto:monkleyaesthetics@gmail.com)

Website [www.monkleyaesthetics.co.uk](http://www.monkleyaesthetics.co.uk)

Tel/Text 07891 057074



Find Monkley Aesthetics on Instagram and Facebook

# Decluttering Services by Nicole

Professional • Respectful • Discreet  
Fully Insured & DBS certified



07776 138691 or 01373 830071  
declutteringbynicole@gmail.com



Help and support with:  
general reorganisation & tidying  
moving house packing & unpacking  
family bereavement clearance  
grave tending  
divorce/separation distribution  
clothes or children's toys clear-out  
office restructuring & archiving



## Manor Farm Offices, Corsley



Beautiful Rural Office  
Space Now Available

From £514 per month

Manor Farm Offices,  
Corsley, Warminster,  
BA12 7QE

01373 486800  
landlord@heywoodhouse.com

[www.heywoodhouse.com/manor-farm-office-corsley](http://www.heywoodhouse.com/manor-farm-office-corsley)



# Beckington Pre-School

Open term time  
from 8:45am



Children aged 2-4  
welcome  
30 hours funding accepted

Beckington Baptist  
Church Hall  
[www.beckingtonpre-school.co.uk](http://www.beckingtonpre-school.co.uk)  
**01373 831492**  
[info@beckingtonpre-school.co.uk](mailto:info@beckingtonpre-school.co.uk)  
Find us on 

Charity no. 1035832



## Hexagon

### Prefabricated Buildings

All in one service including removal of the old building, base work, & new building supply & installation



### Garage Doors

Repairs on all types of garage doors  
Replacement doors to suit your budget and requirements  
Electric remote-control automation



### Excellent – Service, Excellent – Price

No obligation site survey to discuss your requirements



**Contact us:** on 07516 419 860

**Email:** [hexagon.pbgd@gmail.com](mailto:hexagon.pbgd@gmail.com)

View our **website** for more details:



[www.hexagonprefabricatedbuildingsandgaragedoors.co.uk](http://www.hexagonprefabricatedbuildingsandgaragedoors.co.uk)



Live Zoom Yoga classes with Stephanie – Rode's Yoga Teacher.

Choose to attend in person at Rode Memorial Hall (£10 per class)

Or in the comfort of your own home via Zoom (£8 per class).

Every Friday 9.00am.

**FIRST CLASS FREE FOR NEWBIES!**

Contact:  
yogawithstephanieharrison@gmail.com  
07780 601381

Experienced teacher and down to earth classes  
levels welcome & mats provided

Friendly All

[www.facebook.com/yogawithstephanieharrison](http://www.facebook.com/yogawithstephanieharrison)

## Pelican Plumbing



Trusted and reliable local plumber. For bathroom installations, leaks, new taps, toilets and plumbing maintenance covering Bath and surrounding villages. call Simon Preston.

01373834991 or 07982051869  
simon@pelicanplumbing.co.uk

**Nashblend Limited trading as:**

## **West Country Tiling Company**

**Pitched Roofing, Lead Work, Timber Treatment.**

**Conservation work is our speciality.**

**Tel: 01373 462224**

## **S. A. M. SCAFFOLD**

**Safety and Maintenance Scaffold,**

**We can meet all your scaffold requirements.**

**Tel: 01373 461511**



## Hardington Vale Church Services – January 2022

DATE	TIME	SERVICE	LEADER
Sunday 2 January	9.00 am 10.30 am 11.00 am 6.00 pm	Norton St Philip, Informal Breakfast Rode St Lawrence, Holy Communion Laverton, Holy Communion Rode Chapel, Meeting Place	F & R Stewart C Walker J Robinson
Monday 3 January	9.00 am	Norton St Philip, Morning Prayer	
Tuesday 4 January	6.00 pm	Tellisford, Evening Prayer	
Wednesday 5 January	8.30 am 12.15 pm 6.00 pm	Hemington, Morning Prayer Rode Chapel, Ecumenical Holy Communion Rode Chapel, Ecumenical Informal Prayer	C Walker Zoom
Thursday 6 January	6.00 pm	Norton St Philip, Silent Prayer	
Sunday 9 January	9.00 am 9.00 am 10.30 am 11.00 am	Tellisford, Matins Rode St Lawrence, Informal Breakfast Norton St Philip, Holy Communion Laverton, Matins	B Day C Walker/M Harrison
Monday 10 January	9.00 am	Norton St Philip, Morning Prayer	
Tuesday 11 January	5.00 pm	Laverton, Evening Prayer	
Wednesday 12 January	8.30 am 6.00 pm	Hemington, Morning Prayer Rode Chapel, Ecumenical Informal Prayer	Zoom
Thursday 13 January	6.00 pm	Norton St Philip, Silent Prayer	
Sunday 16 January	9.00 am 10.30 am 10.30 am 11.00 am	Farleigh Hungerford, Morning Worship Rode St Lawrence, Holy Communion Norton St Philip, Informal Worship Laverton, Matins	J Robinson S Kivett M Walker/J Robinson
Monday 17 January	9.00 am	Norton St Philip, Morning Prayer	
Tuesday 18 January	6.00 pm	Tellisford, Evening Prayer	
Wednesday 19 January	8.30 am 6.00 pm	Hemington, Morning Prayer Rode Chapel, Ecumenical Informal Prayer	Zoom
Thursday 20 January	6.00 pm	Norton St Philip, Silent Prayer	
Sunday 23 January	9.00 am 10.30 am 10.30 am 11.00 am	Tellisford, Holy Communion Rode, Informal Worship Norton St Philip, Holy Communion Laverton, Matins	B Day/C Walker J Robinson/M Harrison B Day/C Walker
Monday 24 January	9.00 am	Norton St Philip, Morning Prayer	
Tuesday 25 January	5.00 pm	Laverton, Evening Prayer	
Wednesday 26 January	8.30 am 6.00 pm	Hemington, Morning Prayer Rode Chapel, Ecumenical Informal Prayer	Zoom
Thursday 27 January	6.00 pm	Norton St Philip, Silent Prayer	
Sunday 30 January	10.30 am	Rode St Lawrence, United Parish Holy Communion	C Walker/J Robinson





## Hardington Vale Church Services – December 2021

DATE	TIME	SERVICE	LEADER
<b>Wednesday 1 December</b>	8.30 am 12.15 pm 6.00 pm	<b>Hemington</b> , Morning Prayer <b>Rode Chapel</b> , Ecumenical Holy Communion <b>Rode Chapel</b> , Informal Prayer	C Walker Zoom
<b>Thursday 2 December</b>	6.00 pm	<b>Norton St Philip</b> , Silent Prayer	
<b>Sunday 5 December</b>	9.00 am  10.30 am 11.00 am 6.00 pm	<b>Norton St Philip &amp; Rode</b> , Informal Breakfast in NSP <b>Rode St Lawrence</b> , Holy Communion <b>Laverton</b> , Holy Communion <b>Rode Chapel</b> , Meeting Place	A & S Filkins  J Robinson/M Harrison C Walker
<b>Monday 6 December</b>	9.00 am	<b>Norton St Philip</b> , Morning Prayer	
<b>Tuesday 7 December</b>	6.00 pm	<b>Tellisford</b> , Evening Prayer	
<b>Wednesday 8 December</b>	8.30 am 6.00 pm	<b>Hemington</b> , Morning Prayer <b>Rode Chapel</b> , Informal Prayer	Zoom
<b>Thursday 9 December</b>	6.00 pm	<b>Norton St Philip</b> , Silent Prayer	
<b>Sunday 12 December</b>	9.00 am 10.30 am 11.00 am 3.00 pm 6.00 pm	<b>Tellisford</b> , Matins <b>Norton St Philip</b> , Holy Communion/ Baptism <b>Laverton</b> , Matins <b>Rode</b> , Outdoor Nativity <b>Norton St Philip</b> , <b>Carol service</b>	J Robinson/C Walker P Simper J Robinson/C Walker C Walker/J Robinson
<b>Monday 13 December</b>	9.00 am	<b>Norton St Philip</b> , Morning Prayer	
<b>Tuesday 14 December</b>	5.00 pm	<b>Laverton</b> , Evening Prayer	Zoom
<b>Wednesday 15 December</b>	8.30 am 6.00 pm	<b>Hemington</b> , Morning Prayer <b>Rode Chapel</b> , Informal Prayer	Zoom
<b>Thursday 16 December</b>	6.00 pm	<b>Norton St Philip</b> , Silent Prayer	
<b>Saturday 18 December</b>	6.00 pm	<b>Farleigh Hungerford</b> St Leonards, Carols	C Walker
<b>Sunday 19 December</b>	9.00 am 9.00 am 10.30 am 11.00 am 3.00 pm	<b>Farleigh Hungerford</b> , Holy Communion <b>Mini Breakfast Church</b> <b>Norton St Philip</b> , Informal Worship <b>Laverton</b> , Carol Service <b>Rode</b> , Carols	C Walker Zoom with S Rodford M Walker/B Day J Robinson J Robinson/C Walker
<b>Monday 20 December</b>	9.00 am	<b>Norton St Philip</b> , Morning Prayer	
<b>Tuesday 21 December</b>	6.00 pm	<b>Tellisford</b> , Evening Prayer	
<b>Wednesday 22 December</b>	8.30 am 6.00 pm 6.00 pm	<b>Hemington</b> , Morning Prayer <b>Norton St Philip</b> , Carols on the Green <b>Rode Chapel</b> , Informal Prayer	Zoom
<b>Thursday 23 December</b>	5.00 pm 6.00 pm 7.30 pm	<b>Tellisford</b> , Christingle service <b>Norton St Philip</b> , Silent Prayer <b>Norton St Philip The Fleur</b> , Carol singing	
<b>Friday 24 December</b> <b>Christmas Eve</b>	3.00 pm 5.00 pm 11.00 pm 11.00 pm	<b>Rode Chapel</b> , Crib Service <b>Norton St Philip</b> , Crib Service <b>Norton St Philip</b> , Holy Communion <b>Rode St Lawrence</b> , Holy Communion	J Robinson/S Rodford C Walker/S Rodford C Walker/B Day J Robinson/M Harrison
<b>Saturday 25 December</b> <b>Christmas Day</b>	9.00 am 9.00 am 10.30 am 10.30 am	<b>Farleigh Hungerford</b> , Holy Communion (bcp) <b>Laverton</b> , Holy Communion <b>Rode St Lawrence</b> , Family Service <b>Norton St Philip</b> , Family Service	J Robinson/M Harrison C Walker/S Kivett J Robinson C Walker
<b>Thursday 30 December</b>	6.00 pm	<b>Norton St Philip</b> , Silent Prayer	



### DECEMBER 2021 DIARY

Mon 6 Dec	12.15pm Monday Lunch Club Christmas Lunch see page 31 for details
Tue 2 Dec	11am Rode Walking Group see page 32 for details
Tue 7 Dec	7.30pm Rode PC Monthly Meeting, Rode Chapel
11-23 Dec	Winter Window Wander see pages 18 & 35 for details
Sun 12 Dec	10.30am Rode Santa Dash see page 18 and 36 for details 3pm Outdoor Nativity see pages 5 & 36
Mon 13 Dec	2.30pm Forgot Me Not Café see page 36 for details 6.30pm Rode Carols see pages 19 & 37 for details
Wed 15 Dec	6pm Doorstep Carols see page 18 & 37 6pm "The Meaning Of Christmas" Yoga see page 37 for details
Sat 18 Dec	5.30pm Carol Service, Farleigh Hungerford Chapel Trust see page 37
Sun 19 Dec	11am Carol Service, St, Mary's see page 37 3pm Family Carol Service, St Lawrence, see page 5 & page 38
Mon 20 Dec	From 5.45pm Santa Float In Rode see page 19 for details
Thu 23 Dec	5pm "Christingle" see page 38
Fri 24 Dec	5pm Crib Service, Rode Chapel see pages 5, 24 & 38 11pm Midnight Mass, St Lawrence
Sat 25 Dec	Christmas Day 10.30am Family Service, St Lawrence
Sun 26 Dec	Boxing Day
Mon 27 Dec	SUBSTITUTE BANK HOLIDAY (Christmas Day)
Tue 28 Dec	SUBSTITUTE BANK HOLIDAY (Boxing Day)
Thu 30 Dec	10am "Plantathon" see pages 8 & 39 RPF Lottery Draw "The Cross Keys see page 11 for details

### JANUARY 2022 DIARY

Mon 10 Jan	11am Forgot Me Not Café see page 36 for details 7.30pm Rode & District Gardening Club see page 33 for details
Tue 11 Jan	10am Rode Walking Group see page 32 for details
Fri 21 Jan	<b>FEBRUARY LINK COPY DEADLINE</b>
Sat 29 Jan	"Bangers & Bingo" Scouts fundraiser see page 38 for details
Mon 31 Jan	RPF Lottery Draw The Cross Keys see page 11 for details

### FORWARD PLANNER

5 Feb	"Who killed the (tba!)...?" see page 20 & 37 for details
3/4/5 Mar	"Toad of Rode Returns" pantomime see page 20 for details

Dec 2021							Jan 2022						
Mon	Tue	Wed	Thu	Fri	Sat	Sun	Mon	Tue	Wed	Thu	Fri	Sat	Sun
		1	2	3	4	5						1	2
6	7	8	9	10	11	12	3	4	5	6	7	8	9
13	14	15	16	17	18	19	10	11	12	13	14	15	16
20	21	22	23	24	25	26	17	18	19	20	21	22	23
27	28	29	30	31			24	25	26	27	28	29	30
							31						

● REFUSE   
 ● RECYCLING   
 ● GARDEN

**Please send copy for the February 2022 issue of 'The Link'**  
 via email to [gillhleonard@aol.com](mailto:gillhleonard@aol.com) or deliver to 1 Lower Street, Rode BA11 6PU  
**latest Friday 21<sup>st</sup> January 2022.**

*The Link is published by Hardington Vale PCC, which reserves the right to edit any material submitted for publication. Opinions expressed are not necessarily those of the Clergy or PCC*