

Recycle More Messenger

**Anniversary Edition
4 November, 2021**

Welcome to an anniversary edition of the Recycle More Messenger. The new service has changed the way Mendip recycles for good and the latest figures show the district has taken the service to its heart. Thank you for your support.

Mendip makes recycling work

The impact of Covid on home-working and domestic waste has made it difficult to precisely isolate the impact of the new service.

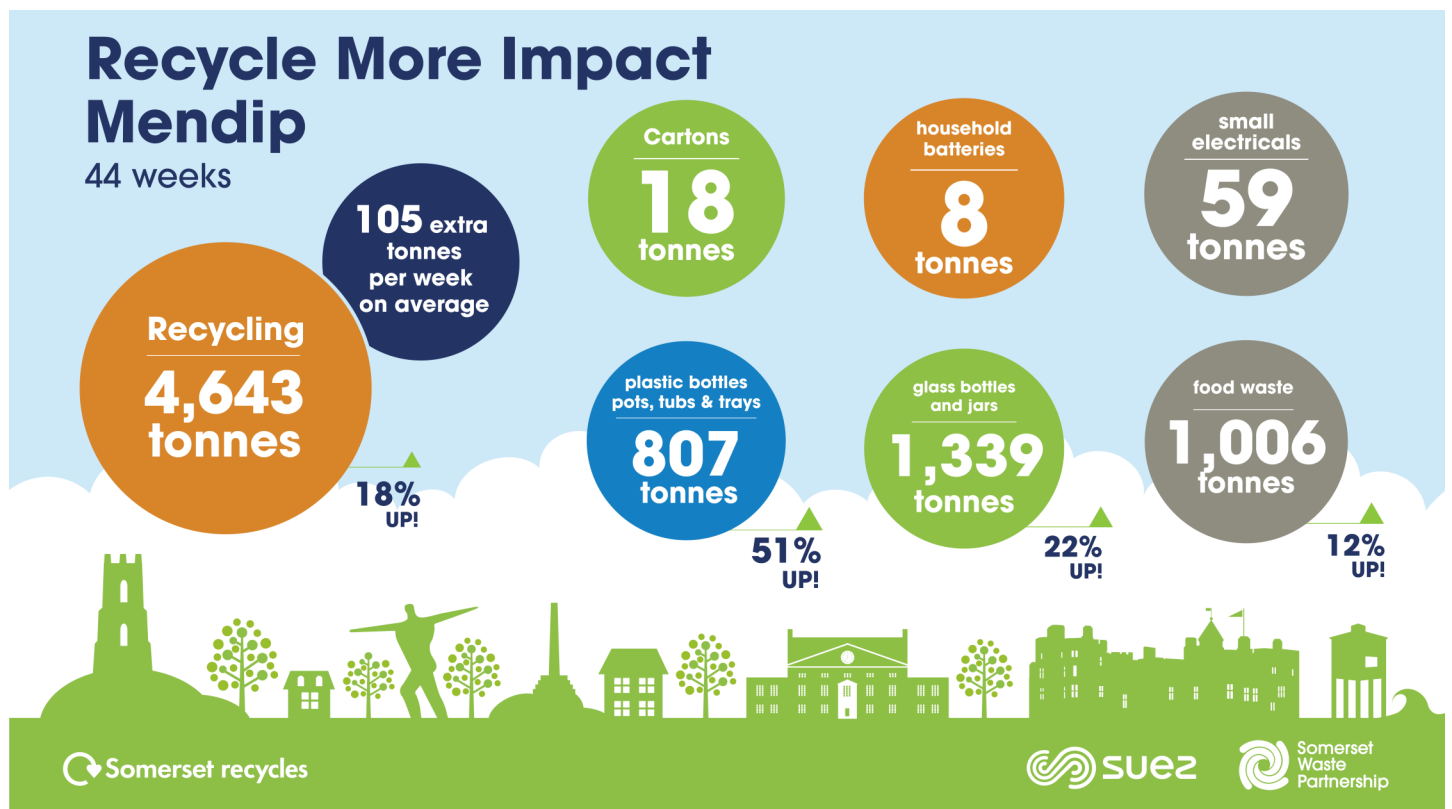
We estimate that in its first 44 weeks (ten calendar months) it saw around 4,600 extra tonnes of recycling collected. That's an average of more than 100 extra tonnes every week and includes a more than 50% increase in the amount of plastic collected.

And it is not just the new materials. We have seen big increases in most recyclables.

Please be reassured that what you recycle is going where it should.

In 2020-21, 97.8% of the material reused or recycled in Somerset stayed in the UK for reprocessing. More than 50% stayed in Somerset. A remarkable 99.4% of the plastic recycled stayed in the UK to be turned into new products and packaging.

This is possible because of the effort residents put in to sort at the kerbside. This means we have high quality, low contamination recycling to sell-on to reprocessors. For more details, visit somersetwaste.gov.uk/recycling-tracker



Checking your collection days

The collection day calendars provided when Recycle More was launched in Mendip will have now expired.

We hope that the past year has given enough time for everyone to get into the routine of three-weekly rubbish collections.

Don't forget, checking your collections is easy online. Use the My Collection Day feature on the SWP homepage to:

- Immediately check your dates.
- Download a printable version of your collection day calendar.



My Collection Day

Find out when your next waste and recycling collection is

Check now

Better still, use it to download your dates into your laptop or mobile device's calendar. You'll then get an automatic reminder so you need never miss a collection.

Plastics: what's in and what's not?

Recycle More means you can recycle plastic bottle, pots, tubs and trays every week from the kerbside. We cannot currently collect all plastics— some are still difficult to get reprocessed in the UK.

So, please no:

Thin stretchy and crinkly plastics, such as carrier bags, food wrappings or film from food trays and punnets.

Hard plastics, such as plastic toys, CD cases, car parts, coat hangers, blister packs, toothbrushes, pens.

Other plastics, such as toothpaste tubes and polystyrene/expanded polystyrene.

Mixed materials, such as pet food pouches and crisp packets.

Increasingly, some supermarkets are starting to take some of these materials so please check where you shop. Or you may be able to find a local volunteer collection using **TerraCycle.com**

For more detail please visit **somersetwaste.gov.uk/act-on-plastics**

